



BANK of JAPAN

P.O. BOX 30
TOKYO 103-8660, JAPAN
TEL. 03-3279-1111

Research and Statistics Department

FOR RELEASE 8:50 A.M.
Thursday, February 10, 2011

Monthly Report on the Corporate Goods Price Index (Preliminary Figures for January 2011)

monthly change, %
< >: change from 3 months earlier, %
(): yearly change, %

	Domestic Corporate Goods Price Index		Export Price Index		Import Price Index		Foreign exchange rate yen/\$
		excluding extra charges for summer electricity	Yen basis	Contract currency basis	Yen basis	Contract currency basis	
2008 CY	- < - > (4.5)	- < - >	- (-6.1)	- (2.0)	- (8.6)	- (19.8)	(-12.2)
2009	- < - > (-5.2)	- < - >	- (-10.5)	- (-3.3)	- (-25.4)	- (-19.0)	(-9.6)
2010	- < - > (-0.2)	- < - >	- (-2.5)	- (2.3)	- (7.1)	- (13.1)	(-6.2)
Index	102.8	102.8	86.4	100.5	106.2	127.1	87.81
2007 FY	- < - > (2.3)	- < - >	- (-0.2)	- (0.2)	- (8.0)	- (9.8)	(-2.3)
2008	- < - > (3.1)	- < - >	- (-7.4)	- (1.3)	- (0.4)	- (10.2)	(-12.0)
2009	- < - > (-5.2)	- < - >	- (-7.7)	- (-2.4)	- (-19.1)	- (-13.3)	(-7.6)
Index	102.6	102.5	88.7	98.6	101.5	115.7	92.85
2009/ Q3	0.1 < - > (-8.2)	-0.2 < - >	-1.4 (-14.6)	0.3 (-5.5)	3.0 (-33.3)	6.0 (-25.7)	-3.8
Q4	-0.8 < - > (-5.2)	-0.5 < - >	-2.2 (-3.8)	0.2 (-0.7)	0.2 (-10.7)	3.5 (-5.7)	-4.2
2010/ Q1	0.3 < - > (-1.7)	0.3 < - >	0.9 (0.6)	1.1 (1.7)	3.5 (9.2)	3.0 (12.1)	1.1
Q2	0.6 < - > (0.2)	0.6 < - >	0.9 (-1.9)	0.9 (2.6)	5.1 (12.2)	4.4 (18.1)	1.4
Q3	-0.2 < - > (-0.1)	-0.4 < - >	-4.8 (-5.3)	-0.5 (1.7)	-5.3 (3.3)	-0.1 (11.3)	-6.6
Q4	0.3 < - > (1.0)	0.5 < - > r	-0.1 (r -3.2)	r 2.0 (r 3.6)	0.6 (3.6)	3.5 (11.3)	-3.8
Index	103.1	103.1	r 84.4	r 102.0	105.1	131.8	82.64
2009/ Dec.	0.1 < -0.7 > (-3.8)	0.1 < -0.5 >	-0.1 (0.1)	-0.1 (0.4)	3.0 (4.9)	2.9 (6.9)	0.4
2010/ Jan.	0.1 < 0.2 > (-2.2)	0.1 < 0.2 >	1.6 (2.8)	0.6 (0.9)	1.6 (12.1)	0.3 (11.8)	1.8
Feb.	0.1 < 0.3 > (-1.6)	0.1 < 0.3 >	-0.9 (1.3)	0.3 (1.7)	-0.7 (9.7)	0.3 (12.1)	-0.9
Mar.	0.2 < 0.4 > (-1.3)	0.2 < 0.4 >	0.5 (-2.2)	0.5 (2.5)	0.0 (5.9)	-0.2 (12.5)	0.2
Apr.	0.4 < 0.7 > (-0.2)	0.4 < 0.7 >	3.0 (-0.7)	0.7 (2.9)	6.1 (12.3)	3.6 (17.8)	3.2
May	0.3 < 0.9 > (0.5)	0.3 < 0.9 >	-2.4 (-1.4)	-0.1 (2.9)	0.2 (15.3)	2.1 (20.9)	-1.8
June	-0.5 < 0.2 > (0.4)	-0.5 < 0.2 >	-1.2 (-3.6)	-0.5 (1.9)	-2.6 (9.1)	-1.9 (15.5)	-0.8
July	0.0 < -0.2 > (-0.1)	-0.2 < -0.4 >	-2.2 (-4.2)	-0.3 (2.0)	-2.3 (4.9)	0.2 (11.8)	-3.5
Aug.	0.0 < -0.5 > (0.0)	0.0 < -0.7 >	-1.4 (-6.7)	0.1 (1.3)	-2.0 (1.9)	0.0 (11.3)	-2.6
Sep.	0.0 < 0.0 > (-0.1)	0.0 < -0.2 >	-0.4 (-4.9)	0.4 (1.7)	-0.1 (3.0)	0.9 (10.6)	-1.2
Oct.	0.1 < 0.1 > (0.8)	0.3 < 0.3 >	-0.6 (-4.6)	0.9 (3.0)	-1.4 (2.4)	0.6 (11.3)	-3.0
Nov.	0.1 < 0.2 > (0.9)	0.1 < 0.4 >	1.2 (-3.1)	0.8 (3.3)	2.7 (4.3)	2.3 (11.7)	0.7
Dec.	0.4 < 0.6 > (1.2)	0.4 < 0.8 > r	1.1 (r -2.0)	r 0.7 (r 4.2)	r 3.0 (r 4.2)	r 2.4 (r 11.1)	1.1
2011/ Jan. Preliminary Figures	0.5 < 1.0 > (1.6)	0.5 < 1.0 >	0.1 (-3.4)	0.7 (4.2)	2.1 (4.7)	3.0 (14.0)	-0.9 (-9.4)
Index	103.9	103.9	85.4	103.4	110.4	138.9	82.66

Notes : 1. "Q1" = January to March, "Q2" = April to June, "Q3" = July to September, and "Q4" = October to December.

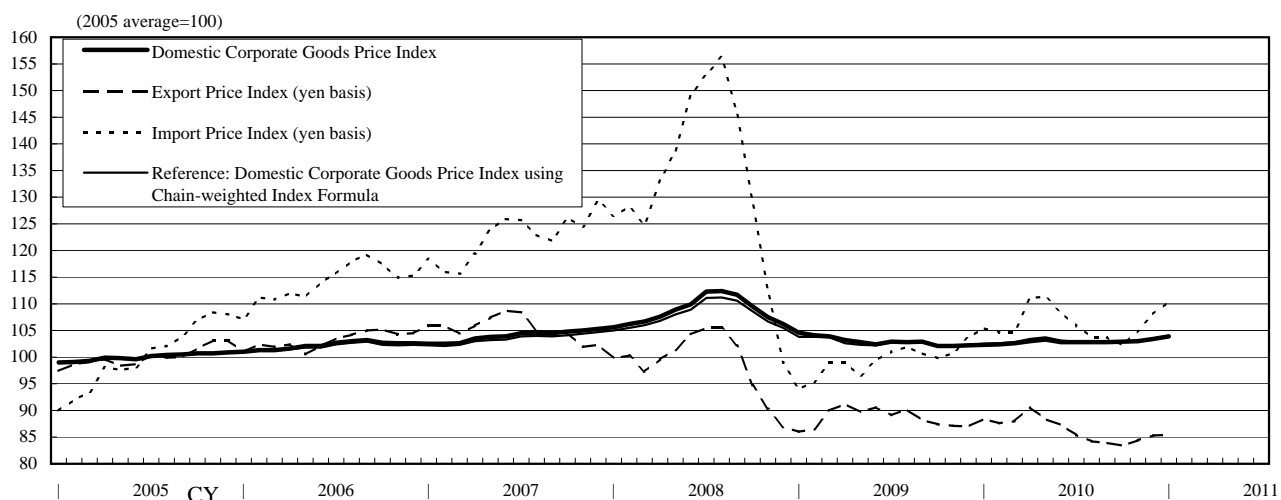
2. r: revised figures

3. A negative change in the "Foreign exchange rate" indicates an appreciation of the yen.

The next monthly report will be released on Thursday, March 10, 2011.

(Commodities contributing to the monthly changes in January 2011)

Domestic Corporate Goods Price Index		Monthly change 0.5%
Groups	Contribution to change	Commodities
Petroleum & coal products	0.38 %p	Fuel oil C, Naphtha, Gasoline, Kerosene, Fuel oil A
Chemicals & related products	0.09 %p	Ethylene, Propylene, Butane & butylene
Nonferrous metals	0.05 %p	Plastic insulated copper wires, Unwrought copper, Bare copper wires
Iron & steel	0.05 %p	Light steel bars, H sections, Heavy, medium & light steel shapes
Other manufacturing industry products	0.05 %p	Formula feeds, Soybean cake & meal
Scrap & waste	0.03 %p	Iron & steel scrap
Agriculture, forestry & fishery products	-0.08 %p	Chicken eggs, Pork, Beef
Electric power, gas & water	-0.03 %p	Extra high tension power, Commercial high tension power
Information & communications equipment	-0.02 %p	Cellular phones, Computer monitors
Export Price Index (Contract currency basis)		Monthly change 0.7%
Groups	Contribution to change	Commodities
Chemicals & related products	0.25 %p	Para-xylene, Styrene monomer, Terephthalic acid
Metals & related products	0.19 %p	Unwrought copper, Iron & steel scrap, Stainless steel sheets, Ordinary steel pipes & tubes
General machinery & equipment	0.15 %p	Aircraft engine parts, Internal combustion engines for motor vehicles & parts thereof
Other primary products & manufactured goods	0.11 %p	Flat glass, Gas oil, Motor vehicle tires
Transportation equipment	0.07 %p	Standard passenger cars, Motor vehicle parts, Motorcycles
Export Price Index (Yen basis)		Monthly change 0.1%
Import Price Index (Contract currency basis)		Monthly change 3.0 %
Groups	Contribution to change	Commodities
Petroleum, coal & natural gas	1.97 %p	Crude petroleum, Liquefied petroleum gas, Naphtha, Kerosene & jet fuel oil
Metals & related products	0.47 %p	Iron ores, Copper ores, Unwrought nickel, Unwrought aluminum
Foodstuffs & feedstuffs	0.29 %p	Corn, Soybeans, Prepared eel, Beef
Electric & electronic products	0.10 %p	Connecting components, Transducers, Electronic computers
Other primary products & manufactured goods	0.06 %p	Natural rubber, Plastic films & sheets
Textiles	0.03 %p	Sweaters, Men's or boys' trousers, etc.
Import Price Index (Yen basis)		Monthly change 2.1%



Domestic Corporate Goods Price Index
(Preliminary Figures for January 2011)

CY2005 average = 100

	Weight	Index (preliminary figures)	Previous month	Monthly change (preliminary figures)	Previous month	Yearly change (preliminary figures)	Previous month	Quarterly change (preliminary figures)
All commodities	1,000.0	103.9	103.4	% 0.5	% 0.4	% 1.6	% 1.2	% 1.0
excluding extra charges for summer electricity	1,000.0	103.9	103.4	0.5	0.4	1.6	1.2	1.0
Manufacturing industry products	918.8	103.8	103.2	0.6	0.3	1.3	1.0	1.0
Processed foodstuffs	114.5	109.5	r 109.4	0.1	r -0.2	3.3	r 3.0	-0.2
Textile products	13.1	108.8	r 109.2	-0.4	r 0.1	3.8	r 3.2	0.2
Lumber & wood products	10.2	107.3	106.9	0.4	-0.1	3.7	3.2	0.5
Pulp, paper & related products	28.5	110.1	r 110.0	0.1	r -0.2	-1.1	r -1.4	-0.2
Chemicals & related products	85.2	102.3	101.3	1.0	0.1	-1.1	-1.0	1.2
Plastic products	38.7	105.3	105.6	-0.3	-0.2	-1.0	-0.8	-0.6
Petroleum & coal products	53.8	127.5	r 120.2	6.1	r 3.4	11.3	r 8.4	10.6
Ceramic, stone & clay products	25.9	111.4	r 111.4	0.0	r 0.2	0.6	r 0.5	0.2
Iron & steel	52.6	123.3	122.4	0.7	0.4	11.6	10.2	0.9
Nonferrous metals	22.5	134.4	132.2	1.7	3.0	7.6	10.9	6.4
Metal products	37.6	105.7	r 105.8	-0.1	r -0.4	-0.3	r -0.2	-0.6
General machinery & equipment	108.4	99.5	r 99.5	0.0	r -0.3	-0.4	r -0.5	-0.1
Electrical machinery & equipment	53.3	89.3	r 89.5	-0.2	r 0.3	-3.4	r -3.5	-0.1
Information & communications equipment	41.4	67.0	r 67.5	-0.7	r -0.4	-5.0	r -6.3	-1.2
Electronic components & devices	34.3	77.5	r 77.9	-0.5	r -0.3	-4.1	r -3.8	-1.4
Transportation equipment	124.8	102.2	r 102.2	0.0	r 0.2	-1.0	r -1.2	0.1
Precision instruments	10.6	98.2	r 98.3	-0.1	r 0.0	-0.7	r -0.8	0.1
Other manufacturing industry products	63.4	100.9	100.2	0.7	-0.1	-1.0	-2.1	0.6
Agriculture, forestry & fishery products	25.9	94.0	97.2	-3.3	2.6	-0.9	-1.7	0.5
Minerals	3.9	116.9	117.0	-0.1	0.1	2.6	4.1	0.0
Electric power, gas & water	46.5	103.7	104.3	-0.6	-0.7	2.5	3.7	-2.1
Scrap & waste	4.9	154.9	r 148.7	4.2	r 9.7	26.7	r 33.0	17.5
<Reference>								
Electric & electronic products	129.0	79.0	79.3	-0.4	-0.1	-4.0	-4.3	-0.8

Notes: 1. r: revised figures

2. Quarterly changes are changes from 3 months earlier.

3. "Electrical & electronic products" is compiled by combining "Electrical machinery & equipment," "Information & communications equipment," and "Electronic components & devices."

Export Price Index
(Preliminary Figures for January 2011)

CY2005 average = 100

	Weight	Index (preliminary figures)		Monthly change (preliminary figures)			Yearly change (preliminary figures)			Quarterly change (preliminary figures)	
			Previous month	Yen basis	Previous month	Contract currency basis	Yen basis	Previous month	Contract currency basis	Yen basis	Contract currency basis
All commodities	1,000.0	85.4	r 85.3	% 0.1	% 1.1	% 0.7	% -3.4	% -2.0	% 4.2	% 2.4	% 2.2
Textiles	14.7	96.5	r 95.6	0.9	r 4.3	1.9	0.3	r 1.6	9.9	5.5	5.1
Chemicals & related products	87.2	98.4	96.9	1.5	2.5	2.4	3.3	5.2	12.3	7.7	7.5
Metals & related products	88.5	113.9	r 113.0	0.8	r 3.0	1.5	5.8	r 9.9	15.2	5.7	4.7
General machinery & equipment	195.4	92.0	r 91.7	0.3	r 0.0	0.7	-4.8	r -4.1	1.6	0.7	0.9
Electric & electronic products	294.4	64.3	r 65.0	-1.1	r 0.8	-0.5	-8.7	r -7.5	-2.4	-0.2	-0.3
Transportation equipment	223.7	87.6	87.7	-0.1	0.3	0.3	-3.9	-2.1	4.2	2.3	1.9
Precision instruments	18.5	83.1	r 83.4	-0.4	r 0.1	0.0	-6.2	r -5.2	-0.1	-0.1	0.0
Other primary products & manufactured goods	77.6	93.4	r 92.9	0.5	r 1.3	1.2	-3.9	r -3.0	4.0	2.5	2.3

Notes : 1. r: revised figures

2. Quarterly changes are changes from 3 months earlier.

Import Price Index
(Preliminary Figures for January 2011)

CY2005 average = 100

	Weight	Index (preliminary figures)		Monthly change (preliminary figures)			Yearly change (preliminary figures)			Quarterly change (preliminary figures)	
			Previous month	Yen basis	Previous month	Contract currency basis	Yen basis	Previous month	Contract currency basis	Yen basis	Contract currency basis
All commodities	1,000.0	110.4	r 108.1	% 2.1	% 3.0	% 3.0	% 4.7	% 4.2	% 14.0	% 8.0	% 7.8
Foodstuffs & feedstuffs	82.3	116.5	113.7	2.5	2.8	3.3	6.9	6.4	17.7	8.7	8.6
Textiles	60.5	106.0	r 106.1	-0.1	r 1.2	0.5	5.6	r 6.7	12.8	3.8	3.9
Metals & related products	94.8	154.0	r 150.2	2.5	r 3.0	3.4	24.8	r 28.4	37.1	7.8	7.1
Wood, lumber & related products	23.2	104.1	104.0	0.1	1.7	0.8	1.7	4.3	12.3	2.0	1.9
Petroleum, coal & natural gas	275.5	137.8	r 131.7	4.6	r 5.3	5.6	9.4	r 5.0	19.8	16.2	15.4
Chemicals & related products	69.0	102.6	r 102.9	-0.3	r 3.3	0.2	-2.0	r 0.5	4.6	4.8	5.0
General machinery & equipment	51.8	97.9	r 97.9	0.0	r 0.4	0.3	-6.2	r -5.0	0.7	0.9	0.5
Electric & electronic products	205.4	68.8	r 68.6	0.3	r 0.3	0.7	-8.3	r -7.3	-2.9	1.0	0.6
Transportation equipment	38.6	92.0	92.6	-0.6	1.8	-0.4	-2.3	-1.5	4.4	1.0	1.2
Precision instruments	21.9	88.8	r 89.0	-0.2	r 0.3	0.1	-5.6	r -4.1	0.2	0.1	-0.3
Other primary products & manufactured goods	77.0	98.8	r 98.7	0.1	r 1.6	0.9	-3.2	r -0.7	5.5	3.3	3.1

Notes : 1. r: revised figures

2. Quarterly changes are changes from 3 months earlier.

Reference: Index by Stage of Demand and Use
(Preliminary Figures for January 2011)

CY2005 average = 100

	Weight	Index		Monthly change		Yearly change		Quarterly change (preliminary figures)
		(preliminary figures)	Previous month	(preliminary figures)	Previous month	(preliminary figures)	Previous month	
Domestic demand products	1,000.000	105.1	104.2	% 0.9	% 0.8	% 2.1	% 1.7	% 2.2
Domestic goods	813.030	103.9	103.4	0.5	0.4	1.6	1.2	1.0
Imports	186.970	110.4	r 108.1	2.1	r 3.0	4.7	r 4.2	8.0
Raw materials	78.589	135.9	r 131.8	3.1	r 4.2	12.4	r 10.0	11.2
Domestic goods	21.900	110.7	r 110.1	0.5	r 2.6	4.6	r 5.2	4.0
Imports	56.689	145.6	r 140.2	3.9	r 4.7	14.9	r 11.6	13.5
Intermediate materials	517.130	107.7	r 106.8	0.8	r 0.7	2.0	r 1.9	1.8
Domestic goods	448.624	108.5	r 107.6	0.8	r 0.5	2.3	r 2.0	1.3
Imports	68.506	102.8	r 101.6	1.2	r 2.3	0.3	r 2.0	5.8
Final goods	404.281	95.7	r 95.6	0.1	r 0.2	-0.3	r -0.5	0.5
Domestic goods	342.506	97.4	r 97.4	0.0	r 0.0	0.2	r -0.2	0.1
Imports	61.775	86.4	r 85.9	0.6	r 1.3	-3.0	r -2.5	3.1
Capital goods	131.235	94.0	r 94.0	0.0	r -0.2	-1.5	r -1.5	0.0
Domestic goods	115.697	97.3	r 97.2	0.1	r -0.3	-0.7	r -1.0	0.0
Imports	15.538	69.9	r 70.0	-0.1	r 0.4	-7.8	r -6.7	0.6
Consumer goods	273.046	96.5	96.4	0.1	0.4	0.2	-0.1	0.7
Domestic goods	226.809	97.4	97.5	-0.1	0.2	0.5	0.2	0.1
Imports	46.237	91.9	r 91.2	0.8	r 1.4	-1.8	r -1.4	3.7
Durable consumer goods	82.800	82.9	r 83.2	-0.4	r 0.1	-3.7	r -3.9	-0.5
Domestic goods	68.853	84.2	r 84.4	-0.2	r -0.2	-3.3	r -3.8	-0.7
Imports	13.947	76.8	r 77.1	-0.4	r 1.7	-5.4	r -5.2	1.6
Non-durable consumer goods	190.246	102.4	r 102.2	0.2	r 0.6	1.7	r 1.4	1.1
Domestic goods	157.956	103.2	r 103.2	0.0	r 0.4	2.1	r 1.7	0.5
Imports	32.290	98.5	r 97.3	1.2	r 1.5	-0.4	r 0.0	4.6

Notes:

1. r: revised figures
2. Quarterly changes are changes from 3 months earlier.
3. These indexes are classified by stage of demand and use. Commodities of "Domestic Corporate Goods Price Index" and "Import Price Index" are classed as "Domestic demand products." Commodities used and consumed for production are defined as "Raw materials" (unprocessed materials) and "Intermediate materials" (processed materials), and those for final demand users as "Final goods." Indexes classified by stage of use are the subdivisions of those classified by stage of demand. Commodities of "Export Price Index" are classed as "Exports." Indexes for "Exports" are classified only by stage of use, but they are not included here.

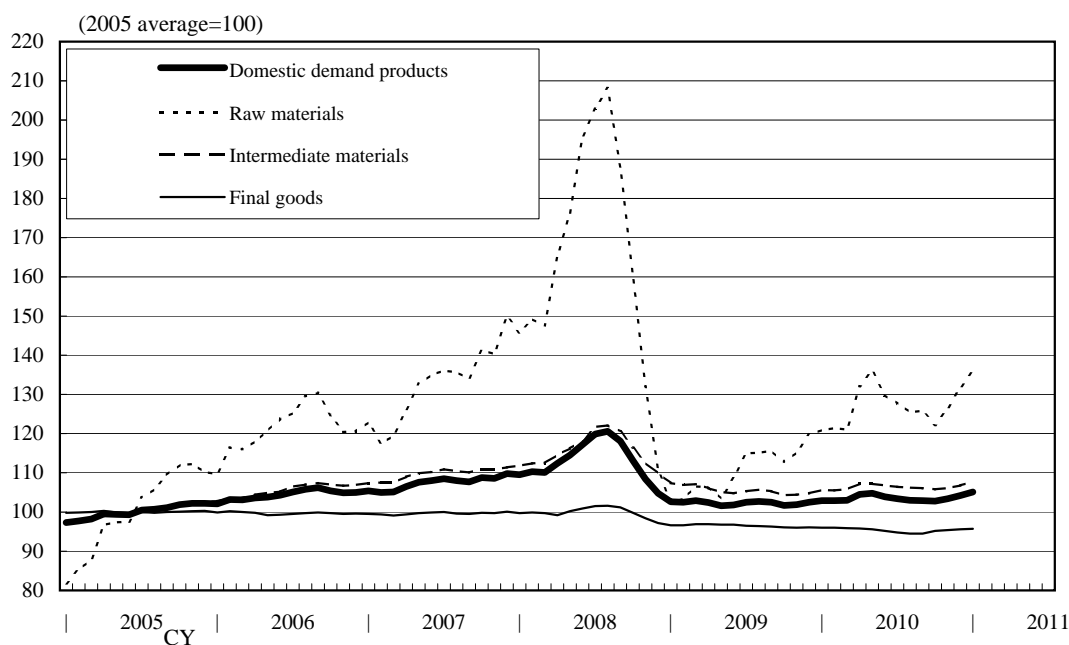
(Commodities contributing to the monthly changes in January 2011)

Domestic demand products (yen basis) Monthly change 0.9 %		
Classification by stage of demand	Monthly change	Commodities contributing to the change
Raw materials <Weight: 78.589>	3.1 %	up: Crude petroleum (I), Iron ores (I), Iron & steel scrap, Copper ores (I), Liquefied natural gas (I), Corn (I) down: Chicken eggs, Pork
Intermediate materials <Weight: 517.130>	0.8 %	up: Fuel oil C, Naphtha, Fuel oil A, Formula feeds down: Extra high tension power, MOS logic integrated circuits
Final goods <Weight: 404.281>	0.1 %	
Capital goods <Weight: 131.235>	0.0 %	up: Radar apparatus & radio remote control apparatus, Power cables down: Computer monitors
Durable consumer goods <Weight: 82.800>	-0.4 %	up: Gas water heaters, Room air conditioners (I) down: Cellular phones
Nondurable consumer goods <Weight: 190.246>	0.2 %	up: Gasoline, Kerosene, Liquefied petroleum gas (I) down: Chicken eggs, Beef, Pork

Note: (I) denotes commodities of "Import Price Index."

Commodities without (I) are those of "Domestic Corporate Goods Price Index."

(Developments in Index by Domestic demand products)



Reference: Domestic Corporate Goods Price Index
using Chain-weighted Index Formula
(Preliminary Figures for January 2011)

CY2005 average = 100

	Weight	Index (preliminary figures)	Previous month	Monthly change (preliminary figures)	Previous month	Yearly change (preliminary figures)	Previous month	Quarterly change (preliminary figures)
All commodities	1,000.0	104.0	103.4	% 0.6	% 0.4	% 1.5	% 1.1	% 1.1
excluding extra charges for summer electricity	1,000.0	104.0	r 103.4	0.6	r 0.4	1.4	r 1.1	1.1
Manufacturing industry products	914.2	103.4	102.7	0.7	0.3	1.1	0.6	1.1
Processed foodstuffs	107.5	108.9	r 108.8	0.1	r -0.2	3.2	r 2.9	-0.1
Textile products	11.1	108.2	108.7	-0.5	0.0	3.5	2.9	0.1
Lumber & wood products	8.7	107.8	107.5	0.3	-0.1	4.0	3.6	0.4
Pulp, paper & related products	27.4	109.4	r 109.3	0.1	r -0.3	-1.3	r -1.6	-0.3
Chemicals & related products	84.5	104.5	r 103.4	1.1	r 0.1	-1.0	r -0.9	1.4
Plastic products	36.3	104.3	r 104.5	-0.2	r -0.3	-1.2	r -1.1	-0.6
Petroleum & coal products	70.0	130.1	r 122.8	5.9	r 3.4	10.9	r 8.0	10.3
Ceramic, stone & clay products	24.1	109.0	r 108.9	0.1	r 0.0	0.0	r -0.3	0.1
Iron & steel	65.1	122.9	121.8	0.9	0.5	11.7	10.2	1.1
Nonferrous metals	27.6	140.9	138.3	1.9	2.6	6.9	9.8	5.9
Metal products	35.0	105.3	r 105.4	-0.1	r -0.3	-0.4	r -0.3	-0.5
General machinery & equipment	106.6	98.8	r 98.8	0.0	r -0.3	-0.5	r -0.6	-0.2
Electrical machinery & equipment	49.1	87.6	r 87.8	-0.2	r 0.2	-4.1	r -4.1	-0.3
Information & communications equipment	37.8	60.3	r 60.7	-0.7	r -0.8	-8.4	r -9.8	-1.5
Electronic components & devices	31.0	74.2	r 74.6	-0.5	r -0.3	-5.6	r -5.3	-1.7
Transportation equipment	124.9	101.6	101.6	0.0	0.2	-1.3	-1.5	0.1
Precision instruments	10.8	96.9	r 97.0	-0.1	r 0.0	-0.7	r -0.9	0.2
Other manufacturing industry products	56.7	99.7	98.8	0.9	-0.1	-1.1	-2.4	0.8
Agriculture, forestry & fishery products	23.5	94.4	r 97.4	-3.1	r 3.0	-0.4	r -1.5	1.4
Minerals	3.1	115.6	r 115.6	0.0	r 0.1	2.2	r 3.9	0.0
Electric power, gas & water	49.6	104.1	104.8	-0.7	-0.8	2.9	4.3	-2.3
Scrap & waste	9.6	167.2	r 160.4	4.2	r 10.4	28.2	r 34.6	18.7
<Reference>								
Electric & electronic products	117.9	74.5	r 74.8	-0.4	r -0.3	-5.8	r -6.3	-1.1

Notes: 1. r: revised figures

2. Quarterly changes are changes from 3 months earlier.

3. "Domestic Corporate Goods Price Index using Chain-weighted index Formula" is classified in the same way as that of "Domestic Corporate Goods Price Index." Weights are updated annually and indexes are chained with the indexes of the previous year. The indexes are based on the year 2008 weights.

4. "Electrical & electronic products" is compiled by combining "Electrical machinery & equipment," "Information & communications equipment," and "Electronic components & devices."