



BANK of JAPAN

P.O. BOX 30
TOKYO 103-8660, JAPAN
TEL. 03-3279-1111

Research and Statistics Department

FOR RELEASE 8:50 A.M.

Thursday, March 10, 2011

Monthly Report on the Corporate Goods Price Index (Preliminary Figures for February 2011)

monthly change, %
< >: change from 3 months earlier, %
(): yearly change, %

	Domestic Corporate Goods Price Index		Export Price Index		Import Price Index		Foreign exchange rate yen/\$
		excluding extra charges for summer electricity	Yen basis	Contract currency basis	Yen basis	Contract currency basis	
2008 CY	- < - > (4.5)	- < - >	- (-6.1)	- (2.0)	- (8.6)	- (19.8)	(-12.2)
2009	- < - > (-5.2)	- < - >	- (-10.5)	- (-3.3)	- (-25.4)	- (-19.0)	(-9.6)
2010	- < - > (-0.2)	- < - >	- (-2.5)	- (2.3)	- (7.1)	- (13.1)	(-6.2)
Index	102.8	102.8	86.4	100.5	106.2	127.1	87.81
2007 FY	- < - > (2.3)	- < - >	- (-0.2)	- (0.2)	- (8.0)	- (9.8)	(-2.3)
2008	- < - > (3.1)	- < - >	- (-7.4)	- (1.3)	- (0.4)	- (10.2)	(-12.0)
2009	- < - > (-5.2)	- < - >	- (-7.7)	- (-2.4)	- (-19.1)	- (-13.3)	(-7.6)
Index	102.6	102.5	88.7	98.6	101.5	115.7	92.85
2009/ Q3	0.1 < - > (-8.2)	-0.2 < - >	-1.4 (-14.6)	0.3 (-5.5)	3.0 (-33.3)	6.0 (-25.7)	-3.8
Q4	-0.8 < - > (-5.2)	-0.5 < - >	-2.2 (-3.8)	0.2 (-0.7)	0.2 (-10.7)	3.5 (-5.7)	-4.2
2010/ Q1	0.3 < - > (-1.7)	0.3 < - >	0.9 (0.6)	1.1 (1.7)	3.5 (9.2)	3.0 (12.1)	1.1
Q2	0.6 < - > (0.2)	0.6 < - >	0.9 (-1.9)	0.9 (2.6)	5.1 (12.2)	4.4 (18.1)	1.4
Q3	-0.2 < - > (-0.1)	-0.4 < - >	-4.8 (-5.3)	-0.5 (1.7)	-5.3 (3.3)	-0.1 (11.3)	-6.6
Q4	0.3 < - > (1.0)	0.5 < - >	-0.1 (-3.2)	2.0 (3.6)	0.6 (3.6)	3.5 (11.3)	-3.8
Index	103.1	103.1	84.4	102.0	105.1	131.8	82.64
2010/ Jan.	0.1 < 0.2 > (-2.2)	0.1 < 0.2 >	1.6 (2.8)	0.6 (0.9)	1.6 (12.1)	0.3 (11.8)	1.8
Feb.	0.1 < 0.3 > (-1.6)	0.1 < 0.3 >	-0.9 (1.3)	0.3 (1.7)	-0.7 (9.7)	0.3 (12.1)	-0.9
Mar.	0.2 < 0.4 > (-1.3)	0.2 < 0.4 >	0.5 (-2.2)	0.5 (2.5)	0.0 (5.9)	-0.2 (12.5)	0.2
Apr.	0.4 < 0.7 > (-0.2)	0.4 < 0.7 >	3.0 (-0.7)	0.7 (2.9)	6.1 (12.3)	3.6 (17.8)	3.2
May	0.3 < 0.9 > (0.5)	0.3 < 0.9 >	-2.4 (-1.4)	-0.1 (2.9)	0.2 (15.3)	2.1 (20.9)	-1.8
June	-0.5 < 0.2 > (0.4)	-0.5 < 0.2 >	-1.2 (-3.6)	-0.5 (1.9)	-2.6 (9.1)	-1.9 (15.5)	-0.8
July	0.0 < -0.2 > (-0.1)	-0.2 < -0.4 >	-2.2 (-4.2)	-0.3 (2.0)	-2.3 (4.9)	0.2 (11.8)	-3.5
Aug.	0.0 < -0.5 > (0.0)	0.0 < -0.7 >	-1.4 (-6.7)	0.1 (1.3)	-2.0 (1.9)	0.0 (11.3)	-2.6
Sep.	0.0 < 0.0 > (-0.1)	0.0 < -0.2 >	-0.4 (-4.9)	0.4 (1.7)	-0.1 (3.0)	0.9 (10.6)	-1.2
Oct.	0.1 < 0.1 > (0.8)	0.3 < 0.3 >	-0.6 (-4.6)	0.9 (3.0)	-1.4 (2.4)	0.6 (11.3)	-3.0
Nov.	0.1 < 0.2 > (0.9)	0.1 < 0.4 >	1.2 (-3.1)	0.8 (3.3)	2.7 (4.3)	2.3 (11.7)	0.7
Dec.	0.4 < 0.6 > (1.2)	0.4 < 0.8 >	1.1 (-2.0)	0.7 (4.2)	3.0 (4.2)	2.4 (11.1)	1.1
2011/ Jan.	0.5 < 1.0 > (1.6)	0.5 < 1.0 >	0.1 (-3.4)	0.7 (4.2)	r 2.6 (r 5.2)	r 3.3 (r 14.4)	-0.9
Feb. Preliminary Figures	0.2 < 1.1 > (1.7)	0.2 < 1.1 >	0.9 (-1.6)	0.9 (4.8)	1.6 (7.6)	1.8 (16.1)	-0.1 (-8.7)
Index	104.1	104.1	86.2	104.3	112.7	141.9	82.54

Notes : 1. "Q1" = January to March, "Q2" = April to June, "Q3" = July to September, and "Q4" = October to December.

2. r: revised figures

3. A negative change in the "Foreign exchange rate" indicates an appreciation of the yen.

The next monthly report will be released on Wednesday, April 13, 2011.

(Commodities contributing to the monthly changes in February 2011)

Domestic Corporate Goods Price Index		Monthly change 0.2%
Groups	Contribution to change	Commodities
Agriculture, forestry & fishery products	0.06 %p	Pork, Chicken eggs
Nonferrous metals	0.05 %p	Unwrought copper, Unwrought silver, Bare copper wires
Petroleum & coal products	0.05 %p	Fuel oil A, Kerosene, Gas oil, Jet fuel oil
Chemicals & related products	0.04 %p	Para-xylene, Benzene, Xylene
Scrap & waste	0.03 %p	Iron & steel scrap
Iron & steel	0.02 %p	Light steel bars, Stainless steel sheets
Transportation equipment	0.01 %p	Drive, transmission & steering parts
Information & communications equipment	-0.03 %p	Cellular phones
Electric power, gas & water	-0.02 %p	Gas for liberalized sectors, Extra high tension power

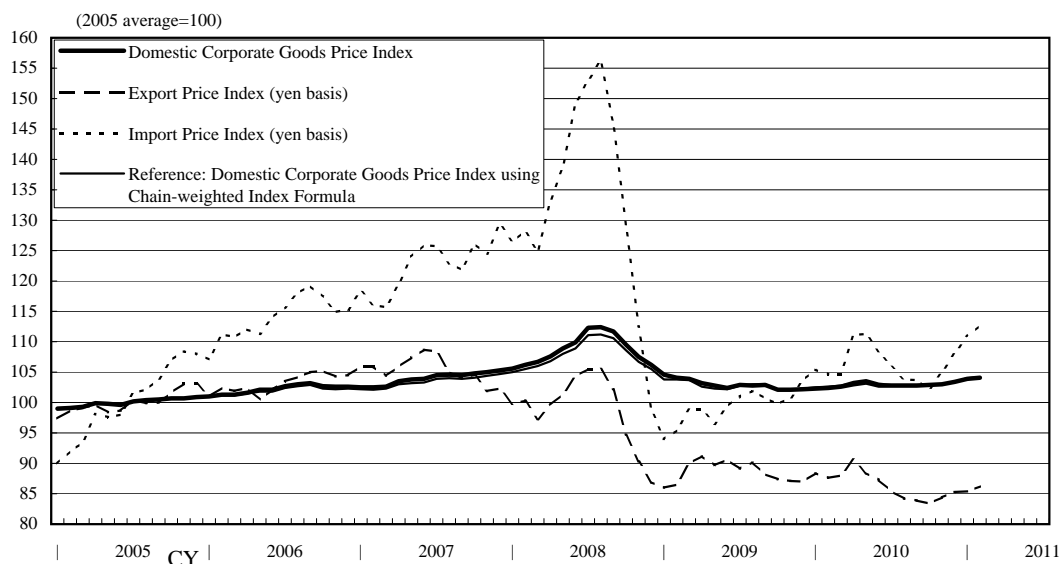
Export Price Index (Contract currency basis)		Monthly change 0.9%
Groups	Contribution to change	Commodities
Chemicals & related products	0.41 %p	Para-xylene, Caprolactam, Ethylene & propylene
Metals & related products	0.20 %p	Unwrought copper, Hot rolled steel strips, Stainless steel sheets, Cold rolled steel strips, Unwrought gold
Electric & electronic products	0.14 %p	Integrated circuits
Transportation equipment	0.09 %p	Standard passenger cars, Small passenger cars
Other primary products & manufactured goods	0.06 %p	Fuel oil C, Gas oil

Export Price Index (Yen basis)		Monthly change 0.9%
--------------------------------	--	---------------------

Import Price Index (Contract currency basis)		Monthly change 1.8 %
Groups	Contribution to change	Commodities
Petroleum, coal & natural gas	1.20 %p	Crude petroleum, Liquefied natural gas, Coal for coke making, Naphtha
Metals & related products	0.27 %p	Unwrought nickel, Copper ores, Unwrought tin, Unwrought aluminum
Foodstuffs & feedstuffs	0.13 %p	Corn, Coffee beans, Wheat, Prepared eel
Other primary products & manufactured goods	0.07 %p	Natural rubber
Wood, lumber & related products	0.04 %p	Plywood
Textiles	0.02 %p	Raw cotton, Spun polyester yarn fabrics

Import Price Index (Yen basis)		Monthly change 1.6%
--------------------------------	--	---------------------

(Developments in All commodities Index)



Domestic Corporate Goods Price Index
(Preliminary Figures for February 2011)

CY2005 average = 100

	Weight	Index (preliminary figures)	Previous month	Monthly change (preliminary figures)	Previous month	Yearly change (preliminary figures)	Previous month	Quarterly change (preliminary figures)
All commodities	1,000.0	104.1	103.9	% 0.2	% 0.5	% 1.7	% 1.6	% 1.1
excluding extra charges for summer electricity	1,000.0	104.1	103.9	0.2	0.5	1.7	1.6	1.1
Manufacturing industry products	918.8	104.0	r 103.9	0.1	r 0.7	1.6	r 1.4	1.1
Processed foodstuffs	114.5	109.6	r 109.6	0.0	r 0.2	3.2	r 3.4	0.0
Textile products	13.1	109.3	r 108.9	0.4	r -0.3	4.0	r 3.9	0.2
Lumber & wood products	10.2	107.8	107.3	0.5	0.4	3.8	3.7	0.7
Pulp, paper & related products	28.5	109.8	r 109.9	-0.1	r -0.1	-1.5	r -1.3	-0.4
Chemicals & related products	85.2	103.0	r 102.5	0.5	r 1.2	-0.5	r -0.9	1.8
Plastic products	38.7	105.4	r 105.4	0.0	r -0.2	-0.9	r -0.9	-0.4
Petroleum & coal products	53.8	128.5	127.5	0.8	6.1	11.5	11.3	10.6
Ceramic, stone & clay products	25.9	111.2	111.4	-0.2	0.0	0.5	0.6	0.0
Iron & steel	52.6	123.8	123.3	0.4	0.7	11.8	11.6	1.6
Nonferrous metals	22.5	137.0	r 134.7	1.7	r 1.9	12.2	r 7.8	6.8
Metal products	37.6	105.4	105.7	-0.3	-0.1	0.1	-0.3	-0.8
General machinery & equipment	108.4	99.7	r 99.7	0.0	r 0.2	-0.2	r -0.2	-0.1
Electrical machinery & equipment	53.3	89.1	r 89.1	0.0	r -0.4	-3.0	r -3.6	-0.1
Information & communications equipment	41.4	66.2	r 66.8	-0.9	r -1.0	-5.7	r -5.2	-2.4
Electronic components & devices	34.3	77.0	r 77.3	-0.4	r -0.8	-4.6	r -4.3	-1.4
Transportation equipment	124.8	102.3	102.2	0.1	0.0	-0.9	-1.0	0.3
Precision instruments	10.6	98.4	r 98.5	-0.1	r 0.2	-0.5	r -0.4	0.1
Other manufacturing industry products	63.4	101.0	r 101.0	0.0	r 0.8	-1.3	r -0.9	0.7
Agriculture, forestry & fishery products	25.9	96.6	94.0	2.8	-3.3	0.0	-0.9	2.0
Minerals	3.9	116.8	r 116.8	0.0	r -0.2	2.5	r 2.5	-0.1
Electric power, gas & water	46.5	103.2	103.7	-0.5	-0.6	1.1	2.5	-1.7
Scrap & waste	4.9	164.5	r 158.9	3.5	r 6.9	23.3	r 29.9	21.3
<Reference>								
Electric & electronic products	129.0	78.5	r 78.8	-0.4	r -0.6	-4.3	r -4.3	-1.1

Notes: 1. r: revised figures

2. Quarterly changes are changes from 3 months earlier.

3. "Electrical & electronic products" is compiled by combining "Electrical machinery & equipment," "Information & communications equipment," and "Electronic components & devices."

Export Price Index
(Preliminary Figures for February 2011)

CY2005 average = 100

	Weight	Index (preliminary figures)		Monthly change (preliminary figures)			Yearly change (preliminary figures)			Quarterly change (preliminary figures)	
			Previous month	Yen basis	Previous month	Contract currency basis	Yen basis	Previous month	Contract currency basis	Yen basis	Contract currency basis
All commodities	1,000.0	86.2	85.4	% 0.9	% 0.1	% 0.9	% -1.6	% -3.4	% 4.8	% 2.1	% 2.3
Textiles	14.7	96.9	r 96.3	0.6	r 0.7	0.6	1.5	r 0.1	10.1	5.7	6.0
Chemicals & related products	87.2	102.3	r 98.7	3.6	r 1.9	4.0	6.5	r 3.6	15.0	8.3	8.6
Metals & related products	88.5	115.9	r 114.2	1.5	r 1.1	1.6	8.2	r 6.0	17.0	5.7	5.5
General machinery & equipment	195.4	92.2	92.0	0.2	0.3	0.0	-3.3	-4.8	1.9	0.5	0.8
Electric & electronic products	294.4	64.7	r 64.1	0.9	r -1.4	0.7	-7.6	r -8.9	-2.6	0.3	0.1
Transportation equipment	223.7	88.2	87.6	0.7	-0.1	0.4	-1.7	-3.9	4.5	0.9	0.8
Precision instruments	18.5	83.3	83.1	0.2	-0.4	0.0	-5.0	-6.2	-0.1	0.0	0.0
Other primary products & manufactured goods	77.6	94.2	r 93.6	0.6	r 0.8	0.7	-1.9	r -3.7	5.1	2.7	3.1

Notes : 1. r: revised figures

2. Quarterly changes are changes from 3 months earlier.

Import Price Index
(Preliminary Figures for February 2011)

CY2005 average = 100

	Weight	Index (preliminary figures)		Monthly change (preliminary figures)			Yearly change (preliminary figures)			Quarterly change (preliminary figures)	
			Previous month	Yen basis	Previous month	Contract currency basis	Yen basis	Previous month	Contract currency basis	Yen basis	Contract currency basis
All commodities	1,000.0	112.7	r 110.9	% 1.6	% 2.6	% 1.8	% 7.6	% 5.2	% 16.1	% 7.3	% 7.7
Foodstuffs & feedstuffs	82.3	119.9	r 118.0	1.6	r 3.8	1.5	11.2	r 8.3	20.2	8.4	8.1
Textiles	60.5	106.7	r 106.3	0.4	r 0.2	0.4	6.7	r 5.9	13.4	1.8	2.0
Metals & related products	94.8	157.5	r 154.6	1.9	r 2.9	2.0	30.8	r 25.3	42.7	8.0	8.1
Wood, lumber & related products	23.2	106.4	104.1	2.2	0.1	1.9	4.9	1.7	13.5	4.0	4.0
Petroleum, coal & natural gas	275.5	143.2	r 138.8	3.2	r 5.4	3.3	13.0	r 10.2	23.0	14.5	14.6
Chemicals & related products	69.0	103.3	r 103.1	0.2	r 0.2	0.2	-0.6	r -1.5	4.8	3.7	3.7
General machinery & equipment	51.8	98.6	r 98.6	0.0	r 0.7	-0.3	-4.4	r -5.6	1.0	1.1	0.7
Electric & electronic products	205.4	68.3	r 68.4	-0.1	r -0.3	0.0	-8.0	r -8.8	-2.8	-0.1	0.1
Transportation equipment	38.6	92.6	92.0	0.7	-0.6	0.3	-0.4	-2.3	4.7	1.8	1.7
Precision instruments	21.9	90.0	r 89.8	0.2	r 0.9	0.0	-2.9	r -4.6	1.2	1.5	0.6
Other primary products & manufactured goods	77.0	100.0	r 99.1	0.9	r 0.4	1.0	-1.1	r -2.9	6.5	3.0	3.1

Notes : 1. r: revised figures

2. Quarterly changes are changes from 3 months earlier.

Reference: Index by Stage of Demand and Use
(Preliminary Figures for February 2011)

CY2005 average = 100

	Weight	Index		Monthly change		Yearly change		Quarterly change
		(preliminary figures)	Previous month	(preliminary figures)	Previous month	(preliminary figures)	Previous month	
Domestic demand products	1,000.000	105.7	r 105.2	% 0.5	% 1.0	% 2.7	% 2.2	% 2.2
Domestic goods	813.030	104.1	103.9	0.2	0.5	1.7	1.6	1.1
Imports	186.970	112.7	r 110.9	1.6	r 2.6	7.6	r 5.2	7.3
Raw materials	78.589	141.2	r 137.1	3.0	r 4.0	16.3	r 13.4	11.6
Domestic goods	21.900	113.4	r 111.4	1.8	r 1.2	4.9	r 5.3	5.7
Imports	56.689	151.9	r 147.0	3.3	r 4.9	20.0	r 16.0	13.4
Intermediate materials	517.130	108.1	r 107.8	0.3	r 0.9	2.5	r 2.1	1.9
Domestic goods	448.624	108.8	108.5	0.3	0.8	2.5	2.3	1.6
Imports	68.506	103.9	r 103.0	0.9	r 1.4	2.5	r 0.5	4.6
Final goods	404.281	95.7	95.7	0.0	0.1	-0.3	-0.3	0.3
Domestic goods	342.506	97.4	97.4	0.0	0.0	0.1	0.2	0.0
Imports	61.775	86.4	86.4	0.0	0.6	-2.3	-3.0	1.9
Capital goods	131.235	93.9	r 94.1	-0.2	r 0.1	-1.4	r -1.4	-0.3
Domestic goods	115.697	97.2	97.3	-0.1	0.1	-0.7	-0.7	-0.3
Imports	15.538	69.6	r 69.8	-0.3	r -0.3	-7.4	r -7.9	-0.1
Consumer goods	273.046	96.6	96.5	0.1	0.1	0.3	0.2	0.6
Domestic goods	226.809	97.5	97.4	0.1	-0.1	0.5	0.5	0.2
Imports	46.237	92.0	r 92.0	0.0	r 0.9	-1.0	r -1.7	2.3
Durable consumer goods	82.800	82.7	82.9	-0.2	-0.4	-3.4	-3.7	-0.5
Domestic goods	68.853	83.9	r 84.1	-0.2	r -0.4	-3.3	r -3.4	-0.8
Imports	13.947	76.8	r 76.6	0.3	r -0.6	-3.9	r -5.7	1.3
Non-durable consumer goods	190.246	102.7	102.4	0.3	0.2	1.7	1.7	1.1
Domestic goods	157.956	103.5	103.2	0.3	0.0	2.0	2.1	0.7
Imports	32.290	98.6	r 98.6	0.0	r 1.3	0.2	r -0.3	2.8

Notes:

1. r: revised figures
2. Quarterly changes are changes from 3 months earlier.
3. These indexes are classified by stage of demand and use. Commodities of "Domestic Corporate Goods Price Index" and "Import Price Index" are classed as "Domestic demand products." Commodities used and consumed for production are defined as "Raw materials" (unprocessed materials) and "Intermediate materials" (processed materials), and those for final demand users as "Final goods." Indexes classified by stage of use are the subdivisions of those classified by stage of demand. Commodities of "Export Price Index" are classed as "Exports." Indexes for "Exports" are classified only by stage of use, but they are not included here.

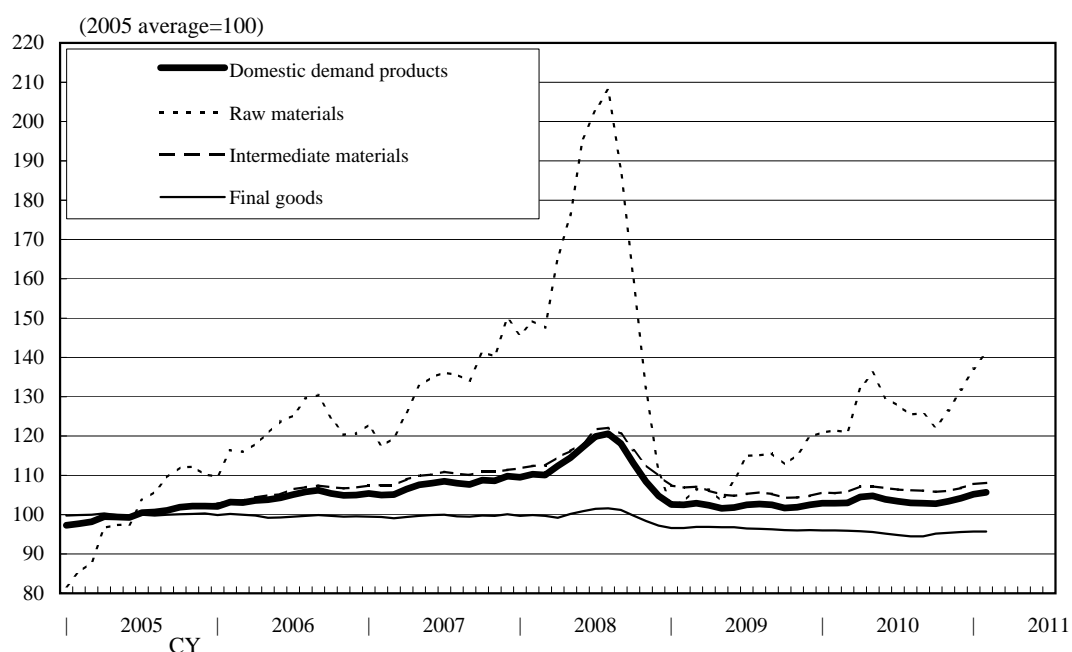
(Commodities contributing to the monthly changes in February 2011)

Domestic demand products (yen basis)		Monthly change	0.5 %
Classification by stage of demand	Monthly change	Commodities contributing to the change	
Raw materials <Weight: 78.589>	3.0 %	up: Crude petroleum (I), Liquefied natural gas (I), Coal for coke making (I), Iron & steel scrap, Pork down: Rape seeds (I)	
Intermediate materials <Weight: 517.130>	0.3 %	up: Fuel oil A, Unwrought nickel (I), Naphtha (I) down: Liquefied petroleum gas (I)	
Final goods <Weight: 404.281>	0.0 %		
Capital goods <Weight: 131.235>	-0.2 %	up: Machining centers down: Mold & die, Electrical meters & measuring instruments including semiconductor & IC measuring instruments (I), Industrial electric heaters	
Durable consumer goods <Weight: 82.800>	-0.2 %	up: Standard passenger cars (I) down: Cellular phones	
Nondurable consumer goods <Weight: 190.246>	0.3 %	up: Pork, Chicken eggs, Kerosene down: Liquefied petroleum gas (I)	

Note: (I) denotes commodities of "Import Price Index."

Commodities without (I) are those of "Domestic Corporate Goods Price Index."

(Developments in Index by Domestic demand products)



Reference: Domestic Corporate Goods Price Index
using Chain-weighted Index Formula
(Preliminary Figures for February 2011)

CY2005 average = 100

	Weight	Index (preliminary figures)	Previous month	Monthly change (preliminary figures)	Previous month	Yearly change (preliminary figures)	Previous month	Quarterly change (preliminary figures)
All commodities	1,000.0	104.2	104.0	% 0.2	% 0.6	% 1.6	% 1.5	% 1.2
excluding extra charges for summer electricity	1,000.0	104.3	r 104.1	0.2	r 0.7	1.6	r 1.5	1.3
Manufacturing industry products	914.2	103.6	103.4	0.2	0.7	1.4	1.1	1.2
Processed foodstuffs	107.5	109.1	r 109.1	0.0	r 0.3	3.2	r 3.4	0.1
Textile products	11.1	108.6	r 108.3	0.3	r -0.4	3.6	r 3.6	-0.1
Lumber & wood products	8.7	108.4	107.8	0.6	0.3	4.2	4.0	0.7
Pulp, paper & related products	27.4	109.1	r 109.3	-0.2	r 0.0	-1.6	r -1.4	-0.5
Chemicals & related products	84.5	105.3	r 104.7	0.6	r 1.3	-0.4	r -0.9	1.9
Plastic products	36.3	104.5	r 104.5	0.0	r 0.0	-1.0	r -1.0	-0.3
Petroleum & coal products	70.0	131.1	130.1	0.8	5.9	11.1	10.9	10.4
Ceramic, stone & clay products	24.1	109.0	r 109.1	-0.1	r 0.2	0.4	r 0.1	0.1
Iron & steel	65.1	123.5	122.9	0.5	0.9	12.1	11.7	1.9
Nonferrous metals	27.6	143.3	r 141.2	1.5	r 2.1	10.5	r 7.1	6.3
Metal products	35.0	104.9	105.3	-0.4	-0.1	0.0	-0.4	-0.8
General machinery & equipment	106.6	98.8	r 98.9	-0.1	r 0.1	-0.4	r -0.4	-0.3
Electrical machinery & equipment	49.1	87.3	r 87.4	-0.1	r -0.5	-3.7	r -4.3	-0.3
Information & communications equipment	37.8	59.5	r 60.1	-1.0	r -1.0	-8.9	r -8.7	-2.8
Electronic components & devices	31.0	73.6	r 73.9	-0.4	r -0.9	-6.0	r -6.0	-1.6
Transportation equipment	124.9	101.7	101.6	0.1	0.0	-1.1	-1.3	0.3
Precision instruments	10.8	97.0	r 97.2	-0.2	r 0.2	-0.6	r -0.4	0.0
Other manufacturing industry products	56.7	99.9	r 99.8	0.1	r 1.0	-1.3	r -1.0	1.0
Agriculture, forestry & fishery products	23.5	97.1	r 94.5	2.8	r -3.0	0.6	r -0.3	2.6
Minerals	3.1	115.5	r 115.5	0.0	r -0.1	2.1	r 2.1	0.0
Electric power, gas & water	49.6	103.5	104.1	-0.6	-0.7	1.3	2.9	-2.0
Scrap & waste	9.6	177.8	r 171.6	3.6	r 7.0	23.6	r 31.6	22.4
<Reference>								
Electric & electronic products	117.9	73.9	r 74.2	-0.4	r -0.8	-6.0	r -6.2	-1.5

Notes: 1. r: revised figures

2. Quarterly changes are changes from 3 months earlier.

3. "Domestic Corporate Goods Price Index using Chain-weighted index Formula" is classified in the same way as that of "Domestic Corporate Goods Price Index." Weights are updated annually and indexes are chained with the indexes of the previous year. The indexes are based on the year 2008 weights.

4. "Electrical & electronic products" is compiled by combining "Electrical machinery & equipment," "Information & communications equipment," and "Electronic components & devices."