



Bank of Japan

Research and Statistics Department

FOR RELEASE 8:50 A.M.

Wednesday, April 12, 2017

Monthly Report on the Corporate Goods Price Index

(Preliminary Figures for March 2017)

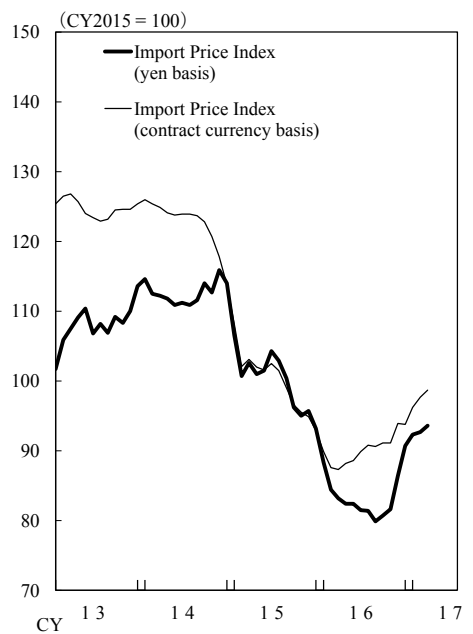
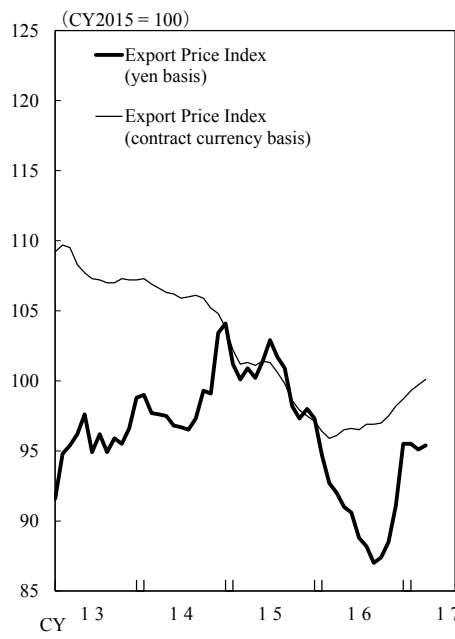
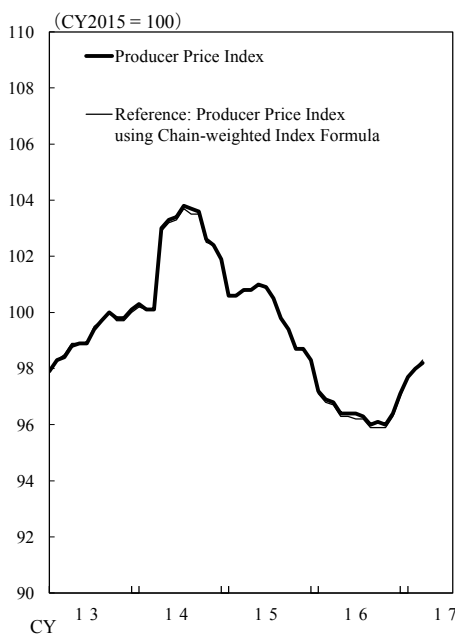
- ❖ The Producer Price Index rose 0.2 percent from the previous month.
- ❖ The Export Price Index (contract currency basis) rose 0.4 percent from the previous month.
- ❖ The Import Price Index (contract currency basis) rose 1.0 percent from the previous month.

CY2015 = 100, %

	Producer Price Index			Export Price Index				Import Price Index				Foreign exchange rate \$/yen Monthly change
	Monthly change	Yearly change	excluding extra charges for summer electricity	Yen basis		Contract currency basis		Yen basis		Contract currency basis		
				Monthly change	Yearly change	Monthly change	Yearly change	Monthly change	Yearly change	Monthly change	Yearly change	
2016/ Feb.	-0.3	-3.7	-0.3	-2.1	-7.4	-0.5	-5.2	-4.4	-16.2	-2.6	-14.2	-2.8
Mar.	-0.1	-4.0	-0.1	-0.8	-8.8	0.2	-5.1	-1.4	-18.9	-0.3	-15.3	-1.8
Apr.	-0.4	-4.4	-0.4	-1.1	-9.2	0.4	-4.5	-1.0	-18.4	1.0	-13.5	-2.8
May	0.0	-4.6	0.0	-0.4	-10.7	0.1	-4.7	0.0	-18.8	0.5	-12.8	-0.6
June	0.0	-4.5	0.0	-2.0	-13.7	-0.1	-4.7	-1.1	-21.9	1.5	-12.3	-3.3
July	-0.1	-4.2	-0.3	-0.7	-13.3	0.4	-3.7	-0.1	-20.9	1.0	-10.5	-1.4
Aug.	-0.3	-3.8	-0.3	-1.4	-13.8	0.0	-2.9	-1.8	-20.4	-0.2	-8.5	-2.5
Sep.	0.1	-3.3	0.0	0.5	-11.0	0.1	-1.6	1.0	-16.1	0.6	-5.7	0.6
Oct.	-0.1	-2.7	0.2	1.3	-9.0	0.5	-0.4	1.1	-14.1	0.0	-4.6	1.8
Nov.	0.4	-2.3	0.4	2.9	-7.0	0.7	0.7	5.9	-9.7	3.1	-1.1	4.2
Dec.	0.7	-1.2	0.7	4.8	-1.8	0.5	1.6	5.0	-2.7	-0.1	1.0	7.3
2017/ Jan.	0.6	0.5	0.6	0.0	0.8	0.6	3.0	1.8	4.5	2.6	7.0	-1.0
Feb.	r 0.3	r 1.1	r 0.3	r -0.4	r 2.6	0.4	4.0	r 0.4	r 9.8	r 1.6	r 11.5	-1.4
Mar. Preliminary Figures	0.2	1.4	0.2	0.3	3.7	0.4	4.2	1.0	12.5	1.0	13.1	-0.1
Index	98.2		98.2	95.4		100.1		93.6		98.7		113.0

Notes: 1. A negative change in the "Foreign exchange rate" indicates an appreciation of the yen.

2. r: revised figures



(Commodities contributing to the monthly changes in March 2017)

Producer Price Index		Monthly change 0.2 %
Groups	Contribution to change	Commodities
Petroleum & coal products	0.15 %	Gasoline, Gas oil, Liquefied petroleum gas
Electric power, gas & water	0.07 %	Industrial extra high tension power, Commercial high tension power, Industrial high tension power
Scrap & waste	0.04 %	Iron & steel scrap, Aluminum & aluminum alloy scrap
Iron & steel	0.02 %	Light steel bars, Cold finished bars, Hot rolled steel strips
Agriculture, forestry & fishery products	0.01 %	Chicken eggs, Brown rice, Cooked & dried whitebait
Chemicals & related products	-0.04 %	Benzene, Styrene monomer, Butadiene
Electrical machinery & equipment	-0.02 %	Monitoring & control equipment, Household refrigerators & freezers, Electric rice cookers

Export Price Index (contract currency basis)		Monthly change 0.4 %
Groups	Contribution to change	Commodities
Chemicals & related products	0.24 %	Styrene monomer, Para-xylene, Toluylene diisocyanate
Metals & related products	0.10 %	Hot rolled steel strips, Unwrought copper, Heavy & medium steel plates
Electric & electronic products	0.06 %	MOS memory integrated circuits, Silicon wafers, Printed circuit boards
Transportation equipment	-0.02 %	Drive, transmission & steering parts, Passenger vehicles (hybrid & clean energy vehicles), Forklift trucks & parts

Import Price Index (contract currency basis)		Monthly change 1.0 %
Groups	Contribution to change	Commodities
Petroleum, coal & natural gas	0.36 %	Crude petroleum, Naphtha, Liquefied petroleum gas
Metals & related products	0.25 %	Ferro-chromium, Copper ores, Unwrought cobalt
Chemicals & related products	0.18 %	Lithium carbonates, General purpose plastics (except saturated polyester resins), Methanol
Electric & electronic products	0.08 %	Storage media, MOS memory integrated circuits, Solar batteries
Other primary products & manufactured goods	0.06 %	Natural rubber, Plastic films & sheets, Bleached paper kraft pulp
Transportation equipment	0.02 %	Standard passenger cars (gasoline cars), Passenger vehicles (hybrid & clean energy vehicles), Bicycles

Producer Price Index

(Preliminary Figures for March 2017)

CY2015 = 100, %

	Weight	Index		Monthly change		Yearly change	
			Previous month		Previous month		Previous month
All commodities	1,000.0	98.2	r 98.0	0.2	r 0.3	1.4	r 1.1
excluding extra charges for summer electricity	1,000.0	98.2	r 98.0	0.2	r 0.3	1.4	r 1.1
Beverages & foods	141.6	99.9	99.9	0.0	0.1	-0.4	-0.5
Textile products	9.6	99.4	r 99.0	0.4	r 0.7	-0.7	r -0.9
Lumber & wood products	9.2	101.8	101.9	-0.1	0.6	1.2	1.2
Pulp, paper & related products	27.7	98.8	r 98.8	0.0	r -0.1	-1.2	r -1.2
Chemicals & related products	89.2	95.5	96.0	-0.5	1.1	-0.3	0.5
Petroleum & coal products	59.5	101.0	r 98.6	2.4	r 0.6	30.8	r 27.7
Plastic products	38.2	95.5	r 95.6	-0.1	r -0.2	-2.7	r -2.7
Ceramic, stone & clay products	23.3	99.5	99.6	-0.1	-0.1	-0.4	-0.4
Iron & steel	51.7	99.6	r 99.2	0.4	r 1.4	5.6	r 4.9
Nonferrous metals	27.1	95.8	95.8	0.0	1.1	7.2	8.2
Metal products	40.0	100.1	100.0	0.1	0.0	0.5	0.2
General purpose machinery	27.2	99.9	r 99.9	0.0	r 0.2	-0.4	r -0.8
Production machinery	41.1	99.4	r 99.3	0.1	r -0.7	-1.5	r -1.1
Business oriented machinery	16.2	102.3	r 102.3	0.0	r -0.4	1.3	r 1.6
Electronic components & devices	24.5	97.6	r 97.6	0.0	r 0.2	0.5	r 0.3
Electrical machinery & equipment	52.7	95.8	96.2	-0.4	-0.1	-2.8	-2.7
Information & communications equipment	20.8	98.5	98.4	0.1	-0.1	-1.6	-1.9
Transportation equipment	140.7	98.7	r 98.7	0.0	r -0.1	-0.9	r -1.0
Other manufacturing industry products	48.0	99.9	99.9	0.0	0.0	-0.1	-0.1
Agriculture, forestry & fishery products	35.8	105.8	r 105.5	0.3	r 0.7	4.8	r 3.7
Minerals	3.9	93.4	r 93.4	0.0	r 0.6	-3.9	r -4.4
Electric power, gas & water	67.1	86.7	r 85.7	1.2	r 1.5	-3.7	r -6.3
Scrap & waste	4.9	119.3	112.2	6.3	0.2	41.2	36.8

Notes: 1. The index of "All commodities excluding extra charges for summer electricity" adjusts extra charges applied during summer season from July to September.

2. r: revised figures

Export Price Index (Preliminary Figures for March 2017)

CY2015 = 100, %

	Weight	Index		Monthly change			Yearly change		
		Yen basis	Previous month	Yen basis	Previous month	Contract currency basis	Yen basis	Previous month	Contract currency basis
All commodities	1,000.0	95.4	r 95.1	0.3	r -0.4	0.4	3.7	r 2.6	4.2
Textiles	13.8	93.5	r 92.7	0.9	r 0.5	0.9	1.2	r -0.1	1.8
Chemicals & related products	98.4	102.6	r 100.4	2.2	r 0.8	2.4	19.2	r 15.8	19.7
Metals & related products	108.5	103.2	r 102.4	0.8	r 0.4	0.7	17.9	r 18.9	17.9
General purpose, production & business oriented machinery	189.4	95.8	r 95.8	0.0	r -0.9	-0.1	-0.9	r -1.3	-0.5
Electric & electronic products	205.5	92.1	91.9	0.2	-0.5	0.3	0.1	-2.1	0.6
Transportation equipment	285.2	94.4	94.6	-0.2	-0.7	-0.1	-0.8	-1.5	-0.1
Other primary products & manufactured goods	99.2	89.1	r 89.1	0.0	r 0.0	0.1	4.8	r 3.6	5.2

Note: r: revised figures

Import Price Index (Preliminary Figures for March 2017)

CY2015 = 100, %

	Weight	Index		Monthly change			Yearly change		
		Yen basis	Previous month	Yen basis	Previous month	Contract currency basis	Yen basis	Previous month	Contract currency basis
All commodities	1,000.0	93.6	r 92.7	1.0	r 0.4	1.0	12.5	r 9.8	13.1
Beverages & foods and agriculture products for food	80.4	92.8	92.9	-0.1	-0.5	-0.2	3.8	2.2	4.0
Textiles	61.3	95.6	r 95.5	0.1	r -0.5	0.1	-1.4	r -2.3	-1.0
Metals & related products	95.8	95.7	r 93.4	2.5	r 0.8	2.6	19.6	r 16.9	20.0
Lumber & wood products and forest products	17.3	92.9	r 92.3	0.7	r -1.3	0.7	1.5	r -0.5	2.3
Petroleum, coal & natural gas	252.3	96.3	r 95.0	1.4	r 3.5	1.4	57.6	r 51.5	57.7
Chemicals & related products	94.7	96.5	94.8	1.8	-0.4	1.9	6.6	3.8	7.3
General purpose, production & business oriented machinery	68.1	91.9	91.7	0.2	-0.9	0.1	-0.5	-1.9	-0.3
Electric & electronic products	196.6	87.7	r 87.4	0.3	r -0.7	0.4	-4.2	r -6.2	-4.0
Transportation equipment	49.5	95.5	95.0	0.5	-0.5	0.5	-0.4	-2.2	0.2
Other primary products & manufactured goods	84.0	93.5	92.9	0.6	-0.5	0.7	0.8	-1.5	1.1

Note: r: revised figures

Index by Stage of Demand and Use (Preliminary Figures for March 2017)

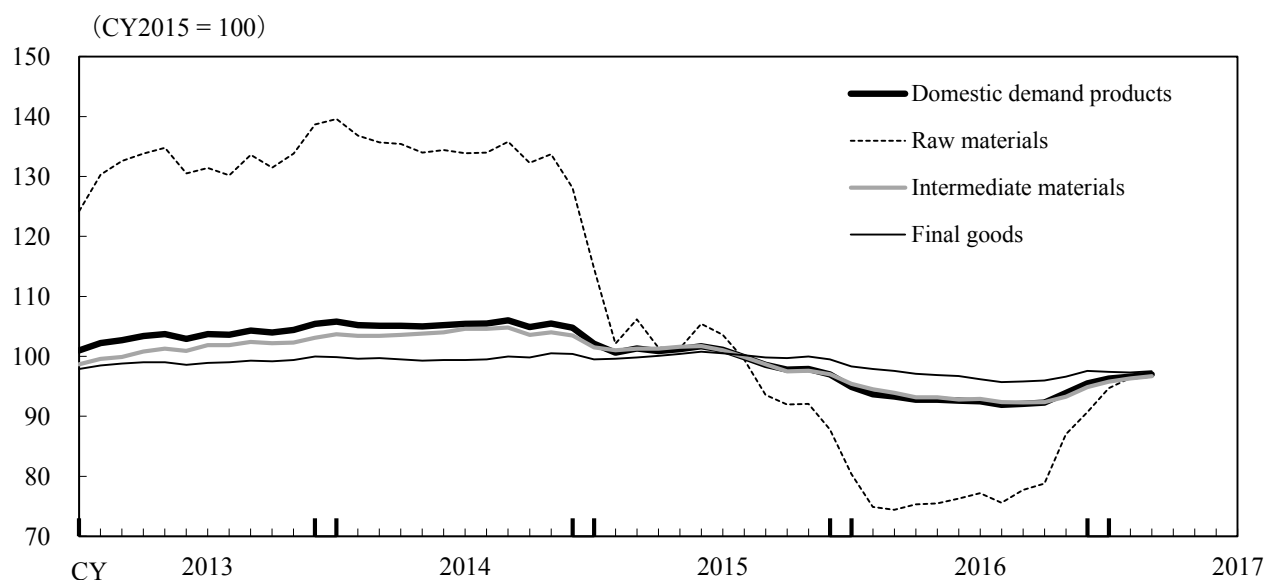
CY2015 = 100, %

	Weight	Index	Monthly change	Yearly change		
				Previous month	Previous month	
Domestic demand products	1,000.000	97.0	0.4	0.3	4.0	3.1
Domestic goods	744.660	98.2	0.2	r 0.3	1.4	r 1.1
Imports	255.340	93.6	1.0	r 0.4	12.5	r 9.8
Raw materials	100.163	97.5	1.1	r 1.8	31.0	r 28.7
Domestic goods	26.060	105.6	1.1	r 0.5	7.4	r 6.1
Imports	74.103	94.7	1.2	r 2.3	43.3	r 40.5
Intermediate materials	535.481	96.7	0.4	r 0.5	3.0	r 1.9
Domestic goods	448.097	97.1	0.2	r 0.5	1.8	r 1.4
Imports	87.384	94.4	1.6	r 0.0	9.3	r 5.0
Final goods	364.356	97.5	0.2	-0.1	-0.1	-0.6
Domestic goods	270.503	99.3	0.1	0.0	0.3	0.3
Imports	93.853	92.0	0.1	-0.4	-1.8	-3.0
Capital goods	112.246	98.0	0.1	r -0.4	-0.6	r -0.8
Domestic goods	87.827	99.7	0.1	r -0.3	-0.4	r -0.4
Imports	24.419	91.9	0.1	r -0.9	-1.5	r -2.5
Consumer goods	252.110	97.2	0.2	r 0.0	0.0	r -0.5
Domestic goods	182.676	99.2	0.3	0.1	0.8	0.5
Imports	69.434	92.1	0.2	-0.3	-1.9	-3.2
Durable consumer goods	67.121	93.7	-0.1	-0.3	-3.5	-4.0
Domestic goods	42.200	98.1	-0.2	-0.1	-1.5	-1.6
Imports	24.921	86.4	0.3	-0.7	-6.9	-8.3
Nondurable consumer goods	184.989	98.5	0.3	r 0.1	1.3	r 0.8
Domestic goods	140.476	99.5	0.4	r 0.1	1.4	r 1.1
Imports	44.513	95.3	0.2	r -0.1	0.8	r -0.4

Notes: 1. These indexes are compiled by reclassifying the "Producer Price Index excluding the consumption tax," "Export Price Index" and "Import Price Index" in terms of commodities' stage of demand or use of goods.

2. r: revised figures

(Index by Stage of Demand and Use)



Producer Price Index
using Chain-weighted Index Formula
(Preliminary Figures for March 2017)

CY2015 = 100, %

	Weight	Index	Monthly change	Previous month		Yearly change	Previous month	
All commodities	1,000.0	98.3	0.3	r	0.3	1.7	r	1.2
excluding extra charges for summer electricity	1,000.0	98.3	0.3	r	0.3	1.7	r	1.2
Beverages & foods	141.6	99.9	0.0	r	0.1	-0.4	r	-0.5
Textile products	9.6	99.3	0.4	r	0.7	-0.8	r	-0.9
Lumber & wood products	9.2	101.7	-0.1		0.6	1.2		1.1
Pulp, paper & related products	27.7	98.8	0.0	r	-0.1	-1.2	r	-1.2
Chemicals & related products	89.2	95.4	-0.3		0.9	-0.2		0.3
Petroleum & coal products	59.5	101.4	2.4	r	0.6	31.5	r	28.4
Plastic products	38.2	95.3	-0.2	r	-0.2	-2.9	r	-2.8
Ceramic, stone & clay products	23.3	99.3	-0.2		-0.1	-0.5		-0.5
Iron & steel	51.7	99.5	0.4	r	1.5	5.6	r	4.8
Nonferrous metals	27.1	96.1	0.1		1.1	7.6		8.6
Metal products	40.0	100.0	0.1		0.0	0.5		0.2
General purpose machinery	27.2	99.9	0.0	r	0.2	-0.3	r	-0.7
Production machinery	41.1	99.3	0.1	r	-0.8	-1.5	r	-1.1
Business oriented machinery	16.2	102.2	0.0	r	-0.4	1.3	r	1.5
Electronic components & devices	24.5	97.3	-0.1	r	0.3	0.4	r	0.2
Electrical machinery & equipment	52.7	95.7	-0.3		-0.1	-2.8		-2.9
Information & communications equipment	20.8	98.4	0.1		0.0	-1.7		-2.0
Transportation equipment	140.7	98.6	0.0	r	-0.2	-1.0	r	-1.1
Other manufacturing industry products	48.0	99.8	0.0		0.0	-0.1		-0.1
Agriculture, forestry & fishery products	35.8	105.6	0.2	r	0.8	4.6	r	3.5
Minerals	3.9	93.2	0.0	r	0.8	-4.0	r	-4.5
Electric power, gas & water	67.1	86.6	1.3	r	1.7	-3.8	r	-6.6
Scrap & waste	4.9	122.0	5.9		0.3	43.7		40.3

Notes: 1. The index of "All commodities excluding extra charges for summer electricity" adjusts extra charges applied during summer season from July to September.

2. The indexes are based on the year 2015 weights.

3. r: revised figures

Corporate Goods Price Index

Time Series Data

CY2015 = 100, %

	Producer Price Index						Export Price Index							
	All commodities				(Reference) excluding extra charges for summer electricity		All commodities (yen basis)				All commodities (contract currency basis)			
		Monthly (Quarterly) change	Yearly change	Change from three months earlier	Monthly (Quarterly) change	Change from three months earlier		Monthly (Quarterly) change	Yearly change	Change from three months earlier		Monthly (Quarterly) change	Yearly change	Change from three months earlier
CY 2015	100.0	—	—	—	—	—	100.0	—	—	—	100.0	—	—	—
2016	96.5	—	-3.5	—	—	—	90.6	—	-9.4	—	96.9	—	-3.1	—
FY 2015	99.1	—	—	—	—	—	98.1	—	—	—	98.6	—	—	—
2016	96.8	—	-2.3	—	—	—	91.2	—	-7.0	—	97.8	—	-0.8	—
2016/ Q2	96.4	-0.6	-4.5	—	-0.6	—	90.1	-3.2	-11.2	—	96.5	0.4	-4.7	—
Q3	96.1	-0.3	-3.8	—	-0.5	—	87.5	-2.9	-12.8	—	96.9	0.4	-2.8	—
Q4	96.5	0.4	-2.1	—	0.6	—	91.7	4.8	-5.9	—	98.1	1.2	0.6	—
2017/ Q1	98.0	1.6	1.0	—	1.6	—	95.3	3.9	2.4	—	99.7	1.6	3.7	—
2016/ Feb.	96.9	-0.3	-3.7	-1.8	-0.3	-1.8	92.7	-2.1	-7.4	-5.4	95.9	-0.5	-5.2	-1.6
Mar.	96.8	-0.1	-4.0	-1.5	-0.1	-1.5	92.0	-0.8	-8.8	-5.4	96.1	0.2	-5.1	-1.0
Apr.	96.4	-0.4	-4.4	-0.8	-0.4	-0.8	91.0	-1.1	-9.2	-3.9	96.5	0.4	-4.5	0.1
May	96.4	0.0	-4.6	-0.5	0.0	-0.5	90.6	-0.4	-10.7	-2.3	96.6	0.1	-4.7	0.7
June	96.4	0.0	-4.5	-0.4	0.0	-0.4	88.8	-2.0	-13.7	-3.5	96.5	-0.1	-4.7	0.4
July	96.3	-0.1	-4.2	-0.1	-0.3	-0.3	88.2	-0.7	-13.3	-3.1	96.9	0.4	-3.7	0.4
Aug.	96.0	-0.3	-3.8	-0.4	-0.3	-0.6	87.0	-1.4	-13.8	-4.0	96.9	0.0	-2.9	0.3
Sep.	96.1	0.1	-3.3	-0.3	0.0	-0.6	87.4	0.5	-11.0	-1.6	97.0	0.1	-1.6	0.5
Oct.	96.0	-0.1	-2.7	-0.3	0.2	-0.1	88.5	1.3	-9.0	0.3	97.5	0.5	-0.4	0.6
Nov.	96.4	0.4	-2.3	0.4	0.4	0.6	91.1	2.9	-7.0	4.7	98.2	0.7	0.7	1.3
Dec.	97.1	0.7	-1.2	1.0	0.7	1.4	95.5	4.8	-1.8	9.3	98.7	0.5	1.6	1.8
2017/ Jan.	97.7	0.6	0.5	1.8	0.6	1.8	95.5	0.0	0.8	7.9	99.3	0.6	3.0	1.8
Feb.	98.0	0.3	1.1	1.7	0.3	1.7	95.1	-0.4	2.6	4.4	99.7	0.4	4.0	1.5
Mar.	98.2	0.2	1.4	1.1	0.2	1.1	95.4	0.3	3.7	-0.1	100.1	0.4	4.2	1.4

CY2015 = 100, %

	Import Price Index								Foreign exchange rate \$/yen	
	All commodities (yen basis)				All commodities (contract currency basis)					
		Monthly (Quarterly) change	Yearly change	Change from three months earlier		Monthly (Quarterly) change	Yearly change	Change from three months earlier		Monthly (Quarterly) (Yearly) change
CY 2015	100.0	—	—	—	100.0	—	—	—	14.4	
2016	83.6	—	-16.4	—	90.2	—	-9.8	—	-10.1	
FY 2015	95.5	—	—	—	95.9	—	—	—	9.3	
2016	85.5	—	-10.5	—	92.6	—	-3.4	—	-9.8	
2016/ Q2	82.1	-3.8	-19.7	—	88.9	0.7	-12.8	—	-6.4	
Q3	80.7	-1.7	-19.1	—	90.8	2.1	-8.3	—	-5.3	
Q4	86.2	6.8	-8.9	—	92.9	2.3	-1.6	—	6.7	
2017/ Q1	92.9	7.8	8.9	—	97.5	5.0	10.4	—	4.0	
2016/ Feb.	84.4	-4.4	-16.2	-11.8	87.6	-2.6	-14.2	-7.7	-2.8	
Mar.	83.2	-1.4	-18.9	-10.7	87.3	-0.3	-15.3	-6.0	-1.8	
Apr.	82.4	-1.0	-18.4	-6.7	88.2	1.0	-13.5	-1.9	-2.8	
May	82.4	0.0	-18.8	-2.4	88.6	0.5	-12.8	1.1	-0.6	
June	81.5	-1.1	-21.9	-2.0	89.9	1.5	-12.3	3.0	-3.3	
July	81.4	-0.1	-20.9	-1.2	90.8	1.0	-10.5	2.9	-1.4	
Aug.	79.9	-1.8	-20.4	-3.0	90.6	-0.2	-8.5	2.3	-2.5	
Sep.	80.7	1.0	-16.1	-1.0	91.1	0.6	-5.7	1.3	0.6	
Oct.	81.6	1.1	-14.1	0.2	91.1	0.0	-4.6	0.3	1.8	
Nov.	86.4	5.9	-9.7	8.1	93.9	3.1	-1.1	3.6	4.2	
Dec.	90.7	5.0	-2.7	12.4	93.8	-0.1	1.0	3.0	7.3	
2017/ Jan.	92.3	1.8	4.5	13.1	96.2	2.6	7.0	5.6	-1.0	
Feb.	92.7	0.4	9.8	7.3	97.7	1.6	11.5	4.0	-1.4	
Mar.	93.6	1.0	12.5	3.2	98.7	1.0	13.1	5.2	-0.1	

Note: A negative change in the "Foreign exchange rate" indicates an appreciation of the yen.

Index by Stage of Demand and Use

Time Series Data

CY2015 = 100, %

		Domestic demand products								
					Raw materials			Intermediate materials		
			Monthly (Quarterly) change	Yearly change		Monthly (Quarterly) change	Yearly change		Monthly (Quarterly) change	Yearly change
CY	2015	100.0	—	—	100.0	—	—	100.0	—	—
	2016	93.2	—	-6.8	78.7	—	-21.3	93.4	—	-6.6
FY	2015	98.2	—	—	92.2	—	—	98.3	—	—
	2016	93.9	—	-4.4	83.6	—	-9.3	93.9	—	-4.5
2016/	Q2	92.7	-1.4	-8.5	75.7	-1.2	-26.3	93.1	-1.6	-8.3
	Q3	92.2	-0.5	-7.7	76.8	1.5	-22.3	92.5	-0.6	-7.4
	Q4	93.9	1.8	-3.8	85.5	11.3	-5.6	93.5	1.1	-4.0
2017/	Q1	96.6	2.9	2.8	96.2	12.5	25.6	96.3	3.0	1.8
2016/	Feb.	93.7	-1.3	-6.9	74.9	-6.8	-26.6	94.5	-0.9	-6.4
	Mar.	93.3	-0.4	-7.9	74.4	-0.7	-29.9	93.9	-0.6	-7.3
	Apr.	92.8	-0.5	-8.0	75.3	1.2	-25.8	93.2	-0.7	-8.0
	May	92.8	0.0	-8.3	75.5	0.3	-25.5	93.2	0.0	-8.3
	June	92.6	-0.2	-8.9	76.3	1.1	-27.6	92.8	-0.4	-8.8
	July	92.5	-0.1	-8.5	77.2	1.2	-25.5	92.9	0.1	-8.0
	Aug.	91.9	-0.6	-8.0	75.6	-2.1	-24.0	92.4	-0.5	-7.5
	Sep.	92.1	0.2	-6.6	77.7	2.8	-17.0	92.3	-0.1	-6.5
	Oct.	92.3	0.2	-5.6	78.8	1.4	-14.3	92.4	0.1	-5.2
	Nov.	93.9	1.7	-4.1	87.0	10.4	-5.5	93.3	1.0	-4.4
	Dec.	95.5	1.7	-1.5	90.7	4.3	3.3	94.9	1.7	-2.2
2017/	Jan.	96.3	0.8	1.5	94.7	4.4	17.8	95.8	0.9	0.4
	Feb.	96.6	0.3	3.1	96.4	1.8	28.7	96.3	0.5	1.9
	Mar.	97.0	0.4	4.0	97.5	1.1	31.0	96.7	0.4	3.0

CY2015 = 100, %

		Domestic demand products (Cont'd)								
		Final goods			Capital goods			Consumer goods		
			Monthly (Quarterly) change	Yearly change		Monthly (Quarterly) change	Yearly change		Monthly (Quarterly) change	Yearly change
CY	2015	100.0	—	—	100.0	—	—	100.0	—	—
	2016	96.9	—	-3.1	97.9	—	-2.1	96.4	—	-3.6
FY	2015	99.6	—	—	99.7	—	—	99.5	—	—
	2016	96.7	—	-2.9	97.7	—	-2.0	96.3	—	-3.2
2016/	Q2	96.9	-1.0	-3.5	98.0	-0.8	-2.1	96.4	-1.2	-4.2
	Q3	95.9	-1.0	-4.3	97.1	-0.9	-2.9	95.3	-1.1	-4.9
	Q4	96.7	0.8	-3.0	97.7	0.6	-2.1	96.3	1.0	-3.4
2017/	Q1	97.4	0.7	-0.5	98.1	0.4	-0.7	97.1	0.8	-0.5
2016/	Feb.	97.9	-0.4	-1.7	98.7	-0.3	-1.5	97.5	-0.5	-1.8
	Mar.	97.6	-0.3	-2.2	98.6	-0.1	-1.4	97.2	-0.3	-2.6
	Apr.	97.1	-0.5	-3.0	98.3	-0.3	-1.7	96.6	-0.6	-3.5
	May	96.9	-0.2	-3.5	98.0	-0.3	-2.1	96.4	-0.2	-4.1
	June	96.7	-0.2	-4.1	97.7	-0.3	-2.6	96.2	-0.2	-4.8
	July	96.2	-0.5	-4.3	97.5	-0.2	-2.7	95.6	-0.6	-5.1
	Aug.	95.7	-0.5	-4.5	96.9	-0.6	-3.1	95.1	-0.5	-5.1
	Sep.	95.8	0.1	-4.0	97.0	0.1	-2.8	95.3	0.2	-4.5
	Oct.	96.0	0.2	-3.7	97.0	0.0	-2.6	95.5	0.2	-4.3
	Nov.	96.6	0.6	-3.4	97.6	0.6	-2.5	96.1	0.6	-3.8
	Dec.	97.6	1.0	-1.9	98.5	0.9	-1.1	97.3	1.2	-2.2
2017/	Jan.	97.4	-0.2	-0.9	98.3	-0.2	-0.7	97.0	-0.3	-1.0
	Feb.	97.3	-0.1	-0.6	97.9	-0.4	-0.8	97.0	0.0	-0.5
	Mar.	97.5	0.2	-0.1	98.0	0.1	-0.6	97.2	0.2	0.0

The next monthly report will be released on Monday, May 15, 2017.

Appendix

Producer Price Index (Preliminary Figures for FY2016)

CY2015 = 100, %

	Weight	Index	Yearly change	FY2015
All commodities	1,000.0	96.8	-2.3	-3.2
excluding extra charges for summer electricity	1,000.0	96.7	-2.3	-3.3
Beverages & foods	141.6	100.0	-0.2	1.0
Textile products	9.6	99.4	-0.7	0.5
Lumber & wood products	9.2	101.0	1.1	-2.0
Pulp, paper & related products	27.7	99.2	-0.9	0.8
Chemicals & related products	89.2	92.8	-5.9	-7.0
Petroleum & coal products	59.5	88.8	-5.7	-24.0
Plastic products	38.2	96.3	-2.9	-2.2
Ceramic, stone & clay products	23.3	99.5	-0.5	0.6
Iron & steel	51.7	95.1	-3.0	-5.6
Nonferrous metals	27.1	88.8	-7.9	-4.7
Metal products	40.0	99.8	-0.3	0.7
General purpose machinery	27.2	100.1	-0.1	0.9
Production machinery	41.1	100.2	0.0	0.4
Business oriented machinery	16.2	102.0	2.0	-0.3
Electronic components & devices	24.5	96.9	-2.2	-2.4
Electrical machinery & equipment	52.7	96.9	-2.9	-0.7
Information & communications equipment	20.8	99.1	-1.0	-0.5
Transportation equipment	140.7	99.0	-1.0	0.3
Other manufacturing industry products	48.0	100.1	0.1	0.0
Agriculture, forestry & fishery products	35.8	103.6	2.8	1.0
Minerals	3.9	93.1	-5.6	-2.7
Electric power, gas & water	67.1	85.8	-11.2	-7.9
Scrap & waste	4.9	99.4	6.8	-24.5

Notes: 1. The index of "All commodities excluding extra charges for summer electricity" adjusts extra charges applied during summer season from July to September.

2. Yearly changes in FY2015 are calculated as follows.

"All commodities":

Calculated by the FY2015 index and the FY2014 index of the 2010-base index.

Other than "All commodities":

Calculated by the FY2015 index (2015-base index) and the FY2014 index (2015-base linked index for Apr.-Dec. 2014; 2015-base index for Jan.-Mar. 2015).

Export Price Index (Preliminary Figures for FY2016)

CY2015 = 100, %

	Weight	Yen basis			Contract currency basis		
		Index	Yearly change	FY2015	Index	Yearly change	FY2015
All commodities	1,000.0	91.2	-7.0	-1.5	97.8	-0.8	-5.6
Textiles	13.8	89.6	-8.6	-0.2	96.2	-2.3	-6.8
Chemicals & related products	98.4	91.0	-6.5	-6.2	98.6	0.8	-11.6
Metals & related products	108.5	92.1	-3.2	-9.0	100.3	5.0	-15.3
General purpose, production & business oriented machinery	189.4	95.0	-4.5	2.3	99.4	-0.5	-0.1
Electric & electronic products	205.5	89.0	-9.3	1.1	95.4	-3.2	-3.4
Transportation equipment	285.2	92.3	-7.0	3.1	99.6	-0.4	-0.7
Other primary products & manufactured goods	99.2	84.8	-11.9	-10.1	91.5	-5.5	-15.2

Note: Yearly changes in FY2015 are calculated as follows.

"All commodities":

Calculated by the FY2015 index and the FY2014 index of the 2010-base index.

Other than "All commodities":

Calculated by the FY2015 index (2015-base index) and the FY2014 index (2015-base linked index for Apr.-Dec. 2014; 2015-base index for Jan.-Mar. 2015).

Import Price Index (Preliminary Figures for FY2016)

CY2015 = 100, %

	Weight	Yen basis			Contract currency basis		
		Index	Yearly change	FY2015	Index	Yearly change	FY2015
All commodities	1,000.0	85.5	-10.5	-13.7	92.6	-3.4	-18.3
Beverages & foods and agriculture products for food	80.4	88.7	-8.6	-2.2	96.1	-1.5	-7.0
Textiles	61.3	94.7	-5.1	5.8	98.8	-1.3	1.5
Metals & related products	95.8	83.2	-10.6	-16.4	91.2	-2.6	-22.7
Lumber & wood products and forest products	17.3	88.4	-10.1	3.0	98.4	-0.7	-3.2
Petroleum, coal & natural gas	252.3	75.8	-14.7	-36.5	84.0	-5.8	-41.7
Chemicals & related products	94.7	90.7	-7.4	0.7	95.9	-2.4	-2.1
General purpose, production & business oriented machinery	68.1	89.6	-8.9	1.7	96.4	-2.4	-3.7
Electric & electronic products	196.6	86.5	-12.1	2.5	93.1	-5.9	-2.8
Transportation equipment	49.5	93.5	-6.1	4.0	99.8	-0.3	0.4
Other primary products & manufactured goods	84.0	90.2	-8.7	3.6	98.1	-1.3	-2.9

Note: Yearly changes in FY2015 are calculated as follows.

"All commodities":

Calculated by the FY2015 index and the FY2014 index of the 2010-base index.

Other than "All commodities":

Calculated by the FY2015 index (2015-base index) and the FY2014 index (2015-base linked index for Apr.-Dec. 2014; 2015-base index for Jan.-Mar. 2015).

Index by Stage of Demand and Use (Preliminary Figures for FY2016)

CY2015 = 100, %

	Weight	Index	Yearly change	FY2015
Domestic demand products	1,000.000	93.9	-4.4	-5.8
Domestic goods	744.660	96.8	-2.3	-3.3
Imports	255.340	85.5	-10.5	-13.3
Raw materials	100.163	83.6	-9.3	-27.5
Domestic goods	26.060	101.5	2.1	-5.5
Imports	74.103	77.3	-13.8	-33.0
Intermediate materials	535.481	93.9	-4.5	-4.9
Domestic goods	448.097	95.2	-3.4	-4.8
Imports	87.384	87.1	-10.1	-5.0
Final goods	364.356	96.7	-2.9	-0.1
Domestic goods	270.503	98.9	-0.9	-0.8
Imports	93.853	90.4	-8.6	2.9
Capital goods	112.246	97.7	-2.0	0.5
Domestic goods	87.827	99.9	-0.1	0.2
Imports	24.419	89.8	-8.8	2.4
Consumer goods	252.110	96.3	-3.2	-0.3
Domestic goods	182.676	98.4	-1.3	-1.2
Imports	69.434	90.6	-8.5	3.0
Durable consumer goods	67.121	94.4	-5.2	0.3
Domestic goods	42.200	98.8	-1.3	-0.4
Imports	24.921	87.0	-11.9	2.6
Nondurable consumer goods	184.989	97.0	-2.5	-0.5
Domestic goods	140.476	98.3	-1.3	-1.5
Imports	44.513	92.6	-6.6	3.1

- Notes: 1. These indexes are compiled by reclassifying the "Producer Price Index excluding the consumption tax," "Export Price Index" and "Import Price Index" in terms of commodities' stage of demand or use of goods.
2. Yearly changes in FY2015 are calculated by the FY2015 index (2015-base index) and the FY2014 index (2015-base linked index for Apr.-Dec. 2014; 2015-base index for Jan.-Mar. 2015).

Producer Price Index
using Chain-weighted Index Formula
(Preliminary Figures for FY2016)

CY2015 = 100, %

	Weight	Index	Yearly change
All commodities	1,000.0	96.7	-2.4
excluding extra charges for summer electricity	1,000.0	96.6	-2.4
Beverages & foods	141.6	99.9	-0.3
Textile products	9.6	99.3	-0.7
Lumber & wood products	9.2	100.9	1.1
Pulp, paper & related products	27.7	99.2	-0.9
Chemicals & related products	89.2	92.6	-6.1
Petroleum & coal products	59.5	88.9	-5.6
Plastic products	38.2	96.2	-3.0
Ceramic, stone & clay products	23.3	99.5	-0.5
Iron & steel	51.7	95.0	-3.1
Nonferrous metals	27.1	88.8	-7.9
Metal products	40.0	99.7	-0.3
General purpose machinery	27.2	100.1	0.0
Production machinery	41.1	100.1	-0.1
Business oriented machinery	16.2	101.9	1.9
Electronic components & devices	24.5	96.7	-2.3
Electrical machinery & equipment	52.7	96.8	-3.0
Information & communications equipment	20.8	99.0	-1.1
Transportation equipment	140.7	99.0	-1.0
Other manufacturing industry products	48.0	100.0	0.0
Agriculture, forestry & fishery products	35.8	103.6	2.8
Minerals	3.9	92.8	-5.9
Electric power, gas & water	67.1	85.5	-11.5
Scrap & waste	4.9	101.4	8.9

Notes: 1.The index of "All commodities excluding extra charges for summer electricity" adjusts extra charges applied during summer season from July to September.
2.The indexes are based on the year 2015 weights.

(Special Table) Fiscal-year Index (All commodities)

CY2015 = 100, %

	Producer Price Index		Export Price Index				Import Price Index			
			Yen basis		Contract currency basis		Yen basis		Contract currency basis	
	Index	Yearly change	Index	Yearly change	Index	Yearly change	Index	Yearly change	Index	Yearly change
FY1987	101.8	-1.7	134.7	-4.4	120.0	4.4	80.3	-0.3	67.4	12.8
88	101.3	-0.5	134.4	-0.3	127.5	6.3	77.4	-3.6	69.9	3.8
89	103.9	2.6	141.7	5.4	126.3	-0.9	85.7	10.7	72.2	3.2
90	105.2	1.5	140.1	-0.5	123.0	-2.2	90.2	5.8	75.8	5.7
91	105.7	0.4	133.5	-4.8	123.1	0.1	80.5	-10.7	71.3	-6.0
92	104.6	-1.0	128.5	-3.7	123.3	0.1	77.2	-4.2	71.9	0.8
93	102.7	-1.8	118.1	-8.1	126.8	2.9	67.6	-12.4	71.1	-1.0
94	101.4	-1.3	114.9	-2.7	130.0	2.5	66.6	-1.5	75.1	5.6
95	100.4	-0.8	115.3	0.5	132.8	2.4	66.6	-0.3	77.5	3.1
96	98.8	-1.5	119.5	3.6	124.2	-6.5	74.8	12.3	77.3	-0.3
97	99.8	1.0	121.4	1.5	119.8	-3.5	76.5	2.4	74.5	-3.6
98	97.6	-2.2	120.2	-0.9	115.3	-3.8	71.5	-6.6	67.6	-9.2
99	96.8	-0.8	109.0	-9.4	115.3	0.0	67.8	-5.1	71.2	5.3
2000	96.4	-0.1	106.2	-2.6	114.9	-0.5	70.9	5.6	75.5	6.9
01	94.1	-2.4	109.0	2.7	108.6	-5.4	71.6	1.0	69.4	-8.1
02	92.5	-1.6	105.7	-3.1	105.7	-2.7	71.0	-0.8	69.6	0.2
03	92.0	-0.5	102.0	-3.5	105.0	-0.7	69.8	-1.8	71.8	3.3
04	93.4	1.5	101.8	-0.2	107.6	2.4	74.4	6.6	79.3	10.4
05	95.1	2.1	104.4	3.0	106.9	-0.2	86.6	17.3	88.7	12.7
06	97.0	2.0	107.7	3.2	107.3	0.3	95.9	10.7	95.5	7.7
07	99.3	2.3	107.5	-0.2	107.5	0.2	103.5	8.0	104.9	9.8
08	102.4	3.1	99.5	-7.4	108.9	1.3	103.9	0.4	115.5	10.2
09	97.1	-5.2	91.9	-7.7	106.3	-2.4	84.1	-19.1	100.2	-13.3
10	97.6	0.7	88.9	-3.2	109.0	2.9	89.1	6.8	113.5	14.4
11	98.9	1.4	86.9	-2.3	111.4	2.2	95.4	7.0	128.8	13.5
12	97.9	-1.1	87.7	0.9	109.5	-1.7	97.0	1.7	126.3	-1.9
13	99.7	1.9	96.7	10.3	107.3	-2.1	110.1	13.5	124.6	-1.4
14	102.4	2.7	99.5	2.9	104.6	-2.5	110.3	0.2	117.3	-5.8
15	99.1	-3.2	98.1	-1.5	98.6	-5.6	95.5	-13.7	95.9	-18.3
16	96.8	-2.3	91.2	-7.0	97.8	-0.8	85.5	-10.5	92.6	-3.4

Note: The figures before 2014 in "Index" are calculated by converting those in each base to the 2015 base. The figures in "Yearly change" are calculated from the original indexes. It should be noted that the "Yearly change" figures may not be equal to those calculated from the "Index" figures in the table.