



Bank of Japan

Research and Statistics Department

FOR RELEASE 8:50 A.M.
Tuesday, December 12, 2017

Monthly Report on the Corporate Goods Price Index (Preliminary Figures for November 2017)

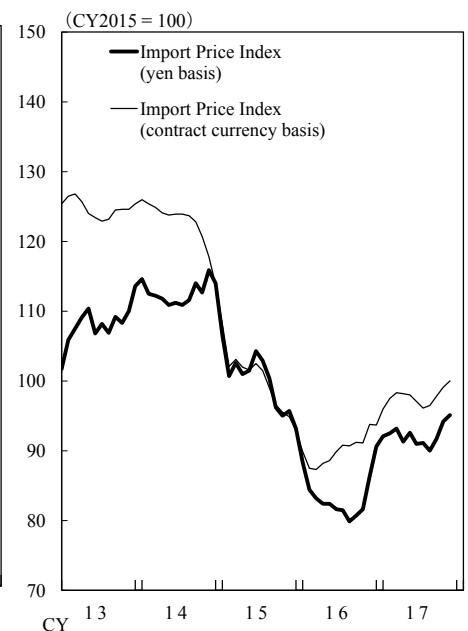
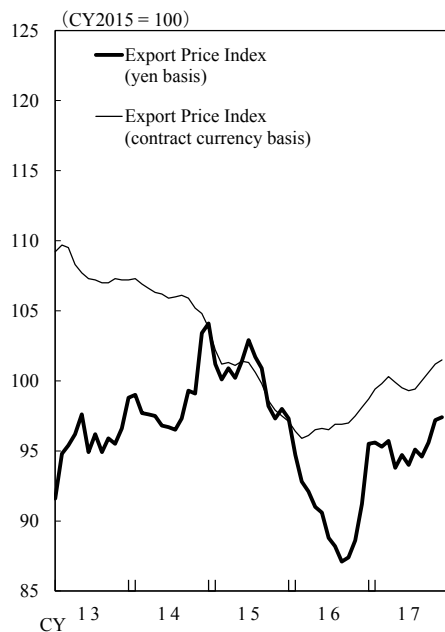
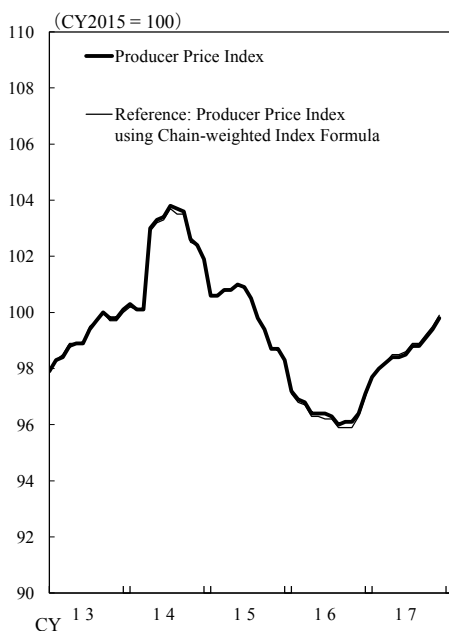
- ❖ The Producer Price Index rose 0.4 percent from the previous month.
- ❖ The Export Price Index (contract currency basis) rose 0.3 percent from the previous month.
- ❖ The Import Price Index (contract currency basis) rose 0.9 percent from the previous month.

CY2015 = 100, %

	Producer Price Index			Export Price Index				Import Price Index				Foreign exchange rate \$/yen Monthly change
	Monthly change	Yearly change	excluding extra charges for summer electricity	Yen basis		Contract currency basis		Yen basis		Contract currency basis		
				Monthly change	Yearly change	Monthly change	Yearly change	Monthly change	Yearly change	Monthly change	Yearly change	
2016/ Oct.	0.0	-2.6	0.3	1.4	-8.9	0.5	-0.4	1.1	-14.1	-0.1	-4.6	1.8
Nov.	0.3	-2.3	0.3	2.9	-6.9	0.6	0.6	5.8	-9.8	3.0	-1.2	4.2
Dec.	0.7	-1.2	0.7	4.7	-1.8	0.6	1.6	5.0	-2.8	-0.1	0.9	7.3
2017/ Jan.	0.6	0.5	0.6	0.1	1.0	0.7	3.1	1.7	4.3	2.5	6.8	-1.0
Feb.	0.3	1.1	0.3	-0.3	2.7	0.4	4.1	0.4	9.6	1.6	11.4	-1.4
Mar.	0.2	1.4	0.2	0.4	3.9	0.5	4.4	0.8	12.0	0.8	12.6	-0.1
Apr.	0.2	2.1	0.2	-2.0	3.1	-0.4	3.5	-2.0	10.8	-0.1	11.3	-2.6
May	0.0	2.1	0.0	1.0	4.5	-0.4	3.0	1.4	12.4	-0.2	10.6	1.9
June	0.1	2.2	0.1	-0.7	5.9	-0.2	2.9	-1.7	11.5	-0.9	8.0	-1.2
July	0.3	2.6	0.0	1.2	7.8	0.1	2.6	0.1	11.8	-1.0	5.8	1.4
Aug.	0.0	2.9	0.1	-0.5	8.6	0.6	3.2	-1.2	12.6	0.4	6.4	-2.2
Sep.	0.3	3.1	0.2	1.1	9.4	0.6	3.7	1.9	13.6	1.3	7.2	0.7
Oct.	0.3	3.4	0.6	1.7	9.7	0.6	3.8	r 2.7	r 15.4	r 1.3	r 8.8	2.0
Nov. Preliminary Figures	0.4	3.5	0.4	0.2	6.8	0.3	3.5	1.0	10.2	0.9	6.6	0.0
Index	99.8		99.8	97.4		101.5		95.1		100.0		113.0

Notes: 1. A negative change in the "Foreign exchange rate" indicates an appreciation of the yen.

2. r: revised figures



(Commodities contributing to the monthly changes in November 2017)

Producer Price Index		Monthly change 0.4 %
Groups	Contribution to change	Commodities
Petroleum & coal products	0.25 %	Gasoline, Gas oil, Kerosene
Agriculture, forestry & fishery products	0.09 %	Cooked & dried whitebait, Beef, Chicken eggs
Chemicals & related products	0.05 %	Xylene, Benzene, Styrene monomer
Scrap & waste	0.03 %	Iron & steel scrap
Nonferrous metals	0.02 %	Unwrought primary & secondary aluminum alloys, Rolled and drawn brass products, Rolled and drawn copper products
Electric power, gas & water	-0.02 %	Industrial extra high tension power, Commercial high tension power, Industrial high tension power

Export Price Index (contract currency basis)		Monthly change 0.3 %
Groups	Contribution to change	Commodities
Metals & related products	0.16 %	Iron & steel scrap, Unwrought copper, Hot rolled steel strips
General purpose, production & business oriented machinery	0.08 %	Semiconductor manufacturing equipment, Flat panel & display manufacturing equipment
Other primary products & manufactured goods	0.07 %	Jet fuel oil & kerosene, Gasoline, Wastepaper
Chemicals & related products	0.03 %	Caustic soda, Synthetic rubber, Polyamide resins
Electric & electronic products	-0.04 %	MOS integrated circuits (except MOS memory integrated circuits), Electrical measuring instruments & parts, Linear integrated circuits & hybrid integrated circuits
Transportation equipment	-0.03 %	Standard passenger cars (gasoline cars)

Import Price Index (contract currency basis)		Monthly change 0.9 %
Groups	Contribution to change	Commodities
Petroleum, coal & natural gas	0.87 %	Crude petroleum, Coal for coke making, Naphtha
Other primary products & manufactured goods	0.05 %	Bleached paper kraft pulp, Plastic films & sheets, Natural rubber
Electric & electronic products	0.03 %	Carrier transmission equipment, MOS memory integrated circuits, Silicon wafers
Metals & related products	0.02 %	Copper ores, Bolts, nuts & nails, Ferro-chromium
Lumber & wood products and forest products	0.02 %	North American logs, Plywood, North American timber
Beverages & foods and agriculture products for food	-0.05 %	Chicken, Wheat, Pork

Producer Price Index

(Preliminary Figures for November 2017)

CY2015 = 100, %

	Weight	Index		Monthly change		Yearly change	
			Previous month		Previous month		Previous month
All commodities	1,000.0	99.8	99.4	0.4	0.3	3.5	3.4
excluding extra charges for summer electricity	1,000.0	99.8	99.4	0.4	0.6	3.5	3.4
Beverages & foods	141.6	99.8	r 99.8	0.0	r 0.0	0.0	r -0.1
Textile products	9.6	100.3	r 100.5	-0.2	r 0.6	0.7	r 0.5
Lumber & wood products	9.2	104.0	103.8	0.2	0.5	3.2	3.1
Pulp, paper & related products	27.7	100.1	r 100.0	0.1	r -0.2	1.1	r 1.0
Chemicals & related products	89.2	95.8	r 95.3	0.5	r 1.1	4.1	r 3.8
Petroleum & coal products	59.5	105.0	r 100.9	4.1	r 5.3	19.0	r 16.1
Plastic products	38.2	96.1	96.2	-0.1	0.0	0.2	0.3
Ceramic, stone & clay products	23.3	100.0	99.9	0.1	0.0	0.5	0.6
Iron & steel	51.7	104.6	r 104.5	0.1	r 0.3	9.5	r 10.0
Nonferrous metals	27.1	103.4	r 102.8	0.6	r 2.4	17.2	r 22.5
Metal products	40.0	102.0	102.0	0.0	0.4	2.2	2.2
General purpose machinery	27.2	100.5	r 100.5	0.0	r 0.3	0.3	r 0.4
Production machinery	41.1	100.0	r 100.0	0.0	r -0.1	-0.4	r -0.2
Business oriented machinery	16.2	101.9	r 101.7	0.2	r 0.5	-0.3	r -0.2
Electronic components & devices	24.5	98.4	r 98.5	-0.1	r 0.4	1.2	r 1.9
Electrical machinery & equipment	52.7	95.5	95.7	-0.2	0.0	-1.1	-1.1
Information & communications equipment	20.8	98.5	98.4	0.1	0.2	0.1	0.0
Transportation equipment	140.7	98.8	r 98.8	0.0	r 0.0	0.1	r 0.0
Other manufacturing industry products	48.0	100.1	100.3	-0.2	0.1	0.2	0.5
Agriculture, forestry & fishery products	35.8	112.1	r 109.6	2.3	r 1.5	5.9	r 5.5
Minerals	3.9	94.8	r 94.8	0.0	r 0.4	2.9	r 3.4
Electric power, gas & water	67.1	91.5	r 91.9	-0.4	r -3.8	10.2	r 11.1
Scrap & waste	4.9	133.5	127.1	5.0	-1.7	34.4	41.9

Notes: 1. The index of "All commodities excluding extra charges for summer electricity" adjusts extra charges applied during summer season from July to September.

2. r: revised figures

Export Price Index (Preliminary Figures for November 2017)

CY2015 = 100, %

	Weight	Index		Monthly change			Yearly change		
		Yen basis	Previous month	Yen basis	Previous month	Contract currency basis	Yen basis	Previous month	Contract currency basis
All commodities	1,000.0	97.4	97.2	0.2	1.7	0.3	6.8	9.7	3.5
Textiles	13.8	93.2	93.5	-0.3	1.4	-0.3	3.9	7.3	0.7
Chemicals & related products	98.4	102.9	r 102.7	0.2	r 4.9	0.2	13.1	r 18.9	9.6
Metals & related products	108.5	110.3	108.8	1.4	2.5	1.3	20.4	25.8	16.3
General purpose, production & business oriented machinery	189.4	98.7	r 98.3	0.4	r 0.9	0.4	4.3	r 4.8	1.5
Electric & electronic products	205.5	93.3	93.5	-0.2	1.4	-0.2	4.2	8.0	0.9
Transportation equipment	285.2	95.2	r 95.4	-0.2	r 0.7	-0.1	2.9	r 5.5	-0.9
Other primary products & manufactured goods	99.2	91.2	r 90.5	0.8	r 2.0	0.8	7.9	r 10.5	4.6

Note: r: revised figures

Import Price Index (Preliminary Figures for November 2017)

CY2015 = 100, %

	Weight	Index		Monthly change			Yearly change		
		Yen basis	Previous month	Yen basis	Previous month	Contract currency basis	Yen basis	Previous month	Contract currency basis
All commodities	1,000.0	95.1	r 94.2	1.0	r 2.7	0.9	10.2	r 15.4	6.6
Beverages & foods and agriculture products for food	80.4	94.0	94.6	-0.6	1.9	-0.6	5.9	9.6	1.8
Textiles	61.3	95.3	r 95.1	0.2	r -0.2	0.2	0.7	r 1.9	-1.0
Metals & related products	95.8	103.7	r 103.5	0.2	r 3.1	0.2	25.5	r 30.5	21.0
Lumber & wood products and forest products	17.3	98.4	r 97.5	0.9	r 2.2	1.0	11.8	r 14.6	5.7
Petroleum, coal & natural gas	252.3	96.6	r 93.3	3.5	r 5.9	3.5	19.9	r 35.8	14.9
Chemicals & related products	94.7	97.6	r 97.7	-0.1	r 2.6	-0.1	8.2	r 10.8	5.4
General purpose, production & business oriented machinery	68.1	95.0	r 95.0	0.0	r 0.6	0.0	6.5	r 9.1	3.1
Electric & electronic products	196.6	88.3	r 88.1	0.2	r 1.6	0.1	3.3	r 5.5	0.2
Transportation equipment	49.5	97.3	r 97.3	0.0	r 0.5	0.0	4.3	r 6.6	0.2
Other primary products & manufactured goods	84.0	93.4	r 92.9	0.5	r 1.6	0.7	4.1	r 6.5	0.6

Note: r: revised figures

Index by Stage of Demand and Use (Preliminary Figures for November 2017)

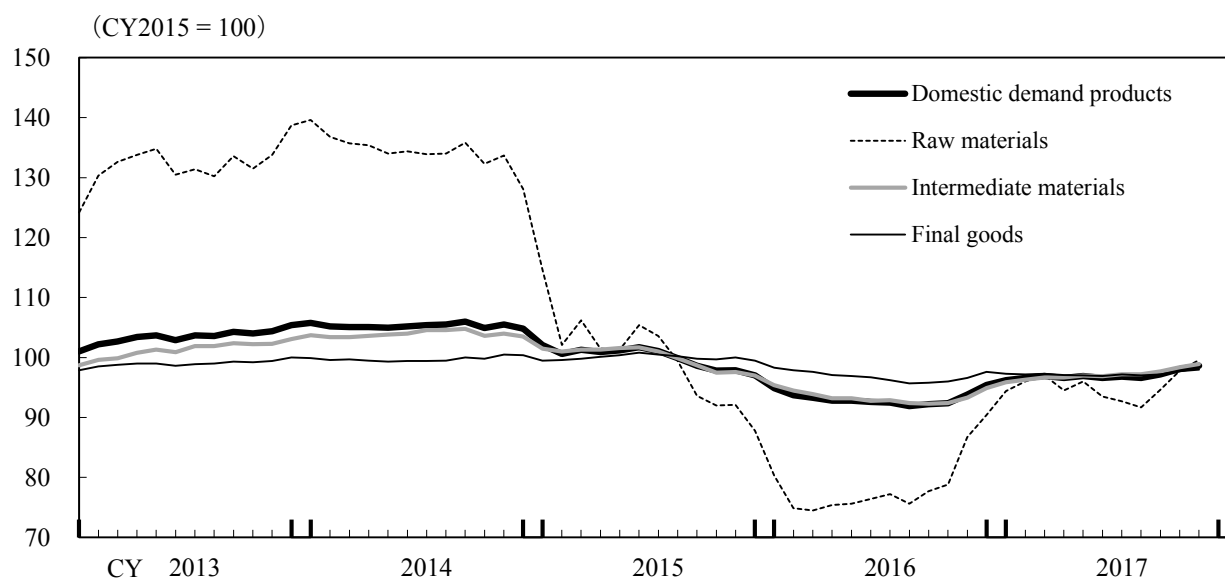
CY2015 = 100, %

	Weight	Index	Monthly change	Yearly change		
				Previous month	Previous month	
Domestic demand products	1,000.000	98.6	0.5	r 0.9	5.1	r 6.2
Domestic goods	744.660	99.8	0.4	0.3	3.5	3.4
Imports	255.340	95.1	1.0	r 2.7	10.2	r 15.4
Raw materials	100.163	99.6	1.8	r 3.4	14.9	r 24.1
Domestic goods	26.060	111.2	1.8	r 0.5	8.2	r 8.8
Imports	74.103	95.5	1.9	r 4.6	17.8	r 31.6
Intermediate materials	535.481	98.9	0.5	r 0.7	6.0	r 6.5
Domestic goods	448.097	99.0	0.3	r 0.3	4.8	r 4.9
Imports	87.384	98.0	0.9	r 3.2	12.5	r 16.1
Final goods	364.356	98.0	0.3	0.5	1.4	1.8
Domestic goods	270.503	100.0	0.4	0.3	1.0	0.8
Imports	93.853	92.2	0.2	r 0.8	2.9	r 4.8
Capital goods	112.246	98.3	0.1	0.3	0.8	1.2
Domestic goods	87.827	100.1	0.1	0.0	0.1	0.2
Imports	24.419	91.7	0.1	1.1	3.3	5.3
Consumer goods	252.110	97.9	0.5	r 0.5	1.9	r 1.9
Domestic goods	182.676	100.0	0.6	r 0.4	1.5	r 1.0
Imports	69.434	92.3	0.1	r 0.8	2.8	r 4.5
Durable consumer goods	67.121	93.7	-0.1	0.1	-0.2	0.4
Domestic goods	42.200	97.9	-0.1	r -0.1	-1.0	r -1.0
Imports	24.921	86.5	0.0	r 0.3	1.4	r 3.0
Nondurable consumer goods	184.989	99.4	0.6	0.7	2.5	2.6
Domestic goods	140.476	100.6	0.7	0.7	2.2	1.7
Imports	44.513	95.6	0.3	r 0.8	3.5	r 5.3

Notes: 1. These indexes are compiled by reclassifying the "Producer Price Index excluding the consumption tax," "Export Price Index" and "Import Price Index" in terms of commodities' stage of demand or use of goods.

2. r: revised figures

(Index by Stage of Demand and Use)



Producer Price Index
using Chain-weighted Index Formula
(Preliminary Figures for November 2017)

CY2015 = 100, %

	Weight	Index	Monthly change	Previous month		Yearly change	Previous month	
All commodities	1,000.0	99.9	0.4		0.3	3.7		3.8
excluding extra charges for summer electricity	1,000.0	99.9	0.4		0.6	3.7		3.8
Beverages & foods	141.6	99.7	0.0	r	0.0	-0.1	r	-0.1
Textile products	9.6	100.1	-0.2		0.5	0.6		0.4
Lumber & wood products	9.2	104.0	0.3		0.5	3.3		3.1
Pulp, paper & related products	27.7	100.0	0.0	r	-0.2	1.0	r	1.0
Chemicals & related products	89.2	96.1	0.6	r	1.1	4.7	r	4.3
Petroleum & coal products	59.5	105.4	3.9	r	5.5	19.5	r	16.7
Plastic products	38.2	96.0	0.0		0.0	0.3		0.2
Ceramic, stone & clay products	23.3	99.7	0.0		0.0	0.3		0.4
Iron & steel	51.7	104.7	0.2	r	0.2	9.9	r	10.2
Nonferrous metals	27.1	103.7	0.6	r	2.3	17.7	r	23.2
Metal products	40.0	101.8	0.0	r	0.5	2.2	r	2.1
General purpose machinery	27.2	100.4	0.0	r	0.3	0.2	r	0.3
Production machinery	41.1	99.9	0.1	r	-0.3	-0.4	r	-0.3
Business oriented machinery	16.2	101.7	0.2	r	0.4	-0.4	r	-0.3
Electronic components & devices	24.5	97.9	0.0	r	0.3	0.9	r	1.5
Electrical machinery & equipment	52.7	95.2	-0.2		0.0	-1.2		-1.2
Information & communications equipment	20.8	98.3	0.0		0.3	0.0		0.0
Transportation equipment	140.7	98.7	0.0	r	0.0	0.0	r	-0.1
Other manufacturing industry products	48.0	100.0	-0.1	r	0.0	0.2	r	0.4
Agriculture, forestry & fishery products	35.8	111.6	2.2	r	1.2	5.5	r	5.2
Minerals	3.9	94.9	0.0	r	0.5	3.5	r	3.9
Electric power, gas & water	67.1	91.6	-0.3	r	-3.7	10.9	r	11.8
Scrap & waste	4.9	136.3	4.7		-1.5	34.3		43.4

Notes: 1. The index of "All commodities excluding extra charges for summer electricity" adjusts extra charges applied during summer season from July to September.

2. The indexes are based on the year 2015 weights.

3. r: revised figures

Corporate Goods Price Index

Time Series Data

CY2015 = 100, %

	Producer Price Index							Export Price Index						
	All commodities				(Reference) excluding extra charges for summer electricity			All commodities (yen basis)				All commodities (contract currency basis)		
		Monthly (Quarterly) change	Yearly change	Change from three months earlier	Monthly (Quarterly) change	Change from three months earlier		Monthly (Quarterly) change	Yearly change	Change from three months earlier		Monthly (Quarterly) change	Yearly change	Change from three months earlier
CY 2015	100.0	—	—	—	—	—	100.0	—	—	—	100.0	—	—	—
2016	96.5	—	-3.5	—	—	—	90.7	—	-9.3	—	96.9	—	-3.1	—
FY 2015	99.1	—	—	—	—	—	98.1	—	—	—	98.6	—	—	—
2016	96.8	—	-2.3	—	—	—	91.3	—	-6.9	—	97.9	—	-0.7	—
2016/ Q4	96.5	0.4	-2.1	—	0.6	—	91.8	4.8	-5.8	—	98.1	1.2	0.6	—
2017/ Q1	98.0	1.6	1.0	—	1.6	—	95.5	4.0	2.5	—	99.8	1.7	3.9	—
Q2	98.4	0.4	2.1	—	0.4	—	94.2	-1.4	4.6	—	99.6	-0.2	3.2	—
Q3	98.9	0.5	2.9	—	0.2	—	95.1	1.0	8.6	—	100.0	0.4	3.2	—
2016/ Oct.	96.1	0.0	-2.6	-0.2	0.3	0.0	88.6	1.4	-8.9	0.5	97.5	0.5	-0.4	0.6
Nov.	96.4	0.3	-2.3	0.4	0.3	0.6	91.2	2.9	-6.9	4.7	98.1	0.6	0.6	1.2
Dec.	97.1	0.7	-1.2	1.0	0.7	1.4	95.5	4.7	-1.8	9.3	98.7	0.6	1.6	1.8
2017/ Jan.	97.7	0.6	0.5	1.7	0.6	1.7	95.6	0.1	1.0	7.9	99.4	0.7	3.1	1.9
Feb.	98.0	0.3	1.1	1.7	0.3	1.7	95.3	-0.3	2.7	4.5	99.8	0.4	4.1	1.7
Mar.	98.2	0.2	1.4	1.1	0.2	1.1	95.7	0.4	3.9	0.2	100.3	0.5	4.4	1.6
Apr.	98.4	0.2	2.1	0.7	0.2	0.7	93.8	-2.0	3.1	-1.9	99.9	-0.4	3.5	0.5
May	98.4	0.0	2.1	0.4	0.0	0.4	94.7	1.0	4.5	-0.6	99.5	-0.4	3.0	-0.3
June	98.5	0.1	2.2	0.3	0.1	0.3	94.0	-0.7	5.9	-1.8	99.3	-0.2	2.9	-1.0
July	98.8	0.3	2.6	0.4	0.0	0.1	95.1	1.2	7.8	1.4	99.4	0.1	2.6	-0.5
Aug.	98.8	0.0	2.9	0.4	0.1	0.2	94.6	-0.5	8.6	-0.1	100.0	0.6	3.2	0.5
Sep.	99.1	0.3	3.1	0.6	0.2	0.3	95.6	1.1	9.4	1.7	100.6	0.6	3.7	1.3
Oct.	99.4	0.3	3.4	0.6	0.6	0.9	97.2	1.7	9.7	2.2	101.2	0.6	3.8	1.8
Nov.	99.8	0.4	3.5	1.0	0.4	1.2	97.4	0.2	6.8	3.0	101.5	0.3	3.5	1.5

CY2015 = 100, %

	Import Price Index								Foreign exchange rate \$/yen
	All commodities (yen basis)				All commodities (contract currency basis)				
		Monthly (Quarterly) change	Yearly change	Change from three months earlier	Monthly (Quarterly) change	Yearly change	Change from three months earlier	Monthly (Quarterly) change	
CY 2015	100.0	—	—	—	100.0	—	—	—	14.4
2016	83.6	—	-16.4	—	90.2	—	-9.8	—	-10.1
FY 2015	95.5	—	—	—	95.9	—	—	—	9.3
2016	85.4	—	-10.6	—	92.5	—	-3.5	—	-9.8
2016/ Q4	86.2	6.8	-8.9	—	92.9	2.2	-1.6	—	6.7
2017/ Q1	92.6	7.4	8.6	—	97.3	4.7	10.3	—	4.0
Q2	91.6	-1.1	11.6	—	97.8	0.5	10.0	—	-2.2
Q3	90.9	-0.8	12.6	—	96.8	-1.0	6.5	—	-0.1
2016/ Oct.	81.6	1.1	-14.1	0.1	91.1	-0.1	-4.6	0.3	1.8
Nov.	86.3	5.8	-9.8	8.0	93.8	3.0	-1.2	3.4	4.2
Dec.	90.6	5.0	-2.8	12.3	93.7	-0.1	0.9	2.7	7.3
2017/ Jan.	92.1	1.7	4.3	12.9	96.0	2.5	6.8	5.4	-1.0
Feb.	92.5	0.4	9.6	7.2	97.5	1.6	11.4	3.9	-1.4
Mar.	93.2	0.8	12.0	2.9	98.3	0.8	12.6	4.9	-0.1
Apr.	91.3	-2.0	10.8	-0.9	98.2	-0.1	11.3	2.3	-2.6
May	92.6	1.4	12.4	0.1	98.0	-0.2	10.6	0.5	1.9
June	91.0	-1.7	11.5	-2.4	97.1	-0.9	8.0	-1.2	-1.2
July	91.1	0.1	11.8	-0.2	96.1	-1.0	5.8	-2.1	1.4
Aug.	90.0	-1.2	12.6	-2.8	96.5	0.4	6.4	-1.5	-2.2
Sep.	91.7	1.9	13.6	0.8	97.8	1.3	7.2	0.7	0.7
Oct.	94.2	2.7	15.4	3.4	99.1	1.3	8.8	3.1	2.0
Nov.	95.1	1.0	10.2	5.7	100.0	0.9	6.6	3.6	0.0

Note: A negative change in the "Foreign exchange rate" indicates an appreciation of the yen.

Index by Stage of Demand and Use Time Series Data

CY2015 = 100, %

		Domestic demand products								
					Raw materials			Intermediate materials		
			Monthly (Quarterly) change	Yearly change		Monthly (Quarterly) change	Yearly change		Monthly (Quarterly) change	Yearly change
CY	2015	100.0	—	—	100.0	—	—	100.0	—	—
	2016	93.2	—	-6.8	78.6	—	-21.4	93.4	—	-6.6
FY	2015	98.2	—	—	92.2	—	—	98.3	—	—
	2016	93.8	—	-4.5	83.4	—	-9.5	93.9	—	-4.5
	2016/ Q4	93.9	1.8	-3.8	85.3	11.1	-5.8	93.5	1.1	-4.0
	2017/ Q1	96.6	2.9	2.8	95.8	12.3	25.1	96.3	3.0	1.8
	Q2	96.7	0.1	4.3	94.7	-1.1	24.9	96.9	0.6	4.1
	Q3	96.9	0.2	5.1	93.0	-1.8	21.1	97.4	0.5	5.3
	2016/ Oct.	92.4	0.2	-5.5	78.8	1.4	-14.3	92.4	0.1	-5.2
	Nov.	93.8	1.5	-4.2	86.7	10.0	-5.9	93.3	1.0	-4.4
	Dec.	95.4	1.7	-1.6	90.4	4.3	3.0	94.9	1.7	-2.2
	2017/ Jan.	96.2	0.8	1.4	94.4	4.4	17.6	95.9	1.1	0.5
	Feb.	96.6	0.4	3.1	96.0	1.7	28.2	96.3	0.4	1.9
	Mar.	96.9	0.3	3.9	97.0	1.0	30.2	96.7	0.4	3.0
	Apr.	96.6	-0.3	4.1	94.5	-2.6	25.3	96.7	0.0	3.8
	May	96.9	0.3	4.4	96.0	1.6	27.0	97.0	0.3	4.1
	June	96.6	-0.3	4.3	93.5	-2.6	22.4	96.9	-0.1	4.4
	July	96.8	0.2	4.6	92.7	-0.9	20.1	97.2	0.3	4.6
	Aug.	96.6	-0.2	5.1	91.7	-1.1	21.3	97.2	0.0	5.2
	Sep.	97.2	0.6	5.4	94.6	3.2	21.8	97.7	0.5	5.9
	Oct.	98.1	0.9	6.2	97.8	3.4	24.1	98.4	0.7	6.5
	Nov.	98.6	0.5	5.1	99.6	1.8	14.9	98.9	0.5	6.0

CY2015 = 100, %

		Domestic demand products (Cont'd)								
		Final goods			Capital goods			Consumer goods		
			Monthly (Quarterly) change	Yearly change		Monthly (Quarterly) change	Yearly change		Monthly (Quarterly) change	Yearly change
CY	2015	100.0	—	—	100.0	—	—	100.0	—	—
	2016	96.9	—	-3.1	97.9	—	-2.1	96.4	—	-3.6
FY	2015	99.6	—	—	99.7	—	—	99.5	—	—
	2016	96.7	—	-2.9	97.6	—	-2.1	96.3	—	-3.2
	2016/ Q4	96.7	0.8	-3.0	97.6	0.5	-2.2	96.3	1.0	-3.4
	2017/ Q1	97.3	0.6	-0.6	97.8	0.2	-1.0	97.0	0.7	-0.6
	Q2	97.0	-0.3	0.1	97.5	-0.3	-0.5	96.8	-0.2	0.4
	Q3	97.1	0.1	1.3	98.0	0.5	0.9	96.8	0.0	1.6
	2016/ Oct.	96.0	0.2	-3.7	97.0	0.0	-2.6	95.6	0.3	-4.2
	Nov.	96.6	0.6	-3.4	97.5	0.5	-2.6	96.1	0.5	-3.8
	Dec.	97.6	1.0	-1.9	98.4	0.9	-1.2	97.3	1.2	-2.2
	2017/ Jan.	97.3	-0.3	-1.0	98.0	-0.4	-1.0	97.0	-0.3	-1.0
	Feb.	97.2	-0.1	-0.7	97.6	-0.4	-1.1	97.0	0.0	-0.5
	Mar.	97.3	0.1	-0.3	97.7	0.1	-0.9	97.1	0.1	-0.1
	Apr.	97.1	-0.2	0.0	97.6	-0.1	-0.7	96.9	-0.2	0.3
	May	97.0	-0.1	0.1	97.5	-0.1	-0.5	96.8	-0.1	0.4
	June	96.9	-0.1	0.2	97.4	-0.1	-0.3	96.7	-0.1	0.5
	July	97.2	0.3	1.0	98.0	0.6	0.5	96.9	0.2	1.4
	Aug.	97.0	-0.2	1.4	98.0	0.0	1.1	96.6	-0.3	1.6
	Sep.	97.2	0.2	1.5	97.9	-0.1	0.9	96.9	0.3	1.7
	Oct.	97.7	0.5	1.8	98.2	0.3	1.2	97.4	0.5	1.9
	Nov.	98.0	0.3	1.4	98.3	0.1	0.8	97.9	0.5	1.9

The next monthly report will be released on Tuesday, January 16, 2018.