

## Amounts Outstanding of Securitized Products

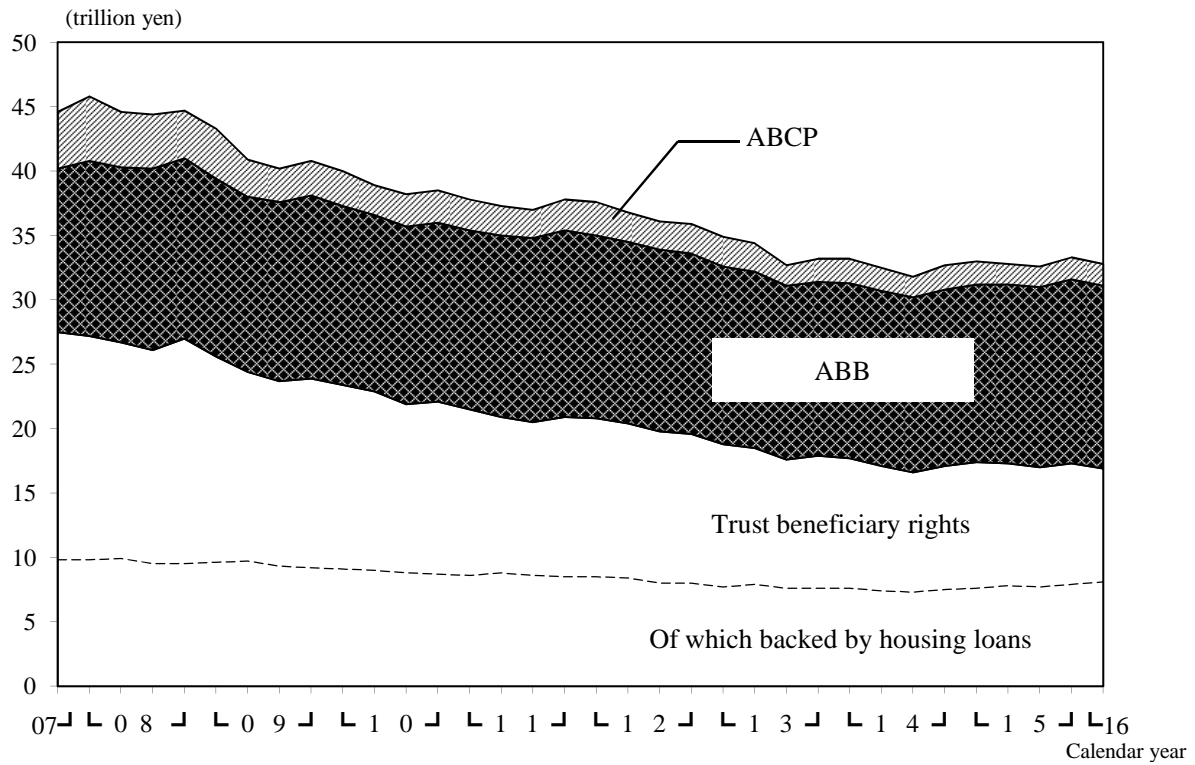
( trillion yen )

End of Month		Total amount										
		Asset-Backed Bonds (ABB)					ABCP	Trust beneficiary rights				
			MBS issued by JHFA	ABB backed by real estate properties	Other ABB			Of which backed by housing loans	Of which backed by loans to companies and governments	Of which backed by accounts receivable	Of which backed by lease and consumer credits	
2007	12	44.6	12.7	6.3	4.3	2.0	4.4	27.5	9.8	4.4	6.1	5.7
2008	3	45.8	13.6	6.8	4.6	2.1	5.0	27.2	9.8	4.5	6.0	5.4
	6	44.6	13.6	7.0	4.5	2.0	4.3	26.7	9.9	4.2	6.1	5.1
	9	44.3	14.1	7.4	4.6	2.1	4.2	26.1	9.5	3.8	6.1	5.3
	12	44.7	14.0	7.6	4.4	2.0	3.7	27.0	9.5	4.2	6.5	5.7
2009	3	43.2	13.8	7.6	4.2	2.0	3.9	25.6	9.6	3.7	5.2	5.8
	6	40.9	13.6	7.7	4.1	1.9	2.9	24.4	9.7	3.5	4.5	5.6
	9	40.2	13.9	8.1	4.0	1.8	2.6	23.7	9.3	3.4	4.4	5.6
	12	40.8	14.2	8.4	4.0	1.8	2.7	23.9	9.2	3.2	5.2	5.3
2010	3	40.0	13.9	8.4	3.9	1.6	2.7	23.4	9.1	3.3	5.0	5.1
	6	38.9	13.7	8.4	3.7	1.6	2.3	22.9	9.0	3.1	5.1	4.8
	9	38.2	13.8	8.6	3.6	1.6	2.5	21.9	8.8	2.8	5.1	4.5
	12	38.5	13.9	8.9	3.4	1.6	2.5	22.1	8.7	2.6	5.8	4.2
2011	3	37.8	13.9	9.0	3.3	1.6	2.4	21.5	8.6	2.7	5.4	4.1
	6	37.3	14.1	9.4	3.2	1.5	2.3	20.9	8.8	2.5	5.1	3.9
	9	37.0	14.3	9.7	3.1	1.5	2.2	20.5	8.6	2.4	5.2	3.7
	12	37.8	14.5	9.9	3.1	1.5	2.4	20.9	8.5	2.3	5.9	3.6
2012	3	37.6	14.2	10.1	2.7	1.4	2.6	20.8	8.5	2.3	5.8	3.5
	6	36.8	14.1	10.2	2.6	1.4	2.3	20.4	8.4	2.1	5.7	3.4
	9	36.1	14.1	10.4	2.4	1.4	2.2	19.8	8.0	2.1	5.3	3.4
	12	35.9	14.0	10.5	2.3	1.2	2.3	19.6	8.0	2.0	5.3	3.4
2013	3	34.9	13.8	10.6	2.1	1.2	2.3	18.8	7.7	1.9	5.1	3.2
	6	34.4	13.7	10.6	1.9	1.1	2.2	18.5	7.9	1.8	5.0	3.0
	9	32.7	13.5	10.8	1.6	1.1	1.6	17.6	7.6	1.8	4.4	3.0
	12	33.2	13.5	10.8	1.5	1.1	1.8	17.9	7.6	1.6	4.9	2.9
2014	3	33.2	13.6	10.9	1.5	1.2	1.9	17.7	7.6	1.6	4.4	3.0
	6	32.5	13.6	11.0	1.5	1.2	1.8	17.1	7.4	1.6	4.1	3.0
	9	31.8	13.6	11.0	1.4	1.2	1.6	16.6	7.3	1.5	3.9	3.0
	12	32.8	13.7	11.0	1.5	1.2	1.9	17.1	7.5	1.5	4.2	3.0
2015	3	33.0	13.8	11.0	1.5	1.3	1.8	17.4	7.6	1.7	3.6	3.3
	6	32.8	13.9	11.2	1.5	1.2	1.6	17.3	7.8	1.6	3.4	3.4
	9	32.6	14.0	11.2	1.6	1.2	1.6	17.0	7.7	1.6	3.1	3.5
	12	33.3	14.3	11.5	1.7	1.2	1.7	17.3	7.9	1.6	3.2	3.6
2016	3	32.9	14.2	11.5	1.7	1.1	1.7	16.9	8.1	1.6	2.7	3.7

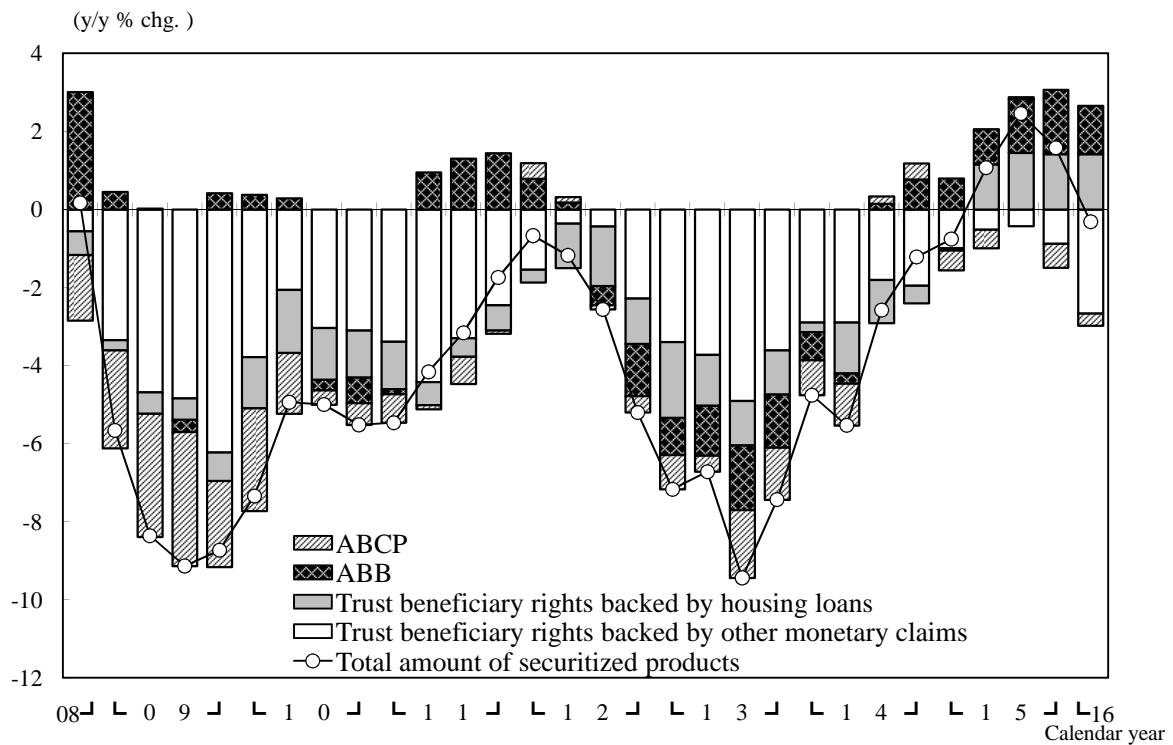
\* Figures are estimates. They may be retroactively revised due to changes of source data and in the estimation method.

## Chart 1 Securitized products

### ① Amounts outstanding

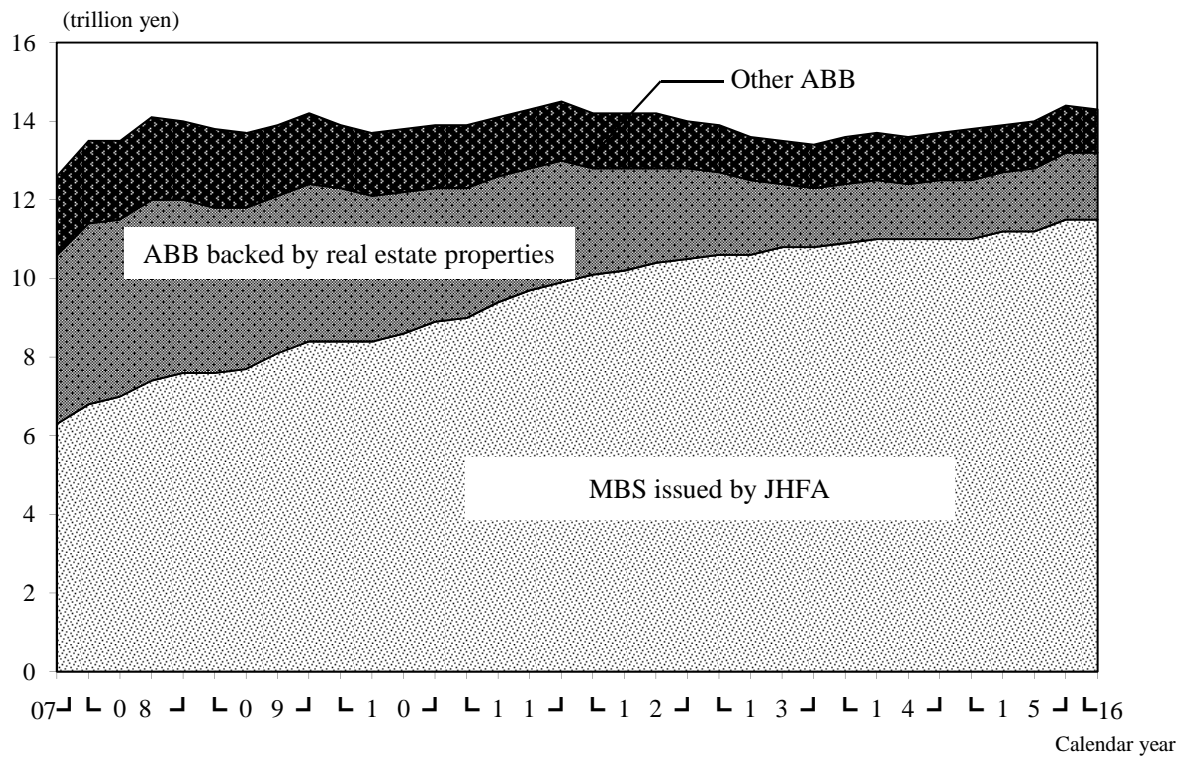


### ② Changes from a year earlier

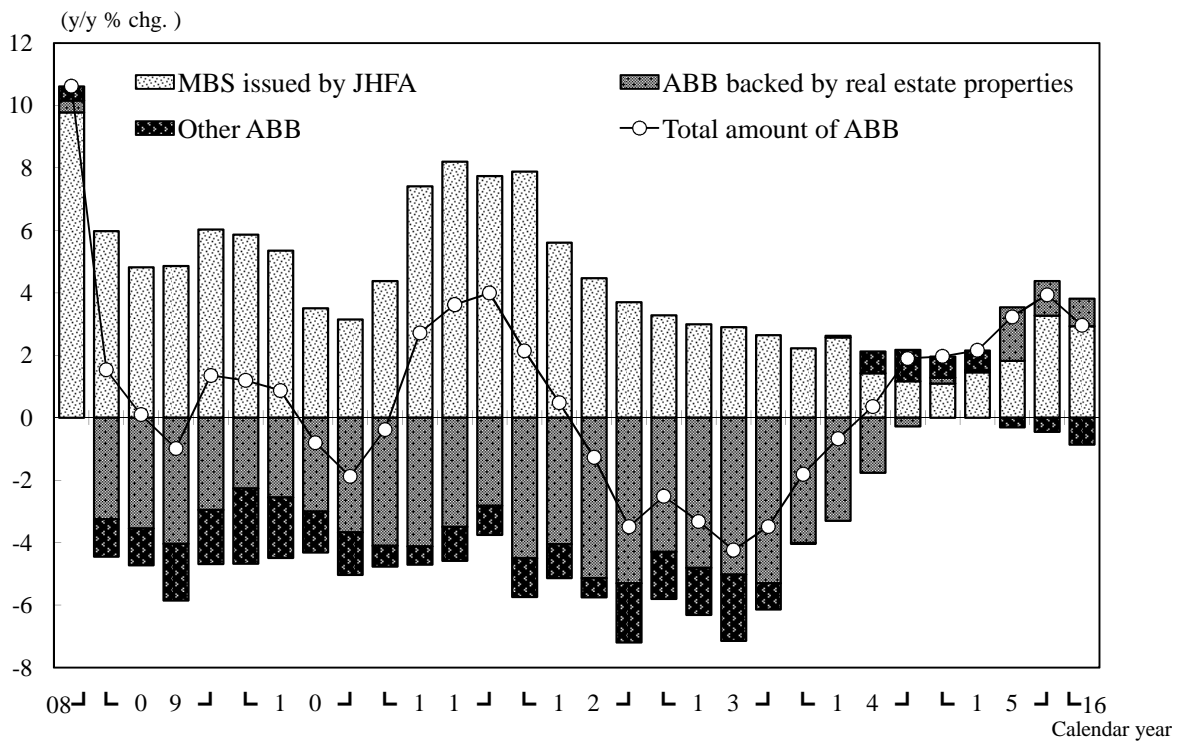


**Chart 2 Asset-backed bonds (ABB)**

**① Amounts outstanding**

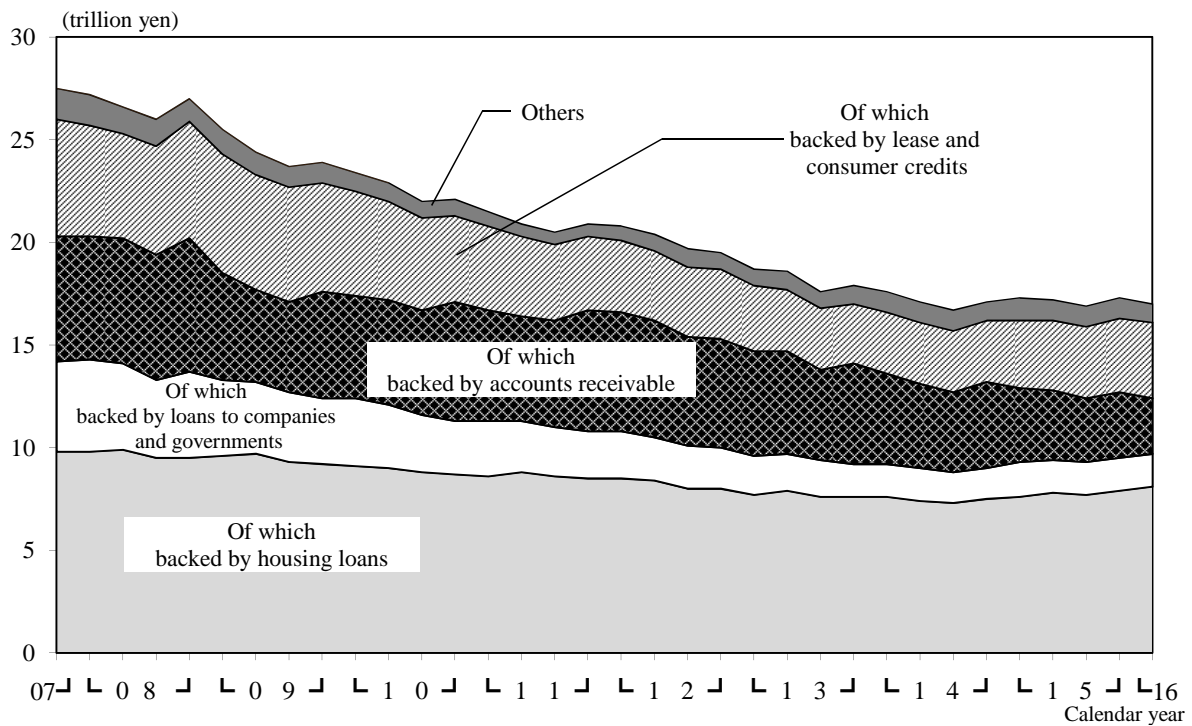


**② Changes from a year earlier**

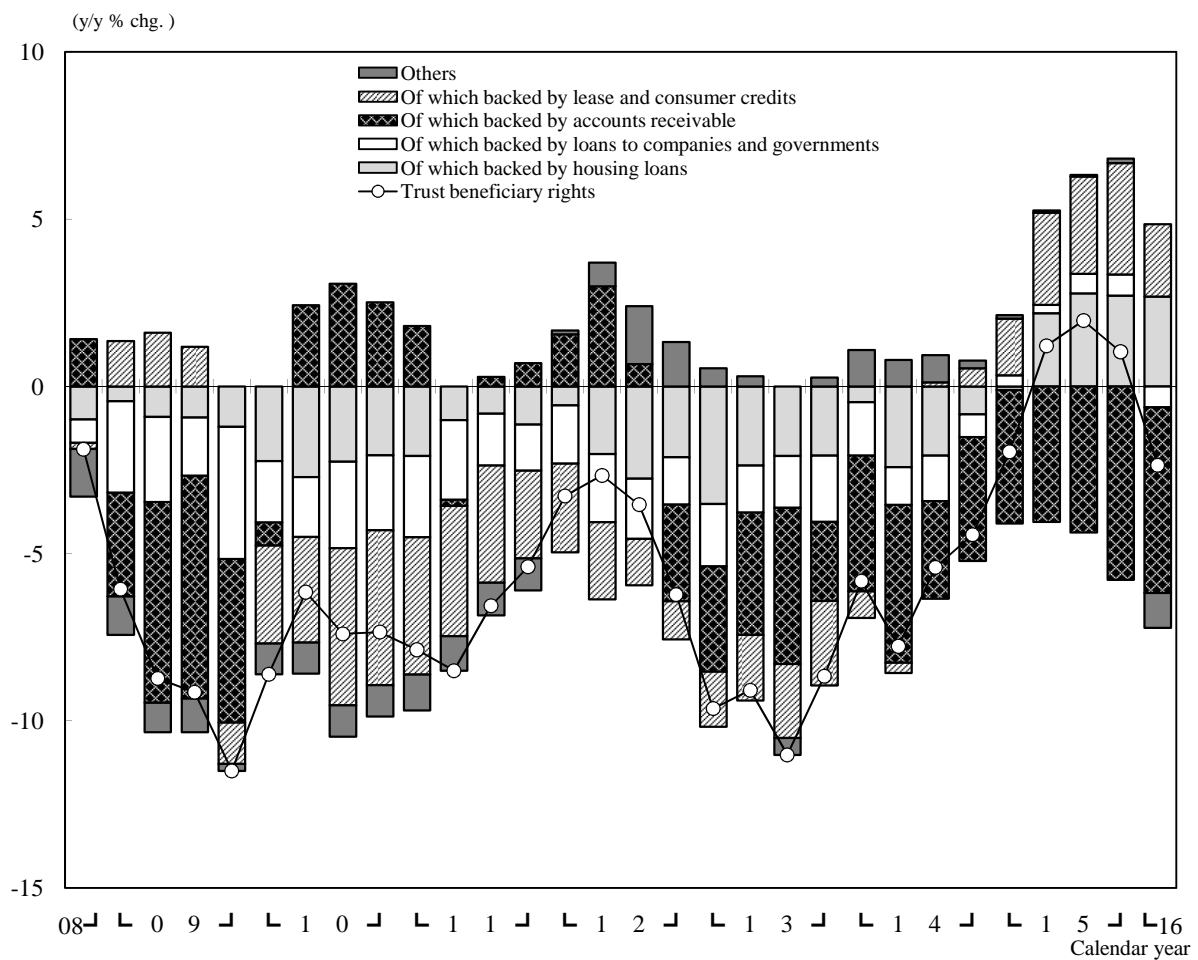


### Chart 3 Trust beneficiary rights

#### ① Amounts outstanding



#### ② Changes from a year earlier



### Note: Components of Securitized Products

Type of product		Definition
Asset-Backed Bonds (ABB)	MBS issued by JHFA	Mortgage-backed securities issued by <i>Japan Housing Finance Agency</i> (former <i>Government Housing Loan Corporation</i> )
	ABB backed by real estate properties	Privately placed ABB backed by real estate properties — Estimates based on information of each bond published by <i>Japan Securities Depository Center</i> .
	Other ABB	ABB other than those categorized above — This category includes: (a) publicly placed ABB (" <i>Issuing, redemption and outstanding amounts of bonds</i> " published by <i>Japan Securities dealers Association</i> ); (b) privately placed ABB backed by monetary claims (estimates based on information of each bond published by <i>Japan Securities Depository Center</i> ); and (c) Mortgage securities.
ABCP		Commercial papers issued by SPCs — Source data are taken from " <i>Outstanding amounts of CP by issuers' category</i> " published by <i>Japan Securities Depository Center</i> .
Trust beneficiary rights		Trust beneficiary rights backed by monetary claims — Source data are research results by <i>Bank of Japan</i> .
	Of which backed by housing loans	Trust beneficiary rights backed by housing loans — Source data are research results by <i>Bank of Japan</i> .
	Of which backed by loans to companies and governments	Trust beneficiary rights backed by loans to companies and governments — Source data are research results by <i>Bank of Japan</i> .
	Of which backed by accounts receivable	Trust beneficiary rights backed by accounts receivable — Source data are research results by <i>Bank of Japan</i> .
	Of which backed by lease and consumer credits	Trust beneficiary rights backed by lease and consumer credits — Source data are research results by <i>Bank of Japan</i> .