



# BANK of JAPAN

P.O. BOX 30  
TOKYO 103-8660, JAPAN  
TEL. 03-3279-1111

Research and Statistics Department

FOR RELEASE 8:50 A.M.  
Thursday, January 14, 2010

## Monthly Report on the Corporate Goods Price Index ( Preliminary Figures for December 2009 )

monthly change, %  
< >: change from 3 months earlier, %  
( ): yearly change, %

	Domestic Corporate Goods Price Index		Export Price Index		Import Price Index		Foreign exchange rate yen/\$
		excluding extra charges for summer electricity	Yen basis	Contract currency basis	Yen basis	Contract currency basis	
2007 CY	- < - > ( 1.8 )	- < - >	- ( 2.2 )	- ( 0.2 )	- ( 7.5 )	- ( 6.0 )	( -1.3 )
2008	- < - > ( 4.6 )	- < - >	- ( -6.1 )	- ( 2.0 )	- ( r 8.9 )	- ( r 20.3 )	( -12.2 )
2009	- < - > ( -5.3 )	- < - >	- ( -10.5 )	- ( -3.2 )	- ( -25.0 )	- ( -18.7 )	( -9.6 )
Index	103.0	103.0	88.6	98.3	100.0	113.2	93.57
2006 FY	- < - > ( 2.0 )	- < - >	- ( 3.2 )	- ( 0.3 )	- ( 10.7 )	- ( 7.7 )	( 3.3 )
2007	- < - > ( 2.3 )	- < - >	- ( -0.2 )	- ( 0.2 )	- ( 8.0 )	- ( r 9.8 )	( -2.3 )
2008	- < - > ( 3.2 )	- < - >	- ( -7.4 )	- ( 1.3 )	- ( r 0.9 )	- ( r 10.7 )	( -12.0 )
Index	108.3	108.2	96.1	101.0	r 126.0	r 134.1	100.54
2008/ Q3	3.1 < - > ( 7.3 )	2.8 < - >	2.6 ( -1.3 )	1.2 ( 4.2 )	8.1 ( r 23.2 )	5.8 ( r 32.3 )	3.0
Q4	-3.9 < - > ( 2.6 )	-3.7 < - >	-13.2 ( -12.0 )	-4.6 ( -0.1 )	r -24.6 ( r -9.7 )	r -17.7 ( r 2.7 )	-10.5
2009/ Q1	-3.2 < - > ( -1.8 )	-3.2 < - >	-3.3 ( -11.6 )	-1.3 ( -2.2 )	r -14.9 ( r -23.1 )	r -13.0 ( r -15.6 )	-2.8
Q2	-1.3 < - > ( -5.4 )	-1.3 < - >	3.4 ( -11.0 )	0.2 ( -4.6 )	r 2.4 ( r -29.0 )	r -0.7 ( r -24.8 )	4.0
Q3	0.0 < - > ( -8.3 )	-0.2 < - >	-1.5 ( -14.6 )	0.3 ( -5.4 )	r 1.9 ( -33.1 )	r 4.9 ( -25.4 )	-3.8
Q4	-0.8 < - > ( -5.3 )	-0.6 < - >	-2.2 ( -3.8 )	0.1 ( -0.7 )	-0.4 ( -11.5 )	3.0 ( -6.6 )	-4.2
Index	102.1	102.1	87.2	98.5	101.2	118.2	89.72
2008/ Nov.	-1.8 < -4.4 > ( 2.4 )	-1.8 < -4.2 >	-4.6 ( -11.4 )	-1.6 ( -0.3 )	r -12.4 ( r -8.8 )	r -9.9 ( r 2.3 )	-3.7
Dec.	-1.1 < -4.9 > ( 0.9 )	-1.1 < -4.7 >	-3.8 ( -15.1 )	-0.6 ( -0.8 )	r -12.1 ( r -22.9 )	r -8.7 ( r -9.5 )	-5.5
2009/ Jan.	-1.5 < -4.4 > ( -0.9 )	-1.5 < -4.4 >	-0.9 ( -13.7 )	0.0 ( -1.2 )	r -4.7 ( r -24.9 )	r -3.8 ( r -14.0 )	-1.2
Feb.	-0.5 < -3.1 > ( -1.9 )	-0.5 < -3.1 >	0.6 ( -13.7 )	-0.4 ( -2.2 )	r 1.8 ( r -24.7 )	r 0.4 ( r -15.2 )	2.2
Mar.	-0.3 < -2.3 > ( -2.6 )	-0.3 < -2.3 >	3.9 ( -7.5 )	-0.3 ( -3.2 )	3.5 ( r -19.8 )	r -0.9 ( r -17.5 )	6.0
Apr.	-0.6 < -1.3 > ( -4.1 )	-0.6 < -1.3 >	1.4 ( -8.3 )	0.5 ( -3.7 )	r 0.2 ( r -24.6 )	r -0.8 ( r -22.4 )	1.2
May	-0.5 < -1.3 > ( -5.6 )	-0.5 < -1.3 >	-1.6 ( -11.4 )	-0.2 ( -4.7 )	r -2.4 ( r -29.4 )	r -0.4 ( r -24.9 )	-2.9
June	-0.3 < -1.3 > ( -6.7 )	-0.3 < -1.3 >	1.0 ( -13.0 )	0.4 ( -5.3 )	r 2.8 ( r -32.5 )	r 2.4 ( r -26.9 )	0.3
July	0.4 < -0.4 > ( -8.5 )	0.1 < -0.7 >	-1.7 ( -15.5 )	-0.4 ( -6.8 )	r 1.2 ( r -33.4 )	r 3.1 ( r -26.7 )	-2.1
Aug.	0.0 < 0.1 > ( -8.5 )	0.1 < -0.1 >	1.2 ( -14.4 )	0.8 ( -5.1 )	0.4 ( r -34.5 )	r 0.0 ( r -26.9 )	0.4
Sep.	0.0 < 0.4 > ( -8.0 )	0.0 < 0.2 >	-2.3 ( -13.7 )	0.0 ( -4.2 )	r -1.7 ( r -31.1 )	r 1.1 ( r -22.5 )	-3.6
Oct.	-0.8 < -0.8 > ( -6.8 )	-0.6 < -0.5 >	-0.9 ( -7.7 )	-0.4 ( -2.2 )	r -0.8 ( r -23.1 )	r 0.0 ( r -17.0 )	-1.3
Nov.	r 0.0 < r -0.8 > ( r -5.0 )	r 0.0 < r -0.6 >	-0.3 ( -3.5 )	0.4 ( -0.2 )	r 0.6 ( r -11.6 )	r 1.7 ( r -6.3 )	-1.3
Dec. Preliminary Figures	0.1 < -0.7 > ( -3.9 )	0.1 < -0.5 >	-0.1 ( 0.1 )	-0.1 ( 0.3 )	3.0 ( 3.6 )	2.9 ( 5.6 )	0.4 ( -2.1 )
Index	102.2	102.2	87.0	98.6	103.4	121.1	89.57

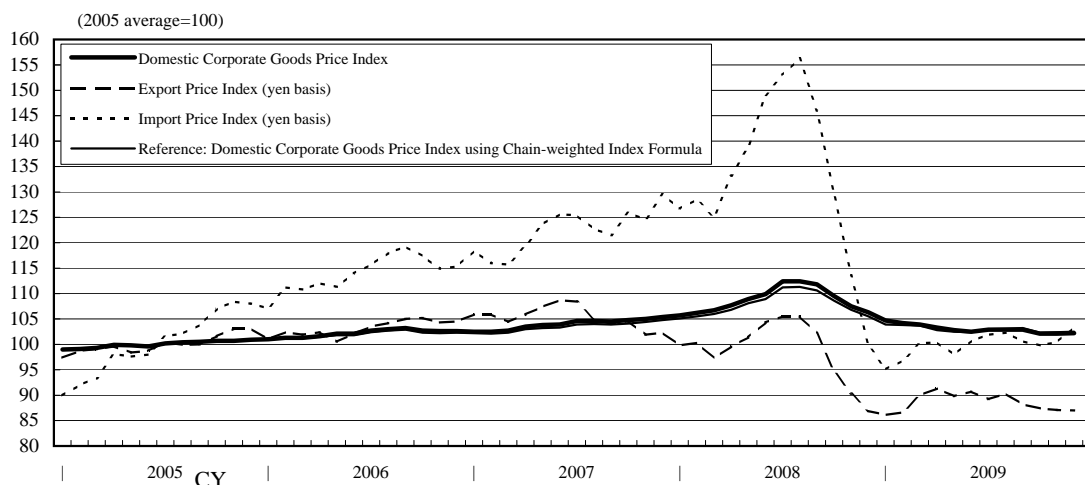
Notes : 1. "Q1" = January to March, "Q2" = April to June, "Q3" = July to September, and "Q4" = October to December.  
2. r: revised figures  
3. A negative change in the "Foreign exchange rate" indicates an appreciation of the yen.

The next monthly report will be released on Wednesday, February 10, 2010.

(Commodities contributing to the monthly changes in December 2009)

Domestic Corporate Goods Price Index		Monthly change 0.1 %
Groups	Contribution to change	Commodities
Agriculture, forestry & fishery products	0.07 %p	Pork, Beef, Chicken eggs, Chicken
Petroleum & coal products	0.05 %p	Liquefied petroleum gas, Jet fuel oil, Gas oil, Fuel oil A
Electric power, gas & water	0.04 %p	Gas for liberalized sectors, Extra high tension power
Nonferrous metals	0.03 %p	Unwrought copper, Plastic insulated copper wires
Chemicals & related products	0.02 %p	Benzene, Para-xylene
Iron & steel	-0.04 %p	Light steel bars, Hot-dip zinc-coated steel sheets, Shearing & slitting products (heavy & medium steel plates)
Processed foodstuffs	-0.03 %p	Wheat flour, Bread, Snacks, Candy
Electronic components & devices	-0.02 %p	Printed circuit boards
Transportation equipment	-0.01 %p	Chassis & body parts
Metal products	-0.01 %p	Aluminum window sash, Oil space heaters
Export Price Index (Contract currency basis)		Monthly change -0.1 %
Groups	Contribution to change	Commodities
Transportation equipment	-0.55 %p	Standard passenger cars, Small passenger cars
Electric & electronic products	-0.04 %p	Printed circuit boards
Chemicals & related products	0.25 %p	Para-xylene, Styrene monomer, Vinyl chloride monomer
Metals & related products	0.13 %p	Iron & steel scrap, Unwrought copper, Hot-dip zinc-coated steel sheets
General machinery & equipment	0.05 %p	Flat panel & display manufacturing equipment, Internal combustion engines for motor vehicles & parts thereof
Export Price Index (Yen basis)		Monthly change -0.1 %
Import Price Index (Contract currency basis)		Monthly change 2.9 %
Groups	Contribution to change	Commodities
Petroleum, coal & natural gas	2.27 %p	Crude petroleum, Liquefied petroleum gas, Liquefied natural gas, Naphtha
Metals & related products	0.32 %p	Copper ores, Unwrought aluminum, Unwrought silicon
Foodstuffs & feedstuffs	0.13 %p	Corn, Coffee beans, Prepared eel
Electric & electronic products	0.05 %p	MOS logic integrated circuits, Connecting components
Chemicals & related products	0.05 %p	Methanol, General purpose plastics
Import Price Index (Yen basis)		Monthly change 3.0 %

(Developments in All commodities Index)



Domestic Corporate Goods Price Index  
( Preliminary Figures for December 2009 )

CY2005 average = 100

	Weight	Index (preliminary figures)		Monthly change (preliminary figures)		Yearly change (preliminary figures)		Quarterly change (preliminary figures)
			Previous month		Previous month		Previous month	
All commodities	1,000.0	102.2	r 102.1	% 0.1	% r 0.0	% -3.9	% r -5.0	% -0.7
excluding extra charges for summer electricity	1,000.0	102.2	r 102.1	0.1	r 0.0	-3.9	r -5.0	-0.5
Manufacturing industry products	918.8	102.3	r 102.3	0.0	r -0.1	-3.7	r -4.9	-0.6
Processed foodstuffs	114.5	106.3	r 106.6	-0.3	r -0.2	-1.8	r -1.6	-0.4
Textile products	13.1	105.9	r 106.3	-0.4	r 0.1	-2.2	r -2.4	0.0
Lumber & wood products	10.2	103.6	103.9	-0.3	-0.2	-4.1	-4.5	-0.6
Pulp, paper & related products	28.5	111.7	r 111.8	-0.1	r -0.2	-3.6	r -3.3	-0.4
Chemicals & related products	85.2	102.2	r 102.0	0.2	r 0.5	-5.5	r -6.4	0.6
Plastic products	38.7	106.4	r 106.5	-0.1	r 0.2	-4.7	r -4.8	-0.2
Petroleum & coal products	53.8	110.8	109.9	0.8	0.6	0.5	-13.5	0.5
Ceramic, stone & clay products	25.9	110.7	110.5	0.2	0.0	1.7	1.7	0.1
Iron & steel	52.6	111.3	112.1	-0.7	-0.9	-19.2	-20.2	-4.1
Nonferrous metals	22.5	119.2	118.1	0.9	1.6	9.1	1.5	3.1
Metal products	37.6	106.1	r 106.4	-0.3	r 0.0	-3.2	r -3.6	-0.7
General machinery & equipment	108.4	99.8	r 99.7	0.1	r 0.0	-2.0	-2.4	0.1
Electrical machinery & equipment	53.3	92.9	r 92.7	0.2	r -0.1	-4.3	r -4.7	-0.5
Information & communications equipment	41.4	72.1	72.4	-0.4	-0.1	-7.0	-6.5	-0.8
Electronic components & devices	34.3	82.5	r 83.0	-0.6	r -1.0	-5.5	r -5.0	-2.1
Transportation equipment	124.8	103.4	r 103.5	-0.1	r -0.4	-1.3	r -0.8	-1.3
Precision instruments	10.6	99.0	99.3	-0.3	0.2	-0.4	-0.1	-0.1
Other manufacturing industry products	63.4	102.3	r 102.4	-0.1	r 0.1	-3.1	r -3.3	-0.8
Agriculture, forestry & fishery products	25.9	98.9	96.1	2.9	0.2	0.6	-1.0	2.6
Minerals	3.9	112.7	112.7	0.0	0.0	0.2	0.2	0.0
Electric power, gas & water	46.5	100.5	99.5	1.0	0.4	-11.3	-12.2	-3.3
Scrap & waste	4.9	111.8	r 112.1	-0.3	r 1.8	24.2	r 35.2	-10.2
<Reference>								
Electric & electronic products	129.0	83.4	r 83.6	-0.2	r -0.4	-5.4	r -5.3	-1.2

Notes: 1. r: revised figures

2. Quarterly changes are changes from 3 months earlier.

3. "Electrical & electronic products" is compiled by combining "Electrical machinery & equipment," "Information & communications equipment," and "Electronic components & devices."

Export Price Index  
( Preliminary Figures for December 2009 )

CY2005 average = 100

	Weight	Index (preliminary figures)		Monthly change (preliminary figures)			Yearly change (preliminary figures)			Quarterly change (preliminary figures)	
		Previous month		Yen basis	Previous month	Contract currency basis	Yen basis	Previous month	Contract currency basis	Yen basis	Contract currency basis
				%	%	%	%	%	%	%	%
All commodities	1,000.0	87.0	87.1	-0.1	-0.3	-0.1	0.1	-3.5	0.3	-1.4	-0.1
Textiles	14.7	94.9	94.2	0.7	-0.1	0.5	3.4	-3.1	5.2	1.2	3.1
Chemicals & related products	87.2	91.7	r 89.3	2.7	r 0.7	2.7	12.1	r 3.2	14.5	1.0	2.8
Metals & related products	88.5	102.8	r 101.3	1.5	r 1.1	1.2	-8.4	r -17.6	-7.2	0.8	2.8
General machinery & equipment	195.4	95.6	95.5	0.1	-0.6	0.2	2.5	0.4	2.2	-0.9	0.0
Electric & electronic products	294.4	70.3	r 70.4	-0.1	r -0.7	-0.3	-5.1	r -7.6	-4.4	-1.5	-0.4
Transportation equipment	223.7	89.6	91.9	-2.5	-0.6	-2.3	3.2	3.0	1.8	-4.1	-2.9
Precision instruments	18.5	87.8	87.9	-0.1	-1.0	0.0	1.5	-1.3	1.8	-1.9	-0.5
Other primary products & manufactured goods	77.6	96.2	r 95.9	0.3	r -0.2	0.4	0.7	r -4.6	1.1	-0.2	1.1

Notes : 1. r: revised figures

2. Quarterly changes are changes from 3 months earlier.

Import Price Index  
( Preliminary Figures for December 2009 )

CY2005 average = 100

	Weight	Index (preliminary figures)		Monthly change (preliminary figures)			Yearly change (preliminary figures)			Quarterly change (preliminary figures)	
		Previous month		Yen basis	Previous month	Contract currency basis	Yen basis	Previous month	Contract currency basis	Yen basis	Contract currency basis
				%	%	%	%	%	%	%	%
All commodities	1,000.0	103.4	r 100.4	3.0	r 0.6	2.9	3.6	r -11.6	5.6	2.8	4.7
Foodstuffs & feedstuffs	82.3	106.4	r 104.8	1.5	0.3	1.5	0.1	r -7.8	1.0	2.1	4.0
Textiles	60.5	99.4	r 98.9	0.5	r 0.3	0.5	0.1	r -2.8	1.4	0.8	2.1
Metals & related products	94.8	116.5	112.9	3.2	0.9	2.9	3.2	-9.7	6.0	3.9	6.0
Wood, lumber & related products	23.2	99.7	r 99.6	0.1	r -0.4	0.3	-2.2	-10.8	-3.1	0.2	1.6
Petroleum, coal & natural gas	275.5	124.7	r 116.3	7.2	r 2.1	6.8	13.5	r -19.6	16.4	6.9	9.1
Chemicals & related products	69.0	102.3	r 101.6	0.7	r 0.3	0.7	-1.5	r -9.5	-0.9	2.4	4.1
General machinery & equipment	51.8	103.0	102.9	0.1	-1.0	0.1	-2.1	-4.3	-2.0	-1.2	0.3
Electric & electronic products	205.4	73.9	r 73.5	0.5	r -0.5	0.4	-4.4	r -9.5	-2.8	-1.2	0.1
Transportation equipment	38.6	94.0	94.4	-0.4	-0.1	-0.2	0.6	-0.5	0.7	0.6	1.7
Precision instruments	21.9	93.0	93.1	-0.1	-1.1	-0.1	0.0	-3.0	-0.7	-1.3	0.1
Other primary products & manufactured goods	77.0	99.3	98.7	0.6	-0.4	0.5	1.7	-4.7	2.8	-0.3	1.5

Notes : 1. r: revised figures

2. Quarterly changes are changes from 3 months earlier.

Reference: Index by Stage of Demand and Use  
( Preliminary Figures for December 2009 )

CY2005 average = 100

	Weight	Index		Monthly change		Yearly change		Quarterly change
		(preliminary figures)	Previous month	(preliminary figures)	Previous month	(preliminary figures)	Previous month	(preliminary figures)
Domestic demand products	1,000.000	102.4	101.8	% 0.6	% r 0.1	% -2.6	% -6.3	% -0.1
Domestic goods	813.030	102.2	r 102.1	0.1	r 0.0	-3.9	r -5.0	-0.7
Imports	186.970	103.4	r 100.4	3.0	r 0.6	3.6	r -11.6	2.8
Raw materials	78.589	119.6	r 114.9	4.1	r 1.8	6.6	r -14.0	3.3
Domestic goods	21.900	104.6	104.1	0.5	0.5	5.4	6.7	-1.7
Imports	56.689	125.4	r 119.0	5.4	r 2.1	7.0	r -19.3	5.0
Intermediate materials	517.130	104.8	104.4	0.4	0.0	-4.8	-7.4	-0.5
Domestic goods	448.624	105.6	r 105.5	0.1	r -0.1	-6.0	r -7.6	-1.0
Imports	68.506	99.1	96.7	2.5	-0.1	4.3	-7.0	3.0
Final goods	404.281	96.1	96.0	0.1	-0.1	-1.1	-2.4	-0.2
Domestic goods	342.506	97.6	97.5	0.1	-0.1	-1.1	-1.9	-0.1
Imports	61.775	87.8	87.4	0.5	-0.5	-1.3	-6.0	-0.6
Capital goods	131.235	95.3	r 95.2	0.1	r 0.0	-1.8	r -2.5	0.0
Domestic goods	115.697	98.1	r 98.0	0.1	r 0.1	-1.5	r -1.7	0.2
Imports	15.538	74.3	74.6	-0.4	-0.8	-4.1	-8.9	-2.2
Consumer goods	273.046	96.5	96.4	0.1	-0.1	-0.8	-2.4	-0.2
Domestic goods	226.809	97.4	r 97.3	0.1	r -0.1	-0.8	r -1.9	-0.2
Imports	46.237	92.4	91.7	0.8	-0.3	-0.5	-5.2	0.0
Durable consumer goods	82.800	86.7	r 86.9	-0.2	r -0.1	-3.1	r -3.3	-0.9
Domestic goods	68.853	87.8	r 87.9	-0.1	r -0.1	-2.9	r -2.8	-0.8
Imports	13.947	81.3	r 81.8	-0.6	r -0.6	-4.0	r -6.5	-1.7
Non-durable consumer goods	190.246	100.8	100.5	0.3	-0.1	0.0	-2.1	0.0
Domestic goods	157.956	101.6	r 101.4	0.2	r -0.1	0.0	-1.6	0.0
Imports	32.290	97.2	96.0	1.3	-0.2	0.8	-4.7	0.6

Notes:

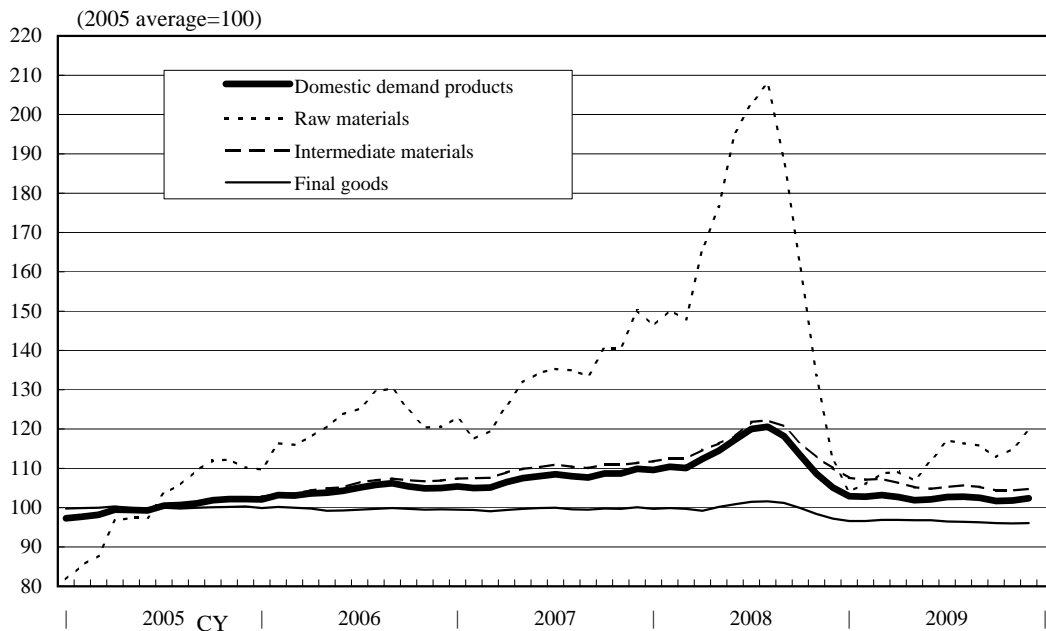
1. r: revised figures
2. Quarterly changes are changes from 3 months earlier.
3. These indexes are classified by stage of demand and use. Commodities of "Domestic Corporate Goods Price Index" and "Import Price Index" are classed as "Domestic demand products." Commodities used and consumed for production are defined as "Raw materials" (unprocessed materials) and "Intermediate materials" (processed materials), and those for final demand users as "Final goods." Indexes classified by stage of use are the subdivisions of those classified by stage of demand. Commodities of "Export Price Index" are classed as "Exports." Indexes for "Exports" are classified only by stage of use, but they are not included here.

(Commodities contributing to the monthly changes in December 2009)

Domestic demand products (yen basis)		Monthly change 0.6 %
Classification by stage of demand	Monthly change	Commodities contributing to the change
Raw materials <Weight: 78.589>	4.1 %	up: Crude petroleum (I), Liquefied natural gas (I), Copper ores (I), Pork, Corn (I), Natural rubber (I) down: Iron & steel scrap, Iron & steel scrap (I)
Intermediate materials <Weight: 517.130>	0.4 %	up: Naphtha (I), Liquefied petroleum gas (I), Unwrought aluminum (I), MOS logic integrated circuits (I) down: Printed circuit boards, Light steel bars, Chassis & body parts
Final goods <Weight: 404.281>	0.1 %	
Capital goods <Weight: 131.235>	0.1 %	up: Mold & die, Amusement machines down: Electronic computers (I)
Durable consumer goods <Weight: 82.800>	-0.2 %	up: Room air conditioners down: Cellular phones, Oil space heaters
Nondurable consumer goods <Weight: 190.246>	0.3 %	up: Liquefied petroleum gas (I), Beef, Chicken eggs, Pork down: Bread, Snacks, Candy

Note: (I) denotes commodities of "Import Price Index."  
Commodities without (I) are those of "Domestic Corporate Goods Price Index."

(Developments in Index by Domestic demand products)



**Reference: Domestic Corporate Goods Price Index  
using Chain-weighted Index Formula  
( Preliminary Figures for December 2009 )**

CY2005 average = 100

	Weight	Index (preliminary figures)		Monthly change (preliminary figures)		Yearly change (preliminary figures)		Quarterly change (preliminary figures)
			Previous month		Previous month		Previous month	
All commodities	1,000.0	102.5	102.4	% 0.1	% 0.1	% -2.8	% -4.1	% -0.7
excluding extra charges for summer electricity	1,000.0	102.6	r 102.4	0.2	r 0.0	-2.8	r -4.1	-0.4
Manufacturing industry products	918.6	102.4	r 102.3	0.1	r 0.0	-2.8	r -4.2	-0.4
Processed foodstuffs	110.5	106.1	r 106.4	-0.3	r -0.1	-1.7	r -1.4	-0.3
Textile products	11.9	105.7	r 106.1	-0.4	r 0.1	-2.1	r -2.2	0.1
Lumber & wood products	9.7	103.7	r 103.9	-0.2	r -0.3	-4.2	r -4.7	-0.5
Pulp, paper & related products	27.4	111.2	r 111.4	-0.2	r -0.2	-3.7	r -3.3	-0.5
Chemicals & related products	84.0	104.8	r 104.1	0.7	r 0.8	-2.2	r -3.7	1.0
Plastic products	37.9	105.7	r 105.8	-0.1	r 0.1	-4.3	r -4.3	-0.3
Petroleum & coal products	67.4	113.7	112.7	0.9	0.5	3.5	-11.5	0.3
Ceramic, stone & clay products	25.5	109.3	109.1	0.2	0.0	1.5	1.4	0.0
Iron & steel	59.2	111.5	112.3	-0.7	-0.9	-18.4	-19.4	-3.7
Nonferrous metals	30.2	126.5	125.0	1.2	1.7	15.4	7.0	3.3
Metal products	36.5	105.8	r 106.1	-0.3	r 0.0	-3.2	-3.5	-0.8
General machinery & equipment	109.8	99.2	99.0	0.2	-0.2	-2.1	-2.7	0.0
Electrical machinery & equipment	51.5	92.1	r 91.9	0.2	r -0.1	-4.5	r -4.9	-0.5
Information & communications equipment	42.1	67.4	r 67.7	-0.4	r -0.1	-9.9	r -9.0	-1.3
Electronic components & devices	30.0	79.0	r 79.6	-0.8	r -1.2	-6.7	r -6.4	-2.5
Transportation equipment	114.5	103.0	r 103.2	-0.2	r -0.3	-1.4	r -0.8	-1.3
Precision instruments	11.2	97.8	98.2	-0.4	0.2	-0.6	-0.2	-0.2
Other manufacturing industry products	59.3	101.6	r 101.6	0.0	r 0.1	-3.2	r -3.5	-0.8
Agriculture, forestry & fishery products	23.1	98.8	r 95.8	3.1	r 0.3	0.4	r -1.4	2.8
Minerals	3.3	111.5	111.5	0.0	0.0	0.1	0.1	0.0
Electric power, gas & water	46.9	101.1	100.1	1.0	0.4	-11.3	-12.2	-3.3
Scrap & waste	8.1	120.2	r 120.7	-0.4	r 2.1	37.5	r 49.9	-11.2
<Reference>								
Electric & electronic products	123.6	80.0	r 80.2	-0.2	r -0.5	-6.9	r -6.6	-1.4

Notes: 1. r: revised figures

2. Quarterly changes are changes from 3 months earlier.

3. "Domestic Corporate Goods Price Index using Chain-weighted index Formula" is classified in the same way as that of "Domestic Corporate Goods Price Index." Weights are updated annually and indexes are chained with the indexes of the previous year. The indexes are based on the year 2007 weights.

4. "Electrical & electronic products" is compiled by combining "Electrical machinery & equipment," "Information & communications equipment," and "Electronic components & devices."

## Appendix

### Domestic Corporate Goods Price Index ( Preliminary Figures for CY2009 )

CY2005 average = 100, figures in parentheses are yearly changes for CY2008

	Weight	Index	Yearly change	
			%	%
All commodities	1,000.0	103.0	-5.3	( 4.6 )
excluding extra charges for summer electricity	1,000.0	103.0	-5.2	( 4.6 )
Manufacturing industry products	918.8	102.8	-5.3	( 4.5 )
Processed foodstuffs	114.5	107.3	0.9	( 5.0 )
Textile products	13.1	106.1	-1.5	( 2.5 )
Lumber & wood products	10.2	104.5	-3.1	( -3.6 )
Pulp, paper & related products	28.5	113.4	2.3	( 6.9 )
Chemicals & related products	85.2	101.2	-9.3	( 4.6 )
Plastic products	38.7	107.6	-1.5	( 3.3 )
Petroleum & coal products	53.8	101.7	-33.9	( 22.8 )
Ceramic, stone & clay products	25.9	110.1	3.7	( 3.8 )
Iron & steel	52.6	120.5	-8.8	( 20.0 )
Nonferrous metals	22.5	109.8	-22.4	( -5.9 )
Metal products	37.6	107.8	-1.2	( 4.9 )
General machinery & equipment	108.4	100.5	-0.8	( 0.9 )
Electrical machinery & equipment	53.3	94.4	-2.8	( -1.0 )
Information & communications equipment	41.4	73.9	-6.6	( -6.3 )
Electronic components & devices	34.3	85.0	-4.0	( -2.7 )
Transportation equipment	124.8	104.7	3.1	( 1.7 )
Precision instruments	10.6	99.1	0.3	( 0.2 )
Other manufacturing industry products	63.4	103.0	-1.4	( 3.0 )
Agriculture, forestry & fishery products	25.9	96.1	-2.6	( 1.3 )
Minerals	3.9	112.7	2.7	( 4.5 )
Electric power, gas & water	46.5	109.8	-1.0	( 6.2 )
Scrap & waste	4.9	105.2	-46.7	( 20.0 )
<Reference>				
Electric & electronic products	129.0	85.3	-4.2	( -3.1 )

Note: "Electrical & electronic products" is compiled by combining "Electrical machinery & equipment," "Information & communications equipment," and "Electronic components & devices."

Export Price Index  
( Preliminary Figures for CY2009 )

CY2005 average = 100, figures in parentheses are yearly changes for CY2008

	Weight	Yen basis		Contract currency basis			
		Index	Yearly change	Index	Yearly change		
			%	%		%	%
All commodities	1,000.0	88.6	-10.5	( -6.1 )	98.3	-3.2	( 2.0 )
Textiles	14.7	94.0	-8.5	( -5.3 )	107.7	-0.6	( 4.9 )
Chemicals & related products	87.2	89.2	-20.2	( -4.4 )	100.8	-13.5	( 5.5 )
Metals & related products	88.5	102.7	-26.4	( 3.9 )	118.3	-19.5	( 15.8 )
General machinery & equipment	195.4	97.2	-2.5	( -4.7 )	105.4	4.5	( 1.6 )
Electric & electronic products	294.4	72.8	-10.8	( -12.5 )	79.6	-4.9	( -6.0 )
Transportation equipment	223.7	93.0	-4.0	( -7.7 )	103.3	5.7	( 0.4 )
Precision instruments	18.5	89.7	-5.4	( -7.1 )	99.2	2.0	( 0.5 )
Other primary products & manufactured goods	77.6	97.0	-10.8	( 0.5 )	108.7	-3.8	( 10.0 )

Import Price Index  
( Preliminary Figures for CY2009 )

CY2005 average = 100, figures in parentheses are yearly changes for CY2008

	Weight	Yen basis		Contract currency basis			
		Index	Yearly change	Index	Yearly change		
			%	%		%	%
All commodities	1,000.0	100.0	-25.0	( 8.9 )	113.2	-18.7	( 20.3 )
Foodstuffs & feedstuffs	82.3	106.4	-21.0	( 7.4 )	120.6	-13.4	( 18.8 )
Textiles	60.5	99.9	-3.8	( -2.7 )	106.9	0.8	( 3.1 )
Metals & related products	94.8	111.3	-31.5	( -0.9 )	129.0	-24.9	( 11.0 )
Wood, lumber & related products	23.2	99.9	-17.1	( -6.3 )	114.7	-8.4	( 4.7 )
Petroleum, coal & natural gas	275.5	111.6	-39.8	( 35.6 )	131.1	-33.2	( 52.4 )
Chemicals & related products	69.0	100.8	-17.6	( 4.3 )	110.0	-12.9	( 12.5 )
General machinery & equipment	51.8	106.6	-6.1	( -4.6 )	119.3	2.6	( 4.6 )
Electric & electronic products	205.4	76.1	-11.9	( -10.7 )	83.3	-6.6	( -4.2 )
Transportation equipment	38.6	94.4	-5.1	( -4.9 )	101.5	0.6	( 0.8 )
Precision instruments	21.9	94.9	-7.4	( -6.8 )	102.3	0.4	( 0.6 )
Other primary products & manufactured goods	77.0	100.2	-9.6	( -3.1 )	113.0	-1.8	( 7.3 )

Reference: Index by Stage of Demand and Use  
( Preliminary Figures for CY2009 )

CY2005 average = 100

	Weight	Index	Yearly change	Yearly change for
			%	CY 2008
Domestic demand products	1,000.000	102.5	-9.5	5.5
Domestic goods	813.030	103.0	-5.3	4.6
Imports	186.970	100.0	-25.0	8.9
Raw materials	78.589	112.0	-32.4	25.2
Domestic goods	21.900	102.5	-13.3	6.6
Imports	56.689	115.6	-37.2	31.0
Intermediate materials	517.130	105.7	-8.7	5.6
Domestic goods	448.624	107.1	-6.9	6.8
Imports	68.506	96.6	-20.6	-1.0
Final goods	404.281	96.5	-3.5	0.4
Domestic goods	342.506	97.8	-2.2	1.3
Imports	61.775	89.3	-10.3	-5.2
Capital goods	131.235	95.9	-2.1	-0.9
Domestic goods	115.697	98.5	-0.7	0.3
Imports	15.538	77.2	-12.8	-10.5
Consumer goods	273.046	96.8	-4.1	0.9
Domestic goods	226.809	97.5	-2.9	1.9
Imports	46.237	93.3	-9.8	-3.5
Durable consumer goods	82.800	88.1	-3.3	-3.2
Domestic goods	68.853	88.9	-2.1	-2.5
Imports	13.947	84.0	-8.9	-7.1
Non-durable consumer goods	190.246	100.6	-4.4	2.5
Domestic goods	157.956	101.2	-3.3	3.7
Imports	32.290	97.4	-10.0	-2.2

Note: These indexes are classified by stage of demand and use. Commodities of "Domestic Corporate Goods Price Index" and "Import Price Index" are classed as "Domestic demand products." Commodities used and consumed for production are defined as "Raw materials" (unprocessed materials) and "Intermediate materials" (processed materials), and those for final demand users as "Final goods." Indexes classified by stage of use are the subdivisions of those classified by stage of demand. Commodities of "Export Price Index" are classed as "Exports." Indexes for "exports" are classified only by stage of use, but they are not included here.

Reference: Domestic Corporate Goods Price Index  
using Chain-weighted Index Formula  
(Preliminary Figures for CY2009 )

CY2005 average = 100, figures in parentheses are yearly changes for CY2008

	Weight	Index	Yearly change	
			%	%
All commodities	1,000.0	103.0	-4.5	( 4.4 )
excluding extra charges for summer electricity	1,000.0	103.0	-4.5	( 4.4 )
Manufacturing industry products	918.6	102.6	-4.6	( 4.2 )
Processed foodstuffs	110.5	107.0	0.8	( 4.8 )
Textile products	11.9	105.8	-1.5	( 2.3 )
Lumber & wood products	9.7	104.5	-3.3	( -3.1 )
Pulp, paper & related products	27.4	113.0	2.3	( 6.7 )
Chemicals & related products	84.0	102.7	-7.1	( 3.9 )
Plastic products	37.9	107.0	-1.4	( 2.9 )
Petroleum & coal products	67.4	104.0	-32.1	( 22.4 )
Ceramic, stone & clay products	25.5	108.9	3.3	( 3.2 )
Iron & steel	59.2	119.7	-8.8	( 19.6 )
Nonferrous metals	30.2	114.3	-18.5	( -5.6 )
Metal products	36.5	107.5	-1.1	( 4.8 )
General machinery & equipment	109.8	100.0	-0.9	( 0.7 )
Electrical machinery & equipment	51.5	93.6	-3.0	( -1.1 )
Information & communications equipment	42.1	69.9	-9.0	( -7.5 )
Electronic components & devices	30.0	81.9	-5.3	( -3.7 )
Transportation equipment	114.5	104.4	3.0	( 1.7 )
Precision instruments	11.2	98.1	0.0	( 0.0 )
Other manufacturing industry products	59.3	102.6	-1.3	( 2.7 )
Agriculture, forestry & fishery products	23.1	96.0	-2.9	( 1.3 )
Minerals	3.3	111.5	2.3	( 4.1 )
Electric power, gas & water	46.9	110.4	-0.7	( 6.6 )
Scrap & waste	8.1	111.7	-42.8	( 19.5 )
<Reference>				
Electric & electronic products	123.6	82.3	-5.6	( -3.9 )

Notes: 1. "Domestic Corporate Goods Price Index using Chain-weighted index Formula" is classified in the same way as that of "Domestic Corporate Goods Price Index." Weights are updated annually and indexes are chained with the indexes of the previous year. The indexes are based on the year 2007 weights.

2. "Electrical & electronic products" is compiled by combining "Electrical machinery & equipment," "Information & communications equipment," and "Electronic components & devices."

## (Special Table) Calendar-year Index (All commodities)

CY2005 average=100, %

	DCGPI		EPI (Yen basis)		EPI (Contract currency basis)		IPI (Yen basis)		IPI (Contract currency basis)	
	Index	Percentage change	Index	Percentage change	Index	Percentage change	Index	Percentage change	Index	Percentage change
CY1980	116.0	15.0	166.9	8.6	103.8	5.3	174.4	44.8	93.9	38.6
81	117.7	1.4	169.1	1.2	107.9	4.1	177.3	1.6	98.8	5.2
82	118.2	0.5	175.5	3.9	104.2	-3.5	191.2	7.9	96.1	-2.7
83	117.5	-0.7	165.0	-6.0	100.9	-3.1	176.3	-7.8	91.5	-4.8
84	117.6	0.1	166.0	0.6	102.7	1.8	170.3	-3.4	89.3	-2.4
85	116.7	-0.8	163.6	-1.4	101.0	-1.7	166.2	-2.5	85.9	-3.8
86	111.2	-4.7	139.1	-15.1	105.4	4.3	106.6	-35.8	71.9	-16.4
87	107.7	-3.1	132.0	-5.1	109.8	4.1	97.8	-8.3	75.8	5.5
88	107.2	-0.4	129.0	-2.2	117.0	6.5	93.3	-4.6	80.2	5.8
89	109.2	1.8	134.8	4.4	118.1	1.1	100.5	7.7	83.2	3.8
90	110.8	1.5	137.5	2.1	114.4	-3.3	109.2	8.6	86.3	3.6
91	112.0	1.0	130.0	-5.4	114.4	0.0	100.2	-8.2	84.1	-2.5
92	111.0	-0.9	125.4	-3.6	114.4	0.0	94.1	-6.1	82.9	-1.5
93	109.3	-1.5	115.4	-8.0	116.3	1.7	84.3	-10.3	82.9	0.0
94	107.4	-1.7	112.3	-2.7	120.2	3.3	79.7	-5.6	84.2	1.7
95	106.6	-0.8	109.8	-2.2	123.3	2.7	79.6	-0.1	90.1	7.0
96	104.8	-1.6	115.1	4.8	117.3	-4.9	87.3	9.7	88.8	-1.4
97	105.4	0.6	117.1	1.8	112.0	-4.5	93.8	7.5	88.2	-0.6
98	103.9	-1.5	118.7	1.4	107.9	-3.6	89.2	-4.9	79.6	-9.8
99	102.4	-1.4	106.7	-10.2	106.3	-1.5	80.9	-9.3	79.9	0.3
2000	102.4	0.0	101.7	-4.6	107.3	0.9	84.7	4.7	87.9	10.0
01	100.0	-2.3	104.9	3.1	102.3	-4.7	86.9	2.5	82.2	-6.4
02	98.0	-2.0	103.7	-1.2	98.3	-3.9	85.6	-1.5	78.8	-4.2
03	97.1	-0.8	99.5	-4.0	97.3	-1.0	84.8	-0.9	82.0	4.0
04	98.4	1.3	98.1	-1.4	99.2	2.0	88.4	4.2	89.6	9.3
05	100.0	1.7	100.0	2.0	100.0	0.8	100.0	13.1	100.0	11.6
06	102.2	2.2	103.1	3.1	99.3	-0.7	113.9	13.9	109.2	9.2
07	104.0	1.8	105.4	2.2	99.5	0.2	122.4	7.5	115.7	6.0
08	108.8	4.6	99.0	-6.1	101.5	2.0	133.3	8.9	139.2	20.3
09	103.0	-5.3	88.6	-10.5	98.3	-3.2	100.0	-25.0	113.2	-18.7

Notes: 1. Calendar-year indexes of "All commodities" are calculated by converting those in each base to the 2005 base. The percentage changes from the previous calendar year are calculated by using calendar-year indexes in each base. For 1980CY, the percentage changes are calculated by using linked indexes. It should be noted that figures calculated by calendar-year indexes may not equal to the percentage changes shown in the above table.

2. DCGPI, EPI and IPI stand for "Domestic Corporate Goods Price Index," "Export Price Index," and "Import Price Index" respectively.