



# BANK of JAPAN

P.O. BOX 30  
TOKYO 103-8660, JAPAN  
TEL. 03-3279-1111

Research and Statistics Department

FOR RELEASE 8:50 A.M.  
Wednesday, February 10, 2010

## Monthly Report on the Corporate Goods Price Index ( Preliminary Figures for January 2010 )

monthly change, %  
< >: change from 3 months earlier, %  
( ): yearly change, %

	Domestic Corporate Goods Price Index		Export Price Index		Import Price Index		Foreign exchange rate yen/\$
		excluding extra charges for summer electricity	Yen basis	Contract currency basis	Yen basis	Contract currency basis	
2007 CY	- < - > ( 1.8 )	- < - >	- ( 2.2 )	- ( 0.2 )	- ( 7.5 )	- ( 6.0 )	( -1.3 )
2008	- < - > ( r 4.5 )	- < - >	- ( -6.1 )	- ( 2.0 )	- ( 8.9 )	- ( 20.3 )	( -12.2 )
2009	- < - > ( r -5.2 )	- < - >	- ( -10.5 )	- ( -3.2 )	- ( -25.0 )	- ( -18.7 )	( -9.6 )
Index	103.0	r 102.9	88.6	98.3	100.0	113.2	93.57
2006 FY	- < - > ( 2.0 )	- < - >	- ( 3.2 )	- ( 0.3 )	- ( 10.7 )	- ( 7.7 )	( 3.3 )
2007	- < - > ( 2.3 )	- < - >	- ( -0.2 )	- ( 0.2 )	- ( 8.0 )	- ( 9.8 )	( -2.3 )
2008	- < - > ( r 3.1 )	- < - >	- ( -7.4 )	- ( 1.3 )	- ( 0.9 )	- ( 10.7 )	( -12.0 )
Index	r 108.2	108.2	96.1	101.0	126.0	134.1	100.54
2008/ Q3	r 3.0 < - > ( 7.3 )	2.8 < - >	2.6 ( -1.3 )	1.2 ( 4.2 )	8.1 ( 23.2 )	5.8 ( 32.3 )	3.0
Q4	-3.9 < - > ( 2.6 )	r -3.8 < - >	-13.2 ( -12.0 )	-4.6 ( -0.1 )	-24.6 ( -9.7 )	-17.7 ( 2.7 )	-10.5
2009/ Q1	-3.2 < - > ( r -1.9 )	-3.2 < - >	-3.3 ( -11.6 )	-1.3 ( -2.2 )	-14.9 ( -23.1 )	-13.0 ( -15.6 )	-2.8
Q2	-1.3 < - > ( r -5.5 )	-1.3 < - >	3.4 ( -11.0 )	0.2 ( -4.6 )	2.4 ( -29.0 )	-0.7 ( -24.8 )	4.0
Q3	0.0 < - > ( -8.3 )	-0.2 < - >	-1.5 ( -14.6 )	0.3 ( -5.4 )	1.9 ( -33.1 )	4.9 ( -25.4 )	-3.8
Q4	r -0.7 < - > ( r -5.2 )	r -0.5 < - >	-2.2 ( -3.8 )	0.1 ( -0.7 )	-0.4 ( -11.5 )	3.0 ( -6.6 )	-4.2
Index	102.1	102.1	87.2	98.5	101.2	118.2	89.72
2008/ Dec.	r -1.2 < -4.9 > ( 0.9 )	r -1.2 < r -4.8 >	-3.8 ( -15.1 )	-0.6 ( -0.8 )	-12.1 ( -22.9 )	-8.7 ( -9.5 )	-5.5
2009/ Jan.	-1.5 < r -4.5 > ( -0.9 )	-1.5 < r -4.5 >	-0.9 ( -13.7 )	0.0 ( -1.2 )	-4.7 ( -24.9 )	-3.8 ( -14.0 )	-1.2
Feb.	-0.5 < r -3.2 > ( r -2.0 )	-0.5 < r -3.2 >	0.6 ( -13.7 )	-0.4 ( -2.2 )	1.8 ( -24.7 )	0.4 ( -15.2 )	2.2
Mar.	r -0.2 < r -2.2 > ( -2.6 )	r -0.2 < r -2.2 >	3.9 ( -7.5 )	-0.3 ( -3.2 )	3.5 ( -19.8 )	-0.9 ( -17.5 )	6.0
Apr.	r -0.7 < -1.3 > ( -4.1 )	r -0.7 < -1.3 >	1.4 ( -8.3 )	0.5 ( -3.7 )	0.2 ( -24.6 )	-0.8 ( -22.4 )	1.2
May	r -0.4 < r -1.2 > ( -5.6 )	r -0.4 < r -1.2 >	-1.6 ( -11.4 )	-0.2 ( -4.7 )	-2.4 ( -29.4 )	-0.4 ( -24.9 )	-2.9
June	r -0.4 < r -1.4 > ( r -6.8 )	r -0.4 < r -1.4 >	1.0 ( -13.0 )	0.4 ( -5.3 )	2.8 ( -32.5 )	2.4 ( -26.9 )	0.3
July	0.4 < -0.4 > ( -8.5 )	r 0.2 < r -0.6 >	-1.7 ( -15.5 )	-0.4 ( -6.8 )	1.2 ( -33.4 )	3.1 ( -26.7 )	-2.1
Aug.	0.0 < r 0.0 > ( -8.5 )	r 0.0 < r -0.2 >	1.2 ( -14.4 )	0.8 ( -5.1 )	0.4 ( -34.5 )	0.0 ( -26.9 )	0.4
Sep.	r 0.1 < r 0.5 > ( r -7.9 )	0.0 < 0.2 >	-2.3 ( -13.7 )	0.0 ( -4.2 )	-1.7 ( -31.1 )	1.1 ( -22.5 )	-3.6
Oct.	-0.8 < r -0.7 > ( -6.8 )	r -0.5 < -0.5 >	-0.9 ( -7.7 )	-0.4 ( -2.2 )	-0.8 ( -23.1 )	0.0 ( -17.0 )	-1.3
Nov.	0.0 < r -0.7 > ( -5.0 )	0.0 < r -0.5 >	-0.3 ( -3.5 )	0.4 ( -0.2 )	0.6 ( -11.6 )	1.7 ( -6.3 )	-1.3
Dec.	r 0.0 < r -0.8 > ( -3.9 )	r 0.0 < -0.5 >	-0.1 ( 0.1 )	-0.1 ( 0.3 )	3.0 ( 3.6 )	2.9 ( 5.6 )	0.4
2010/ Jan. Preliminary Figures	0.3 < 0.3 > ( -2.1 )	0.3 < 0.3 >	1.6 ( 2.7 )	0.7 ( 1.0 )	1.5 ( 10.4 )	0.2 ( 10.1 )	1.8 ( 0.9 )
Index	102.4	102.4	88.4	99.3	105.0	121.4	91.22

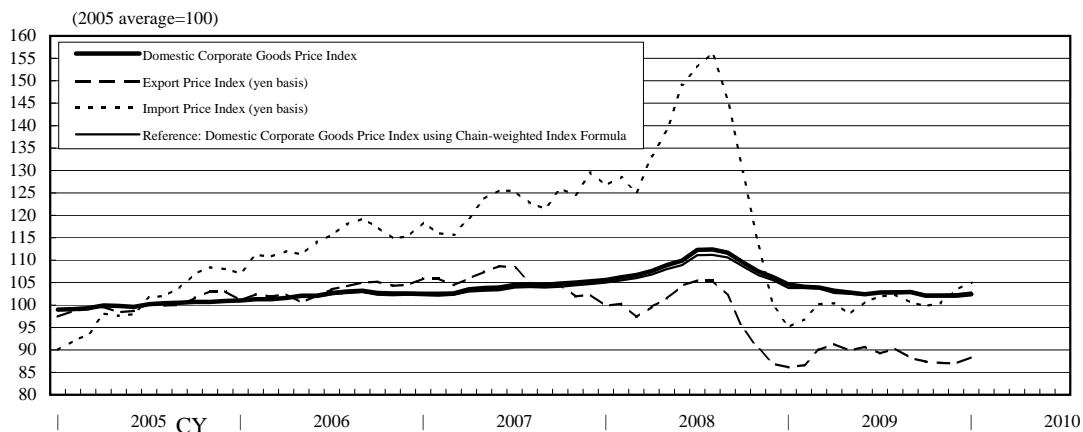
Notes : 1. "Q1" = January to March, "Q2" = April to June, "Q3" = July to September, and "Q4" = October to December.  
2. r: revised figures  
3. A negative change in the "Foreign exchange rate" indicates an appreciation of the yen.

The next monthly report will be released on Wednesday, March 10, 2010.

(Commodities contributing to the monthly changes in January 2010)

Domestic Corporate Goods Price Index		Monthly change 0.3 %
Groups	Contribution to change	Commodities
Petroleum & coal products	0.22 %p	Fuel oil C, Naphtha, Gasoline, Kerosene, Gas oil
Nonferrous metals	0.13 %p	Unwrought copper, Unwrought primary & secondary aluminum-base alloys, Plastic insulated copper wires
Chemicals & related products	0.09 %p	Ethylene, Propylene, Benzene, Synthetic rubber, Polypropylene resins
Scrap & waste	0.05 %p	Iron & steel scrap, Aluminum & aluminum-base alloy scrap
Electric power, gas & water	0.03 %p	Gas for liberalized sectors, Gas for non-liberalized sectors, Extra high tension power
Agriculture, forestry & fishery products	-0.10 %p	Chicken eggs, Pork, Beef
Information & communications equipment	-0.05 %p	Cellular phones, Computer printers
Iron & steel	-0.03 %p	Heavy & medium steel plates, High tensile strength steel
Transportation equipment	-0.02 %p	Drive, transmission & steering parts, Standard passenger cars
Export Price Index (Contract currency basis)		Monthly change 0.7 %
Groups	Contribution to change	Commodities
Metals & related products	0.33 %p	Iron & steel scrap, Unwrought copper, Hot rolled steel strips, Copper pipes & tubes
Chemicals & related products	0.19 %p	Styrene monomer, Vinyl chloride monomer, Ethylene & propylene, Para-xylene
Transportation equipment	0.15 %p	Standard passenger cars, Motor vehicle parts
General machinery & equipment	0.08 %p	Internal combustion engines for motor vehicles & parts thereof, Copying machines
Electric & electronic products	-0.06 %p	Integrated circuits, Connectors for electronic equipment
Export Price Index (Yen basis)		Monthly change 1.6 %
Import Price Index (Contract currency basis)		Monthly change 0.2 %
Groups	Contribution to change	Commodities
Metals & related products	0.41 %p	Copper ores, Unwrought platinum, Unwrought nickel, Unwrought silicon
Chemicals & related products	0.09 %p	General purpose plastics, Methanol
Other primary products & manufactured goods	0.09 %p	Natural rubber, Plastic films & sheets
Petroleum, coal & natural gas	-0.37 %p	Crude petroleum
Import Price Index (Yen basis)		Monthly change 1.5 %

(Developments in All commodities Index)



**Domestic Corporate Goods Price Index**  
( Preliminary Figures for January 2010 )

CY2005 average = 100

	Weight	Index (preliminary figures)		Monthly change (preliminary figures)		Yearly change (preliminary figures)		Quarterly change (preliminary figures)
			Previous month		Previous month		Previous month	
All commodities	1,000.0	102.4	r 102.1	% 0.3	r % 0.0	% -2.1	% -3.9	% 0.3
excluding extra charges for summer electricity	1,000.0	102.4	r 102.1	0.3	r 0.0	-2.1	-3.9	0.3
Manufacturing industry products	918.8	102.6	r 102.2	0.4	r -0.1	-1.3	-3.7	0.3
Processed foodstuffs	114.5	106.0	r 106.0	0.0	r -0.6	-2.2	r -2.1	-0.7
Textile products	13.1	105.0	r 105.8	-0.8	r -0.5	-1.2	r -2.3	-1.1
Lumber & wood products	10.2	103.5	103.6	-0.1	-0.3	-3.1	-4.1	-0.6
Pulp, paper & related products	28.5	111.5	r 111.6	-0.1	r -0.2	-3.9	r -3.7	-0.4
Chemicals & related products	85.2	103.3	102.2	1.1	0.2	0.8	-5.5	1.8
Plastic products	38.7	106.4	r 106.5	-0.1	r 0.0	-3.8	-4.7	0.1
Petroleum & coal products	53.8	114.9	110.8	3.7	0.8	24.2	0.5	5.2
Ceramic, stone & clay products	25.9	110.6	r 110.8	-0.2	r 0.3	1.6	r 1.8	0.1
Iron & steel	52.6	110.8	111.3	-0.4	-0.7	-17.3	-19.2	-2.0
Nonferrous metals	22.5	125.0	119.2	4.9	0.9	22.9	9.1	7.6
Metal products	37.6	106.1	r 106.0	0.1	r -0.4	-3.4	r -3.3	-0.3
General machinery & equipment	108.4	100.0	r 100.0	0.0	r 0.3	-1.5	r -1.8	0.3
Electrical machinery & equipment	53.3	92.6	r 92.7	-0.1	r 0.0	-4.3	r -4.5	-0.2
Information & communications equipment	41.4	70.7	r 72.0	-1.8	r -0.6	-8.2	r -7.1	-2.5
Electronic components & devices	34.3	80.9	r 81.0	-0.1	-0.6	-6.1	r -5.8	-1.7
Transportation equipment	124.8	103.3	103.4	-0.1	-0.1	-1.4	-1.3	-0.6
Precision instruments	10.6	99.0	99.0	0.0	-0.3	-0.5	-0.4	-0.1
Other manufacturing industry products	63.4	102.0	r 102.2	-0.2	r -0.2	-1.8	r -3.2	-0.3
Agriculture, forestry & fishery products	25.9	94.9	98.9	-4.0	2.9	0.2	0.6	-1.0
Minerals	3.9	113.9	r 112.3	1.4	r -0.4	1.2	r -0.2	1.1
Electric power, gas & water	46.5	101.1	100.5	0.6	1.0	-18.6	-11.3	2.0
Scrap & waste	4.9	121.6	111.8	8.8	-0.3	29.5	24.2	10.4
<Reference>								
Electric & electronic products	129.0	82.5	r 82.9	-0.5	r -0.4	-5.8	r -5.7	-1.2

Notes: 1. r: revised figures

2. Quarterly changes are changes from 3 months earlier.

3. "Electrical & electronic products" is compiled by combining "Electrical machinery & equipment," "Information & communications equipment," and "Electronic components & devices."

Export Price Index  
( Preliminary Figures for January 2010 )

CY2005 average = 100

	Weight	Index (preliminary figures)		Monthly change (preliminary figures)			Yearly change (preliminary figures)			Quarterly change (preliminary figures)	
		Previous month		Yen basis	Previous month	Contract currency basis	Yen basis	Previous month	Contract currency basis	Yen basis	Contract currency basis
				%	%	%	%	%	%	%	%
All commodities	1,000.0	88.4	87.0	1.6	-0.1	0.7	2.7	0.1	1.0	1.1	1.0
Textiles	14.7	96.1	r 94.1	2.1	r -0.1	0.7	7.9	r 2.5	7.0	1.9	1.4
Chemicals & related products	87.2	95.0	r 91.9	3.4	r 2.9	2.0	18.0	r 12.3	18.0	7.1	6.7
Metals & related products	88.5	107.6	102.8	4.7	1.5	3.0	0.6	-8.4	-0.5	7.4	6.4
General machinery & equipment	195.4	96.6	r 95.7	0.9	r 0.2	0.4	3.0	r 2.6	1.1	0.5	0.6
Electric & electronic products	294.4	70.7	70.3	0.6	-0.1	-0.3	-2.5	-5.1	-3.4	-0.3	-0.5
Transportation equipment	223.7	91.0	89.6	1.6	-2.5	0.7	3.3	3.2	-0.5	-1.6	-1.7
Precision instruments	18.5	88.6	87.8	0.9	-0.1	-0.1	2.9	1.5	1.3	-0.2	-0.4
Other primary products & manufactured goods	77.6	97.3	r 95.8	1.6	r -0.1	0.4	3.4	r 0.3	1.6	1.2	0.8

Notes : 1. r: revised figures

2. Quarterly changes are changes from 3 months earlier.

Import Price Index  
( Preliminary Figures for January 2010 )

CY2005 average = 100

	Weight	Index (preliminary figures)		Monthly change (preliminary figures)			Yearly change (preliminary figures)			Quarterly change (preliminary figures)	
		Previous month		Yen basis	Previous month	Contract currency basis	Yen basis	Previous month	Contract currency basis	Yen basis	Contract currency basis
				%	%	%	%	%	%	%	%
All commodities	1,000.0	105.0	103.4	1.5	3.0	0.2	10.4	3.6	10.1	5.2	4.9
Foodstuffs & feedstuffs	82.3	108.1	r 106.7	1.3	r 1.8	-0.1	5.6	r 0.4	3.9	3.4	3.1
Textiles	60.5	100.5	99.4	1.1	0.5	0.2	2.0	0.1	1.8	1.9	1.7
Metals & related products	94.8	122.9	r 116.6	5.4	r 3.3	3.7	9.8	r 3.3	9.9	9.8	9.0
Wood, lumber & related products	23.2	102.0	99.7	2.3	0.1	0.8	4.0	-2.2	0.3	2.0	1.5
Petroleum, coal & natural gas	275.5	125.6	124.7	0.7	7.2	-1.0	27.4	13.5	27.0	10.3	9.4
Chemicals & related products	69.0	104.7	r 102.4	2.2	r 0.8	1.4	7.4	r -1.4	6.9	3.4	3.3
General machinery & equipment	51.8	104.5	103.0	1.5	0.1	0.4	0.8	-2.1	-1.3	0.6	0.3
Electric & electronic products	205.4	74.4	r 73.8	0.8	r 0.4	0.0	-1.7	r -4.5	-1.7	0.7	0.2
Transportation equipment	38.6	94.3	94.0	0.3	-0.4	-0.1	2.1	0.6	1.0	-0.2	0.2
Precision instruments	21.9	93.7	r 92.8	1.0	r -0.3	-0.2	1.7	r -0.2	-1.0	-0.4	-0.8
Other primary products & manufactured goods	77.0	101.8	r 99.4	2.4	r 0.7	1.2	5.2	r 1.8	4.0	2.7	2.4

Notes : 1. r: revised figures

2. Quarterly changes are changes from 3 months earlier.

Reference: Index by Stage of Demand and Use  
( Preliminary Figures for January 2010 )

CY2005 average = 100

	Weight	Index		Monthly change		Yearly change		Quarterly change
		(preliminary figures)	Previous month	(preliminary figures)	Previous month	(preliminary figures)	Previous month	(preliminary figures)
				%	%	%	%	%
Domestic demand products	1,000.000	102.9	102.4	0.5	0.6	0.1	r -2.5	1.2
Domestic goods	813.030	102.4	r 102.1	0.3	r 0.0	-2.1	-3.9	0.3
Imports	186.970	105.0	103.4	1.5	3.0	10.4	3.6	5.2
Raw materials	78.589	120.8	119.6	1.0	4.1	16.0	6.6	7.0
Domestic goods	21.900	105.6	104.6	1.0	0.5	6.6	5.4	1.9
Imports	56.689	126.7	125.4	1.0	5.4	19.5	7.0	8.8
Intermediate materials	517.130	105.6	r 104.7	0.9	0.4	-1.9	-4.8	1.2
Domestic goods	448.624	106.1	r 105.5	0.6	r 0.0	-3.4	r -6.1	0.6
Imports	68.506	101.9	99.1	2.8	2.5	9.9	4.3	5.3
Final goods	404.281	96.0	96.1	-0.1	0.1	-0.6	-1.1	-0.1
Domestic goods	342.506	97.4	97.6	-0.2	0.1	-0.7	-1.1	-0.2
Imports	61.775	88.6	r 87.9	0.8	r 0.6	0.8	r -1.2	0.9
Capital goods	131.235	95.4	95.3	0.1	0.1	-1.2	-1.8	0.2
Domestic goods	115.697	98.2	r 98.2	0.0	r 0.2	-1.1	r -1.4	0.3
Imports	15.538	74.8	r 74.2	0.8	r -0.5	-2.5	r -4.3	-0.5
Consumer goods	273.046	96.3	96.5	-0.2	0.1	-0.3	-0.8	-0.2
Domestic goods	226.809	96.9	r 97.3	-0.4	r 0.0	-0.7	r -0.9	-0.5
Imports	46.237	93.3	r 92.5	0.9	r 0.9	1.9	r -0.4	1.4
Durable consumer goods	82.800	86.2	86.7	-0.6	-0.2	-3.4	-3.1	-0.9
Domestic goods	68.853	87.2	r 87.7	-0.6	r -0.2	-3.5	r -3.0	-0.9
Imports	13.947	81.2	r 81.4	-0.2	r -0.5	-2.9	r -3.9	-1.3
Non-durable consumer goods	190.246	100.7	r 100.7	0.0	r 0.2	0.9	r -0.1	0.1
Domestic goods	157.956	101.2	r 101.4	-0.2	r 0.0	0.5	r -0.2	-0.3
Imports	32.290	98.5	r 97.3	1.2	r 1.4	3.6	r 0.9	2.4

Notes:

1. r: revised figures
2. Quarterly changes are changes from 3 months earlier.
3. These indexes are classified by stage of demand and use. Commodities of "Domestic Corporate Goods Price Index" and "Import Price Index" are classed as "Domestic demand products." Commodities used and consumed for production are defined as "Raw materials" (unprocessed materials) and "Intermediate materials" (processed materials), and those for final demand users as "Final goods." Indexes classified by stage of use are the subdivisions of those classified by stage of demand. Commodities of "Export Price Index" are classed as "Exports." Indexes for "Exports" are classified only by stage of use, but they are not included here.

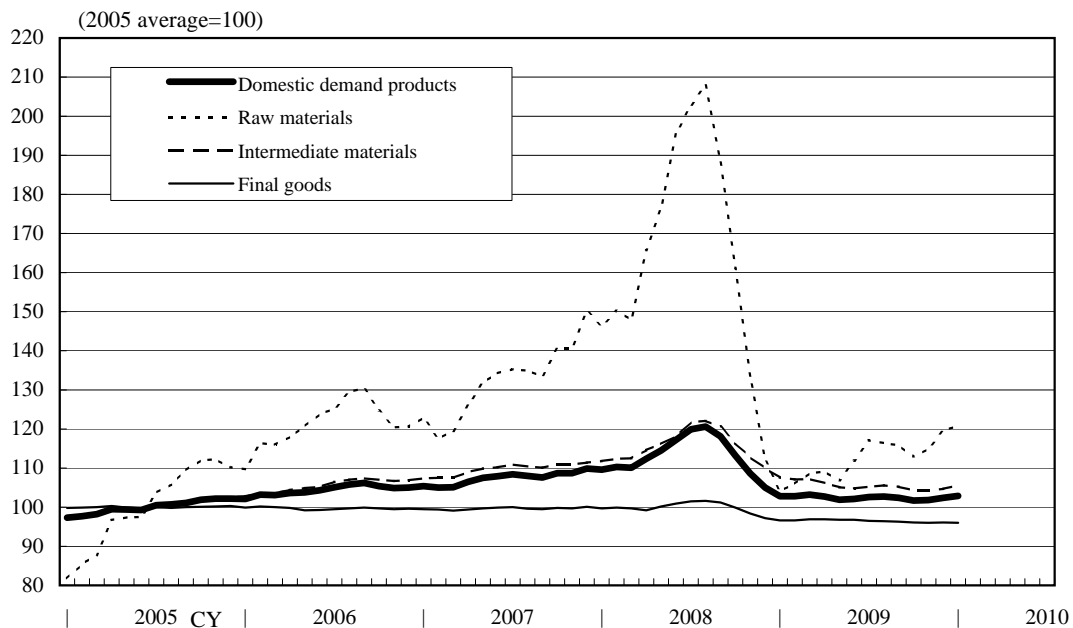
(Commodities contributing to the monthly changes in January 2010)

Domestic demand products (yen basis)		Monthly change 0.5 %
Classification by stage of demand	Monthly change	Commodities contributing to the change
Raw materials <Weight: 78.589>	1.0 %	up: Iron & steel scrap, Copper ores (I), Liquefied natural gas (I), Natural rubber (I) down: Crude petroleum (I), Chicken eggs
Intermediate materials <Weight: 517.130>	0.9 %	up: Fuel oil C, Naphtha, Unwrought copper, Naphtha (I), Fuel oil A, Ethylene down: Caustic soda, Drive, transmission & steering parts, Heavy & medium steel plates
Final goods <Weight: 404.281>	-0.1 %	
Capital goods <Weight: 131.235>	0.1 %	up: Power cables, Conveyors, Semiconductor manufacturing equipment down: Computer printers, Mold & die
Durable consumer goods <Weight: 82.800>	-0.6 %	up: Wood furniture (I) down: Cellular phones, Standard passenger cars (I), Standard passenger cars
Nondurable consumer goods <Weight: 190.246>	0.0 %	up: Gasoline, Kerosene, Liquefied petroleum gas (I) down: Chicken eggs, Beef, Pork, Dried bonito

Note: (I) denotes commodities of "Import Price Index."

Commodities without (I) are those of "Domestic Corporate Goods Price Index."

(Developments in Index by Domestic demand products)



**Reference: Domestic Corporate Goods Price Index**  
**using Chain-weighted Index Formula**  
(Preliminary Figures for January 2010)

CY2005 average = 100

	Weight	Index (preliminary figures)		Monthly change (preliminary figures)		Yearly change (preliminary figures)		Quarterly change (preliminary figures)
			Previous month		Previous month		Previous month	
All commodities	1,000.0	102.8	r 102.4	% 0.4	% 0.1	% -1.0	% r -2.9	% 0.5
excluding extra charges for summer electricity	1,000.0	102.8	r 102.5	0.3	r 0.1	-1.1	-2.8	0.5
Manufacturing industry products	918.6	102.6	r 102.3	0.3	r 0.0	-0.4	-2.8	0.3
Processed foodstuffs	110.5	105.8	r 105.8	0.0	r -0.6	-2.1	r -1.9	-0.7
Textile products	11.9	104.6	r 105.6	-0.9	r -0.5	-1.2	r -2.2	-1.3
Lumber & wood products	9.7	103.6	103.7	-0.1	-0.2	-3.1	-4.2	-0.6
Pulp, paper & related products	27.4	111.1	111.2	-0.1	-0.2	-3.8	-3.7	-0.4
Chemicals & related products	84.0	106.0	104.8	1.1	0.7	4.0	-2.2	2.6
Plastic products	37.9	105.8	r 105.8	0.0	r 0.0	-3.6	r -4.2	0.1
Petroleum & coal products	67.4	117.9	113.7	3.7	0.9	26.1	3.5	5.2
Ceramic, stone & clay products	25.5	109.2	r 109.4	-0.2	r 0.3	1.2	r 1.6	0.1
Iron & steel	59.2	111.1	111.5	-0.4	-0.7	-16.4	-18.4	-1.9
Nonferrous metals	30.2	132.5	126.5	4.7	1.2	29.8	15.4	7.8
Metal products	36.5	105.8	r 105.7	0.1	r -0.4	-3.3	r -3.3	-0.3
General machinery & equipment	109.8	99.5	r 99.4	0.1	r 0.4	-1.5	r -1.9	0.3
Electrical machinery & equipment	51.5	91.7	r 91.8	-0.1	r -0.1	-4.6	r -4.8	-0.3
Information & communications equipment	42.1	66.0	67.4	-2.1	-0.4	-10.8	-9.9	-2.7
Electronic components & devices	30.0	77.4	r 77.5	-0.1	-0.8	-7.2	r -7.1	-2.1
Transportation equipment	114.5	102.9	103.0	-0.1	-0.2	-1.5	-1.4	-0.6
Precision instruments	11.2	97.8	97.8	0.0	-0.4	-0.7	-0.6	-0.2
Other manufacturing industry products	59.3	101.2	r 101.4	-0.2	r -0.2	-2.4	r -3.4	-0.3
Agriculture, forestry & fishery products	23.1	94.8	98.8	-4.0	3.1	0.0	0.4	-0.7
Minerals	3.3	113.0	r 111.2	1.6	r -0.3	1.4	r -0.2	1.3
Electric power, gas & water	46.9	101.7	101.1	0.6	1.0	-18.6	-11.3	2.0
Scrap & waste	8.1	131.2	120.2	9.2	-0.4	38.4	37.5	11.0
<Reference>								
Electric & electronic products	123.6	79.0	r 79.5	-0.6	r -0.4	-7.3	r -7.1	-1.5

Notes: 1. r: revised figures

2. Quarterly changes are changes from 3 months earlier.

3. "Domestic Corporate Goods Price Index using Chain-weighted index Formula" is classified in the same way as that of "Domestic Corporate Goods Price Index." Weights are updated annually and indexes are chained with the indexes of the previous year. The indexes are based on the year 2007 weights.

4. "Electrical & electronic products" is compiled by combining "Electrical machinery & equipment," "Information & communications equipment," and "Electronic components & devices."