

Research and Statistics Department

FOR RELEASE 2:30 P.M.

Friday, July 21, 2000

## **Revision of the Input-Output Price Index of Manufacturing Industry by Sector (IOPI) to 1995 base**

The Input-Output Price Index of Manufacturing Industry by Sector (IOPI) focuses on the prices of products in manufacturing industry. The IOPI is aggregated by using prices of goods for production as the input price index and prices of produced goods as the output price index, respectively.

### 1. Purpose of the revision

- (1) The base year for both index and weight calculation has been updated from 1990 to 1995 to incorporate the recent changes in Japan's economic structure.
- (2) Comprehensive revision in the index-developing process has been undertaken in order to reduce the cost of compiling the IOPI, including the burden on reporters.
- (3) For users demanding consistent historical time-series indexes, a new 1990 base index using the same methods as the 1995 base index has been produced. The methods for compiling the indexes have been disclosed further to enhance transparency.

### 2. Major points of the revision

#### 2.1. Change of the price collection rule

- (1) The IOPI has been compiled by using the commodity indexes in the Wholesale Price Index (WPI).
- (2) The additional collection of approximately 1,800 price data which had been undertaken exclusively for the IOPI was abolished.

--- The exceptions are some price data which can be taken into the WPI to improve its accuracy. They will continue to be collected and will be taken into the WPI at the time of the revision to 2000 base scheduled for 2002.<sup>1</sup>

(3) The weights within the grouping of “commodity group,” which is the smallest unit of the IOPI, have been calculated by using the weights of commodity indexes in the WPI.

--- The weights for aggregated groupings above the layer of the “commodity group” have been calculated based on the I-O Tables, the method of which is the same as the indexes up to the 1990 base. For the input price index, the values of the intermediate sector for manufacturing industry at purchasers’ prices in the I-O Tables have been used as its weights. For the output price index, the values of domestic products for the manufacturing industry sector at producers’ prices in the I-O Tables have been used.

## 2.2. Simplification in composition of indexes

(1) Up to the 1990 base index, both the gross-weighted base index, which includes internal trade in the same sector, and the net-weighted base index, which excludes internal trade, had been compiled. However, the net-weighted base index has been abolished from the 1995 base, because the need for such data was low compared to the substantial workload required for its compilation.

(2) The index for sector in the gross-weighted base has also been abolished for the same reason as the net-weighted base index.

--- The 1995 base IOPI consists of “manufacturing industry sector” and “aggregated sector,” which correspond to “manufacturing” in “13 sectors” and “aggregated major group” in the I-O Tables respectively. Each sector is classified into “aggregated major commodity group,” “major commodity group” and “commodity group,” successively, which correspond to “aggregated major group,” “major group” and “basic sector” in the I-O Tables respectively.

## 2.3. Consideration for the continuity of the indexes

Because of the revision described in section 2.1, the continuity between the 1995 base index and the 1990 base index has been lost. The new 1990 base index has been produced using the same methods as the 1995 base index to meet the need for consistent historical time-series indexes. For the “manufacturing industry sector” and “major sector,” the linked index, which is the new 1990 base index converted into 1995 base, has also been provided from January 1990 to December 1994.

---

<sup>1</sup> At that time, we will change its name to the Corporate Goods Price Index (CGPI).

---The new 1990 base index is compiled from January 1990 to December 1995.

## 2.4. Further disclosure of methods of compilation

Details of the methods for compiling the IOPI have been disclosed. The correspondence of price data between the IOPI and the WPI, the weights, and the process of compiling indexes have also been disclosed more than before on the BOJ Web site (<http://www.boj.or.jp/en/index.htm>).

## 2.5. Other changes

- (1) A special adjustment to maintain correspondence between the elements of inputs and outputs has been discontinued because the workload required was too great compared to the benefits in improving the accuracy of index.<sup>2</sup>
- (2) Creation of original groupings for the IOPI through modification of the I-O Tables (such as dividing or combining groups, or changing the name of groups) in some categories has been abolished. The groupings of the I-O Tables have been directly adopted to the IOPI to facilitate ease of use for those who make their own indexes.
- (3) The release date of the monthly index has been changed from “the 3<sup>rd</sup> working day counting from the 11<sup>th</sup> of the next month” to “the 7<sup>th</sup> working day of the next month (a day after the release of the WPI),” in principle. As a result of this change, the monthly index will be published a few days earlier than before.

--- Also, the revision of the index to the new base year has been completed half a year earlier than in the past.

## 3. Detailed contents of the revision

Contents of the revision are explained by comparing the 1995 base index and the 1990 base unless otherwise mentioned.

### 3.1. Changes in the number of sector classifications and commodity groupings

--- For changes in the number of commodity groups, see Appendix 1. For details of the changes in commodity groups, see Appendix 2.

---

<sup>2</sup> Up to the 1990 base index, when some outputs or inputs had been excluded from the index for some reason, the inputs used for the outputs or the outputs produced from the inputs were also excluded to maintain consistency between input and output price indexes.

<Input price index>

	1995 base (A)	1990 base (B)	(A) - (B)	New 1990 base (C)	(A) - (C)
Major sectors	14	14	0	14	0
(Sectors)	(47)	40	+7	(46)	+1
Aggregated major commodity groups	18	18	0	18	0
Major commodity groups	58	53	+5	57	+1
Commodity groups	326	358	-32	341	-15

(Note) The indexes of sectors are not calculated.

<Output price index>

	1995 base (A)	1990 base (B)	(A) - (B)	New 1990 base (C)	(A) - (C)
Aggregated major commodity groups = Major sectors	14	14	0	14	0
Major commodity groups (=Sectors)	47	40	+7	46	+1
Commodity groups	312	333	-21	328	-16

- (1) The number of major sectors (14 in both the input and output indexes) and aggregated major commodity groups (18 in the input price index and 14 in the output price index) have not been changed.
- (2) The number of major commodity groups has increased both in the input and output price indexes. This is due to the abolition of original groupings for the IOPI by modifying the I-O Tables, by dividing or combining groups as described in section 2.5. (2).<sup>3 4</sup>
- (3) The number of commodity groups has decreased both in the input and output price indexes. This is mainly due to the abolition of additional price collection for the IOPI as described in section 2.1. (2) and the decrease in the number of groups within the I-O Tables from 1990 to 1995.<sup>5</sup>

<sup>3</sup> In the modification of the I-O Tables for the IOPI, changing the name of groups has also been included.

<sup>4</sup> There is an increase in the number of sectors for the same reason.

<sup>5</sup> Decreases in the number of commodity groups caused mainly by discontinuing the collection of additional price data amount to 29 and 22 in the input and output price indexes. Decreases caused by changes in the number of groups in the I-O Tables from 1990 to 1995 amount to 14 in both the input and output price indexes.

(Reference) Changes in the number of selected commodities

--- For details, see Appendix 3.

	1995 base (A)	1990 base (B)	(A) - (B)			New 1990 base (C)	(A) - (C)		
			Newly selected	Abolish- ed			Newly selected	Abolish- ed	
Input price index	1,232	1,182	+50	+419	-362	1,158	+74	+105	-32
Output price index	1,253	1,402	-149	+126	-307	1,202	+51	+105	-41

### 3.2 Changes in weights of aggregated major commodity groups

--- For details, see Appendix 4. For changes in weights of major sectors, see Appendix 5.

<Input price index>

(Note) Weights are expressed as one-thousandths of input values of the manufacturing industry sector, and are rounded to the first decimal place.

Aggregated major commodity groups	1995 base (A)	1990 base (B)	(A) - (B)	New 1990 base (C)	(A) - (C)
<b>Major increase</b>					
Electrical machinery	138.3	118.9	+19.5	121.6	+16.7
Foods	43.2	35.0	+8.3	41.2	+2.0
Pulp, paper and wooden products	74.6	66.6	+8.0	69.0	+5.6
<b>Major decrease</b>					
Transportation equipment	89.7	116.3	-26.6	84.2	+5.5
Mining	43.6	51.5	-7.9	52.2	-8.6
Textile products	25.3	31.0	-5.7	32.0	-6.7

The weights of “electrical machinery,” “foods” and “pulp, paper and wooden products” have increased. The weights of “transportation equipment,” “mining” and “textile products” have decreased.

--- The decrease in the weight of “transportation equipment” is due to an end to the collection of additional price data. The major “commodity group” omitted by this move was “motor vehicle bodies.”

<Output price index>

(Note) Weights are expressed as one-thousandths of output values of the manufacturing industry sector, and are rounded to the first decimal place.

Aggregated major commodity groups	1995 base (A)	1990 base (B)	(A) - (B)	New 1990 base (C)	(A) - (C)
<b>Major increase</b>					
Electrical machinery	179.8	163.0	+16.8	168.1	+11.6
Foods	114.7	98.2	+16.4	105.6	+9.1
Other industrial products	108.6	97.5	+11.1	101.2	+7.4
<b>Major decrease</b>					
Transportation equipment	116.9	134.6	-17.7	119.1	-2.2
General machinery	82.9	96.3	-13.4	92.5	-9.6
Fabricated metal products	44.7	53.9	-9.2	43.5	+1.2

The weights of “electrical machinery,” “foods” and “other industrial products” have increased. The weights of “transportation equipment,” “general machinery” and “fabricated metal products” have decreased.

--- Decreases in “transportation equipment” and “metal products” are due to an end to the additional price collection for the IOPI. The major “commodity groups” omitted by this move are “motor vehicle bodies” and “metal products for construction.”

### 3.3 Changes in values of the I-O Tables which are conceptually covered by the IOPI and the actual coverage of the index

<Input price index>

	1995 base (A)	1990 base (B)	New 1990 base (C)	(A) - (C)	(C) - (B)
Input values of raw materials, fuel and energy toward the manufacturing industry sector in the I-O Tables <sup>6</sup> (a) : trillion yen	166.7	186.0	186.8	-20.1	+0.8
Input values covered by the index <sup>7</sup> (b) : trillion yen	148.0	167.3	165.2	-17.1	-2.1
b/a : %, % points	88.8	89.9	88.4	+0.4	-1.5

<sup>6</sup> The values of scrap and waste, and by-products are included.

<sup>7</sup> Input values covered by the index (b) is obtained from (a) in the main text by excluding the values of commodities for which price data cannot be collected. The weights of the input price index are calculated as one-thousandths by (b).

<Principal factors in the difference between (C) and (B): (C)-(B)>

(a) Input values of raw materials, fuel and energy toward the manufacturing industry sector in the I-O Tables

(1) Increase due to the abolition of original groupings for the IOPI.<sup>8</sup> : (+ 1.2 trillion yen)

(b) Input values covered by the index

(1) Decrease mainly due to an end to the additional price collection for the IOPI. :(-10.6 trillion yen)

(2) Increase due to an end to the special adjustment to maintain the correspondence between the elements of the inputs and outputs. :(+ 4.8 trillion yen)

(3) Increase due to the abolition of original groupings for the IOPI.<sup>9</sup> :(+ 2.6 trillion yen)

<Output price index>

	1995 base (A)	1990 base (B)	New 1990 base (C)	(A) – (C)	(C) – (B)
Domestic production of the manufacturing industry sector in the I-O Tables <sup>10</sup> (c) : trillion yen	313.3	333.3	337.0	-23.7	+3.6
Output values covered by the index <sup>11</sup> (d) : trillion yen	280.4	312.0	302.4	-22.1	-9.6
d/c : %, % points	89.5	93.6	89.8	-0.3	-3.8

<Principal factors in the difference between (C) and (B): (C)-(B)>

(c) Domestic production of the manufacturing industry sector in the I-O Tables

(1) Increase due to the abolition of original groupings for the IOPI.<sup>12</sup> : (+ 3.6 trillion yen)

(d) Output values covered by the index

(1) Decrease mainly due to an end to the additional price collection for the IOPI. : (-20.6 trillion yen)

<sup>8</sup> Up to the 1990 base index, values of services categorized in the manufacturing industry sector of the I-O Tables were excluded from the IOPI. For the 1995 base index, this adjustment is abolished and the values of the I-O Tables directly correspond to the conceptual domain of the IOPI as (a) or (c) in the main text. But not all of the domain is actually covered by the IOPI because of limits in the availability of price data. Values of services mentioned above are not covered by the IOPI since services are not covered by the WPI.

<sup>9</sup> Up to the 1990 base index, the values of internal trade in the same company were estimated and excluded from the values for the IOPI originally as (b) or (d) in the main text. From the 1995 base index, this exception has been discontinued.

<sup>10</sup> The values of scrap and waste, and by-products are included.

<sup>11</sup> Output values covered by the index (d) is obtained from (c) in the main text by excluding the values of commodities for which price data cannot be collected. The weights expressed as one-thousandths of the output price index are calculated by (d).

<sup>12</sup> See note 8.

- (2) Increase due to an end to the special adjustment to : (+ 4.8 trillion yen) maintain the correspondence between the elements of the inputs and outputs.
- (3) Increase due to the abolition of original groupings for : (+ 5.2 trillion yen) the IOPI.<sup>13</sup>

#### 4. The historical trends of the new and the old indexes

##### 4.1. Developments of the 1995 base index and the 1990 base index

For graphic images of the two indexes, see Appendix 6.

For the retroactive index of 1995 base from January 1995 to June 2000, see Table 1 in the “Figures.” For the linked index, which is the new 1990 base index converted into the 1995 base, the data being made from January 1990 to December 1994, see Table 2 in the “Figures.” Both Table 1 and 2 are available for the index classification level “manufacturing industry sector” and “major sector.”

##### 4.2. Developments of the previous 1990 base index and the new 1990 base index

For graphic images of the two indexes, see Appendix 7.

##### 4.3. (Reference) Paasche check calculated by the new 1990 base index

For the difference ratio between Paasche index (P) and Laspeyres index (L) for 1995 calendar year average of 1990 base ( $(P-L/L*100)$ ), see Appendix 8.

Refer inquiries to:  
Price Statistics Division, Research and Statistics Department  
Bank of Japan  
Tel. +81-3-3279-1111 Ext.3824

---

<sup>13</sup> See note 9.



## Changes in the number of commodity groups

## 1. Input price index

Aggregated major commodity group	1995 base	1990 base	Change	Newly selected	Abolished	Combined	Divided	Others
Manufacturing industry	326	358	-32	+13	-29	-17	+2	-1
Agriculture, forestry and fishery	28	35	-7	+2	-9	0	0	0
Mining	11	13	-2	0	0	-2	0	0
Foods	41	43	-2	+2	-2	0	0	-2
Textile products	15	19	-4	0	0	-5	+1	0
Pulp, paper and wooden products	18	16	+2	+1	0	0	+1	0
Chemical products	56	61	-5	0	-3	-4	0	+2
Petroleum and coal products	10	10	0	+1	-1	0	0	0
Ceramic, stone and clay products	16	16	0	+1	0	-1	0	0
Iron and steel	17	19	-2	+1	-3	0	0	0
Non-ferrous metals	10	13	-3	0	0	-3	0	0
Metal products	10	11	-1	0	-1	0	0	0
General machinery	26	32	-6	0	-5	-1	0	0
Electrical machinery	28	26	+2	+3	0	-1	0	0
Transportation equipment	5	7	-2	+1	-3	0	0	0
Precision instruments	6	6	0	0	0	0	0	0
Other industrial products	25	25	0	+1	-1	0	0	0
Electricity, gas and heat supply	2	5	-1	0	-1	0	0	0
Water supply and waste disposal services	2		0	0	0	0	0	0
Office supplies	--	1	-1	--	--	--	--	-1

## 2. Output price index

Aggregated major commodity group = Major Sector	1995 base	1990 base	Change	Newly selected	Abolished	Combined	Divided	Others
Manufacturing industry	312	333	-21	+11	-22	-16	+1	+5
Foods	43	39	+4	+8	-3	0	0	-1
Textile products	15	20	-5	0	0	-5	+1	-1
Pulp, paper and wooden products	18	18	0	0	0	0	0	0
Chemical products	57	66	-9	0	-5	-5	0	+1
Petroleum and coal products	12	14	-2	0	-1	0	0	-1
Ceramic, stone and clay products	18	18	0	0	0	-1	0	+1
Iron and steel	20	21	-1	0	-3	0	0	+2
Non-ferrous metals	9	12	-3	0	0	-3	0	0
Metal products	12	12	0	0	-1	0	0	+1
General machinery	30	35	-5	0	-5	-1	0	+1
Electrical machinery	32	31	+1	+1	0	-1	0	+1
Transportation equipment	12	12	0	+2	-3	0	0	+1
Precision instruments	7	7	0	0	0	0	0	0
Other industrial products	27	28	-1	0	-1	0	0	0

## Changes in commodity groups

## 1. Input price index

1.1. Increase caused by the newly adopted commodity price data from the WPI due to the change in price collection rule of the IOPI (+12)

(Note) The numbers in the table are the row code of basic sector classification in the I-O Tables.

Aggregated major commodity group	Commodity group (1995 base)
Agriculture, forestry and fishery	
	0311-002 Marine fisheries (imported)
	0312-001 Inland water fisheries and culture
Foods	
	1121-021 Beer
	1129-031 Manufactured ice
Pulp, paper and wooden products	
	1711-021 Wooden fixtures
Petroleum and coal products	
	2111-012 Jet fuel oils
Ceramic, stone and clay products	
	2523-011 Cement products
Iron and steel	
	2631-021 Cast iron pipes and tubes
Electrical machinery	
	3321-011 Wired communication equipment
	3321-021 Radio communication equipment
Transportation equipment	
	3622-011 Aircrafts
Other industrial products	
	3919-021 Audio and video records, other information recording materials

1.2. Decrease due to the abolition of additional price collection for the IOPI and of adoption of substitutional price data (-29)

(Note) The numbers in the table are the row code of basic sector classification in the I-O Tables.

Aggregated major commodity group	Commodity group (1990 base)
Agriculture, forestry and fishery	
	0111-012 Rice straw
	0112-011 Sweet potatoes
	0112-012 Potatoes
	0114-012 Apples
	0115-029 Other crops for beverages
	0115-092 Crops for edible agricultural products
	0116-093 Crops for inedible agricultural products
	0121-099 Other livestock-raising
	0311-041 Marine culture
Foods	
	1114-011 Milled rice
	1114-019 Other grain milling
Chemical products	
	2031-029 Other petrochemical aromatic products
	2039-031 Oil and fat industrial chemicals
	2079-091 Catalyzer
Petroleum and coal products	
	2121-019 Other coal products
Iron and steel	
	2631-011 Forged steel
	2631-012 Cast steel
	2649-099 Other iron or steel products
Metal products	
	2811-011 Metal products for construction
General machinery	
	3011-021 Turbines
	3029-092 Pulp equipment and paper machinery
	3029-099 Other special industrial machinery, (n.e.c.)
	3111-099 Other office machines, n.e.c.
	3112-012 Amusement machinery
Transportation equipment	
	3541-011 Motor vehicle bodies
	3541-021 Internal combustion engines for motor vehicles and parts
	3629-099 Other transport equipment, n.e.c.
Other industrial products	
	2211-019 Other plastic products
Electricity, gas and heat supply	
	5111-041 Self-power generation

## Changes in commodity groups (cont'd)

### 1.3. Decrease due to the change in classifications of the I-O Tables from 1990 to 1995 (-14)

(Note) The numbers in the table are the row code of basic sector classification in the I-O Tables.

#### Combined commodity group (-17)

Aggregated major commodity group	
Commodity group (1995 base)	Commodity group (1990 base)
<b>Mining</b>	
0611-012 Non-ferrous metallic ores	0612-011 Copper ores 0612-012 Lead and zinc ores 0612-019 Other non-ferrous metal ores
<b>Textile products</b>	
1511-021 Fiber yarns	1511-021 Cotton yarn 1511-031 Synthetic fiber yarn 1511-041 Woolen yarn 1511-099 Other fiber yarns
1512-031 Woolen fabrics, hemp fabrics, and other fabrics	1512-031 Woolen fabrics 1512-099 Other fabrics, n.e.c.
1519-099 Other fabricated textile products	1512-091 Narrow fabrics (under 13cm width)
1529-011 Bedding	1519-099 Other fabricated textile products 1529-011 Cotton and bedding
<b>Chemical products</b>	
2011-021 Chemical fertilizer	2011-021 Nitric fertilizers 2011-029 Other elemental fertilizers 2011-031 Combined fertilizers
2029-099 Other industrial inorganic chemicals	2029-011 Sulfuric acid 2029-099 Other industrial inorganic chemicals
2039-099 Other industrial organic chemicals	2039-011 Coal-tar products 2039-099 Other industrial organic chemicals
<b>Ceramic, stone and clay products</b>	
2599-099 Miscellaneous ceramic, stone and clay products	2599-091 Asbestos products 2599-099 Ceramic, stone and clay products, n.e.c.
<b>Non-ferrous metals</b>	
2711-021 Lead and Zinc (inc. regenerated lead)	2711-021 Lead (inc. regenerated lead) 2711-031 Zinc (inc. regenerated zinc)
2721-011 Electric wires and cables	2721-011 Copper electric wires 2721-012 Aluminium electric wires 2721-013 Cables
<b>General machinery</b>	
3029-021 Textile machinery	3019-021 Sewing machines and wool knitting machinery
3031-099 Other general machines and parts	3029-021 Textile machinery 3031-099 Other general machines and parts
<b>Electrical machinery</b>	
3211-011 Electric audio equipment	3211-011 Electric audio equipment 3212-099 Parts and accessories of other electric audio equipment

#### Divided commodity group (+2)

Aggregated major commodity group	
Commodity group (1995 base)	Commodity group (1990 base)
<b>Textile products</b>	
1513-011 Knitting fabrics	1513-011 Knitted fabrics
1521-011 Woven fabric apparel	1521-011 Wearing apparel
1521-021 Knitted apparel	1522-011 Other wearing apparel and clothing accessories
1522-099 Other wearing apparel and clothing accessories	
<b>Pulp, paper and wooden products</b>	
1811-011 Pulp	1811-011 Pulp
1811-012I Waste paper	

#### Newly-established commodity group (+1)

Aggregated major commodity group	
Commodity group (1995 base)	Commodity group (1990 base)
<b>Electrical machinery</b>	
3359-021 Liquid crystal devices	---

## Changes in commodity groups (cont'd)

### 2. Output price index

2.1. Increase caused by the newly adopted commodity price data from the WPI due to the change in price collection rule of the IOPI (+10)

(Note) The numbers in the table are the row code of basic sector classification in the I-O Tables.

Aggregated major commodity group	
Commodity group (1995 base)	
Foods	
1111-011	Beef meat (bone meat)
1111-012	Pork (bone meat)
1111-013	Poultry meat
1111-015	By-products of slaughtering and meat processing
1113-021	Salted, dried or smoked seafood
1113-031	Bottled or canned seafood
1113-041	Fish paste
1113-099	Other processed seafoods
Transportation equipment	
3611-011	Steel ships
3611-021	Ships except steel ships

2.2. Decrease due to the abolition of additional price collection for the IOPI and of adoption of substitutional price data (-22)

(Note) The numbers in the table are the row code of basic sector classification in the I-O Tables.

Aggregated major commodity group	
Commodity group (1990 base)	
Foods	
1112-021	Canned or bottled meat products
1114-011	Milled rice
1114-019	Other grain milling
Chemical products	
2031-029	Other petrochemical aromatic products
2032-013	Ethylene dichloride
2039-021	Methane derivatives
2039-031	Oil and fat industrial chemicals
2079-091	Catalyzer
Petroleum and coal products	
2121-019	Other coal products
Iron and steel	
2631-011	Forged steel
2631-012	Cast steel
2649-099	Other iron or steel products
Metal products	
2811-011	Metal products for construction
General machinery	
3011-021	Turbines
3029-092	Pulp equipment and paper machinery
3029-099	Other special industrial machinery, (n.e.c.)
3111-099	Other office machines, n.e.c.
3112-012	Amusement machinery
Transportation equipment	
3541-011	Motor vehicle bodies
3541-021	Internal combustion engines for motor vehicles and parts
3629-099	Other transport equipment, n.e.c.
Other industrial products	
2211-019	Other plastic products

## Changes in commodity groups (cont'd)

### 2.3. Decrease due to the change in classifications of the I-O Tables from 1990 to 1995 (-14)

(Note) The numbers in the table are the row code of basic sector classification in the I-O Tables.

#### Combined commodity group (-16)

Aggregated major commodity group	
Commodity group (1995 base)	Commodity group (1990 base)
<b>Textile products</b>	
1511-021 Fiber yarns	1511-021 Cotton yarn
	1511-031 Synthetic fiber yarn
1512-031 Woolen fabrics, hemp fabrics, and other fabrics	1511-041 Woolen yarn
	1511-099 Other fiber yarns
	1512-031 Woolen fabrics
1519-099 Other fabricated textile products	1512-099 Other fabrics, n.e.c.
	1512-091 Narrow fabrics (under 13cm width)
1529-011 Bedding	1519-099 Other fabricated textile products
	1529-011 Cotton and bedding
<b>Chemical products</b>	
2011-021 Chemical fertilizer	2011-021 Nitric fertilizers
	2011-029 Other elemental fertilizers
	2011-031 Combined fertilizers
2029-099 Other industrial inorganic chemicals	2029-011 Sulfuric acid
	2029-099 Other industrial inorganic chemicals
2039-099 Other industrial organic chemicals	2039-011 Coal-tar products
	2039-099 Other industrial organic chemicals
2079-099 Other final chemical products, n.e.c.	2079-011 Gunpowder
	2079-099 Other final chemical products, n.e.c.
<b>Ceramic, stone and clay products</b>	
2599-099 Miscellaneous ceramic, stone and clay products	2599-091 Asbestos products
	2599-099 Ceramic, stone and clay products, n.e.c.
<b>Non-ferrous metals</b>	
2711-021 Lead and Zinc (inc. regenerated lead)	2711-021 Lead (inc. regenerated lead)
	2711-031 Zinc (inc. regenerated zinc)
2721-011 Electric wires and cables	2721-011 Copper electric wires
	2721-012 Aluminium electric wires
	2721-013 Cables
<b>General machinery</b>	
3029-021 Textile machinery	3019-021 Sewing machines and wool knitting machinery
3031-099 Other general machines and parts	3029-021 Textile machinery
	3031-099 Other general machines and parts
<b>Electrical machinery</b>	
3211-011 Electric audio equipment	3211-011 Electric audio equipment
	3212-099 Parts and accessories of other electric audio equipment

#### Divided commodity group (+1)

Aggregated major commodity group	
Commodity group (1995 base)	Commodity group (1990 base)
<b>Textile products</b>	
1513-011 Knitting fabrics	1513-011 Knitted fabrics
1521-011 Woven fabric apparel	1521-011 Wearing apparel
1521-021 Knitted apparel	1522-011 Other wearing apparel and clothing accessories
1522-099 Other wearing apparel and clothing accessories	

#### Newly-established commodity group (+1)

Aggregated major commodity group	
Commodity group (1995 base)	Commodity group (1990 base)
<b>Electrical machinery</b>	
3359-021 Liquid crystal devices	---

## Changes in the number of selected commodities

## 1. Input price index

Aggregated major commodity group	1995 base	1990 base	Change	Newly selected	(1)		Abolished	WPI revision	(3) Abolition of additional price collection	(4) Abolition of the adoption of substitutional data	Others	Combined	WPI revision	IOPI revision	Divided	WPI revision	IOPI revision	Others	(5) Plurally adopted commodities	(6) Scrap and waste, or by-products	Others
					WPI revision	IOPI revision															
Manufacturing industry	1,232	1,182	+50	+419	+88	+331	-362	-24	-221	-107	-10	-25	-6	-19	+8	+6	+2	+10	+33	-15	-8
Agriculture, forestry and fishery	53	95	-42	+5	+1	+4	-43	0	-40	-3	0	-3	0	-3	0	0	0	-1	0	-2	+1
Mining	24	45	-21	0	0	0	-13	-2	-7	0	-4	-3	-1	-2	0	0	0	-5	+1	-6	0
Foods	172	144	+28	+57	+5	+52	-28	-1	-24	-3	0	-1	0	-1	0	0	0	0	+4	-1	-3
Textile products	110	63	+47	+47	+9	+38	-16	-4	-12	0	0	-4	-2	-2	0	0	0	+20	+20	0	0
Pulp, paper and wooden products	105	92	+13	+28	+4	+24	-15	-3	-10	-2	0	0	0	0	0	0	0	0	+1	-1	0
Chemical products	162	205	-43	+18	+12	+6	-68	0	-56	-12	0	-4	0	-4	+4	+3	+1	+7	+7	-2	+2
Petroleum and coal products	21	30	-9	+2	0	+2	-6	0	-4	-2	0	-3	0	-3	0	0	0	-2	0	-2	0
Ceramic, stone and clay products	50	48	+2	+22	+1	+21	-19	-5	-13	-1	0	0	0	0	0	0	0	-1	0	-1	0
Iron and steel	63	80	-17	+6	+1	+5	-21	-1	-18	-2	0	-3	-2	-1	+1	+1	0	0	0	0	0
Non-ferrous metals	54	63	-9	+2	+2	0	-9	-2	-5	-2	0	-2	0	-2	0	0	0	0	0	0	0
Metal products	53	45	+8	+13	+7	+6	-6	0	-3	-3	0	0	0	0	0	0	0	+1	0	0	+1
General machinery	100	66	+34	+71	+11	+60	-36	0	-3	-33	0	0	0	0	0	0	0	-1	0	0	-1
Electrical machinery	134	84	+50	+75	+25	+50	-25	-4	-2	-19	0	-2	-1	-1	+2	+2	0	0	0	0	0
Transportation equipment	9	13	-4	+6	+1	+5	-10	0	-2	-8	0	0	0	0	0	0	0	0	0	0	0
Precision instruments	32	14	+18	+26	+5	+21	-9	0	-2	-7	0	0	0	0	+1	0	+1	0	0	0	0
Other industrial products	84	75	+9	+40	+3	+37	-31	-2	-20	-9	0	0	0	0	0	0	0	0	0	0	0
Electricity, gas and heat supply	4	6	0	+1	+1	0	-1	0	0	-1	0	0	0	0	0	0	0	0	0	0	0
Water supply and waste disposal services	2		0	0	0	0	0	0	0	0	0	0	0	0	0	0	0	0	0	0	0
Office supplies	--	14	-14	--	--	--	-6	--	--	--	-6	--	--	--	--	--	--	-8	--	--	-8

(Notes) 1. Changes due to the revision of commodities included in the WPI from 1990 base to 1995 base.

2. Changes due to the change in price collection rule of the IOPI.

3. Changes due to the abolition of additional price collection caused by the change in price collection rule of the IOPI.

4. Changes due to the abolition of adoption of substitutional price data caused by the change in price collection rule of the IOPI.

5. Net increase in the number of commodities which are adopted by plural commodity groups in the IOPI.

6. Changes in the number of commodities in scrap and waste, or by-products.

Changes in the number of selected commodities (cont'd)

2. Output price index

Aggregated major commodity group = Major sectors	1995 base	1990 base	Change	Newly selected	(1)	(2)	Abolished	WPI revision	(3)	(4)	Combined	WPI revision	IOPI revision	Divided	WPI revision	IOPI revision	Others	(5)	(6)	Others
					WPI revision	IOPI revision			Abolition of additional price collection	Abolition of the adoption of substitutional data								Plurally adopted commodities	Scrap and waste, or by- products	
Manufacturing industry	1,253	1,402	-149	+126	+85	+41	-307	-36	-232	-39	-48	-25	-23	+9	+7	+2	+71	+21	+50	0
Foods	139	128	+11	+30	+4	+26	-19	0	-17	-2	-3	0	-3	0	0	0	+3	+2	+2	-1
Textile products	87	105	-18	+2	+2	0	-22	-5	-17	0	-8	-5	-3	0	0	0	+10	+13	-3	0
Pulp, paper and wooden products	96	109	-13	+5	+2	+3	-19	-3	-15	-1	-1	0	-1	0	0	0	+2	+2	0	0
Chemical products	181	223	-42	+21	+20	+1	-71	-1	-59	-11	-5	0	-5	+4	+3	+1	+9	+3	+5	+1
Petroleum and coal products	19	27	-8	0	0	0	-5	0	-3	-2	-3	0	-3	0	0	0	0	0	0	0
Ceramic, stone and clay products	58	79	-21	+2	+2	0	-24	-5	-19	0	0	0	0	0	0	0	+1	0	+1	0
Iron and steel	77	106	-29	+2	+2	0	-31	-2	-27	-2	-4	-2	-2	+1	+1	0	+3	0	+3	0
Non-ferrous metals	45	52	-7	+3	+3	0	-8	-1	-6	-1	-2	0	-2	0	0	0	0	0	0	0
Metal products	62	69	-7	+3	+3	0	-16	-2	-11	-3	-1	0	-1	0	0	0	+7	0	+6	+1
General machinery	143	135	+8	+17	+13	+4	-16	-3	-12	-1	-2	-2	0	0	0	0	+9	0	+10	-1
Electrical machinery	177	166	+11	+34	+30	+4	-19	-10	-8	-1	-17	-15	-2	+3	+2	+1	+10	0	+10	0
Transportation equipment	38	40	-2	+1	+0	+1	-13	0	-3	-10	0	0	0	0	0	0	+10	+1	+9	0
Precision instruments	41	46	-5	+4	+3	+1	-10	0	-8	-2	-1	0	-1	0	0	0	+2	0	+2	0
Other industrial products	90	117	-27	+2	+1	+1	-34	-4	-27	-3	-1	-1	0	+1	+1	0	+5	0	+5	0

(Notes) 1. Changes due to the revision of commodities included in the WPI from 1990 base to 1995 base.

2. Changes due to the change in price collection rule of the IOPI.

3. Changes due to the abolition of additional price collection caused by the change in price collection rule of the IOPI.

4. Changes due to the abolition of adoption of substitutional price data caused by the change in price collection rule of the IOPI.

5. Net increase in the number of commodities which are adopted by plural commodity groups in the IOPI.

6. Changes in the number of commodities in scrap and waste, or by-products.

## Changes in weights of aggregated major commodity groups

(Note) Weights are expressed as one-thousandths of input values of the manufacturing industry sector.

## 1. Input price index

	1995 base (A)	1990 base (B)	(A) - (B)	New 1990 base (C)	(A) - (C)
Manufacturing industry	1,000.000	1,000.000	---	1,000.000	---
Agriculture, forestry and fishery	57.324	60.350	-3.026	59.989	-2.665
Mining	43.557	51.450	-7.893	52.204	-8.647
Foods	43.248	34.950	+8.298	41.225	+2.023
Textile products	25.311	30.980	-5.669	31.973	-6.662
Pulp, paper and wooden products	74.577	66.620	+7.957	69.002	+5.575
Chemical products	106.684	100.610	+6.074	102.750	+3.934
Petroleum and coal products	18.103	18.350	-0.247	23.328	-5.225
Ceramic, stone and clay products	24.515	22.820	+1.695	23.709	+0.806
Iron and steel	104.855	108.810	-3.955	120.761	-15.906
Non-ferrous metals	52.180	52.940	-0.760	55.686	-3.506
Metal products	40.332	35.420	+4.912	37.648	+2.684
General machinery	44.296	46.830	-2.534	46.856	-2.560
Electrical machinery	138.328	118.870	+19.458	121.611	+16.717
Transportation equipment	89.703	116.300	-26.597	84.223	+5.480
Precision instruments	6.008	6.480	-0.472	6.694	-0.686
Other industrial products	97.545	91.920	+5.625	89.580	+7.965
Electricity, gas and heat supply	30.745	33.750	-3.005	30.209	+0.536
Water supply and waste disposal services	2.689	2.550	+0.139	2.552	+0.137

(Note) Weights are expressed as one-thousandths of output values of the manufacturing industry sector.

## 2. Output price index

	1995 base (A)	1990 base (B)	(A) - (B)	New 1990 base (C)	(A) - (C)
Manufacturing industry	1,000.000	1,000.000	---	1,000.000	---
Foods	114.650	98.240	+16.410	105.583	+9.067
Textile products	36.422	41.970	-5.548	43.277	-6.855
Pulp, paper and wooden products	63.492	61.110	+2.382	63.052	+0.440
Chemical products	89.961	84.760	+5.201	85.214	+4.747
Petroleum and coal products	36.328	32.020	+4.308	35.019	+1.309
Ceramic, stone and clay products	34.660	32.740	+1.920	33.785	+0.875
Iron and steel	56.819	65.210	-8.391	69.742	-12.923
Non-ferrous metals	21.247	23.670	-2.423	24.422	-3.175
Metal products	44.674	53.910	-9.236	43.469	+1.205
General machinery	82.873	96.260	-13.387	92.460	-9.587
Electrical machinery	179.764	162.960	+16.804	168.136	+11.628
Transportation equipment	116.907	134.580	-17.673	119.074	-2.167
Precision instruments	13.602	15.060	-1.458	15.534	-1.932
Other industrial products	108.601	97.510	+11.091	101.233	+7.368



## Changes in weights of major sectors

(Note) Weights are expressed as one-thousandths of input values of the manufacturing industry sector.

## 1. Input price index

	1995 base (A)	1990 base (B)	(A) - (B)	New 1990 base (C)	(A) - (C)
Manufacturing industry	1,000.000	1,000.000	---	1,000.000	---
Foods	119.413	100.870	+18.543	111.787	+7.626
Textile products	31.723	38.200	-6.477	41.186	-9.463
Pulp, paper and wooden products	65.820	64.150	+1.670	64.447	+1.373
Chemical products	78.034	79.120	-1.086	76.128	+1.906
Petroleum and coal products	31.045	33.830	-2.785	37.653	-6.608
Ceramic, stone and clay products	26.659	25.850	+0.809	25.786	+0.873
Iron and steel	61.985	67.150	-5.165	79.243	-17.258
Non-ferrous metals	24.819	27.310	-2.491	28.321	-3.502
Metal products	45.031	44.410	+0.621	43.434	+1.597
General machinery	87.761	88.180	-0.419	88.904	-1.143
Electrical machinery	169.786	151.470	+18.316	152.129	+17.657
Transportation equipment	151.951	175.160	-23.209	149.495	+2.456
Precision instruments	11.253	11.770	-0.517	12.021	-0.768
Other industrial products	94.720	92.530	+2.190	89.466	+5.254

## 2. Output price index

(Note \*)

(Note) Weights are expressed as one-thousandths of output values of the manufacturing industry sector.

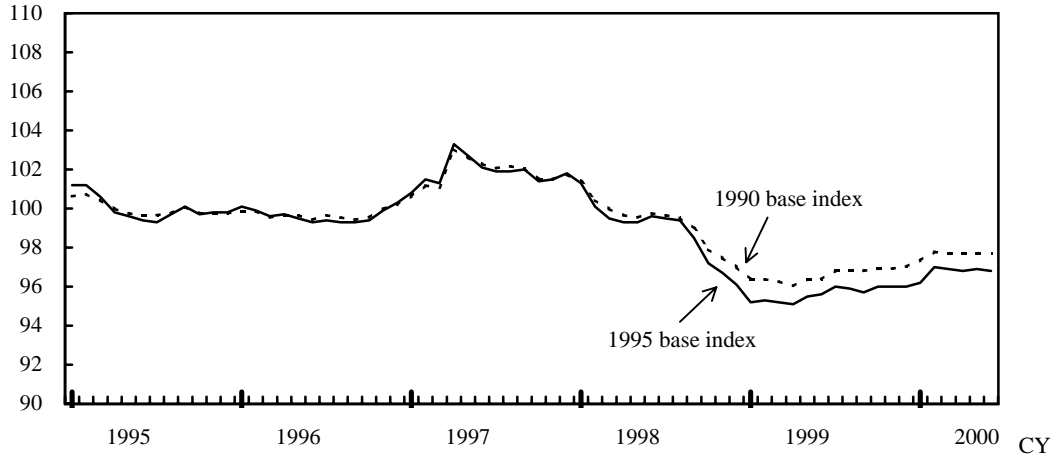
	1995 base (A)	1990 base (B)	(A) - (B)	New 1990 base (C)	(A) - (C)
Manufacturing industry	1,000.000	1,000.000	---	1,000.000	---
Foods	114.650	98.240	+16.410	105.583	+9.067
Textile products	36.422	41.970	-5.548	43.277	-6.855
Pulp, paper and wooden products	63.492	61.110	+2.382	63.052	+0.440
Chemical products	89.961	84.760	+5.201	85.214	+4.747
Petroleum and coal products	36.328	32.020	+4.308	35.019	+1.309
Ceramic, stone and clay products	34.660	32.740	+1.920	33.785	+0.875
Iron and steel	56.819	65.210	-8.391	69.742	-12.923
Non-ferrous metals	21.247	23.670	-2.423	24.422	-3.175
Metal products	44.674	53.910	-9.236	43.469	+1.205
General machinery	82.873	96.260	-13.387	92.460	-9.587
Electrical machinery	179.764	162.960	+16.804	168.136	+11.628
Transportation equipment	116.907	134.580	-17.673	119.074	-2.167
Precision instruments	13.602	15.060	-1.458	15.534	-1.932
Other industrial products	108.601	97.510	+11.091	101.233	+7.368

(Note) \* As the category "major sector" is common to "major aggregated commodity group" in the output price index, the table of the output price index is the same as the table in Appendix 4.

## Developments of the 1995 base index and the 1990 base index

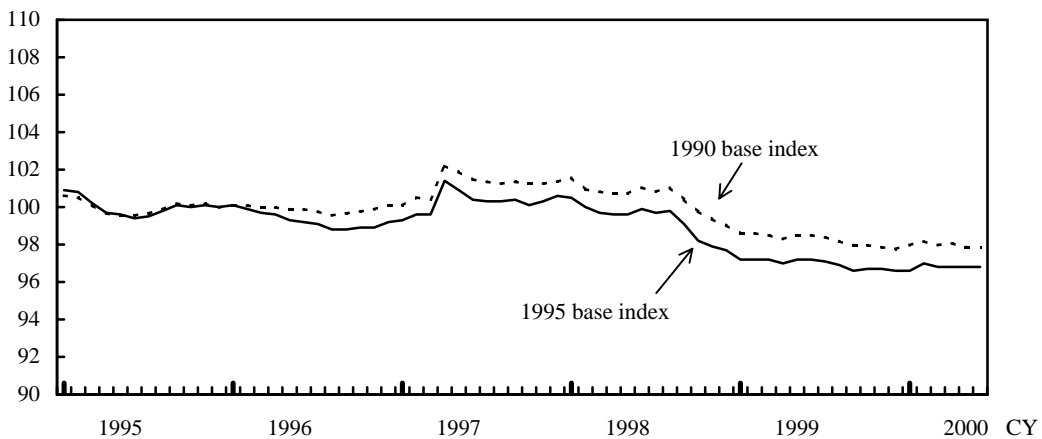
(Note) The 1990 base index is converted so that its 1995 average will be 100.

(1995 average=100) **Input price index <Manufacturing industry sector>**



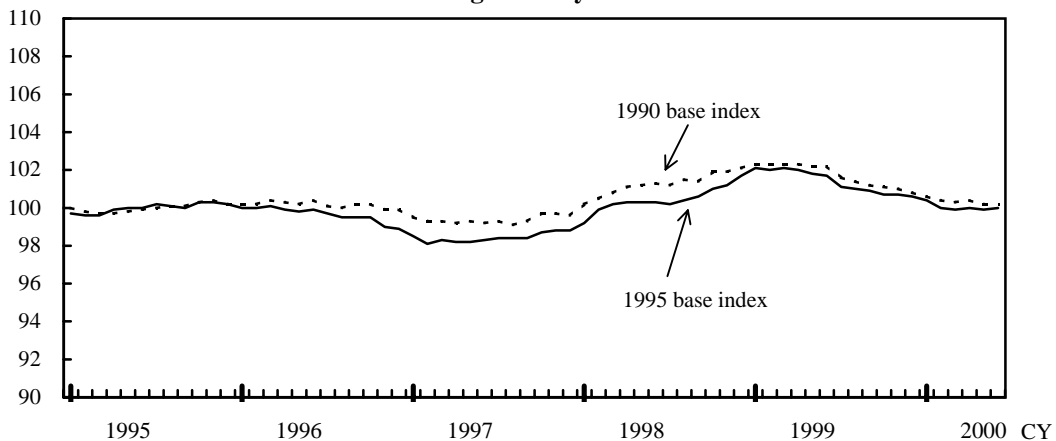
The 1995 base index is below the 1990 base index. This is because "electrical machinery" shifted downward in prices due to a reduction in costs achieved by technological innovation and returns by scale, and increased in the weights. This is also because "transportation equipment" shifted downward in prices.

(1995 average=100) **Output price index <Manufacturing industry sector>**



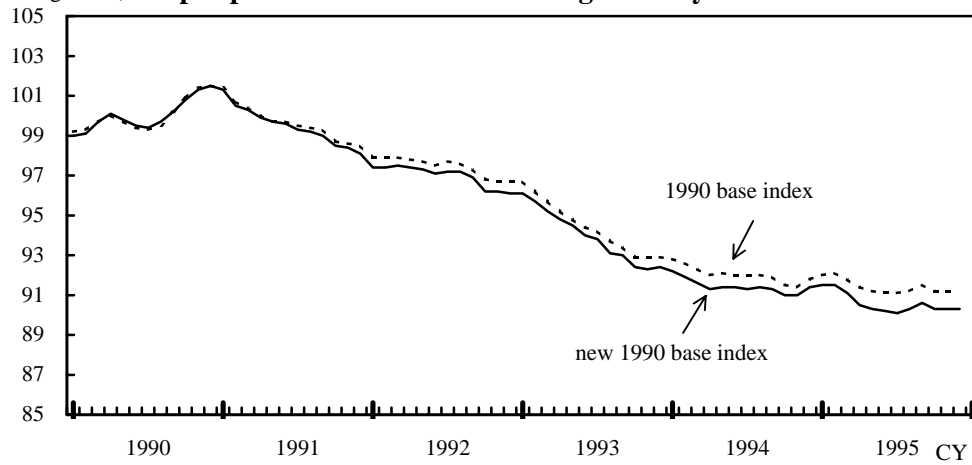
The 1995 base index is below the 1990 base index. This is for the same reasons identified in the input price index as well as downward shifts in the prices of "iron and steel."

(1995 average=100) **Output/Input price ratio index <Manufacturing industry sector>**

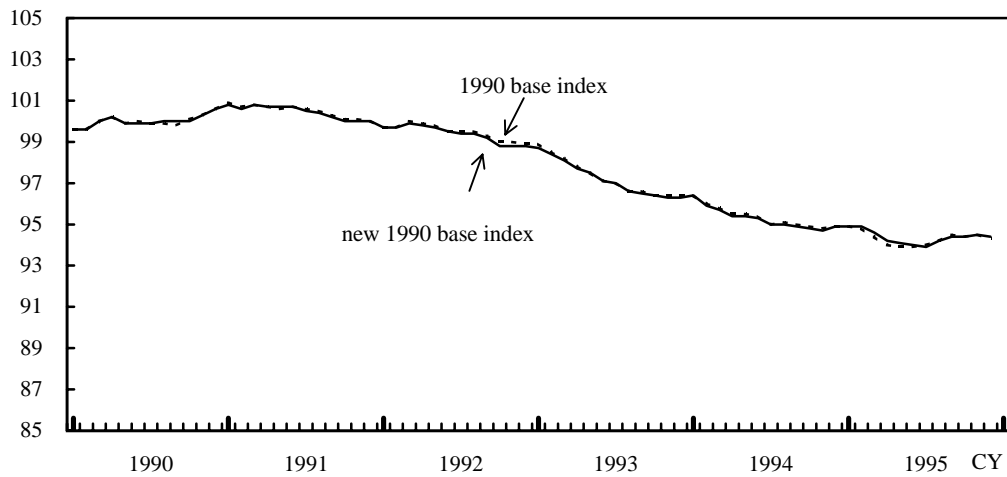


## Developments of the previous 1990 base index and the new 1990 base index

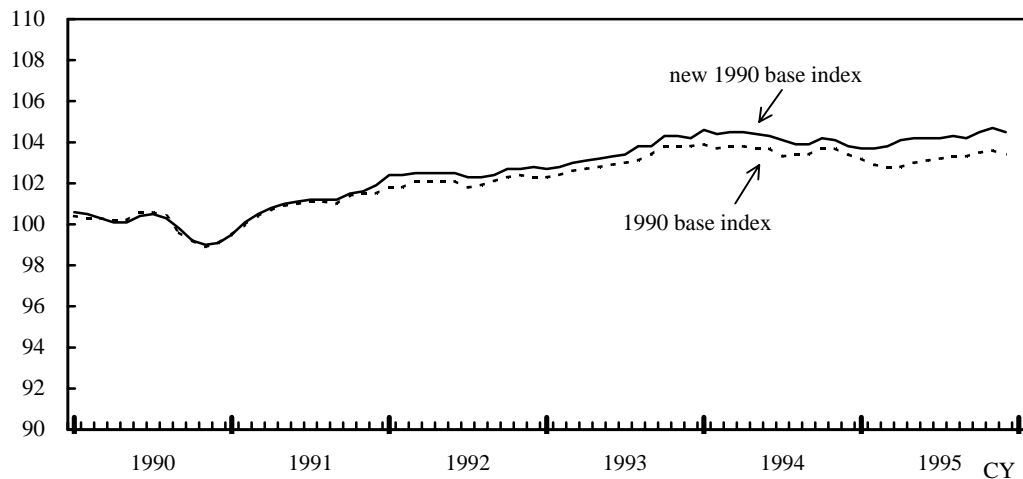
(1990 average=100) **Input price index <Manufacturing industry sector>**



(1990 average=100) **Output price index <Manufacturing industry sector>**



(1990 average=100) **Output/Input price ratio index <Manufacturing industry sector>**



## Paasche check calculated by the new 1990 base index

(Note) Figures in parentheses are the indexes and difference ratios of 1985 base in the former revision.

Major commodity groups	Input price index			Output price index		
	Paasche Index	Laspeyres Index	Difference (%)	Paasche Index	Laspeyres Index	Difference (%)
	P <sup>(Note 1)</sup>	L <sup>(Note 2)</sup>	$\frac{P-L}{L} \times 100$	P <sup>(Note 1)</sup>	L <sup>(Note 2)</sup>	$\frac{P-L}{L} \times 100$
Manufacturing industry	88.1 (89.3)	90.6 (88.6)	-2.8 (+0.8)	92.3 (92.4)	94.4 (94.6)	-2.2 (-2.3)
Agriculture, forestry and fishery	84.3 (88.8)	87.1 (91.1)	-3.2 (-2.5)	---	---	---
Mining	63.6 (54.2)	66.3 (56.1)	-4.1 (-3.4)	---	---	---
Foods	91.2 (93.9)	95.2 (94.9)	-4.2 (-1.1)	101.7 (100.8)	102.5 (101.1)	-0.8 (-0.3)
Textile products	86.5 (91.7)	85.2 (92.9)	+1.5 (-1.3)	96.8 (100.2)	96.7 (97.9)	+0.1 (+2.3)
Pulp, paper and wooden products	97.7 (102.9)	97.7 (100.6)	0.0 (+2.3)	101.7 (104.1)	101.5 (104.7)	+0.2 (-0.6)
Chemical products	93.8 (89.0)	94.5 (89.8)	-0.7 (-0.9)	92.7 (90.0)	93.5 (90.9)	-0.9 (-1.0)
Petroleum and coal products	76.8 (72.5)	78.5 (71.3)	-2.2 (+1.7)	87.4 (74.9)	87.9 (75.6)	-0.6 (-0.9)
Ceramic, stone and clay products	96.4 (99.9)	96.3 (97.0)	+0.1 (+3.0)	99.0 (102.6)	99.6 (102.4)	-0.6 (+0.2)
Iron and steel	88.2 (96.7)	89.4 (96.5)	-1.3 (+0.2)	87.2 (95.4)	88.0 (95.6)	-0.9 (-0.2)
Non-ferrous metals	77.3 (94.5)	78.4 (95.3)	-1.4 (-0.8)	81.1 (97.4)	82.4 (98.5)	-1.6 (-1.1)
Metal products	95.1 (107.0)	97.1 (101.1)	-2.1 (+5.8)	95.8 (105.9)	97.3 (106.5)	-1.5 (-0.6)
General machinery	100.3 (101.5)	100.3 (102.9)	0.0 (-1.4)	98.4 (99.4)	98.9 (101.4)	-0.5 (-2.0)
Electrical machinery	78.1 (79.2)	85.1 (78.2)	-8.2 (+1.3)	77.5 (74.9)	82.7 (79.9)	-6.3 (-6.3)
Transportation equipment	95.2 (92.5)	95.2 (93.2)	0.0 (-0.8)	94.9 (91.6)	94.9 (93.9)	0.0 (-2.4)
Precision instruments	96.1 (92.3)	96.2 (95.0)	-0.1 (-2.8)	95.8 (93.8)	95.7 (94.6)	+0.1 (-0.8)
Other industrial products	99.3 (99.2)	99.8 (99.6)	-0.5 (-0.4)	101.1 (98.2)	101.9 (100.0)	-0.8 (-1.8)
Electricity, gas and heat supply	97.7 (---)	97.8 (---)	-0.1 (---)	---	---	---
Water supply and waste disposal services	108.8 (---)	108.6 (---)	+0.2 (---)	---	---	---

(Note) 1. Paasche indexes are calculated by using the 1995 calendar year average indexes of commodities in the new 1990 base index and the weights for the 1995 base index.

2. Laspeyres indexes are the 1995 calendar year average indexes of the new 1990 base index.

# < F i g u r e s >

## Revision of the Input-Output Price Index of Manufacturing Industry by Sector (IOPI) to 1995 base

### 1. 1995 base indexes (from January 1995 to June 2000)

	Page
1.1. Input price index	----- 1
1.2. Output price index	----- 11
1.3. Output/Input price ratio index	----- 17

### 2. 1995 base linked indexes (from January 1990 to December 1994)

	Page
2.1. Input price index	----- 19
2.2. Output price index	----- 22

- (Notes)
1. The 1995 base indexes, including the indexes of lower classification levels such as the aggregated commodity group and the commodity group, are available on the BOJ Web site at the data downloading corner.
  2. The new 1990 base indexes, which are compiled by the same methods as the 1995 base indexes, starting from January 1990 and ending at December 1995, are also available on the Web site mentioned above.

## 1995 Base Input-Output Price Index of Manufacturing Industry by Sector (from January 1995 to June 2000)

## 1.1.(1) Input price index - Indexes of manufacturing industry sector and aggregated major commodity group

(1995 average = 100)

Sector classification										
Aggregated major commodity group		Manufacturing industry			Domestic products			Imports		
Number of items		1,232	Monthly changes	Yearly changes	966	Monthly changes	Yearly changes	266	Monthly changes	Yearly changes
Weight		1,000.000	%	%	877.308	%	%	122.692	%	%
C.Y.	1995	100.0	--	-0.9	100.0	--	-1.0	100.0	--	-0.5
	1996	99.6	--	-0.4	98.0	--	-2.0	111.5	--	11.5
	1997	101.9	--	2.3	99.0	--	1.0	122.3	--	9.7
	1998	98.9	--	-2.9	97.0	--	-2.0	112.0	--	-8.4
	1999	95.6	--	-3.3	94.8	--	-2.3	101.8	--	-9.1
F.Y.	1995	99.7	--	-1.1	99.5	--	-1.3	101.1	--	-0.4
	1996	100.0	--	0.3	97.8	--	-1.7	116.0	--	14.7
	1997	101.6	--	1.6	99.1	--	1.3	119.8	--	3.3
	1998	97.6	--	-3.9	96.3	--	-2.8	107.3	--	-10.4
	1999	96.0	--	-1.6	94.7	--	-1.7	104.9	--	-2.2
1995	Jan.	101.2	0.3	-0.6	100.6	0.2	-1.3	105.5	-0.3	4.5
	Feb.	101.2	0.0	-0.2	100.7	0.1	-1.0	104.7	-0.8	5.9
	Mar.	100.6	-0.6	-0.5	100.6	-0.1	-0.8	100.4	-4.1	1.5
	Apr.	99.8	-0.8	-1.0	100.5	-0.1	-0.7	94.7	-5.7	-2.9
	May	99.6	-0.2	-1.3	100.3	-0.2	-0.8	94.6	-0.1	-4.7
	June	99.4	-0.2	-1.5	100.1	-0.2	-0.9	94.3	-0.3	-6.1
	July	99.3	-0.1	-1.5	100.0	-0.1	-1.0	94.9	0.6	-4.3
	Aug.	99.7	0.4	-1.2	99.8	-0.2	-1.1	98.4	3.7	-2.7
	Sep.	100.1	0.4	-0.7	99.8	0.0	-1.1	102.6	4.3	1.3
	Oct.	99.7	-0.4	-0.7	99.3	-0.5	-1.1	102.6	0.0	1.6
	Nov.	99.8	0.1	-0.6	99.2	-0.1	-1.0	103.5	0.9	1.5
	Dec.	99.8	0.0	-1.1	99.2	0.0	-1.2	103.8	0.3	-1.9
1996	Jan.	100.1	0.3	-1.1	99.0	-0.2	-1.6	107.9	3.9	2.3
	Feb.	99.9	-0.2	-1.3	98.7	-0.3	-2.0	108.1	0.2	3.2
	Mar.	99.6	-0.3	-1.0	98.5	-0.2	-2.1	107.7	-0.4	7.3
	Apr.	99.7	0.1	-0.1	98.3	-0.2	-2.2	110.0	2.1	16.2
	May	99.5	-0.2	-0.1	98.1	-0.2	-2.2	110.0	0.0	16.3
	June	99.3	-0.2	-0.1	97.8	-0.3	-2.3	110.7	0.6	17.4
	July	99.4	0.1	0.1	97.9	0.1	-2.1	110.8	0.1	16.8
	Aug.	99.3	-0.1	-0.4	97.8	-0.1	-2.0	109.6	-1.1	11.4
	Sep.	99.3	0.0	-0.8	97.6	-0.2	-2.2	111.0	1.3	8.2
	Oct.	99.4	0.1	-0.3	97.3	-0.3	-2.0	114.9	3.5	12.0
	Nov.	99.9	0.5	0.1	97.5	0.2	-1.7	117.7	2.4	13.7
	Dec.	100.3	0.4	0.5	97.7	0.2	-1.5	119.3	1.4	14.9
1997	Jan.	100.8	0.5	0.7	97.7	0.0	-1.3	123.6	3.6	14.6
	Feb.	101.5	0.7	1.6	97.8	0.1	-0.9	127.9	3.5	18.3
	Mar.	101.3	-0.2	1.7	97.9	0.1	-0.6	126.0	-1.5	17.0
	Apr.	103.3	2.0	3.6	99.9	2.0	1.6	127.9	1.5	16.3
	May	102.7	-0.6	3.2	99.8	-0.1	1.7	123.3	-3.6	12.1
	June	102.1	-0.6	2.8	99.7	-0.1	1.9	119.0	-3.5	7.5
	July	101.9	-0.2	2.5	99.8	0.1	1.9	117.1	-1.6	5.7
	Aug.	101.9	0.0	2.6	99.7	-0.1	1.9	118.0	0.8	7.7
	Sep.	102.0	0.1	2.7	99.6	-0.1	2.0	119.4	1.2	7.6
	Oct.	101.4	-0.6	2.0	98.9	-0.7	1.6	119.6	0.2	4.1
	Nov.	101.5	0.1	1.6	98.7	-0.2	1.2	121.8	1.8	3.5
	Dec.	101.8	0.3	1.5	98.7	0.0	1.0	123.9	1.7	3.9
1998	Jan.	101.3	-0.5	0.5	98.5	-0.2	0.8	121.0	-2.3	-2.1
	Feb.	100.1	-1.2	-1.4	98.1	-0.4	0.3	114.2	-5.6	-10.7
	Mar.	99.5	-0.6	-1.8	97.7	-0.4	-0.2	112.5	-1.5	-10.7
	Apr.	99.3	-0.2	-3.9	97.5	-0.2	-2.4	112.5	0.0	-12.0
	May	99.3	0.0	-3.3	97.3	-0.2	-2.5	113.8	1.2	-7.7
	June	99.6	0.3	-2.4	97.2	-0.1	-2.5	116.9	2.7	-1.8
	July	99.5	-0.1	-2.4	97.2	0.0	-2.6	116.3	-0.5	-0.7
	Aug.	99.4	-0.1	-2.5	97.0	-0.2	-2.7	116.6	0.3	-1.2
	Sep.	98.5	-0.9	-3.4	96.7	-0.3	-2.9	111.5	-4.4	-6.6
	Oct.	97.2	-1.3	-4.1	96.0	-0.7	-2.9	105.6	-5.3	-11.7
	Nov.	96.7	-0.5	-4.7	95.7	-0.3	-3.0	103.3	-2.2	-15.2
	Dec.	96.1	-0.6	-5.6	95.5	-0.2	-3.2	100.1	-3.1	-19.2

Note: The yearly percent changes for 1995 calendar year (fiscal year) and monthly percent changes for January 1995 indexes have been calculated from their corresponding 1995 base linked indexes.

## 1.1.(1) Input price index (cont'd)

(1995 average = 100)

Sector classification Aggregated major commodity group		Manufacturing industry			Domestic products			Imports		
		Number of items	Monthly changes	Yearly changes	966	Monthly changes	Yearly changes	266	Monthly changes	Yearly changes
Weight		1,000.000	%	%	877.308	%	%	122.692	%	%
Jan. 1999		95.2	-0.9	-6.0	95.2	-0.3	-3.4	95.7	-4.4	-20.9
Feb.		95.3	0.1	-4.8	95.0	-0.2	-3.2	97.4	1.8	-14.7
Mar.		95.2	-0.1	-4.3	94.8	-0.2	-3.0	98.0	0.6	-12.9
Apr.		95.1	-0.1	-4.2	94.4	-0.4	-3.2	99.7	1.7	-11.4
May		95.5	0.4	-3.8	94.4	0.0	-3.0	103.2	3.5	-9.3
June		95.6	0.1	-4.0	94.4	0.0	-2.9	104.0	0.8	-11.0
July		96.0	0.4	-3.5	94.8	0.4	-2.5	104.6	0.6	-10.1
Aug.		95.9	-0.1	-3.5	94.9	0.1	-2.2	103.4	-1.1	-11.3
Sep.		95.7	-0.2	-2.8	94.8	-0.1	-2.0	102.3	-1.1	-8.3
Oct.		96.0	0.3	-1.2	94.8	0.0	-1.3	104.4	2.1	-1.1
Nov.		96.0	0.0	-0.7	94.8	0.0	-0.9	104.8	0.4	1.5
Dec.		96.0	0.0	-0.1	94.8	0.0	-0.7	104.6	-0.2	4.5
Jan. 2000		96.2	0.2	1.1	94.8	0.0	-0.4	106.4	1.7	11.2
Feb.		97.0	0.8	1.8	95.0	0.2	0.0	111.7	5.0	14.7
Mar.		96.9	-0.1	1.8	95.0	0.0	0.2	110.2	-1.3	12.4
Apr.		96.8	-0.1	1.8	95.1	0.1	0.7	108.6	-1.5	8.9
May		96.9	0.1	1.5	95.1	0.0	0.7	109.6	0.9	6.2
June		96.8	-0.1	1.3	95.1	0.0	0.7	109.1	-0.5	4.9

## 1.1.(1) Input price index (cont'd)

(1995 average = 100)

Sector classification		Agriculture, forestry & fishery	Mining	Foods	Textile products	Pulp, paper & wooden products	Chemical products	Petroleum & coal products	Ceramic, stone & clay products	Iron & steel
Aggregated major commodity group										
Number of items		53	24	172	110	105	162	21	50	63
Weight		57.324	43.557	43.248	25.311	74.577	106.684	18.103	24.515	104.855
C.Y.	1995	100.0	100.0	100.0	100.0	100.0	100.0	100.0	100.0	100.0
	1996	103.0	118.0	104.5	102.6	100.5	98.6	110.2	98.0	96.9
	1997	101.7	132.1	108.2	107.3	100.8	102.8	125.5	98.7	100.1
	1998	96.6	110.8	108.4	103.7	96.9	100.7	114.3	97.2	97.7
	1999	92.3	105.1	103.1	98.5	94.4	98.0	111.1	95.0	93.5
F.Y.	1995	100.3	102.2	100.6	99.9	100.9	99.5	100.8	99.5	98.9
	1996	103.5	125.5	105.4	103.6	100.3	99.1	115.7	97.8	96.9
	1997	99.9	126.2	108.7	107.3	100.1	103.5	124.1	98.8	100.7
	1998	96.1	104.0	107.4	102.0	96.0	99.3	110.4	96.7	96.0
	1999	90.8	114.8	102.2	98.0	94.4	98.9	116.1	94.6	93.7
1995	Jan.	101.7	103.8	100.7	102.9	97.6	100.4	101.1	100.5	101.5
	Feb.	101.8	103.2	100.7	102.3	98.2	100.4	101.9	100.5	102.4
	Mar.	100.4	99.9	99.9	101.0	98.4	100.5	101.4	100.5	102.8
	Apr.	98.7	94.3	99.5	99.5	99.4	100.4	100.1	100.3	101.7
	May	98.5	95.3	99.1	99.2	99.6	100.3	100.1	100.2	100.9
	June	98.0	96.2	99.7	98.7	99.9	100.2	99.7	100.1	100.0
	July	98.3	95.6	99.5	98.1	99.9	99.9	98.3	100.1	99.4
	Aug.	100.0	97.2	100.1	98.5	100.4	99.9	98.2	100.0	98.6
	Sep.	101.2	102.4	99.9	99.7	100.8	99.9	98.9	99.7	98.4
	Oct.	99.8	103.7	99.2	99.8	101.7	99.6	99.7	99.5	98.2
	Nov.	100.7	103.7	100.5	100.0	102.1	99.4	100.0	99.3	98.0
	Dec.	101.2	104.7	101.3	100.3	102.1	99.1	100.9	99.1	98.2
1996	Jan.	101.8	111.1	101.9	101.2	102.4	98.8	103.1	98.9	98.5
	Feb.	102.6	111.6	103.4	101.5	101.6	98.4	104.2	98.6	97.6
	Mar.	102.7	110.1	103.1	101.9	100.8	98.3	106.2	98.5	97.2
	Apr.	103.6	113.9	104.6	102.4	99.8	98.5	108.8	98.3	96.6
	May	104.0	114.6	104.2	102.5	99.5	98.4	108.7	98.2	96.4
	June	103.9	114.1	105.0	102.6	99.7	98.6	109.2	97.6	96.3
	July	103.9	114.9	105.5	102.7	99.8	98.6	109.8	97.6	96.4
	Aug.	102.7	115.0	105.2	102.6	99.8	98.6	110.2	97.6	96.4
	Sep.	102.6	118.1	104.8	102.5	100.1	98.3	111.6	97.6	96.4
	Oct.	102.3	126.2	105.0	102.7	100.5	98.5	113.7	97.6	96.5
	Nov.	102.9	132.4	105.1	103.7	100.7	98.9	116.6	97.6	96.8
	Dec.	103.5	133.6	106.0	104.3	100.8	99.1	120.4	97.6	97.2
1997	Jan.	103.1	139.9	106.1	105.3	101.0	99.8	123.0	97.8	97.4
	Feb.	104.8	145.0	106.6	105.9	100.9	100.3	127.1	97.8	97.8
	Mar.	104.4	138.3	106.8	106.1	100.7	101.0	129.2	97.9	98.1
	Apr.	105.9	137.9	110.2	108.8	102.5	103.9	131.6	99.7	100.1
	May	104.2	131.1	109.0	108.5	102.0	103.6	128.4	99.7	100.7
	June	101.9	127.3	108.9	107.9	101.5	103.6	126.0	99.4	100.8
	July	100.5	124.1	108.7	107.9	101.1	103.4	123.6	99.1	101.5
	Aug.	101.1	123.2	107.8	108.0	100.9	103.6	123.4	98.9	101.5
	Sep.	100.9	125.8	108.1	107.9	100.5	103.8	122.4	98.9	101.2
	Oct.	98.5	127.1	107.5	107.3	99.6	103.6	121.9	98.8	100.9
	Nov.	97.9	131.1	107.9	107.1	99.5	103.5	123.2	98.5	100.7
	Dec.	97.7	134.6	110.2	106.9	99.4	103.7	125.8	98.4	100.8
1998	Jan.	97.0	128.1	109.4	106.6	98.9	103.7	124.6	98.0	100.6
	Feb.	96.7	114.9	108.5	105.8	98.2	103.1	121.9	98.0	99.8
	Mar.	96.2	109.4	108.5	105.3	97.6	102.3	115.9	98.0	99.2
	Apr.	96.0	107.4	108.5	105.3	97.6	101.5	113.5	97.4	98.7
	May	96.5	110.0	109.2	105.0	97.7	101.1	113.9	97.3	98.5
	June	97.2	115.1	111.1	105.1	97.8	101.0	114.6	97.2	98.4
	July	98.0	113.4	111.2	104.3	97.5	100.4	113.4	97.1	97.8
	Aug.	98.2	114.9	108.7	103.8	97.1	100.1	113.0	97.0	97.5
	Sep.	96.7	111.2	108.3	102.5	96.2	99.6	111.2	96.7	96.6
	Oct.	96.1	105.6	106.5	100.9	95.0	98.9	109.6	96.3	95.6
	Nov.	95.7	102.0	105.7	100.3	94.7	98.5	109.7	96.4	94.9
	Dec.	94.8	97.0	105.7	99.8	94.7	98.3	109.7	96.4	94.3



## 1.1.(1) Input price index (cont'd)

(1995 average = 100)

Sector classification										
Aggregated major commodity group	Agriculture, forestry & fishery	Mining	Foods	Textile products	Pulp, paper & wooden products	Chemical products	Petroleum & coal products	Ceramic, stone & clay products	Iron & steel	
Number of items	53	24	172	110	105	162	21	50	63	
Weight	57.324	43.557	43.248	25.311	74.577	106.684	18.103	24.515	104.855	
Jan. 1999	93.8	89.0	104.2	98.9	94.5	98.0	108.2	96.2	93.8	
Feb.	94.7	91.1	104.7	98.9	94.7	97.6	104.7	95.9	93.3	
Mar.	95.3	91.1	104.7	99.1	94.1	97.0	102.9	95.9	93.1	
Apr.	94.8	95.2	104.1	99.2	94.3	96.3	103.0	95.1	92.8	
May	94.7	102.1	104.0	99.6	94.8	96.5	105.3	94.7	93.1	
June	93.6	106.0	104.0	99.6	94.8	96.8	106.8	94.7	93.4	
July	92.4	108.5	103.7	99.7	94.7	97.4	109.5	94.5	94.0	
Aug.	91.5	110.0	103.3	98.8	94.3	97.9	113.8	94.5	94.1	
Sep.	90.4	111.4	102.3	97.9	94.0	98.3	117.3	94.6	93.4	
Oct.	89.0	116.8	101.2	97.6	93.8	100.0	119.9	94.5	93.5	
Nov.	88.9	118.8	100.6	96.8	94.1	100.4	120.7	94.5	93.7	
Dec.	87.9	121.4	100.5	96.0	94.1	100.3	121.3	94.5	94.0	
Jan. 2000	88.0	125.4	100.0	96.3	94.3	100.4	121.3	94.6	93.9	
Feb.	89.6	131.0	101.4	97.1	94.6	101.0	126.0	94.5	93.9	
Mar.	89.1	130.9	100.8	96.8	94.5	101.1	127.8	94.3	94.3	
Apr.	87.9	128.9	100.3	96.9	94.9	102.2	130.1	94.5	94.5	
May	88.2	128.4	100.6	96.9	95.4	102.5	127.9	94.5	94.4	
June	86.7	130.4	101.1	96.5	95.5	102.5	128.5	94.3	94.0	

## 1.1.(1) Input price index (cont'd)

(1995 average = 100)

Sector classification									
Aggregated major commodity group	Non-ferrous metals	Metal products	General machinery	Electrical machinery	Transportation equipment	Precision instruments	Other industrial products	Electricity, gas and heat supply	Water supply and waste disposal services
Number of items	54	53	100	134	9	32	84	4	2
Weight	52.180	40.332	44.296	138.328	89.703	6.008	97.545	30.745	2.689
C.Y. 1995	100.0	100.0	100.0	100.0	100.0	100.0	100.0	100.0	100.0
1996	100.2	97.5	99.8	94.2	97.9	100.7	99.2	96.8	105.0
1997	107.7	97.8	101.3	90.8	98.1	102.5	100.3	100.8	111.3
1998	103.7	97.1	101.4	88.7	97.9	103.7	100.2	96.6	113.8
1999	95.1	95.9	100.1	84.9	97.0	101.3	99.0	94.0	114.0
F.Y. 1995	99.8	99.5	99.9	98.7	99.4	100.0	99.8	99.0	100.9
1996	101.4	97.1	99.8	92.5	97.6	100.8	99.1	97.3	105.8
1997	107.6	98.0	101.7	90.5	98.3	103.1	100.7	100.8	113.1
1998	100.8	96.8	101.1	87.8	97.7	103.3	99.8	95.8	113.9
1999	96.2	95.8	99.8	84.1	96.7	100.7	99.0	93.9	114.0
Jan. 1995	104.5	100.8	100.3	103.2	100.8	101.1	100.2	98.7	99.4
Feb.	103.3	100.5	100.3	102.6	100.8	100.8	100.2	98.7	99.4
Mar.	99.6	100.3	100.1	101.7	100.6	100.0	100.1	98.7	99.4
Apr.	98.1	99.9	100.0	100.2	100.6	99.2	100.1	98.5	99.7
May	96.4	100.0	99.9	100.0	100.6	99.1	100.1	98.5	99.7
June	96.5	99.9	99.9	99.3	100.4	99.1	100.1	98.5	99.7
July	96.7	99.8	99.9	98.9	100.4	99.4	100.0	104.3	99.7
Aug.	100.0	99.8	100.0	99.0	100.0	99.9	100.0	104.3	99.7
Sep.	102.0	99.8	100.0	99.3	99.7	100.2	100.0	104.3	99.7
Oct.	100.9	99.8	100.0	98.8	98.8	100.3	99.8	98.3	101.2
Nov.	101.2	99.8	99.9	98.7	98.8	100.5	99.7	98.5	101.2
Dec.	100.9	99.8	99.8	98.3	98.6	100.3	99.6	98.5	101.2
Jan. 1996	101.4	99.1	99.8	98.1	98.5	100.6	99.5	94.7	102.8
Feb.	101.5	98.3	99.8	97.4	98.5	101.0	99.5	94.7	103.2
Mar.	101.5	98.0	99.8	96.9	98.2	100.8	99.4	94.7	103.2
Apr.	101.8	97.2	99.8	96.2	97.9	100.8	99.3	94.6	105.4
May	102.1	97.2	99.8	95.1	97.8	100.4	99.3	94.6	105.4
June	100.0	97.1	99.8	94.2	98.0	100.6	99.3	94.6	105.4
July	98.5	97.1	99.7	93.6	97.9	100.7	99.1	101.5	105.4
Aug.	98.7	97.1	99.7	92.8	97.8	100.6	99.1	101.5	105.4
Sep.	98.4	97.1	99.7	92.0	97.8	100.6	99.0	101.5	105.4
Oct.	98.1	97.2	99.6	91.5	97.5	100.8	99.0	96.3	105.4
Nov.	99.7	97.2	99.7	91.2	97.3	101.0	99.0	96.3	106.3
Dec.	101.1	97.3	99.8	91.1	97.4	100.7	99.1	96.4	106.3
Jan. 1997	103.4	97.2	99.8	90.9	97.4	100.9	99.0	96.8	106.3
Feb.	106.7	97.0	99.9	90.8	97.4	101.4	99.0	96.8	106.3
Mar.	107.8	96.5	99.9	90.5	97.3	101.2	98.9	96.8	106.3
Apr.	110.8	98.4	101.9	91.9	98.7	103.5	100.8	99.8	111.7
May	110.0	98.1	101.7	91.7	98.5	103.0	100.7	99.8	111.7
June	108.4	98.0	101.7	91.2	98.4	102.5	100.6	99.8	113.4
July	107.5	98.2	101.6	90.7	98.4	102.5	100.6	106.2	113.4
Aug.	108.9	98.0	101.7	90.6	98.4	102.4	100.6	106.2	113.4
Sep.	108.7	98.0	101.7	90.5	98.4	102.8	100.7	106.2	113.4
Oct.	107.7	98.0	101.7	90.4	98.3	102.9	100.7	100.2	113.4
Nov.	106.7	98.1	101.7	90.2	98.2	103.3	100.7	100.2	113.4
Dec.	106.2	98.2	101.7	90.0	98.2	103.7	100.7	100.3	113.4
Jan. 1998	105.9	98.1	101.7	89.7	98.2	104.0	100.7	99.4	113.4
Feb.	104.7	97.7	101.6	89.2	98.1	103.3	100.6	96.5	113.4
Mar.	105.5	97.4	101.6	89.5	98.0	103.4	100.7	95.1	113.4
Apr.	107.4	97.1	101.7	89.4	98.0	103.7	100.7	94.9	113.4
May	107.1	97.0	101.7	89.2	97.9	103.9	100.4	94.9	113.4
June	106.3	97.0	101.6	89.1	98.1	104.5	100.3	94.9	114.0
July	106.4	97.0	101.6	89.0	98.0	104.6	100.0	100.5	114.0
Aug.	106.8	96.9	101.5	89.1	98.0	104.7	100.0	100.5	114.0
Sep.	103.6	96.9	101.3	88.4	97.8	104.2	99.8	100.5	114.0
Oct.	98.5	96.8	100.9	87.6	97.5	103.1	99.6	94.0	114.0
Nov.	97.0	96.7	100.8	87.2	97.4	102.7	99.6	94.0	114.0
Dec.	95.5	96.7	100.7	86.5	97.3	102.4	99.5	94.1	114.0

## 1.1.(1) Input price index (cont'd)

(1995 average = 100)

Sector classification									
Aggregated major commodity group	Non-ferrous metals	Metal products	General machinery	Electrical machinery	Transportation equipment	Precision instruments	Other industrial products	Electricity, gas and heat supply	Water supply and waste disposal services
Number of items	54	53	100	134	9	32	84	4	2
Weight	52.180	40.332	44.296	138.328	89.703	6.008	97.545	30.745	2.689
Jan. 1999	93.0	96.5	100.5	86.0	97.3	101.8	99.4	93.9	114.0
Feb.	94.0	96.4	100.5	86.2	97.3	101.9	99.3	93.8	114.0
Mar.	94.4	96.2	100.5	86.2	97.2	102.0	99.3	93.8	114.0
Apr.	94.1	96.0	100.3	85.8	97.1	101.9	99.1	92.4	114.0
May	95.8	95.8	100.3	85.5	97.1	102.0	99.1	92.4	114.0
June	94.5	95.7	100.2	85.2	97.1	101.9	99.0	92.4	114.0
July	97.0	95.7	100.1	84.9	96.8	101.7	99.0	97.2	114.0
Aug.	95.6	95.6	100.0	84.4	96.8	101.0	98.9	97.2	114.0
Sep.	95.0	95.7	99.8	83.9	96.7	100.6	98.8	97.2	114.0
Oct.	96.7	95.7	99.8	83.8	96.7	100.5	98.8	92.6	114.0
Nov.	95.6	95.8	99.6	83.5	96.7	100.2	98.8	92.6	114.0
Dec.	95.1	95.8	99.5	83.2	96.7	99.7	99.0	92.7	114.0
Jan. 2000	96.4	95.8	99.4	83.0	96.3	99.7	99.1	93.5	114.0
Feb.	100.1	95.8	99.5	83.0	96.4	100.1	99.2	93.4	114.0
Mar.	98.1	95.7	99.4	82.7	96.3	99.6	99.1	93.4	114.0
Apr.	96.6	95.6	99.2	82.5	96.2	99.0	98.9	94.0	114.0
May	98.2	95.5	99.2	82.8	96.0	98.9	98.8	94.0	114.0
June	98.2	95.5	99.1	82.6	95.9	98.8	98.8	94.0	114.0

1.1.(2) Input price index - Indexes of major sector

(1995 average = 100)

Sector classification	Foods	Textile products	Pulp, paper & wooden products	Chemical products	Petroleum & coal products	Ceramic, stone & clay products	Iron & steel	Non-ferrous metals	Metal products
Number of items	543	399	632	619	257	576	417	504	563
Weight	119.413	31.723	65.820	78.034	31.045	26.659	61.985	24.819	45.031
C.Y. 1995	100.0	100.0	100.0	100.0	100.0	100.0	100.0	100.0	100.0
1996	102.4	101.7	100.4	100.5	125.6	99.8	98.3	96.3	97.4
1997	103.7	106.1	101.3	107.0	142.0	102.3	103.0	107.6	100.0
1998	102.3	102.4	96.0	103.1	113.7	100.7	100.7	97.3	98.3
1999	98.5	97.4	93.5	100.2	111.9	97.5	95.0	86.4	94.9
F.Y. 1995	100.3	99.8	100.5	99.6	103.2	99.9	99.3	98.2	99.1
1996	102.8	102.6	100.7	102.0	135.4	100.1	98.5	98.4	97.5
1997	103.6	106.2	100.0	107.3	134.2	102.5	103.7	105.8	100.5
1998	101.7	100.7	95.1	101.2	105.3	99.9	98.8	93.0	97.2
1999	97.6	97.0	93.5	101.8	126.2	97.1	95.1	88.5	94.8
Jan. 1995	100.6	102.3	98.9	100.8	102.7	100.4	101.9	109.8	100.8
Feb.	100.4	101.9	99.6	101.0	103.2	100.3	102.4	107.0	101.2
Mar.	99.7	100.9	99.4	100.6	100.5	100.1	102.2	100.6	101.4
Apr.	99.1	99.9	99.6	100.0	94.7	99.7	100.3	95.9	101.5
May	98.9	99.5	99.5	99.8	96.3	99.5	99.6	92.6	101.1
June	99.3	99.0	99.3	99.7	96.7	99.5	99.1	93.5	100.6
July	99.7	98.6	99.2	99.5	95.0	100.0	98.9	95.7	99.8
Aug.	100.6	98.9	99.9	99.7	95.8	100.2	99.0	100.4	99.3
Sep.	100.8	99.8	100.6	100.1	102.3	100.3	99.2	102.7	99.1
Oct.	99.7	99.6	101.1	99.7	104.6	100.0	98.9	100.3	98.6
Nov.	100.4	99.7	101.3	99.6	103.3	100.1	99.1	101.3	98.4
Dec.	100.8	99.9	101.4	99.5	104.9	100.1	99.6	100.5	98.2
Jan. 1996	100.9	100.5	102.0	99.4	114.6	99.5	100.2	98.8	98.1
Feb.	101.8	100.8	101.2	99.0	115.8	99.6	99.3	98.4	97.6
Mar.	101.7	101.2	100.5	99.2	114.1	99.7	98.7	98.8	97.4
Apr.	102.7	101.6	99.3	99.9	118.7	100.0	98.1	99.8	96.9
May	102.9	101.7	98.9	100.0	120.0	99.5	97.8	100.7	96.8
June	103.1	101.7	99.2	100.3	121.0	99.3	97.8	95.3	96.7
July	103.5	102.0	99.6	101.0	122.7	99.8	98.0	92.2	97.3
Aug.	102.8	101.8	99.6	101.0	123.0	99.8	97.8	92.6	97.5
Sep.	102.5	101.8	100.2	100.8	127.3	99.9	97.6	92.2	97.7
Oct.	102.1	101.8	100.9	101.0	137.8	99.7	97.6	91.9	97.4
Nov.	102.2	102.6	101.6	101.8	145.2	99.9	98.0	95.8	97.6
Dec.	102.8	103.1	101.9	102.6	146.5	100.3	98.8	98.6	97.8
Jan. 1997	102.4	103.9	102.4	104.0	153.1	100.7	99.5	103.6	97.9
Feb.	103.4	104.5	102.6	105.3	159.3	101.1	100.3	108.4	98.1
Mar.	103.5	104.7	102.2	105.8	150.2	101.4	100.7	109.7	98.1
Apr.	106.0	107.5	103.7	109.3	148.1	103.4	102.9	112.4	100.6
May	105.0	107.2	102.8	108.3	139.5	103.1	103.4	111.8	100.5
June	104.2	106.6	101.6	107.7	134.8	102.8	103.2	109.5	100.6
July	103.8	106.8	101.4	107.3	131.0	102.8	104.8	107.5	101.2
Aug.	103.7	107.0	101.2	107.5	130.2	102.7	105.1	108.5	101.1
Sep.	103.9	106.9	100.6	107.6	133.9	102.7	104.9	107.3	101.0
Oct.	102.6	106.2	99.2	106.9	135.9	102.3	103.8	105.5	100.5
Nov.	102.6	106.0	99.0	107.0	141.6	102.2	103.7	104.0	100.4
Dec.	103.6	105.8	98.9	107.7	146.2	102.4	104.2	102.6	100.4
Jan. 1998	103.0	105.6	98.4	107.3	137.7	102.2	104.1	101.4	100.3
Feb.	102.4	104.5	97.2	106.2	120.0	101.7	102.6	98.9	99.8
Mar.	102.2	104.0	96.3	104.8	111.4	101.3	101.6	100.1	99.5
Apr.	102.2	103.7	95.9	103.7	107.7	100.9	101.4	102.1	99.3
May	102.7	103.4	95.9	103.6	111.0	100.9	101.5	101.6	99.0
June	103.5	103.4	96.7	103.6	117.8	100.8	101.9	100.8	98.7
July	103.9	103.0	96.8	103.0	115.2	101.2	102.1	100.9	98.4
Aug.	102.9	102.5	96.8	102.8	117.1	101.2	102.0	101.5	98.2
Sep.	102.2	101.4	95.6	101.9	113.4	100.6	100.5	97.5	97.6
Oct.	101.4	99.8	94.1	100.3	109.0	99.4	98.0	89.9	96.7
Nov.	100.9	99.2	94.0	100.2	105.1	99.2	96.7	87.7	96.5
Dec.	100.5	98.7	93.9	99.9	98.6	99.0	96.1	85.1	96.1

## 1.1.(2) Input price index (cont'd)

(1995 average = 100)

Sector classification	Foods	Textile products	Pulp, paper & wooden products	Chemical products	Petroleum & coal products	Ceramic, stone & clay products	Iron & steel	Non-ferrous metals	Metal products
Number of items	543	399	632	619	257	576	417	504	563
Weight	119.413	31.723	65.820	78.034	31.045	26.659	61.985	24.819	45.031
Jan. 1999	99.5	97.9	93.7	99.3	88.2	98.7	95.4	81.9	95.5
Feb.	100.0	97.8	94.0	98.5	90.4	98.4	95.3	82.9	95.3
Mar.	100.2	97.8	93.6	97.7	90.5	98.3	95.0	83.5	95.1
Apr.	99.7	97.8	93.7	97.1	96.5	97.6	94.6	85.1	94.2
May	99.6	98.0	94.3	97.7	105.9	97.5	94.8	88.2	94.3
June	99.2	98.1	94.4	98.2	113.0	97.0	95.1	86.4	94.2
July	98.7	98.4	94.3	100.0	116.0	97.1	96.2	90.7	94.8
Aug.	98.4	97.8	93.6	100.8	119.8	97.1	96.0	88.8	94.8
Sep.	97.7	97.0	92.9	101.9	122.6	97.1	94.5	88.2	94.9
Oct.	96.6	96.7	92.6	103.4	130.5	96.9	94.1	88.0	95.1
Nov.	96.3	96.1	92.7	103.8	132.8	97.0	94.6	86.8	95.1
Dec.	95.9	95.4	92.7	103.9	136.9	96.8	94.9	86.5	95.1
Jan. 2000	95.6	95.7	93.1	104.1	142.0	96.9	94.8	89.7	95.0
Feb.	96.7	96.4	93.9	105.5	148.6	97.2	95.3	93.2	95.3
Mar.	96.4	96.2	93.7	105.6	149.5	97.1	95.7	90.4	95.3
Apr.	95.8	96.1	93.8	107.2	147.7	97.1	95.7	87.5	95.5
May	96.1	96.2	94.1	107.4	145.8	97.1	95.9	89.6	95.5
June	95.7	95.9	93.9	107.3	149.3	96.8	95.3	89.1	95.4

## 1.1.(2) Input price index (cont'd)

(1995 average = 100)

Sector classification	General machinery	Electrical machinery	Transportation equipment	Precision instruments	Other industrial products
Number of items	660	683	721	617	787
Weight	87.761	169.786	151.951	11.253	94.720
C.Y. 1995	100.0	100.0	100.0	100.0	100.0
1996	98.5	95.6	98.1	97.9	99.5
1997	99.7	94.0	98.7	98.1	101.3
	99.2	92.1	98.0	97.7	99.6
1998	97.2	88.4	96.5	95.1	96.6
F.Y. 1995	99.6	99.0	99.5	99.6	100.1
1996	98.3	94.5	97.9	97.3	99.5
1997	100.1	93.8	98.8	98.4	101.5
1998	98.6	91.2	97.6	97.1	98.6
1999	97.0	87.9	96.4	94.8	96.8
Jan. 1995	100.6	102.6	100.7	101.3	99.7
Feb.	100.6	102.1	100.7	101.1	99.7
Mar.	100.5	101.3	100.6	100.5	99.7
Apr.	100.2	100.1	100.5	99.7	99.9
May	100.1	99.8	100.4	99.6	100.0
June	99.9	99.3	100.2	99.3	99.9
July	99.8	99.1	100.2	99.5	100.0
Aug.	99.8	99.3	99.9	99.8	100.2
Sep.	99.9	99.6	99.8	100.0	100.3
Oct.	99.6	99.1	99.1	99.7	100.1
Nov.	99.5	99.0	99.0	99.8	100.4
Dec.	99.4	98.7	98.9	99.6	100.2
Jan. 1996	99.3	98.6	98.8	99.6	100.1
Feb.	99.0	98.0	98.7	99.5	99.9
Mar.	98.9	97.6	98.4	99.1	99.8
Apr.	98.7	97.0	98.2	98.7	99.6
May	98.5	96.2	98.1	98.1	99.4
June	98.3	95.5	98.1	97.7	99.3
July	98.4	95.2	98.1	97.6	99.3
Aug.	98.3	94.7	98.0	97.3	99.2
Sep.	98.2	94.1	97.9	97.0	99.2
Oct.	98.1	93.7	97.7	96.9	99.1
Nov.	98.2	93.5	97.6	96.9	99.4
Dec.	98.3	93.5	97.7	96.8	99.6
Jan. 1997	98.3	93.5	97.7	96.8	99.7
Feb.	98.4	93.6	97.8	97.1	99.8
Mar.	98.4	93.4	97.7	96.9	100.0
Apr.	100.3	95.1	99.3	98.9	102.1
May	100.2	94.8	99.2	98.6	101.8
June	100.1	94.3	99.0	98.2	101.8
July	100.3	94.1	99.0	98.3	101.8
Aug.	100.2	94.1	99.0	98.3	101.9
Sep.	100.3	94.1	99.0	98.4	101.9
Oct.	100.1	93.8	98.8	98.3	101.5
Nov.	100.0	93.5	98.7	98.4	101.4
Dec.	100.0	93.5	98.7	98.5	101.3
Jan. 1998	99.9	93.2	98.6	98.5	101.2
Feb.	99.7	92.7	98.4	97.9	100.8
Mar.	99.6	92.9	98.3	98.1	100.5
Apr.	99.6	93.0	98.3	98.2	100.4
May	99.5	92.6	98.1	98.1	100.3
June	99.4	92.5	98.1	98.2	100.0
July	99.4	92.6	98.1	98.3	99.8
Aug.	99.3	92.6	98.1	98.4	99.6
Sep.	98.9	91.8	97.9	97.8	99.1
Oct.	98.4	90.7	97.3	96.8	98.0
Nov.	98.2	90.3	97.2	96.5	97.6
Dec.	97.9	89.7	97.1	96.1	97.4

## 1.1.(2) Input price index (cont'd)

(1995 average = 100)

Sector classification	General machinery	Electrical machinery	Transportation equipment	Precision instruments	Other industrial products
Number of items	660	683	721	617	787
Weight	87.761	169.786	151.951	11.253	94.720
Jan. 1999	97.7	89.2	97.0	95.6	97.2
Feb.	97.6	89.4	96.9	95.7	97.1
Mar.	97.4	89.4	96.8	95.7	96.6
Apr.	97.2	89.0	96.6	95.5	96.2
May	97.2	88.8	96.6	95.6	96.3
June	97.1	88.5	96.5	95.3	96.2
July	97.2	88.5	96.4	95.4	96.2
Aug.	97.1	88.0	96.4	94.9	96.2
Sep.	97.0	87.6	96.3	94.6	96.1
Oct.	97.0	87.7	96.4	94.7	96.8
Nov.	96.9	87.5	96.3	94.5	97.2
Dec.	96.8	87.2	96.3	94.1	97.1
Jan. 2000	96.7	87.1	96.1	94.0	97.3
Feb.	96.9	87.5	96.2	94.5	97.9
Mar.	96.8	87.1	96.1	94.1	97.7
Apr.	96.7	86.9	96.0	93.8	98.0
May	96.7	87.2	95.9	93.9	98.1
June	96.6	87.1	95.8	93.8	98.2

## 1.2. Output price index - Indexes of manufacturing industry sector and aggregated major commodity group (major sector)

(1995 average = 100)

Sector classification		Manufacturing industry			Domestic products			Exports		
Aggregated major commodity group = Major sector		1,253	Monthly changes	Yearly changes	1,038	Monthly changes	Yearly changes	215	Monthly changes	Yearly changes
Number of items		1,000.000	%	%	894.732	%	%	105.268	%	%
Weight		1,000.000	%	%	894.732	%	%	105.268	%	%
C.Y.	1995	100.0	--	-0.9	100.0	--	-0.8	100.0	--	-2.7
	1996	99.3	--	-0.7	98.6	--	-1.4	104.9	--	4.9
	1997	100.3	--	1.0	99.5	--	0.9	106.8	--	1.8
	1998	99.3	--	-1.0	98.2	--	-1.3	108.6	--	1.7
	1999	97.0	--	-2.3	96.9	--	-1.3	97.7	--	-10.0
F.Y.	1995	99.8	--	-0.9	99.6	--	-1.0	101.4	--	-0.1
	1996	99.2	--	-0.6	98.5	--	-1.1	105.3	--	3.8
	1997	100.4	--	1.2	99.6	--	1.1	107.0	--	1.6
	1998	98.6	--	-1.8	97.7	--	-1.9	106.3	--	-0.7
	1999	96.9	--	-1.7	97.0	--	-0.7	96.1	--	-9.6
1995	Jan.	100.9	0.4	-1.2	100.7	0.3	-0.9	102.5	0.7	-5.3
	Feb.	100.8	-0.1	-0.8	100.7	0.0	-0.7	101.7	-0.8	-3.1
	Mar.	100.2	-0.6	-1.2	100.5	-0.2	-0.6	97.7	-3.9	-6.4
	Apr.	99.7	-0.5	-1.4	100.4	-0.1	-0.5	93.5	-4.3	-9.6
	May	99.6	-0.1	-1.5	100.2	-0.2	-0.6	94.0	0.5	-9.1
	June	99.4	-0.2	-1.6	100.1	-0.1	-0.7	93.9	-0.1	-8.7
	July	99.5	0.1	-1.1	99.8	-0.3	-0.9	96.2	2.4	-4.4
	Aug.	99.8	0.3	-0.8	99.7	-0.1	-1.0	101.0	5.0	-0.1
	Sep.	100.1	0.3	-0.4	99.6	-0.1	-1.0	104.6	3.6	3.7
	Oct.	100.0	-0.1	-0.4	99.5	-0.1	-0.9	104.8	0.2	3.8
	Nov.	100.1	0.1	-0.2	99.5	0.0	-0.9	105.4	0.6	4.6
	Dec.	100.0	-0.1	-0.5	99.4	-0.1	-1.0	105.0	-0.4	3.1
1996	Jan.	100.1	0.1	-0.8	99.3	-0.1	-1.4	106.9	1.8	4.3
	Feb.	99.9	-0.2	-0.9	99.2	-0.1	-1.5	106.1	-0.7	4.3
	Mar.	99.7	-0.2	-0.5	99.0	-0.2	-1.5	105.7	-0.4	8.2
	Apr.	99.6	-0.1	-0.1	98.8	-0.2	-1.6	106.0	0.3	13.4
	May	99.3	-0.3	-0.3	98.8	0.0	-1.4	104.0	-1.9	10.6
	June	99.2	-0.1	-0.2	98.6	-0.2	-1.5	104.7	0.7	11.5
	July	99.1	-0.1	-0.4	98.4	-0.2	-1.4	104.4	-0.3	8.5
	Aug.	98.8	-0.3	-1.0	98.3	-0.1	-1.4	103.1	-1.2	2.1
	Sep.	98.8	0.0	-1.3	98.3	0.0	-1.3	103.8	0.7	-0.8
	Oct.	98.9	0.1	-1.1	98.2	-0.1	-1.3	104.7	0.9	-0.1
	Nov.	98.9	0.0	-1.2	98.3	0.1	-1.2	104.2	-0.5	-1.1
	Dec.	99.2	0.3	-0.8	98.5	0.2	-0.9	104.7	0.5	-0.3
1997	Jan.	99.3	0.1	-0.8	98.4	-0.1	-0.9	106.2	1.4	-0.7
	Feb.	99.6	0.3	-0.3	98.5	0.1	-0.7	109.1	2.7	2.8
	Mar.	99.6	0.0	-0.1	98.6	0.1	-0.4	108.7	-0.4	2.8
	Apr.	101.4	1.8	1.8	100.4	1.8	1.6	110.0	1.2	3.8
	May	100.9	-0.5	1.6	100.2	-0.2	1.4	106.4	-3.3	2.3
	June	100.4	-0.5	1.2	100.1	-0.1	1.5	102.9	-3.3	-1.7
	July	100.3	-0.1	1.2	100.0	-0.1	1.6	103.4	0.5	-1.0
	Aug.	100.3	0.0	1.5	99.7	-0.3	1.4	104.7	1.3	1.6
	Sep.	100.4	0.1	1.6	99.6	-0.1	1.3	106.3	1.5	2.4
	Oct.	100.1	-0.3	1.2	99.4	-0.2	1.2	106.2	-0.1	1.4
	Nov.	100.3	0.2	1.4	99.3	-0.1	1.0	108.1	1.8	3.7
	Dec.	100.6	0.3	1.4	99.4	0.1	0.9	110.1	1.9	5.2
1998	Jan.	100.5	-0.1	1.2	99.4	0.0	1.0	110.0	-0.1	3.6
	Feb.	100.0	-0.5	0.4	99.1	-0.3	0.6	107.7	-2.1	-1.3
	Mar.	99.7	-0.3	0.1	98.7	-0.4	0.1	108.7	0.9	0.0
	Apr.	99.6	-0.1	-1.8	98.4	-0.3	-2.0	109.8	1.0	-0.2
	May	99.6	0.0	-1.3	98.3	-0.1	-1.9	111.0	1.1	4.3
	June	99.9	0.3	-0.5	98.3	0.0	-1.8	113.7	2.4	10.5
	July	99.7	-0.2	-0.6	98.2	-0.1	-1.8	113.0	-0.6	9.3
	Aug.	99.8	0.1	-0.5	98.0	-0.2	-1.7	114.5	1.3	9.4
	Sep.	99.1	-0.7	-1.3	97.9	-0.1	-1.7	109.3	-4.5	2.8
	Oct.	98.2	-0.9	-1.9	97.6	-0.3	-1.8	103.2	-5.6	-2.8
	Nov.	97.9	-0.3	-2.4	97.4	-0.2	-1.9	102.0	-1.2	-5.6
	Dec.	97.7	-0.2	-2.9	97.4	0.0	-2.0	100.3	-1.7	-8.9

Note: The yearly percent changes for 1995 calendar year (fiscal year) and monthly percent changes for January 1995 indexes have been calculated from their corresponding 1995 base linked indexes.



## 1.2. Output price index (cont'd)

(1995 average = 100)

Sector classification		Manufacturing industry								
Aggregated major commodity group = Major sector					Domestic products			Exports		
Number of items		1,253	Monthly changes	Yearly changes	1,038	Monthly changes	Yearly changes	215	Monthly changes	Yearly changes
Weight		1,000.000	%	%	894.732	%	%	105.268	%	%
Jan.	1999	97.2	-0.5	-3.3	97.1	-0.3	-2.3	98.1	-2.2	-10.8
Feb.		97.2	0.0	-2.8	96.9	-0.2	-2.2	99.8	1.7	-7.3
Mar.		97.2	0.0	-2.5	96.7	-0.2	-2.0	100.8	1.0	-7.3
Apr.		97.0	-0.2	-2.6	96.6	-0.1	-1.8	100.9	0.1	-8.1
May		97.2	0.2	-2.4	96.7	0.1	-1.6	101.7	0.8	-8.4
June		97.2	0.0	-2.7	96.8	0.1	-1.5	100.9	-0.8	-11.3
July		97.1	-0.1	-2.6	96.8	0.0	-1.4	100.1	-0.8	-11.4
Aug.		96.9	-0.2	-2.9	96.9	0.1	-1.1	96.8	-3.3	-15.5
Sep.		96.6	-0.3	-2.5	97.0	0.1	-0.9	93.8	-3.1	-14.2
Oct.		96.7	0.1	-1.5	97.1	0.1	-0.5	94.0	0.2	-8.9
Nov.		96.7	0.0	-1.2	97.1	0.0	-0.3	93.3	-0.7	-8.5
Dec.		96.6	-0.1	-1.1	97.1	0.0	-0.3	92.0	-1.4	-8.3
Jan.	2000	96.6	0.0	-0.6	97.1	0.0	0.0	92.3	0.3	-5.9
Feb.		97.0	0.4	-0.2	97.2	0.1	0.3	94.8	2.7	-5.0
Mar.		96.8	-0.2	-0.4	97.3	0.1	0.6	92.8	-2.1	-7.9
Apr.		96.8	0.0	-0.2	97.4	0.1	0.8	91.9	-1.0	-8.9
May		96.8	0.0	-0.4	97.2	-0.2	0.5	93.0	1.2	-8.6
June		96.8	0.0	-0.4	97.3	0.1	0.5	92.2	-0.9	-8.6

## 1.2. Output price index (cont'd)

(1995 average = 100)

Sector classification										
Aggregated major commodity group = Major sector		Foods	Textile products	Pulp, paper & wooden products	Chemical products	Petroleum & coal products	Ceramic, stone & clay products	Iron & steel	Non-ferrous metals	Metal products
Number of items		139	87	96	181	19	58	77	45	62
Weight		114.650	36.422	63.492	89.961	36.328	34.660	56.819	21.247	44.674
C.Y.	1995	100.0	100.0	100.0	100.0	100.0	100.0	100.0	100.0	100.0
	1996	101.1	100.3	100.3	98.8	107.1	99.2	98.1	99.3	98.9
	1997	102.8	102.7	100.9	100.8	114.8	100.3	101.0	104.8	99.7
	1998	103.5	102.2	97.9	99.4	108.2	99.5	98.8	101.8	99.3
	1999	104.2	100.6	96.5	97.3	110.0	97.9	93.9	94.3	97.7
F.Y.	1995	100.2	99.9	100.3	99.9	100.6	99.8	99.3	99.8	99.8
	1996	101.2	100.6	100.4	98.8	110.2	99.1	98.2	99.9	98.7
	1997	103.3	103.2	100.4	101.1	114.0	100.5	101.5	104.9	100.0
	1998	103.8	101.8	97.3	98.4	105.7	99.3	97.1	99.5	98.9
	1999	104.2	100.3	96.5	97.8	115.0	97.4	93.8	94.6	97.5
1995	Jan.	100.2	100.9	99.1	100.0	100.9	100.3	100.9	102.1	100.4
	Feb.	100.0	100.7	99.6	100.0	101.1	100.3	101.4	101.6	100.3
	Mar.	100.0	100.3	99.7	99.9	101.2	100.2	101.6	99.9	100.2
	Apr.	100.1	100.1	100.3	99.9	100.4	100.0	100.5	99.6	99.9
	May	100.0	99.9	100.1	100.0	99.6	100.0	100.2	98.5	99.8
	June	100.1	99.8	100.0	100.0	99.7	99.8	99.8	98.5	99.7
	July	99.8	99.5	99.9	99.9	99.1	99.9	99.4	97.8	99.7
	Aug.	99.9	99.5	99.8	100.1	98.4	100.1	99.2	99.7	99.8
	Sep.	99.7	99.8	99.9	100.4	98.8	100.0	99.5	101.1	100.0
	Oct.	99.7	99.8	100.4	100.1	100.1	99.9	99.5	100.4	100.0
	Nov.	100.1	99.9	100.5	100.0	100.4	99.9	99.2	100.6	100.0
	Dec.	100.5	99.9	100.6	99.8	100.4	99.7	98.9	100.4	100.1
1996	Jan.	100.7	100.0	100.8	99.8	101.3	99.6	99.1	100.6	99.7
	Feb.	100.8	100.0	100.7	99.5	103.7	99.4	98.5	100.5	99.3
	Mar.	100.4	100.2	100.4	99.4	105.4	99.3	98.3	100.4	99.1
	Apr.	101.0	100.3	99.9	98.9	105.3	99.4	97.9	100.5	98.7
	May	101.1	100.3	99.8	98.7	106.5	99.3	97.6	100.7	98.7
	June	101.0	100.4	99.8	98.7	107.2	98.9	97.8	99.1	98.7
	July	101.2	100.4	99.8	98.6	106.6	99.0	97.7	97.9	98.6
	Aug.	101.2	100.4	99.9	98.4	107.3	98.9	97.7	98.0	98.6
	Sep.	101.4	100.4	100.1	98.3	107.9	98.9	97.9	97.7	98.6
	Oct.	101.2	100.4	100.5	98.4	108.8	99.2	98.2	97.5	98.7
	Nov.	101.1	100.6	100.9	98.6	111.3	99.2	98.2	98.7	98.7
	Dec.	101.6	100.7	101.0	98.7	113.8	99.1	98.4	99.9	98.8
1997	Jan.	101.2	100.9	101.1	99.1	113.2	99.1	98.8	101.4	98.7
	Feb.	101.3	101.2	100.8	99.5	115.7	99.2	99.2	103.6	98.8
	Mar.	101.2	101.3	100.6	99.7	118.3	99.3	99.1	104.1	98.5
	Apr.	103.6	103.3	102.3	101.9	118.1	101.1	101.2	107.2	100.3
	May	103.6	103.2	102.0	101.4	116.8	101.0	101.2	106.7	100.1
	June	103.7	103.2	101.7	101.1	115.2	100.9	101.0	105.9	100.0
	July	103.6	103.3	101.3	100.9	114.6	100.7	101.8	105.5	100.1
	Aug.	103.3	103.3	100.9	101.0	112.4	100.6	102.0	105.9	100.0
	Sep.	103.2	103.3	100.6	101.2	112.2	100.6	102.0	105.7	100.0
	Oct.	102.7	103.3	99.9	101.0	112.5	100.4	101.7	104.7	100.0
	Nov.	102.7	103.2	99.6	101.1	113.4	100.3	101.8	103.8	100.0
	Dec.	103.6	103.1	99.5	101.3	115.5	100.3	102.0	103.6	100.1
1998	Jan.	103.3	103.1	99.4	101.3	116.0	99.9	101.7	103.6	100.0
	Feb.	103.2	102.9	99.0	100.8	113.6	99.8	100.8	102.7	99.7
	Mar.	103.0	102.7	98.4	100.4	108.1	99.8	100.5	103.0	99.6
	Apr.	102.9	102.6	98.1	99.8	105.9	99.6	100.3	104.2	99.4
	May	103.2	102.4	98.1	99.7	105.4	99.6	100.1	103.7	99.4
	June	103.9	102.5	98.0	99.8	106.8	99.5	100.1	103.4	99.4
	July	103.9	102.4	97.9	99.4	107.6	99.6	99.3	103.5	99.3
	Aug.	103.6	102.3	97.7	99.3	107.1	99.7	99.0	103.7	99.3
	Sep.	103.9	101.9	97.4	98.7	107.5	99.4	97.6	101.7	99.1
	Oct.	103.5	101.5	96.9	98.1	107.2	99.1	96.1	98.4	98.9
	Nov.	103.5	101.3	96.7	97.7	106.8	99.0	95.6	97.3	98.8
	Dec.	104.5	101.2	96.7	97.6	105.8	99.0	94.9	96.2	98.8

## 1.2. Output price index (cont'd)

(1995 average = 100)

Sector classification		Foods	Textile products	Pulp, paper & wooden	Chemical products	Petroleum & coal products	Ceramic, stone & clay	Iron & steel	Non-ferrous metals	Metal products
Aggregated major commodity group	Major sector									
Number of items		139	87	96	181	19	58	77	45	62
Weight		114.650	36.422	63.492	89.961	36.328	34.660	56.819	21.247	44.674
Jan.	1999	104.1	101.0	96.7	97.3	104.3	98.9	94.2	93.9	98.5
Feb.		104.2	101.0	96.7	97.1	102.4	98.8	94.0	94.2	98.1
Mar.		104.2	101.0	96.3	96.8	101.9	98.8	93.9	94.0	98.0
Apr.		104.1	100.7	96.4	96.4	103.2	98.2	93.7	93.1	97.9
May		104.2	100.8	96.6	96.5	107.2	97.8	93.9	94.3	97.8
June		104.4	100.8	96.6	96.7	109.3	97.8	94.0	93.3	97.7
July		104.3	100.8	96.4	96.9	109.8	97.6	94.2	95.4	97.7
Aug.		104.4	100.6	96.4	97.0	113.4	97.4	93.9	94.6	97.6
Sep.		104.3	100.3	96.2	97.2	114.8	97.4	93.6	94.1	97.5
Oct.		104.0	100.2	96.3	98.4	117.0	97.3	93.7	95.5	97.2
Nov.		104.0	100.1	96.5	98.6	117.9	97.3	93.6	94.7	97.2
Dec.		104.2	99.8	96.5	98.5	119.3	97.3	93.5	94.2	97.3
Jan.	2000	104.1	99.8	96.5	98.6	120.5	97.2	93.5	94.6	97.2
Feb.		104.2	100.0	96.5	99.2	122.2	97.0	94.0	96.2	97.3
Mar.		104.2	99.8	96.6	99.2	125.5	96.9	93.9	95.0	97.1
Apr.		104.4	99.6	96.8	99.6	127.2	97.0	94.0	94.7	97.1
May		104.5	99.7	96.9	99.7	123.7	97.0	94.2	95.8	97.1
June		104.7	99.6	97.0	99.5	127.7	96.9	94.0	95.6	97.0

## 1.2. Output price index (cont'd)

(1995 average = 100)

Sector classification		General machinery	Electrical machinery	Transportation equipment	Precision instruments	Other industrial products
Aggregated major commodity group	Major sector					
Number of items		143	177	38	41	90
Weight		82.873	179.764	116.907	13.602	108.601
C.Y.	1995	100.0	100.0	100.0	100.0	100.0
	1996	100.2	95.4	100.3	100.8	99.7
	1997	101.6	92.3	101.1	102.0	101.0
	1998	101.8	90.2	102.0	102.5	101.2
	1999	99.5	85.6	98.8	99.3	100.2
F.Y.	1995	100.0	99.1	100.0	100.0	100.0
	1996	100.3	94.0	100.2	101.0	99.7
	1997	102.0	91.8	101.5	102.2	101.5
	1998	101.3	89.2	101.4	101.7	101.0
	1999	99.1	84.6	98.2	98.8	100.1
1995	Jan.	100.4	103.1	100.8	101.4	100.1
	Feb.	100.4	102.5	100.7	101.1	100.1
	Mar.	99.9	100.6	100.0	100.0	99.9
	Apr.	99.5	98.9	99.0	98.8	99.8
	May	99.6	98.8	99.1	98.9	99.9
	June	99.5	98.4	99.0	98.6	99.9
	July	99.6	98.8	99.4	98.9	99.9
	Aug.	100.0	99.5	100.2	99.7	100.0
	Sep.	100.3	100.2	100.7	100.5	100.2
	Oct.	100.4	100.0	100.2	100.6	100.1
	Nov.	100.3	99.8	100.5	100.9	100.0
	Dec.	100.2	99.4	100.4	100.6	100.0
1996	Jan.	100.3	99.4	100.8	101.1	99.9
	Feb.	100.3	98.5	100.7	101.0	99.9
	Mar.	100.3	97.6	100.5	100.8	99.9
	Apr.	100.3	97.2	100.4	100.8	99.8
	May	100.1	96.0	100.0	100.4	99.8
	June	100.2	95.3	100.3	100.7	99.8
	July	100.2	94.7	100.3	100.7	99.6
	Aug.	100.1	93.8	100.1	100.5	99.5
	Sep.	100.1	93.5	100.1	100.6	99.4
	Oct.	100.2	93.2	100.1	100.9	99.5
	Nov.	100.2	92.7	99.9	101.0	99.6
	Dec.	100.3	92.6	100.0	100.9	99.7
1997	Jan.	100.5	92.7	100.3	101.3	99.7
	Feb.	100.8	93.2	100.7	101.9	99.8
	Mar.	100.7	92.8	100.6	101.7	99.7
	Apr.	102.4	94.0	102.1	103.0	101.6
	May	102.0	92.9	101.3	102.1	101.4
	June	101.6	91.7	100.5	101.2	101.3
	July	101.6	91.6	100.6	101.3	101.3
	Aug.	101.7	91.6	100.8	101.4	101.5
	Sep.	102.0	91.8	101.2	101.8	101.5
	Oct.	102.0	91.5	101.2	102.1	101.4
	Nov.	102.1	91.7	101.7	102.6	101.5
	Dec.	102.3	91.8	102.1	103.1	101.6
1998	Jan.	102.2	91.7	102.2	103.0	101.6
	Feb.	102.0	90.9	101.8	102.5	101.4
	Mar.	102.0	90.9	102.2	102.8	101.5
	Apr.	102.2	90.8	102.4	102.9	101.6
	May	102.3	90.8	102.7	103.1	101.5
	June	102.3	91.3	103.4	103.9	101.4
	July	102.2	91.1	103.0	103.6	101.2
	Aug.	102.3	91.4	103.3	104.1	101.3
	Sep.	101.7	90.1	102.2	102.7	101.0
	Oct.	101.0	88.4	100.6	100.7	100.8
	Nov.	100.6	87.9	100.2	100.4	100.7
	Dec.	100.4	87.4	99.7	99.9	100.6

## 1.2. Output price index (cont'd)

(1995 average = 100)

Sector classification		General machinery	Electrical machinery	Transportation equipment	Precision instruments	Other industrial
Aggregated major commodity group	Major sector					
Number of items		143	177	38	41	90
Weight		82.873	179.764	116.907	13.602	108.601
Jan.	1999	100.1	86.7	99.3	99.3	100.5
Feb.		100.1	87.0	99.7	99.9	100.5
Mar.		100.1	87.0	99.9	100.2	100.5
Apr.		100.0	86.6	100.0	100.4	100.4
May		99.9	86.5	100.1	100.7	100.4
June		99.8	86.2	99.7	100.2	100.3
July		99.7	86.0	99.2	100.0	100.2
Aug.		99.4	85.1	98.4	99.0	100.0
Sep.		99.0	84.4	97.4	98.1	99.9
Oct.		98.9	84.1	97.5	98.0	99.8
Nov.		98.6	83.8	97.2	97.8	99.9
Dec.		98.4	83.4	96.7	97.5	99.9
Jan.	2000	98.5	82.9	97.1	97.8	100.0
Feb.		98.7	83.3	97.6	98.4	100.2
Mar.		98.5	82.6	97.1	97.9	100.1
Apr.		98.3	82.4	96.6	97.4	100.0
May		98.4	82.5	96.6	97.4	100.0
June		98.1	82.1	96.4	97.0	100.0

## 1.3. Output/ Input price ratio index (Output price index / Input price index \* 100)

(1995 average = 100)

Sector classification	Manufacturing industry			Foods	Textile products	Pulp, paper & wooden products	Chemical products	Petroleum & coal products	Ceramic, stone & clay products
	Monthly changes	Yearly changes							
	%points	%points							
C.Y. 1995	100.0	--	0.0	100.0	100.0	100.0	100.0	100.0	100.0
1996	99.7	--	-0.3	98.7	98.6	99.9	98.3	85.3	99.4
1997	98.4	--	-1.3	99.1	96.8	99.6	94.2	80.8	98.0
1998	100.4	--	2.0	101.2	99.8	102.0	96.4	95.2	98.8
1999	101.5	--	1.1	105.8	103.3	103.2	97.1	98.3	100.4
F.Y. 1995	100.1	--	0.2	99.9	100.1	99.8	100.3	97.5	99.9
1996	99.2	--	-0.9	98.4	98.1	99.7	96.9	81.4	99.0
1997	98.8	--	-0.4	99.7	97.2	100.4	94.2	84.9	98.0
1998	101.0	--	2.2	102.1	101.1	102.3	97.2	100.4	99.4
1999	100.9	--	-0.1	106.8	103.4	103.2	96.1	91.1	100.3
Jan. 1995	99.7	0.1	-0.6	99.6	98.6	100.2	99.2	98.2	99.9
Feb.	99.6	-0.1	-0.6	99.6	98.8	100.0	99.0	98.0	100.0
Mar.	99.6	0.0	-0.7	100.3	99.4	100.3	99.3	100.7	100.1
Apr.	99.9	0.3	-0.4	101.0	100.2	100.7	99.9	106.0	100.3
May	100.0	0.1	-0.2	101.1	100.4	100.6	100.2	103.4	100.5
June	100.0	0.0	-0.1	100.8	100.8	100.7	100.3	103.1	100.3
July	100.2	0.2	0.4	100.1	100.9	100.7	100.4	104.3	99.9
Aug.	100.1	-0.1	0.4	99.3	100.6	99.9	100.4	102.7	99.9
Sep.	100.0	-0.1	0.3	98.9	100.0	99.3	100.3	96.6	99.7
Oct.	100.3	0.3	0.3	100.0	100.2	99.3	100.4	95.7	99.9
Nov.	100.3	0.0	0.4	99.7	100.2	99.2	100.4	97.2	99.8
Dec.	100.2	-0.1	0.6	99.7	100.0	99.2	100.3	95.7	99.6
Jan. 1996	100.0	-0.2	0.3	99.8	99.5	98.8	100.4	88.4	100.1
Feb.	100.0	0.0	0.4	99.0	99.2	99.5	100.5	89.6	99.8
Mar.	100.1	0.1	0.5	98.7	99.0	99.9	100.2	92.4	99.6
Apr.	99.9	-0.2	0.0	98.3	98.7	100.6	99.0	88.7	99.4
May	99.8	-0.1	-0.2	98.3	98.6	100.9	98.7	88.8	99.8
June	99.9	0.1	-0.1	98.0	98.7	100.6	98.4	88.6	99.6
July	99.7	-0.2	-0.5	97.8	98.4	100.2	97.6	86.9	99.2
Aug.	99.5	-0.2	-0.6	98.4	98.6	100.3	97.4	87.2	99.1
Sep.	99.5	0.0	-0.5	98.9	98.6	99.9	97.5	84.8	99.0
Oct.	99.5	0.0	-0.8	99.1	98.6	99.6	97.4	79.0	99.5
Nov.	99.0	-0.5	-1.3	98.9	98.1	99.3	96.9	76.7	99.3
Dec.	98.9	-0.1	-1.3	98.8	97.7	99.1	96.2	77.7	98.8
Jan. 1997	98.5	-0.4	-1.5	98.8	97.1	98.7	95.3	73.9	98.4
Feb.	98.1	-0.4	-1.9	98.0	96.8	98.2	94.5	72.6	98.1
Mar.	98.3	0.2	-1.8	97.8	96.8	98.4	94.2	78.8	97.9
Apr.	98.2	-0.1	-1.7	97.7	96.1	98.6	93.2	79.7	97.8
May	98.2	0.0	-1.6	98.7	96.3	99.2	93.6	83.7	98.0
June	98.3	0.1	-1.6	99.5	96.8	100.1	93.9	85.5	98.2
July	98.4	0.1	-1.3	99.8	96.7	99.9	94.0	87.5	98.0
Aug.	98.4	0.0	-1.1	99.6	96.5	99.7	94.0	86.3	98.0
Sep.	98.4	0.0	-1.1	99.3	96.6	100.0	94.1	83.8	98.0
Oct.	98.7	0.3	-0.8	100.1	97.3	100.7	94.5	82.8	98.1
Nov.	98.8	0.1	-0.2	100.1	97.4	100.6	94.5	80.1	98.1
Dec.	98.8	0.0	-0.1	100.0	97.4	100.6	94.1	79.0	97.9
Jan. 1998	99.2	0.4	0.7	100.3	97.6	101.0	94.4	84.2	97.7
Feb.	99.9	0.7	1.8	100.8	98.5	101.9	94.9	94.7	98.1
Mar.	100.2	0.3	1.9	100.8	98.8	102.2	95.8	97.0	98.5
Apr.	100.3	0.1	2.1	100.7	98.9	102.3	96.2	98.3	98.7
May	100.3	0.0	2.1	100.5	99.0	102.3	96.2	95.0	98.7
June	100.3	0.0	2.0	100.4	99.1	101.3	96.3	90.7	98.7
July	100.2	-0.1	1.8	100.0	99.4	101.1	96.5	93.4	98.4
Aug.	100.4	0.2	2.0	100.7	99.8	100.9	96.6	91.5	98.5
Sep.	100.6	0.2	2.2	101.7	100.5	101.9	96.9	94.8	98.8
Oct.	101.0	0.4	2.3	102.1	101.7	103.0	97.8	98.3	99.7
Nov.	101.2	0.2	2.4	102.6	102.1	102.9	97.5	101.6	99.8
Dec.	101.7	0.5	2.9	104.0	102.5	103.0	97.7	107.3	100.0
Jan. 1999	102.1	0.4	2.9	104.6	103.2	103.2	98.0	118.3	100.2
Feb.	102.0	-0.1	2.1	104.2	103.3	102.9	98.6	113.3	100.4
Mar.	102.1	0.1	1.9	104.0	103.3	102.9	99.1	112.6	100.5
Apr.	102.0	-0.1	1.7	104.4	103.0	102.9	99.3	106.9	100.6
May	101.8	-0.2	1.5	104.6	102.9	102.4	98.8	101.2	100.3
June	101.7	-0.1	1.4	105.2	102.8	102.3	98.5	96.7	100.8
July	101.1	-0.6	0.9	105.7	102.4	102.2	96.9	94.7	100.5
Aug.	101.0	-0.1	0.6	106.1	102.9	103.0	96.2	94.7	100.3
Sep.	100.9	-0.1	0.3	106.8	103.4	103.6	95.4	93.6	100.3
Oct.	100.7	-0.2	-0.3	107.7	103.6	104.0	95.2	89.7	100.4
Nov.	100.7	0.0	-0.5	108.0	104.2	104.1	95.0	88.8	100.3
Dec.	100.6	-0.1	-1.1	108.7	104.6	104.1	94.8	87.1	100.5
Jan. 2000	100.4	-0.2	-1.7	108.9	104.3	103.7	94.7	84.9	100.3
Feb.	100.0	-0.4	-2.0	107.8	103.7	102.8	94.0	82.2	99.8
Mar.	99.9	-0.1	-2.2	108.1	103.7	103.1	93.9	83.9	99.8
Apr.	100.0	0.1	-2.0	109.0	103.6	103.2	92.9	86.1	99.9
May	99.9	-0.1	-1.9	108.7	103.6	103.0	92.8	84.8	99.9
June	100.0	0.1	-1.7	109.4	103.9	103.3	92.7	85.5	100.1

## 1.3. Output/ Input price ratio index (cont'd)

(1995 average = 100)

Sector classification	Iron & steel	Non-ferrous metals	Metal products	General machinery	Electrical machinery	Transportation equipment	Precision instruments	Other industrial products
C.Y. 1995	100.0	100.0	100.0	100.0	100.0	100.0	100.0	100.0
1996	99.8	103.1	101.5	101.7	99.8	102.2	103.0	100.2
1997	98.1	97.4	99.7	101.9	98.2	102.4	104.0	99.7
1998	98.1	104.6	101.0	102.6	97.9	104.1	104.9	101.6
1999	98.8	109.1	103.0	102.4	96.8	102.4	104.4	103.7
F.Y. 1995	100.0	101.6	100.7	100.4	100.1	100.5	100.4	99.9
1996	99.7	101.5	101.2	102.0	99.5	102.3	103.8	100.2
1997	97.9	99.1	99.5	101.9	97.9	102.7	103.9	100.0
1998	98.3	107.0	101.7	102.7	97.8	103.9	104.7	102.4
1999	98.6	106.9	102.8	102.2	96.2	101.9	104.2	103.4
Jan. 1995	99.0	93.0	99.6	99.8	100.5	100.1	100.1	100.4
Feb.	99.0	95.0	99.1	99.8	100.4	100.0	100.0	100.4
Mar.	99.4	99.3	98.8	99.4	99.3	99.4	99.5	100.2
Apr.	100.2	103.9	98.4	99.3	98.8	98.5	99.1	99.9
May	100.6	106.4	98.7	99.5	99.0	98.7	99.3	99.9
June	100.7	105.3	99.1	99.6	99.1	98.8	99.3	100.0
July	100.5	102.2	99.9	99.8	99.7	99.2	99.4	99.9
Aug.	100.2	99.3	100.5	100.2	100.2	100.3	99.9	99.8
Sep.	100.3	98.4	100.9	100.4	100.6	100.9	100.5	99.9
Oct.	100.6	100.1	101.4	100.8	100.9	101.1	100.9	100.0
Nov.	100.1	99.3	101.6	100.8	100.8	101.5	101.1	99.6
Dec.	99.3	99.9	101.9	100.8	100.7	101.5	101.0	99.8
Jan. 1996	98.9	101.8	101.6	101.0	100.8	102.0	101.5	99.8
Feb.	99.2	102.1	101.7	101.3	100.5	102.0	101.5	100.0
Mar.	99.6	101.6	101.7	101.4	100.0	102.1	101.7	100.1
Apr.	99.8	100.7	101.9	101.6	100.2	102.2	102.1	100.2
May	99.8	100.0	102.0	101.6	99.8	101.9	102.3	100.4
June	100.0	104.0	102.1	101.9	99.8	102.2	103.1	100.5
July	99.7	106.2	101.3	101.8	99.5	102.2	103.2	100.3
Aug.	99.9	105.8	101.1	101.8	99.0	102.1	103.3	100.3
Sep.	100.3	106.0	100.9	101.9	99.4	102.2	103.7	100.2
Oct.	100.6	106.1	101.3	102.1	99.5	102.5	104.1	100.4
Nov.	100.2	103.0	101.1	102.0	99.1	102.4	104.2	100.2
Dec.	99.6	101.3	101.0	102.0	99.0	102.4	104.2	100.1
Jan. 1997	99.3	97.9	100.8	102.2	99.1	102.7	104.6	100.0
Feb.	98.9	95.6	100.7	102.4	99.6	103.0	104.9	100.0
Mar.	98.4	94.9	100.4	102.3	99.4	103.0	105.0	99.7
Apr.	98.3	95.4	99.7	102.1	98.8	102.8	104.1	99.5
May	97.9	95.4	99.6	101.8	98.0	102.1	103.5	99.6
June	97.9	96.7	99.4	101.5	97.2	101.5	103.1	99.5
July	97.1	98.1	98.9	101.3	97.3	101.6	103.1	99.5
Aug.	97.1	97.6	98.9	101.5	97.3	101.8	103.2	99.6
Sep.	97.2	98.5	99.0	101.7	97.6	102.2	103.5	99.6
Oct.	98.0	99.2	99.5	101.9	97.5	102.4	103.9	99.9
Nov.	98.2	99.8	99.6	102.1	98.1	103.0	104.3	100.1
Dec.	97.9	101.0	99.7	102.3	98.2	103.4	104.7	100.3
Jan. 1998	97.7	102.2	99.7	102.3	98.4	103.7	104.6	100.4
Feb.	98.2	103.8	99.9	102.3	98.1	103.5	104.7	100.6
Mar.	98.9	102.9	100.1	102.4	97.8	104.0	104.8	101.0
Apr.	98.9	102.1	100.1	102.6	97.6	104.2	104.8	101.2
May	98.6	102.1	100.4	102.8	98.1	104.7	105.1	101.2
June	98.2	102.6	100.7	102.9	98.7	105.4	105.8	101.4
July	97.3	102.6	100.9	102.8	98.4	105.0	105.4	101.4
Aug.	97.1	102.2	101.1	103.0	98.7	105.3	105.8	101.7
Sep.	97.1	104.3	101.5	102.8	98.1	104.4	105.0	101.9
Oct.	98.1	109.5	102.3	102.6	97.5	103.4	104.0	102.9
Nov.	98.9	110.9	102.4	102.4	97.3	103.1	104.0	103.2
Dec.	98.8	113.0	102.8	102.6	97.4	102.7	104.0	103.3
Jan. 1999	98.7	114.7	103.1	102.5	97.2	102.4	103.9	103.4
Feb.	98.6	113.6	102.9	102.6	97.3	102.9	104.4	103.5
Mar.	98.8	112.6	103.0	102.8	97.3	103.2	104.7	104.0
Apr.	99.0	109.4	103.9	102.9	97.3	103.5	105.1	104.4
May	99.1	106.9	103.7	102.8	97.4	103.6	105.3	104.3
June	98.8	108.0	103.7	102.8	97.4	103.3	105.1	104.3
July	97.9	105.2	103.1	102.6	97.2	102.9	104.8	104.2
Aug.	97.8	106.5	103.0	102.4	96.7	102.1	104.3	104.0
Sep.	99.0	106.7	102.7	102.1	96.3	101.1	103.7	104.0
Oct.	99.6	108.5	102.2	102.0	95.9	101.1	103.5	103.1
Nov.	98.9	109.1	102.2	101.8	95.8	100.9	103.5	102.8
Dec.	98.5	108.9	102.3	101.7	95.6	100.4	103.6	102.9
Jan. 2000	98.6	105.5	102.3	101.9	95.2	101.0	104.0	102.8
Feb.	98.6	103.2	102.1	101.9	95.2	101.5	104.1	102.3
Mar.	98.1	105.1	101.9	101.8	94.8	101.0	104.0	102.5
Apr.	98.2	108.2	101.7	101.7	94.8	100.6	103.8	102.0
May	98.2	106.9	101.7	101.8	94.6	100.7	103.7	101.9
June	98.6	107.3	101.7	101.6	94.3	100.6	103.4	101.8

## 1995 Base Linked Index (from January 1990 to December 1994)

## 2.1.(1) Input price index - Indexes of manufacturing industry sector

(1995 average = 100)

Sector classification	Manufacturing industry									
		Domestic products		Imports	Monthly changes		Yearly changes			
		Monthly changes	Yearly changes		Monthly changes	Yearly changes				
		%	%		%	%	%	%		
C.Y.	1990	110.4	--	--	107.2	--	--	140.7	--	--
	1991	109.8	--	-0.5	107.9	--	0.7	128.1	--	-9.0
	1992	107.1	--	-2.5	105.8	--	-1.9	118.7	--	-7.3
	1993	103.7	--	-3.2	103.5	--	-2.2	106.1	--	-10.6
	1994	100.9	--	-2.7	101.0	--	-2.4	100.5	--	-5.3
F.Y.	1990	110.8	--	--	107.7	--	--	140.5	--	--
	1991	108.9	--	-1.7	107.4	--	-0.3	123.6	--	-12.0
	1992	106.6	--	-2.1	105.4	--	-1.9	117.6	--	-4.9
	1993	102.7	--	-3.7	102.7	--	-2.6	102.5	--	-12.8
	1994	100.8	--	-1.9	100.8	--	-1.9	101.5	--	-1.0
	Jan. 1990	109.3	--	--	106.9	--	--	133.1	--	--
	Feb.	109.4	0.1	--	106.6	-0.3	--	135.2	1.6	--
	Mar.	110.0	0.5	--	106.8	0.2	--	140.9	4.2	--
	Apr.	110.5	0.5	--	106.9	0.1	--	144.0	2.2	--
	May	110.2	-0.3	--	106.9	0.0	--	140.8	-2.2	--
	June	109.8	-0.4	--	106.8	-0.1	--	139.2	-1.1	--
	July	109.7	-0.1	--	107.0	0.2	--	135.7	-2.5	--
	Aug.	110.0	0.3	--	107.2	0.2	--	137.0	1.0	--
	Sep.	110.6	0.5	--	107.4	0.2	--	141.6	3.4	--
	Oct.	111.3	0.6	--	107.6	0.2	--	145.6	2.8	--
	Nov.	111.8	0.4	--	108.1	0.5	--	147.3	1.2	--
	Dec.	112.0	0.2	--	108.3	0.2	--	147.5	0.1	--
	Jan. 1991	111.8	-0.2	2.3	108.5	0.2	1.5	143.5	-2.7	7.8
	Feb.	110.9	-0.8	1.4	108.5	0.0	1.8	133.8	-6.8	-1.0
	Mar.	110.7	-0.2	0.6	108.6	0.1	1.7	130.2	-2.7	-7.6
	Apr.	110.3	-0.4	-0.2	108.4	-0.2	1.4	128.7	-1.2	-10.6
	May	110.0	-0.3	-0.2	108.1	-0.3	1.1	128.1	-0.5	-9.0
	June	109.9	-0.1	0.1	107.9	-0.2	1.0	128.8	0.5	-7.5
	July	109.6	-0.3	-0.1	107.8	-0.1	0.7	126.3	-1.9	-6.9
	Aug.	109.5	-0.1	-0.5	107.8	0.0	0.6	125.6	-0.6	-8.3
	Sep.	109.3	-0.2	-1.2	107.6	-0.2	0.2	124.8	-0.6	-11.9
	Oct.	108.7	-0.5	-2.3	107.2	-0.4	-0.4	122.8	-1.6	-15.7
	Nov.	108.6	-0.1	-2.9	107.1	-0.1	-0.9	122.8	0.0	-16.6
	Dec.	108.3	-0.3	-3.3	106.9	-0.2	-1.3	121.4	-1.1	-17.7
	Jan. 1992	107.5	-0.7	-3.8	106.6	-0.3	-1.8	116.7	-3.9	-18.7
	Feb.	107.5	0.0	-3.1	106.5	-0.1	-1.8	117.2	0.4	-12.4
	Mar.	107.6	0.1	-2.8	106.3	-0.2	-2.1	120.1	2.5	-7.8
	Apr.	107.5	-0.1	-2.5	106.1	-0.2	-2.1	120.7	0.5	-6.2
	May	107.4	-0.1	-2.4	106.0	-0.1	-1.9	120.5	-0.2	-5.9
	June	107.2	-0.2	-2.5	105.9	-0.1	-1.9	119.4	-0.9	-7.3
	July	107.3	0.1	-2.1	105.9	0.0	-1.8	120.8	1.2	-4.4
	Aug.	107.3	0.0	-2.0	105.8	-0.1	-1.9	121.5	0.6	-3.3
	Sep.	107.0	-0.3	-2.1	105.7	-0.1	-1.8	118.4	-2.6	-5.1
	Oct.	106.2	-0.7	-2.3	105.1	-0.6	-2.0	115.9	-2.1	-5.6
	Nov.	106.2	0.0	-2.2	105.0	-0.1	-2.0	116.7	0.7	-5.0
	Dec.	106.1	-0.1	-2.0	105.0	0.0	-1.8	116.2	-0.4	-4.3
	Jan. 1993	106.1	0.0	-1.3	105.0	0.0	-1.5	115.9	-0.3	-0.7
	Feb.	105.6	-0.5	-1.8	104.8	-0.2	-1.6	113.2	-2.3	-3.4
	Mar.	105.1	-0.5	-2.3	104.4	-0.4	-1.8	112.0	-1.1	-6.7
	Apr.	104.6	-0.5	-2.7	104.1	-0.3	-1.9	110.1	-1.7	-8.8
	May	104.3	-0.3	-2.9	103.9	-0.2	-2.0	108.6	-1.4	-9.9
	June	103.8	-0.5	-3.2	103.5	-0.4	-2.3	106.2	-2.2	-11.1
	July	103.5	-0.3	-3.5	103.4	-0.1	-2.4	104.9	-1.2	-13.2
	Aug.	102.8	-0.7	-4.2	103.1	-0.3	-2.6	99.7	-5.0	-17.9
	Sep.	102.6	-0.2	-4.1	102.9	-0.2	-2.6	100.3	0.6	-15.3
	Oct.	102.0	-0.6	-4.0	102.3	-0.6	-2.7	99.9	-0.4	-13.8
	Nov.	101.9	-0.1	-4.0	102.0	-0.3	-2.9	100.7	0.8	-13.7
	Dec.	102.0	0.1	-3.9	102.0	0.0	-2.9	101.1	0.4	-13.0
	Jan. 1994	101.8	-0.2	-4.1	101.9	-0.1	-3.0	101.0	-0.1	-12.9
	Feb.	101.4	-0.4	-4.0	101.7	-0.2	-3.0	98.9	-2.1	-12.6
	Mar.	101.1	-0.3	-3.8	101.4	-0.3	-2.9	98.9	0.0	-11.7
	Apr.	100.8	-0.3	-3.6	101.2	-0.2	-2.8	97.5	-1.4	-11.4
	May	100.9	0.1	-3.3	101.1	-0.1	-2.7	99.3	1.8	-8.6
	June	100.9	0.0	-2.8	101.0	-0.1	-2.4	100.4	1.1	-5.5
	July	100.8	-0.1	-2.6	101.0	0.0	-2.3	99.2	-1.2	-5.4
	Aug.	100.9	0.1	-1.8	100.9	-0.1	-2.1	101.1	1.9	1.4
	Sep.	100.8	-0.1	-1.8	100.9	0.0	-1.9	101.3	0.2	1.0
	Oct.	100.4	-0.4	-1.6	100.4	-0.5	-1.9	101.0	-0.3	1.1
	Nov.	100.4	0.0	-1.5	100.2	-0.2	-1.8	102.0	1.0	1.3
	Dec.	100.9	0.5	-1.1	100.4	0.2	-1.6	105.8	3.7	4.6



## 2.1.(2) Input price index - Indexes of major sector

(1995 average = 100)

Sector classification	Foods	Textile products	Pulp, paper & wooden products	Chemical products	Petroleum & coal products	Ceramic, stone & clay products	Iron & steel	Non-ferrous metals	Metal products
C.Y. 1990	108.7	115.0	104.1	108.2	166.7	101.9	114.6	134.8	109.7
1991	109.1	115.6	103.5	113.3	149.3	104.4	112.4	114.3	110.3
1992	109.1	110.3	101.9	105.7	137.0	103.9	108.1	103.3	107.9
1993	107.2	101.6	104.2	101.2	114.4	101.7	105.3	86.0	103.9
1994	106.7	100.8	99.1	97.2	99.6	100.1	100.8	91.8	99.9
F.Y. 1990	108.9	114.9	104.1	111.7	170.6	102.8	114.3	132.6	110.1
1991	109.1	115.0	103.1	110.4	140.4	104.5	111.5	109.5	109.7
1992	108.8	108.4	102.7	104.9	135.4	103.5	107.4	101.6	107.2
1993	107.5	100.4	102.9	99.5	107.2	101.0	103.9	83.1	102.6
1994	104.5	101.1	98.9	98.2	100.6	100.2	101.0	97.1	100.1
Jan. 1990	107.2	115.3	103.7	104.2	149.0	100.5	114.3	128.6	109.4
Feb.	107.9	115.1	103.6	104.4	154.2	100.6	114.0	126.8	109.3
Mar.	108.8	115.6	104.5	104.9	157.2	101.0	114.7	137.5	109.4
Apr.	109.8	116.6	104.9	105.6	159.0	101.5	115.5	141.1	109.0
May	109.8	116.7	105.0	105.4	150.0	101.6	115.1	140.3	108.8
June	109.9	115.9	105.3	105.2	145.8	101.7	114.9	137.3	108.7
July	109.6	115.1	104.9	105.3	140.2	101.9	114.9	138.4	109.5
Aug.	109.7	114.9	104.4	106.4	140.3	102.1	115.0	143.8	110.1
Sep.	108.7	114.4	103.9	108.8	166.3	102.8	115.2	143.4	110.3
Oct.	107.7	113.3	102.8	114.3	200.5	102.8	114.0	131.8	110.3
Nov.	107.6	113.1	102.7	116.7	221.7	103.3	113.4	124.7	110.5
Dec.	107.9	113.7	103.3	117.6	215.8	103.4	113.7	123.7	110.6
Jan. 1991	108.2	114.8	103.9	117.9	197.3	103.9	114.1	123.9	111.0
Feb.	108.5	114.9	103.5	118.9	166.0	104.1	112.6	119.9	110.9
Mar.	109.5	115.9	104.4	118.2	144.3	104.1	113.1	122.8	110.9
Apr.	109.7	116.2	104.6	115.3	139.7	104.2	112.7	121.6	110.1
May	109.8	116.8	104.3	113.7	139.7	104.4	112.7	117.5	110.1
June	109.6	117.5	104.2	113.3	142.7	104.5	112.4	114.8	110.0
July	109.0	117.0	104.2	111.7	140.3	104.6	112.3	113.7	110.1
Aug.	109.0	116.3	103.7	111.1	142.2	104.5	113.1	111.9	110.3
Sep.	109.1	115.4	103.0	110.5	142.8	104.2	112.7	110.1	110.5
Oct.	108.6	114.0	102.3	110.1	143.7	104.7	111.6	106.6	110.0
Nov.	109.0	114.1	102.1	109.8	146.2	104.7	110.9	106.1	109.8
Dec.	108.8	114.3	102.0	109.0	146.8	104.5	110.5	102.4	109.6
Jan. 1992	108.7	113.3	101.9	107.0	135.5	104.3	110.2	99.6	108.9
Feb.	109.1	112.8	102.1	107.3	131.0	104.4	110.1	102.7	108.8
Mar.	109.1	112.6	102.3	106.4	133.7	104.4	109.3	106.6	108.4
Apr.	109.1	112.5	102.3	105.5	134.2	104.0	109.0	107.7	108.1
May	109.1	112.3	102.0	105.2	136.0	103.9	108.8	106.7	108.0
June	109.3	111.4	101.5	105.1	137.0	103.8	108.2	104.7	107.9
July	109.2	110.3	101.7	105.5	142.5	104.0	107.4	107.4	108.2
Aug.	109.1	109.2	101.7	105.5	145.3	104.0	107.4	107.7	108.0
Sep.	109.7	108.3	101.7	105.4	139.0	103.9	107.4	104.0	107.8
Oct.	108.8	107.0	101.5	105.0	136.5	103.3	106.6	98.1	107.0
Nov.	108.9	107.0	102.0	105.1	137.5	103.2	106.2	96.5	106.9
Dec.	108.7	107.4	102.4	105.0	135.5	103.2	106.8	97.8	106.7
Jan. 1993	108.4	106.6	103.9	104.4	131.5	103.1	107.7	99.1	106.3
Feb.	107.6	105.4	105.2	103.8	126.2	102.8	107.2	96.4	105.9
Mar.	107.3	103.9	106.7	103.0	123.0	102.3	106.2	92.6	105.5
Apr.	107.0	103.7	107.6	102.2	120.3	102.0	105.5	88.0	105.3
May	106.0	103.0	107.8	101.9	118.5	101.9	105.7	84.9	104.7
June	105.2	101.8	107.0	101.6	115.7	101.7	105.7	84.1	104.4
July	105.4	101.3	105.5	101.0	113.5	101.9	105.5	85.6	104.1
Aug.	105.1	100.1	103.2	100.3	106.0	101.6	105.3	83.2	103.4
Sep.	107.9	99.1	102.1	99.8	104.7	101.3	104.6	80.6	102.6
Oct.	108.2	97.8	100.8	99.0	103.3	100.8	103.6	78.2	102.0
Nov.	108.8	97.9	100.2	98.7	105.8	100.4	102.9	78.2	101.6
Dec.	109.2	98.6	100.2	98.5	104.0	100.3	103.3	80.6	101.5
Jan. 1994	109.3	99.3	100.4	97.5	99.8	100.3	102.7	83.8	101.2
Feb.	109.1	100.9	100.0	96.6	98.3	100.1	101.5	84.5	100.3
Mar.	109.3	101.0	99.9	96.4	96.3	99.5	100.9	85.4	99.6
Apr.	108.8	101.4	99.7	95.7	93.3	99.5	100.2	85.3	99.3
May	108.7	102.0	99.6	95.8	96.3	99.9	100.0	88.5	99.2
June	108.6	101.5	99.3	95.9	99.2	100.2	99.9	91.5	99.1
July	107.2	100.8	98.8	96.3	100.8	100.5	100.1	92.0	99.6
Aug.	106.5	100.6	98.8	97.1	104.8	100.5	100.1	92.2	99.8
Sep.	105.8	100.6	98.3	97.5	103.7	100.5	101.0	93.9	100.0
Oct.	103.5	100.2	98.0	98.2	101.2	100.1	100.9	95.8	100.1
Nov.	101.6	100.2	97.9	99.1	99.7	100.1	101.3	101.6	100.1
Dec.	102.4	101.3	98.4	100.1	102.2	100.2	101.5	107.5	100.2

## 2.1.(2) Input price index (cont'd)

(1995 average = 100)

Sector classification	General machinery	Electrical machinery	Transportation equipment	Precision instruments	Other industrial products
C.Y. 1990	103.9	114.8	104.8	107.3	104.7
1991	105.0	111.8	105.2	106.4	107.4
1992	104.2	108.8	105.2	104.9	104.4
1993	102.4	105.1	104.0	103.2	101.5
1994	100.6	102.2	101.5	101.2	99.0
F.Y. 1990	104.2	113.9	105.0	107.0	105.8
1991	105.0	111.0	105.1	106.2	106.6
1992	103.8	108.0	105.1	104.5	103.9
1993	101.9	104.1	103.3	102.6	100.7
1994	100.5	102.0	101.1	101.0	99.1
Jan. 1990	103.5	116.5	104.4	107.8	104.0
Feb.	103.4	116.0	104.4	107.6	103.9
Mar.	103.4	116.1	104.8	107.5	103.9
Apr.	103.6	115.8	104.7	107.4	104.1
May	103.5	115.4	104.8	107.3	104.0
June	103.6	114.9	104.8	107.2	104.1
July	103.9	114.7	104.9	107.3	104.2
Aug.	104.0	114.7	105.0	107.7	104.6
Sep.	104.2	114.2	105.0	107.4	104.7
Oct.	104.2	113.3	104.8	106.9	105.2
Nov.	104.4	113.1	104.8	106.9	106.7
Dec.	104.5	113.1	105.0	106.5	107.4
Jan. 1991	104.9	113.0	105.1	106.5	108.1
Feb.	104.9	112.4	105.2	106.4	108.2
Mar.	105.0	112.6	105.3	106.8	108.4
Apr.	105.1	112.3	105.3	106.7	108.4
May	105.0	112.2	105.3	106.7	108.3
June	105.0	112.1	105.2	106.7	108.0
July	105.2	111.9	105.2	106.8	107.7
Aug.	105.2	111.7	105.2	106.5	107.3
Sep.	105.2	111.5	105.2	106.3	106.9
Oct.	105.1	110.9	105.0	106.1	106.2
Nov.	104.9	110.4	104.9	105.9	105.7
Dec.	104.9	110.1	104.9	105.8	105.3
Jan. 1992	104.7	109.8	105.0	105.5	105.2
Feb.	104.6	109.6	105.0	105.4	105.1
Mar.	104.5	109.9	105.0	105.4	105.0
Apr.	104.4	109.4	105.3	105.2	104.9
May	104.3	109.2	105.3	105.0	104.8
June	104.2	108.8	105.3	104.8	104.6
July	104.3	109.0	105.5	104.9	104.6
Aug.	104.2	108.7	105.5	104.8	104.3
Sep.	104.0	108.4	105.3	104.7	104.0
Oct.	103.7	107.6	105.0	104.5	103.6
Nov.	103.6	107.5	104.9	104.3	103.5
Dec.	103.5	107.2	104.9	104.2	103.4
Jan. 1993	103.5	107.2	104.9	104.1	103.2
Feb.	103.3	107.0	104.9	103.9	103.1
Mar.	103.1	106.5	104.6	103.9	102.6
Apr.	102.9	106.0	104.5	103.8	102.3
May	102.7	105.5	104.3	103.8	102.0
June	102.4	104.9	104.2	103.4	101.6
July	102.5	104.9	104.2	103.4	101.5
Aug.	102.3	104.5	103.6	103.1	101.2
Sep.	102.0	104.1	103.4	103.0	100.7
Oct.	101.7	103.8	103.1	101.9	100.3
Nov.	101.5	103.4	102.9	101.8	100.1
Dec.	101.3	103.2	102.9	101.8	99.8
Jan. 1994	101.2	103.2	102.8	101.8	99.7
Feb.	101.0	102.9	102.4	101.5	99.5
Mar.	100.7	102.6	101.8	101.4	99.2
Apr.	100.6	102.4	101.7	101.3	99.0
May	100.5	102.4	101.5	101.3	98.8
June	100.4	102.3	101.5	101.3	98.6
July	100.4	102.1	101.6	101.3	98.7
Aug.	100.4	102.0	101.6	101.1	98.7
Sep.	100.4	101.8	101.4	100.9	98.7
Oct.	100.3	101.5	100.7	100.8	99.0
Nov.	100.3	101.5	100.6	100.8	99.1
Dec.	100.4	101.5	100.6	100.8	99.3

## 2.2.(1) Output price index - Indexes of manufacturing industry sector

(1995 average = 100)

Sector classification		Manufacturing industry			Domestic products			Exports		
		Monthly changes	Yearly changes		Monthly changes	Yearly changes		Monthly changes	Yearly changes	
C.Y.	1990	105.9	--	--	104.0	--	--	125.5	--	--
	1991	106.4	--	0.5	105.1	--	1.1	119.9	--	-4.5
	1992	105.3	--	-1.0	104.3	--	-0.8	116.2	--	-3.1
	1993	103.0	--	-2.2	102.7	--	-1.5	106.8	--	-8.1
	1994	100.9	--	-2.0	100.8	--	-1.9	102.8	--	-3.7
F.Y.	1990	106.2	--	--	104.5	--	--	123.8	--	--
	1991	106.2	--	0.0	105.0	--	0.5	118.9	--	-4.0
	1992	104.9	--	-1.2	104.0	--	-1.0	114.9	--	-3.4
	1993	102.4	--	-2.4	102.1	--	-1.8	105.4	--	-8.3
	1994	100.7	--	-1.7	100.6	--	-1.5	101.5	--	-3.7
Jan.	1990	105.5	--	--	103.5	--	--	126.5	--	--
Feb.		105.5	0.0	--	103.5	0.0	--	126.5	0.0	--
Mar.		105.9	0.4	--	103.6	0.1	--	129.7	2.5	--
Apr.		106.1	0.2	--	103.6	0.0	--	131.9	1.7	--
May		105.8	-0.3	--	103.6	0.0	--	129.2	-2.0	--
June		105.8	0.0	--	103.6	0.0	--	128.9	-0.2	--
July		105.8	0.0	--	103.7	0.1	--	127.2	-1.3	--
Aug.		105.9	0.1	--	103.9	0.2	--	126.7	-0.4	--
Sep.		105.9	0.0	--	104.3	0.4	--	122.5	-3.3	--
Oct.		105.9	0.0	--	104.8	0.5	--	118.3	-3.4	--
Nov.		106.3	0.4	--	105.2	0.4	--	117.9	-0.3	--
Dec.		106.6	0.3	--	105.2	0.0	--	120.3	2.0	--
Jan.	1991	106.8	0.2	1.2	105.4	0.2	1.8	121.1	0.7	-4.3
Feb.		106.6	-0.2	1.0	105.3	-0.1	1.7	119.3	-1.5	-5.7
Mar.		106.8	0.2	0.8	105.4	0.1	1.7	122.0	2.3	-5.9
Apr.		106.7	-0.1	0.6	105.3	-0.1	1.6	121.2	-0.7	-8.1
May		106.7	0.0	0.9	105.3	0.0	1.6	121.2	0.0	-6.2
June		106.7	0.0	0.9	105.2	-0.1	1.5	121.6	0.3	-5.7
July		106.5	-0.2	0.7	105.1	-0.1	1.4	120.7	-0.7	-5.1
Aug.		106.4	-0.1	0.5	105.1	0.0	1.2	120.3	-0.3	-5.1
Sep.		106.1	-0.3	0.2	104.9	-0.2	0.6	119.3	-0.8	-2.6
Oct.		105.9	-0.2	0.0	104.9	0.0	0.1	117.3	-1.7	-0.8
Nov.		105.9	0.0	-0.4	104.9	0.0	-0.3	117.4	0.1	-0.4
Dec.		105.9	0.0	-0.7	104.8	-0.1	-0.4	117.2	-0.2	-2.6
Jan.	1992	105.6	-0.3	-1.1	104.7	-0.1	-0.7	115.6	-1.4	-4.5
Feb.		105.6	0.0	-0.9	104.7	0.0	-0.6	116.3	0.6	-2.5
Mar.		105.8	0.2	-0.9	104.6	-0.1	-0.8	119.2	2.5	-2.3
Apr.		105.7	-0.1	-0.9	104.5	-0.1	-0.8	119.8	0.5	-1.2
May		105.6	-0.1	-1.0	104.4	-0.1	-0.9	118.6	-1.0	-2.1
June		105.4	-0.2	-1.2	104.4	0.0	-0.8	116.4	-1.9	-4.3
July		105.3	-0.1	-1.1	104.3	-0.1	-0.8	116.3	-0.1	-3.6
Aug.		105.3	0.0	-1.0	104.2	-0.1	-0.9	116.7	0.3	-3.0
Sep.		105.1	-0.2	-0.9	104.2	0.0	-0.7	114.8	-1.6	-3.8
Oct.		104.7	-0.4	-1.1	104.0	-0.2	-0.9	113.2	-1.4	-3.5
Nov.		104.7	0.0	-1.1	103.9	-0.1	-1.0	113.7	0.4	-3.2
Dec.		104.7	0.0	-1.1	103.7	-0.2	-1.0	113.7	0.0	-3.0
Jan.	1993	104.6	-0.1	-0.9	103.7	0.0	-1.0	114.1	0.4	-1.3
Feb.		104.2	-0.4	-1.3	103.6	-0.1	-1.1	111.5	-2.3	-4.1
Mar.		103.9	-0.3	-1.8	103.4	-0.2	-1.1	109.4	-1.9	-8.2
Apr.		103.5	-0.4	-2.1	103.2	-0.2	-1.2	107.4	-1.8	-10.4
May		103.3	-0.2	-2.2	103.0	-0.2	-1.3	106.1	-1.2	-10.5
June		102.9	-0.4	-2.4	102.8	-0.2	-1.5	104.0	-2.0	-10.7
July		102.8	-0.1	-2.4	102.6	-0.2	-1.6	104.5	0.5	-10.1
Aug.		102.3	-0.5	-2.8	102.4	-0.2	-1.7	102.5	-1.9	-12.2
Sep.		102.2	-0.1	-2.8	102.1	-0.3	-2.0	104.4	1.9	-9.1
Oct.		102.1	-0.1	-2.5	101.9	-0.2	-2.0	105.6	1.1	-6.7
Nov.		102.0	-0.1	-2.6	101.7	-0.2	-2.1	105.8	0.2	-6.9
Dec.		102.0	0.0	-2.6	101.7	0.0	-1.9	106.8	0.9	-6.1
Jan.	1994	102.1	0.1	-2.4	101.6	-0.1	-2.0	108.2	1.3	-5.2
Feb.		101.6	-0.5	-2.5	101.4	-0.2	-2.1	104.9	-3.0	-5.9
Mar.		101.4	-0.2	-2.4	101.1	-0.3	-2.2	104.4	-0.5	-4.6
Apr.		101.1	-0.3	-2.3	100.9	-0.2	-2.2	103.4	-1.0	-3.7
May		101.1	0.0	-2.1	100.8	-0.1	-2.1	103.4	0.0	-2.5
June		101.0	-0.1	-1.8	100.8	0.0	-1.9	102.9	-0.5	-1.1
July		100.6	-0.4	-2.1	100.7	-0.1	-1.9	100.6	-2.2	-3.7
Aug.		100.6	0.0	-1.7	100.7	0.0	-1.7	101.1	0.5	-1.4
Sep.		100.5	-0.1	-1.7	100.6	-0.1	-1.5	100.9	-0.2	-3.4
Oct.		100.4	-0.1	-1.7	100.4	-0.2	-1.5	101.0	0.1	-4.4
Nov.		100.3	-0.1	-1.7	100.4	0.0	-1.3	100.8	-0.2	-4.7
Dec.		100.5	0.2	-1.5	100.4	0.0	-1.3	101.8	1.0	-4.7

## 2.2.(2) Output price index - Indexes of major sector

(1995 average = 100)

Sector classification		Foods	Textile products	Pulp, paper & wooden products	Chemical products	Petroleum & coal products	Ceramic, stone & clay products	Iron & steel	Non-ferrous metals	Metal products
C.Y.	1990	97.5	103.4	98.5	107.0	113.8	100.4	113.6	121.4	102.8
	1991	100.3	106.0	99.6	109.9	114.6	103.9	113.9	112.1	104.2
	1992	101.8	105.7	99.1	105.3	109.0	103.8	110.8	104.6	103.9
	1993	101.5	102.2	100.5	101.7	104.4	102.6	105.8	95.6	102.2
	1994	101.3	101.0	98.7	99.0	99.7	100.7	100.5	95.8	100.5
F.Y.	1990	98.3	103.8	99.0	108.4	116.8	101.3	113.6	120.2	103.2
	1991	100.9	106.5	99.4	108.5	112.0	104.2	113.7	109.2	104.3
	1992	101.8	104.9	99.5	104.5	108.6	103.6	109.7	103.8	103.6
	1993	101.5	101.6	100.1	100.7	102.5	102.0	104.2	93.7	101.6
	1994	100.9	100.8	98.8	99.1	100.1	100.5	100.4	97.8	100.3
1990	Jan.	95.8	103.1	97.8	106.4	106.3	99.3	114.0	119.5	102.4
	Feb.	96.0	103.0	97.7	106.4	108.3	99.3	113.6	118.9	102.3
	Mar.	96.2	103.4	97.9	106.6	108.6	99.4	113.6	123.1	102.4
	Apr.	96.7	103.7	98.0	105.8	109.0	100.0	113.8	123.9	102.6
	May	96.8	103.7	98.3	105.7	109.0	100.2	113.5	124.3	102.6
	June	97.4	103.5	98.6	105.8	109.0	100.5	113.5	122.1	102.6
	July	98.0	103.1	98.6	105.6	109.2	100.6	113.6	123.1	102.7
	Aug.	98.4	103.2	98.5	105.8	109.2	100.7	113.9	124.8	102.7
	Sep.	98.6	103.3	99.0	105.8	117.0	101.0	113.6	124.2	102.7
	Oct.	98.4	103.5	99.1	107.9	125.5	101.1	113.3	119.3	103.4
	Nov.	98.6	103.5	99.1	110.5	128.4	101.3	113.5	117.0	103.5
	Dec.	98.7	103.8	99.4	111.3	125.7	101.5	113.8	116.4	103.7
1991	Jan.	98.8	104.3	99.8	111.9	123.1	102.6	114.0	116.7	104.0
	Feb.	99.1	104.4	99.9	112.3	119.6	102.9	113.3	114.7	104.0
	Mar.	99.5	105.5	100.2	112.2	116.6	103.2	113.5	116.1	104.1
	Apr.	100.1	105.9	100.2	111.2	114.4	103.6	113.8	114.9	104.1
	May	100.6	106.0	99.6	110.5	114.2	104.0	113.8	113.6	104.5
	June	100.7	106.2	99.7	109.9	114.8	104.5	113.8	112.4	104.5
	July	100.7	106.1	99.8	109.4	112.1	104.5	113.8	111.7	104.4
	Aug.	100.7	106.1	99.6	109.1	112.6	104.6	114.5	110.6	104.1
	Sep.	100.4	106.4	99.4	108.7	111.5	104.4	114.4	110.1	104.1
	Oct.	100.5	106.7	99.2	108.2	111.9	104.2	114.2	108.7	104.2
	Nov.	100.6	107.1	99.1	108.0	112.4	104.1	113.9	108.4	104.4
	Dec.	101.3	107.1	99.0	107.5	112.5	104.0	113.6	106.8	104.4
1992	Jan.	101.6	107.0	99.0	106.7	110.4	103.9	113.2	103.2	104.4
	Feb.	101.7	106.8	99.0	106.8	108.4	103.9	113.0	104.0	104.3
	Mar.	101.8	106.7	99.1	106.3	108.5	104.1	112.0	105.6	104.4
	Apr.	101.9	106.5	99.2	105.7	107.2	103.9	111.8	105.9	104.2
	May	101.9	106.4	99.2	105.3	107.6	103.9	111.5	105.7	104.2
	June	101.9	106.0	99.2	105.2	108.3	104.0	111.0	105.0	103.8
	July	101.9	105.6	99.1	105.0	109.0	103.7	110.3	106.6	103.7
	Aug.	101.9	105.2	99.0	104.9	109.6	103.7	110.0	106.8	103.6
	Sep.	101.9	104.9	98.9	104.7	110.4	103.6	109.5	105.6	103.4
	Oct.	101.6	104.6	98.9	104.4	110.0	103.4	109.1	102.8	103.3
	Nov.	101.6	104.4	99.1	104.2	109.7	103.6	109.0	101.8	103.4
	Dec.	101.9	104.6	99.3	104.1	109.1	103.5	108.8	102.3	103.5
1993	Jan.	101.8	104.1	100.0	103.7	108.2	103.5	108.9	102.2	103.5
	Feb.	101.7	103.7	100.7	103.4	107.3	103.2	108.3	101.5	103.2
	Mar.	101.7	103.1	101.2	102.9	106.4	103.1	107.6	99.4	102.9
	Apr.	101.7	103.0	101.2	102.4	106.1	102.9	106.9	97.7	102.5
	May	101.5	102.6	101.3	102.1	105.6	102.8	106.4	95.5	102.5
	June	101.2	102.3	101.3	101.8	105.0	102.7	105.9	94.8	102.3
	July	101.2	102.2	101.0	101.2	104.2	102.5	105.9	94.5	102.3
	Aug.	101.2	101.8	100.7	100.9	103.2	102.3	105.2	93.7	102.0
	Sep.	101.3	101.3	100.3	100.6	102.4	102.1	104.4	92.4	101.5
	Oct.	101.5	101.0	99.9	100.4	101.5	102.0	104.0	91.3	101.3
	Nov.	101.3	100.8	99.6	100.3	101.5	101.9	103.3	91.5	101.3
	Dec.	101.7	100.9	99.0	100.3	101.1	101.6	103.2	92.4	101.3
1994	Jan.	101.8	101.0	98.9	99.9	100.2	101.5	102.8	93.4	101.2
	Feb.	101.7	101.4	98.8	99.6	100.1	101.3	101.4	93.4	100.9
	Mar.	101.9	101.2	98.7	99.4	98.7	100.9	100.5	93.4	100.6
	Apr.	101.9	101.3	98.7	98.8	97.8	100.8	99.9	93.4	100.6
	May	102.0	101.3	98.7	98.6	98.3	100.7	99.7	94.8	100.5
	June	102.0	101.1	98.7	98.4	99.3	100.5	99.4	96.2	100.5
	July	101.6	101.0	98.6	98.3	100.0	100.4	99.3	96.5	100.3
	Aug.	101.6	100.9	98.5	98.4	100.5	100.4	99.8	96.5	100.3
	Sep.	101.1	100.7	98.4	98.6	100.9	100.6	100.3	96.8	100.3
	Oct.	99.9	100.6	98.6	99.0	100.6	100.6	100.7	97.3	100.2
	Nov.	99.9	100.5	98.7	99.4	100.2	100.6	100.8	98.4	100.1
	Dec.	100.2	100.7	98.8	99.5	100.3	100.6	100.9	99.9	100.2

## 2.2.(2) Output price index (cont'd)

(1995 average = 100)

Sector classification		General machinery	Electrical machinery	Transportation equipment	Precision instruments	Other industrial products	
C.Y.	1990	101.1	120.8	105.4	104.5	98.1	
	1991	102.2	115.6	105.4	104.3	101.3	
	1992	102.4	112.4	106.1	104.8	102.0	
	1993	101.7	107.9	103.9	104.1	101.0	
	1994	100.8	104.2	101.8	102.0	100.3	
	F.Y.	1990	101.4	119.2	105.3	104.5	98.9
		1991	102.4	114.7	105.5	104.5	101.6
		1992	102.3	111.5	105.9	104.8	101.9
1993		101.5	107.0	103.4	103.7	100.8	
	1994	100.5	103.2	101.1	101.5	100.1	
1990	Jan.	100.6	123.2	105.1	104.2	97.5	
	Feb.	100.7	122.7	105.2	104.0	97.6	
	Mar.	101.0	123.1	106.3	104.4	97.8	
	Apr.	101.4	122.9	106.7	105.1	97.9	
	May	101.3	122.0	105.7	105.0	97.9	
	June	101.4	121.6	105.8	105.1	97.9	
	July	101.3	120.9	105.6	104.9	97.8	
	Aug.	101.4	120.5	105.7	105.0	98.0	
	Sep.	101.2	119.3	104.8	104.5	98.0	
	Oct.	100.9	117.9	104.2	104.0	98.4	
	Nov.	101.0	117.5	104.3	104.1	98.8	
	Dec.	101.2	117.5	105.0	103.9	99.6	
1991	Jan.	101.8	117.4	105.4	103.9	100.4	
	Feb.	101.8	116.5	105.0	103.8	100.6	
	Mar.	102.0	116.8	105.7	104.4	101.1	
	Apr.	102.2	116.3	105.4	104.4	101.2	
	May	102.3	116.1	105.6	104.6	101.6	
	June	102.4	116.2	105.6	104.5	101.7	
	July	102.4	115.6	105.4	104.3	101.6	
	Aug.	102.5	115.5	105.4	104.3	101.5	
	Sep.	102.4	115.1	105.3	104.3	101.5	
	Oct.	102.4	114.3	105.0	104.3	101.4	
	Nov.	102.3	113.9	105.4	104.5	101.3	
	Dec.	102.4	113.6	105.5	104.6	101.2	
1992	Jan.	102.3	113.3	105.3	104.3	101.8	
	Feb.	102.3	113.2	105.6	104.6	102.2	
	Mar.	102.5	113.6	106.4	104.8	102.2	
	Apr.	102.7	113.6	106.6	105.1	102.4	
	May	102.6	113.2	106.5	105.0	102.4	
	June	102.5	112.6	106.1	104.8	102.1	
	July	102.4	112.3	106.2	105.0	102.1	
	Aug.	102.5	112.2	106.4	105.2	102.0	
	Sep.	102.3	111.6	106.2	104.8	101.9	
	Oct.	102.2	111.0	105.8	104.9	101.9	
	Nov.	102.2	111.0	105.8	104.6	101.8	
	Dec.	102.2	110.7	105.8	104.6	101.7	
1993	Jan.	102.3	110.6	106.0	104.6	101.7	
	Feb.	102.1	110.0	105.3	104.4	101.6	
	Mar.	101.9	109.4	104.6	104.4	101.4	
	Apr.	101.7	108.6	104.1	104.4	101.4	
	May	101.6	108.1	103.8	104.4	101.2	
	June	101.5	107.6	103.2	104.2	101.0	
	July	101.5	107.4	103.3	104.6	100.8	
	Aug.	101.4	106.8	102.3	104.0	100.7	
	Sep.	101.5	106.9	103.2	104.5	100.5	
	Oct.	101.6	106.8	103.6	103.1	100.5	
	Nov.	101.5	106.6	103.6	103.0	100.4	
	Dec.	101.5	106.5	103.9	103.3	100.6	
1994	Jan.	101.5	106.6	104.3	103.6	100.8	
	Feb.	101.2	105.9	103.2	102.5	100.6	
	Mar.	101.1	105.7	102.6	102.5	100.6	
	Apr.	101.0	105.2	102.0	102.3	100.4	
	May	101.0	105.0	101.9	102.5	100.3	
	June	100.8	104.6	101.8	102.4	100.2	
	July	100.5	103.7	101.2	101.7	100.1	
	Aug.	100.6	103.5	101.4	101.5	100.1	
	Sep.	100.5	103.1	101.2	101.1	100.0	
	Oct.	100.4	102.8	100.8	101.1	100.0	
	Nov.	100.4	102.4	100.5	101.0	100.0	
	Dec.	100.4	102.2	100.8	101.3	100.0	