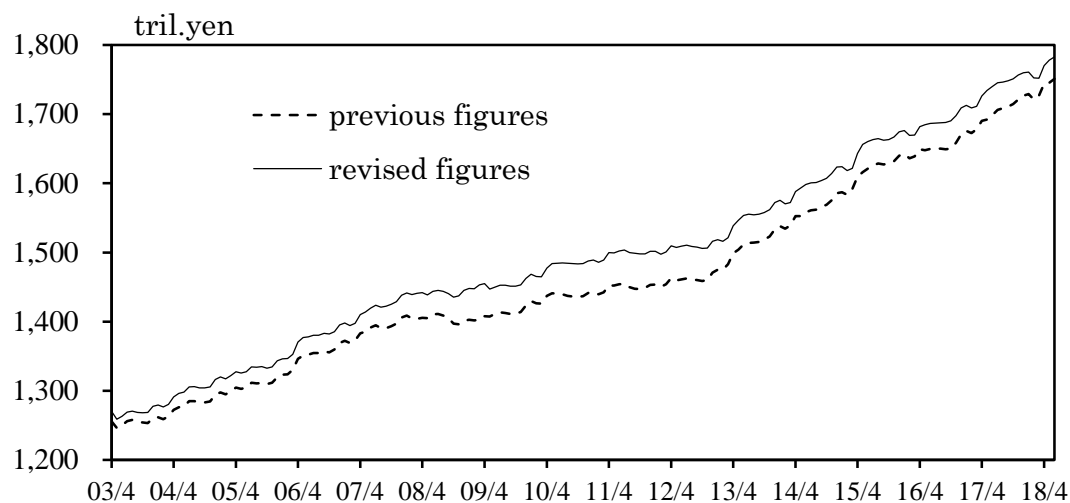
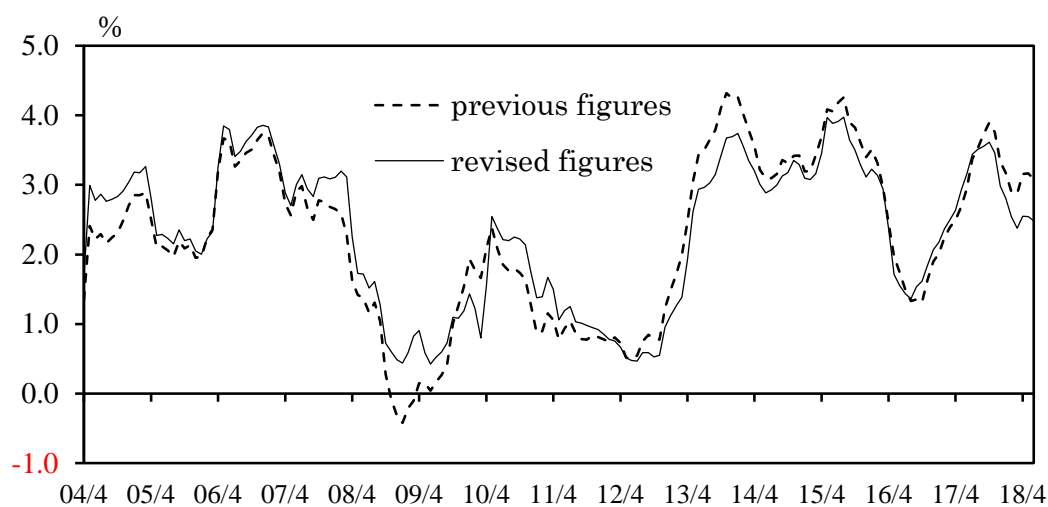


Comparison between figures prior to and after the revision
 — L -- Broadly-defined Liquidity —

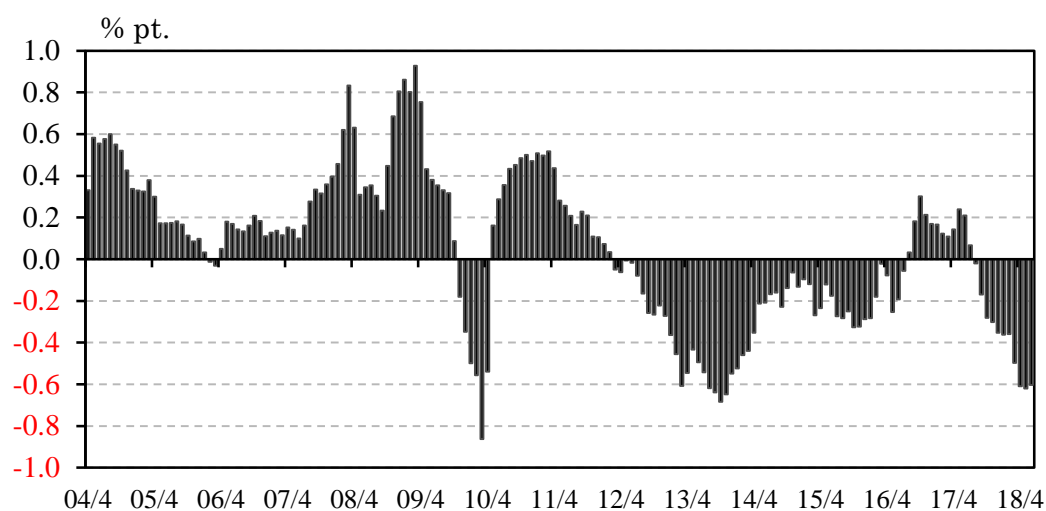
(1) Average amounts outstanding



(2) Year-on-year percent changes

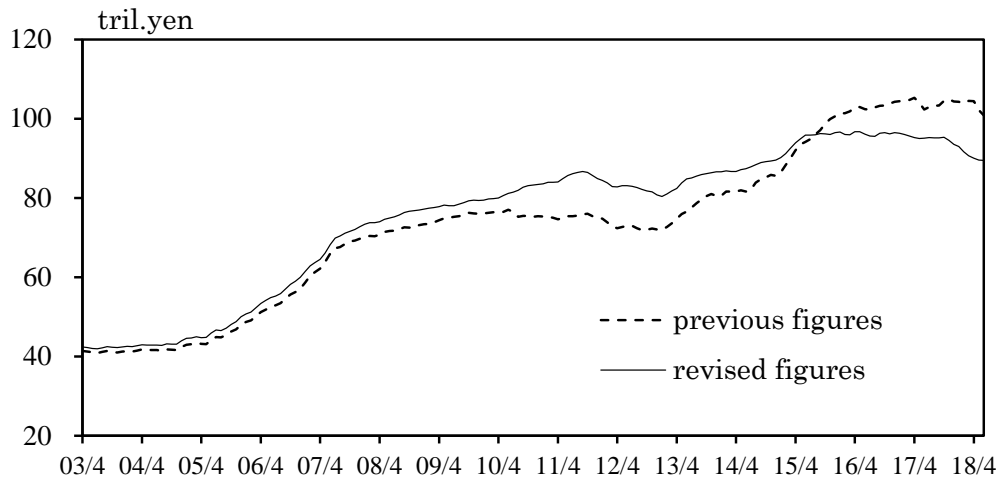


(3) Difference in year-on-year percent changes

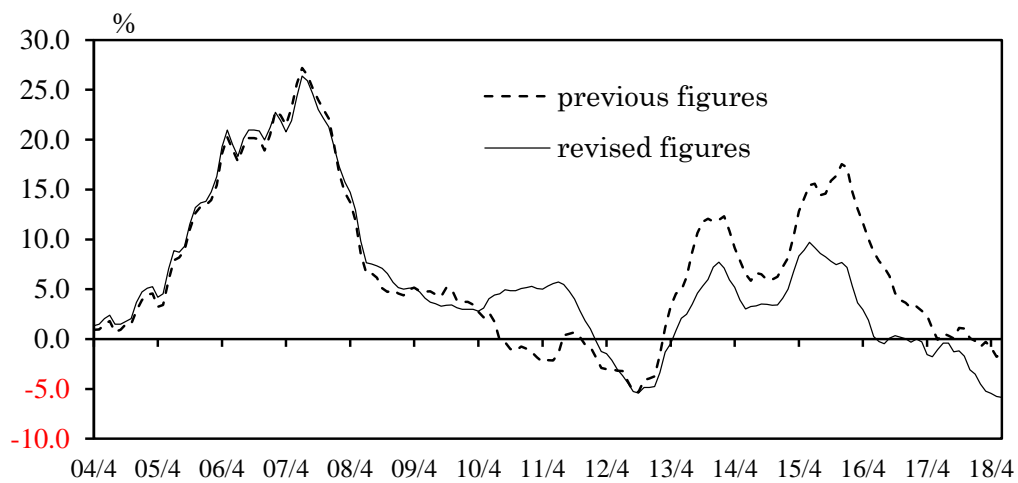


Comparison between figures prior to and after the revision
— Investment trusts —

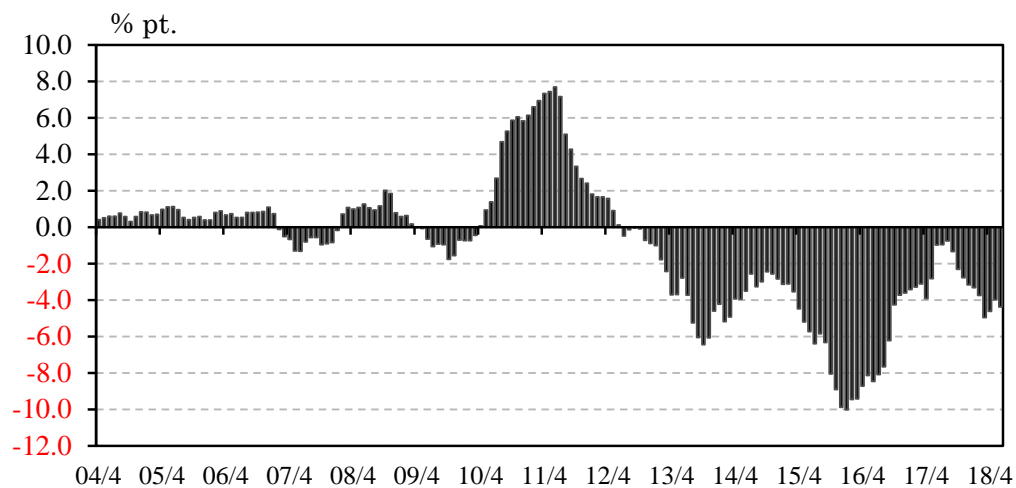
(1) Average amounts outstanding



(2) Year-on-year percent changes



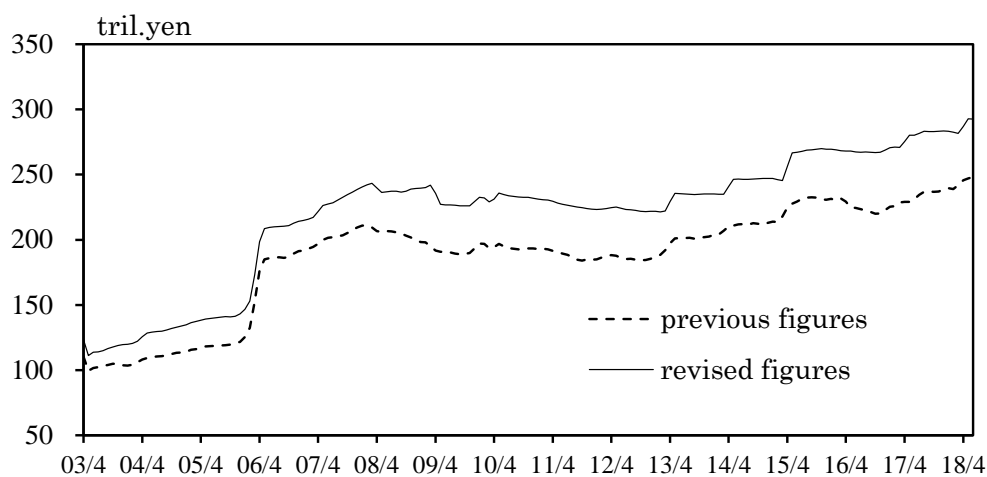
(3) Difference in year-on-year percent changes



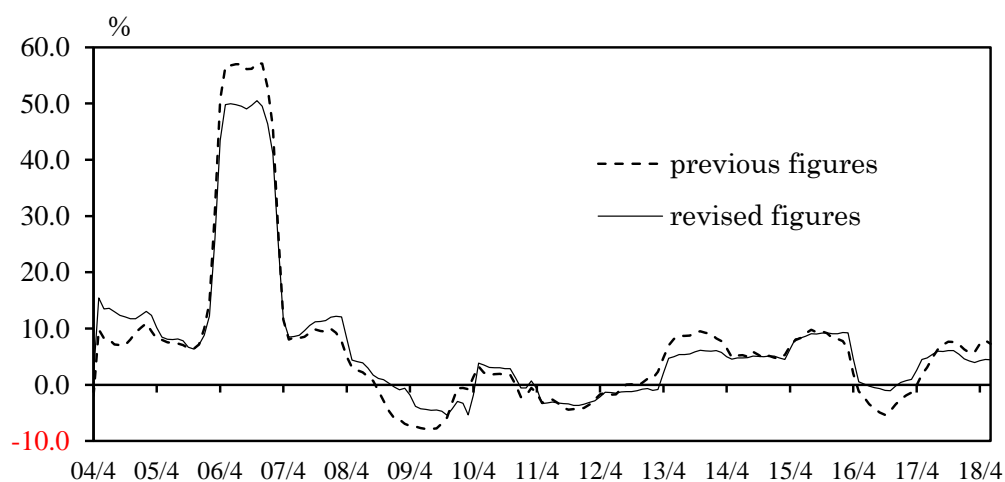
Comparison between figures prior to and after the revision

— Pecuniary trusts —

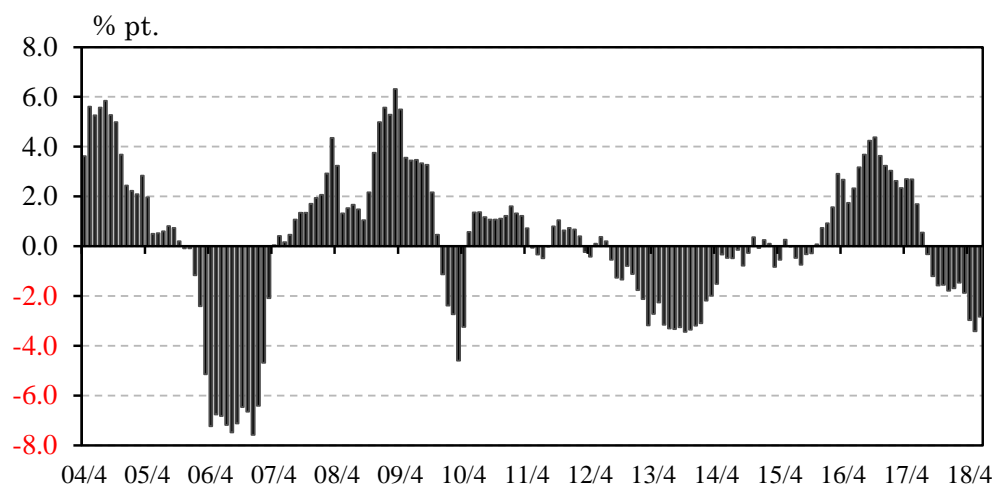
(1) Average amounts outstanding



(2) Year-on-year percent changes

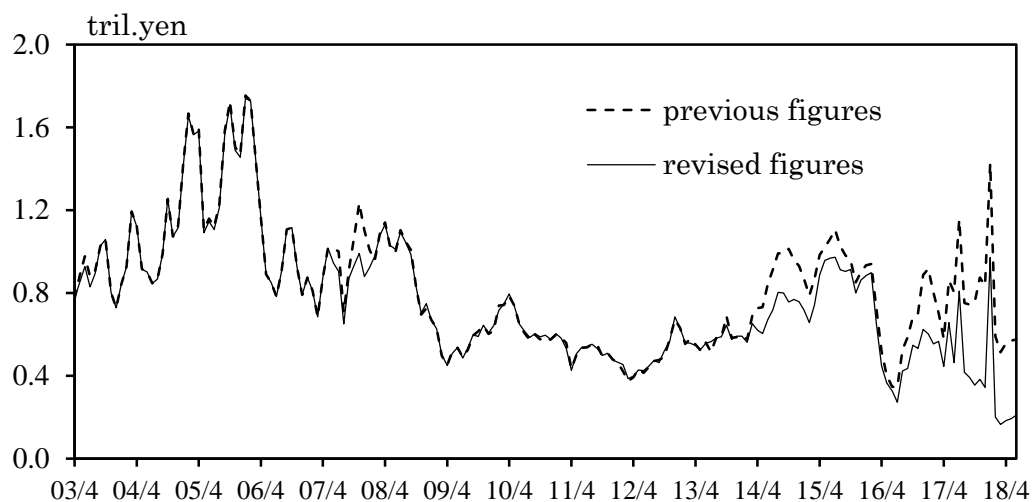


(3) Difference in year-on-year percent changes

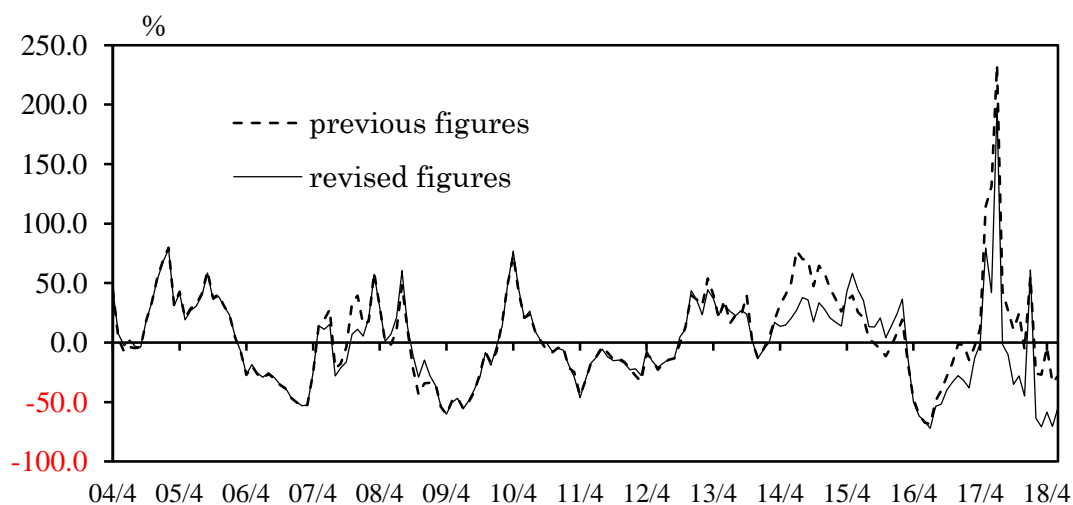


Comparison between figures prior to and after the revision
 — CP issued by financial institutions —

(1) Average amounts outstanding



(2) Year-on-year percent changes



(3) Difference in year-on-year percent changes

