

## Tankan Summary of "Inflation Outlook of Enterprises" (June 2019)

181st Short-Term Economic Survey of Enterprises in Japan

### 1. Output Prices (Rate of Changes Relative to the Current Level)

				Percentage Share of the Number of Respondents Choosing Each Alternative										(Reference)	
				1.	2.	3.	4.	5.	6.	7.	8.	9.	10.	The Average of Enterprises' Inflation Outlook	
				around +20% or higher	around +15%	around +10%	around +5%	around 0%	around -5%	around -10%	around -15%	around -20% or lower	Don't Know	Changes	
All Enterprises	All industries	1 Year ahead	P	0	0	2	17	67	5	1	0	0	9	0.8	0.0
			C	0	0	1	16	67	5	1	0	0	9	0.7	-0.1
		3 Years ahead	P	0	0	3	23	41	8	1	0	0	24	1.2	0.0
			C	0	0	3	22	41	7	2	0	0	24	1.2	0.0
		5 Years ahead	P	0	1	4	21	27	7	2	1	0	37	1.5	0.0
			C	0	1	4	21	27	6	2	1	0	38	1.5	0.0
Large Enterprises	Manu- facturing	1 Year ahead	P	0	0	0	8	68	6	1	0	0	17	0.1	-0.2
			C	0	0	1	8	68	6	1	0	0	17	0.1	0.0
		3 Years ahead	P	0	0	1	11	37	9	2	1	0	39	-0.3	-0.3
			C	0	0	1	11	37	8	2	1	0	40	-0.1	0.2
		5 Years ahead	P	0	0	1	10	25	7	2	0	1	53	-0.5	-0.4
			C	0	0	1	10	26	6	2	1	1	53	-0.3	0.2
	Nonmanu- facturing	1 Year ahead	P	0	0	0	10	71	2	0	0	0	16	0.5	-0.1
			C	0	0	0	11	72	2	0	0	0	16	0.6	0.1
		3 Years ahead	P	0	0	1	14	45	4	1	0	0	36	0.9	-0.2
			C	0	0	2	14	45	3	1	0	0	36	1.0	0.1
		5 Years ahead	P	0	0	2	13	32	4	1	0	0	49	1.0	-0.3
			C	0	0	2	12	32	3	1	0	0	49	1.1	0.1
Small Enterprises	Manu- facturing	1 Year ahead	P	0	0	1	21	65	5	1	0	0	6	0.9	-0.1
			C	0	0	1	19	66	6	1	0	0	7	0.8	-0.1
		3 Years ahead	P	0	0	3	28	36	9	2	0	0	21	1.5	0.0
			C	0	1	3	26	38	9	2	0	0	21	1.3	-0.2
		5 Years ahead	P	0	1	6	25	23	7	2	1	1	34	1.8	0.0
			C	0	1	5	24	24	7	3	1	1	34	1.6	-0.2
	Nonmanu- facturing	1 Year ahead	P	0	0	3	21	64	5	0	0	0	7	1.1	0.2
			C	0	0	2	21	64	5	1	0	0	7	1.1	0.0
		3 Years ahead	P	0	1	4	28	40	8	1	0	0	18	1.7	0.1
			C	0	1	4	27	40	8	2	0	0	19	1.7	0.0
		5 Years ahead	P	0	1	6	26	26	7	2	1	0	32	2.2	0.1
			C	1	1	5	26	26	6	2	1	0	32	2.2	0.0

Notes : 1.P: Previous projection,C: Current projection.

2. Respondents are asked to select the alternative nearest to their institution's expectation of the rate of price change for their mainstay domestic products and services, as adjusted to exclude the effects of changes due to institutional factors such as the consumption tax, for "1 year ahead," "3 years ahead," and "5 years ahead" relative to the current level.
3. "The Average of Enterprises' Inflation Outlook" is the weighted average by response percentages and is calculated excluding "Don't know." Response numbers are rounded for calculation purposes: for example, "around +15%" and "around +20% or higher" are rounded to +15% and +20%, respectively.
4. Figures for percentage share of the number of respondents choosing each alternative in this table are those rounded to the nearest integers. The figures rounded to the first decimal place of percentage are available at "The Comprehensive Data Set" of the Tankan Survey as well as the "BOJ Time-Series Data Search."

## 2. General Prices (Annual Percent Rate Change)

(%, %points)

				Percentage Share of the Number of Respondents Choosing Each Alternative													(Reference)		
				1. around +6% or higher	2. around +5%	3. around +4%	4. around +3%	5. around +2%	6. around +1%	7. around 0%	8. around -1%	9. around -2%	10. around -3% or lower	11-13. Don't have clear views on General Prices			The Average of Enterprises' Inflation Outlook	Changes	
														11. Un- certainty	12. No Influence	13. Other			
All Enterprises	All industries	1 Year ahead	P	0	1	1	5	13	32	32	1	0	0	15	12	2	1	0.9	0.0
			C	0	1	1	5	14	31	32	2	0	0	15	12	2	1	0.9	0.0
		3 Years ahead	P	0	1	1	5	13	28	20	2	0	0	30	27	2	1	1.1	0.0
			C	0	1	1	4	13	27	21	2	1	0	30	27	2	1	1.0	-0.1
		5 Years ahead	P	1	1	1	5	12	20	17	2	1	0	41	38	2	1	1.1	-0.1
			C	0	1	1	4	12	20	17	2	1	0	41	38	2	1	1.1	0.0
Large Enterprises	Manu- facturing	1 Year ahead	P	0	0	0	1	6	27	39	1	0	0	26	22	2	2	0.6	0.0
			C	0	0	0	1	6	28	39	1	0	0	25	22	2	1	0.6	0.0
		3 Years ahead	P	0	0	0	1	6	22	21	1	0	0	48	44	3	2	0.7	0.0
			C	0	0	0	1	6	21	23	1	0	0	48	44	2	2	0.7	0.0
		5 Years ahead	P	0	0	0	1	6	16	18	1	0	0	59	54	3	2	0.8	0.0
			C	0	0	0	1	7	15	18	1	0	0	58	54	2	2	0.7	-0.1
	Nonmanu- facturing	1 Year ahead	P	0	0	0	2	9	30	35	1	0	0	23	19	3	1	0.7	0.0
			C	0	0	0	1	9	28	38	1	0	0	23	19	3	1	0.6	-0.1
		3 Years ahead	P	0	0	0	2	8	24	22	1	0	0	42	38	3	1	0.8	0.0
			C	0	0	0	1	8	24	23	1	1	0	42	38	3	1	0.7	-0.1
		5 Years ahead	P	0	0	0	2	6	18	19	1	0	0	54	49	3	1	0.8	0.0
			C	0	0	0	2	6	18	20	1	0	0	53	49	3	1	0.7	-0.1
Small Enterprises	Manu- facturing	1 Year ahead	P	0	2	1	6	17	33	28	2	0	0	11	9	2	0	1.1	0.1
			C	0	2	1	6	16	32	29	2	0	0	12	10	2	1	1.0	-0.1
		3 Years ahead	P	0	1	1	6	15	31	18	2	0	0	26	23	2	1	1.2	0.0
			C	0	1	1	5	15	29	18	3	1	0	26	23	2	1	1.1	-0.1
		5 Years ahead	P	1	1	2	6	14	22	16	2	1	0	37	34	2	1	1.2	-0.1
			C	0	2	1	5	15	21	16	2	1	0	36	34	2	1	1.2	0.0
	Nonmanu- facturing	1 Year ahead	P	0	2	1	7	16	32	29	1	0	0	11	9	2	1	1.1	0.1
			C	1	1	2	7	16	31	29	2	0	0	11	9	2	1	1.1	0.0
		3 Years ahead	P	0	2	2	7	17	28	19	2	1	0	23	21	2	1	1.2	0.0
			C	0	2	1	6	16	28	20	2	1	0	24	21	2	1	1.2	0.0
5 Years ahead	P	1	2	2	7	15	21	16	2	1	0	35	32	2	1	1.3	0.0		
	C	1	2	2	6	15	20	16	2	1	0	36	32	2	1	1.3	0.0		

Notes : 1.P: Previous projection,C: Current projection.

2. Respondents are asked to select the alternative nearest to their institution's expectation of the annual percentage change in general prices (as measured by the consumer price index), as adjusted to exclude the effects of changes due to institutional factors such as the consumption tax, for "1 year ahead," "3 years ahead," and "5 years ahead."
3. "11. Uncertainty" and "12. No Influence" represent "Uncertainty over the future outlook is high" and "Not really conscious of inflation fluctuations because they should not influence the strategy of the institution."
4. "The Average of Enterprises' Inflation Outlook" is the weighted average by response percentages and is calculated excluding "Don't have clear views on General Prices." Response numbers are rounded for calculation purposes: for example, "around +5%" and "around +6% or higher" are rounded to +5% and +6%, respectively.
5. Figures for percentage share of the number of respondents choosing each alternative in this table are those rounded to the nearest integers. The figures rounded to the first decimal place of percentage are available at "The Comprehensive Data Set" of the Tankan Survey as well as the "BOJ Time-Series Data Search."

(Reference Charts)

Distribution of "Inflation Outlook of Enterprises"  
 [All Enterprises / All industries]

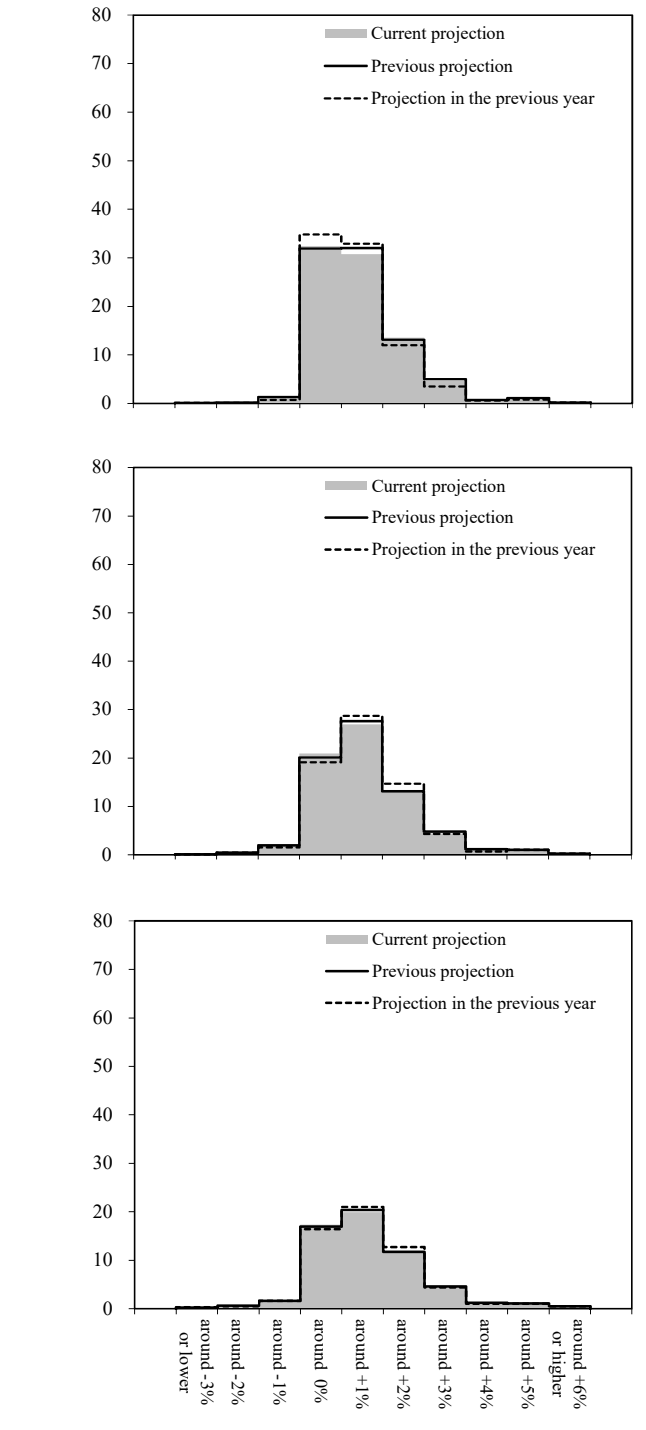
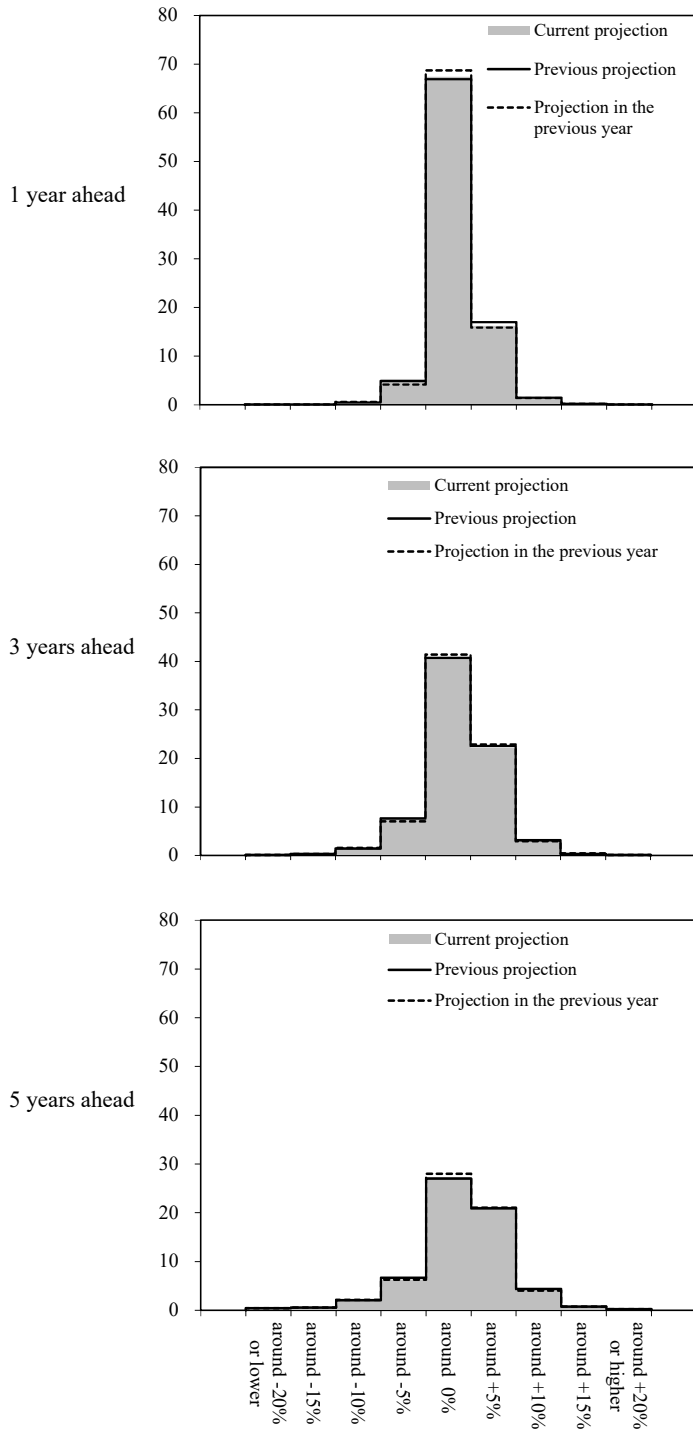
Previous projection: March 2019 survey  
 Projection in the previous year: June 2018 survey

Output Prices

General Prices

(Percentage Share of the Number of Respondents Choosing Each Alternative,%)

(Percentage Share of the Number of Respondents Choosing Each Alternative,%)



(Rate of Changes Relative to the Current Level)

(Annual Percent Rate Change)

Note : "Don't know" for Output Prices and "Don't have clear views" for General Prices are not shown on the charts.